



Reliability Driven™

Service Bulletin No. 402

MODEL	J4500 Series	TYPE	Field Change Program	SECTION/GROUP	9-Fuel	DATE	Oct. 23, 2013
SUBJECT	DD13 DEF NOZZLE SUPPLY HOSE AND METERING UNIT FITTING						
CONDITIONS							

Customer Complaint:

Motor Coach Industries ("MCI") has become aware that the incorrect diesel exhaust fluid (DEF) nozzle supply hose and metering unit fitting was utilized on J4500 series coaches equipped with a DD13 2010 EPA engine.

The incorrect parts could result in leaking DEF, the CHECK ENGINE tell-tale light illuminating on the instrument panel and if not addressed, the coach will initiate the engine shutdown sequence.

Cause:

Incorrect part for application.

Corrective Action:

MCI strongly encourages owners of the J4500 series coaches equipped with a DD13 2010 EPA engine listed in the table below to implement the steps in this procedure as soon as possible.

66008	66032	66074	66078	66082
66085	66087	660132 to 66133	66147	66179 to 66184
66187 to 66188	66195 to 66200	66202 to 66207	66209 to 210	66222 to 66224
66239 to 66240	66279 to 66283	66295 to 66300	66305 to 66307	66309 to 66310
66318 to 66319	66342 to 66343	66345 to 66348	66382	66409
66413 to 66416	66429 to 66439	66441 to 66442	66445 to 66446	66448 to 66453
66460	66503 to 66506	66511 to 66521	66523	66526 to 66529
66531 to 66534	66540	66541		

Parts

Qty.	New P/N	Description
1	26-08-0019	Kit, Service, DD13, 2010 EPA <i>Kit contents are:</i>
1	08-20-2409	Hose, DEF Nozzle Supply, DD13
1	19-10-1403	Elbow, 90 degree, Brass
1	19-10-3010	Adapter

Service Procedure:

Use Safe Shop Practices At All Times.

WARNING

To avoid personal injury, never enter or perform work in the engine compartment prior to positioning the ENGINE RUN and ENGINE START switches on the engine compartment remote control box to the OFF position. Allow enough time for components to cool down prior to working in the engine compartment.

1. Turn the main disconnect switch to the OFF position.
2. Chock both sides of the tires.
3. Open the engine compartment door. Position the ENGINE RUN and ENGINE START switches on the engine remote control box to the OFF position.
4. Locate the stainless steel DEF nozzle supply hose on the selective catalytic reduction exhaust aftertreatment unit (SCR) in the lower, roadside section of the engine compartment (refer to Figure 1).
5. Remove and discard the DEF nozzle supply hose (refer to Figure 1).
6. Orient and install the new DEF nozzle supply hose, p/n 08-20-2409. Torque ends to 11-12 ft.-lbs.

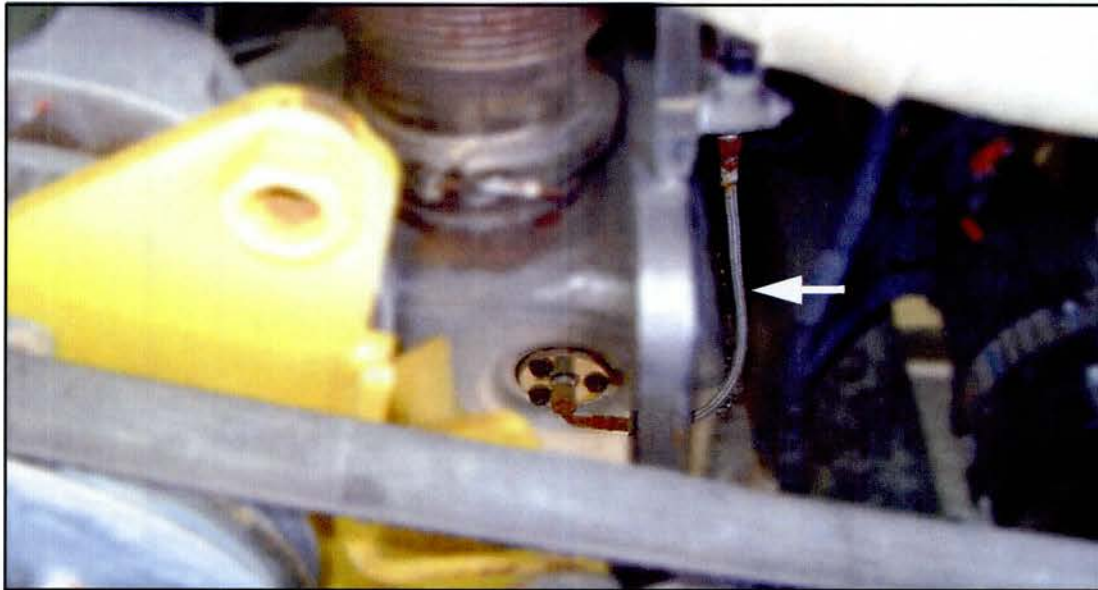


Figure 1.

7. Locate the 90 degree fitting on top of the dosing metering unit, directly above the DEF nozzle supply hose installed in Step 6 (refer to Figure 2)
8. Remove and discard the existing 90 degree fitting on top of the dosing metering unit (refer to Figure 2)



Figure 2.

9. Orient and install the adapter, p/n 19-10-3010 (refer to Figure 3). Torque the adapter to 6-9 ft.-lbs.
10. Orient and install the fitting, p/n 19-10-1403. Cut 0.50 inch off the end of the hose. Connect the hose to the fitting. Tighten to secure.

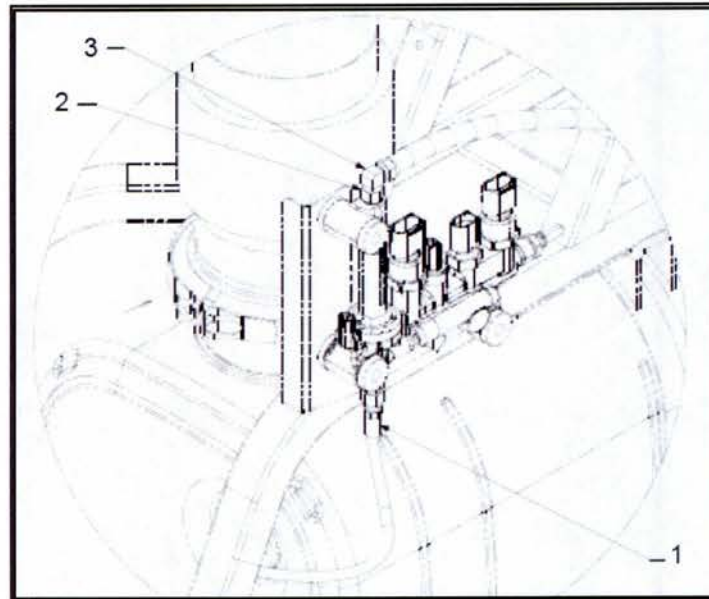


Figure 3.

Item	Description
1	DEF nozzle supply hose
2	Adapter
3	Fitting



11. Position the ENGINE RUN and ENGINE START switches on the engine remote control box to the ON position. Close the engine compartment door.

Procedure Complete.

Mail or fax the completed limited warranty claim form and verification form to MCI's warranty department, or photocopy and mail to:

MCI Fleet Support
Attn: Warranty Department
7001 Universal Coach Drive
Louisville, KY 40258
Fax Number 1-800-360-8886

to receive credit for the hours used to complete this task. Contact the MCI Fleet Support Technical Center at 1-800-241-2947 for any further information.

Field Change Program Conditions:

The parts required for this change will be supplied without charge.

A labor allowance of 0.50 hours will be granted for the procedure of installing the specified part(s) in this bulletin on J4500 series coaches equipped with a DD13 2010 EPA engine.

This labor allowance will be credited to your MCI Fleet Support Parts Account on receipt of the attached "MCI Field Change Program Verification Form" and a "Warranty Claim Form" as detailed in your Owner Warranty manual to MCI's Warranty department. A "MCI Field Change Program Verification Form" needs to be submitted for each VIN affected. Photocopy the attached "MCI Field Change Program Verification Form" as required for the number of affected coaches in your fleet.

This program will end on May 06, 2014.

Motor Coach apologizes for any inconvenience resulting from this campaign, but urges you to implement this change as soon as possible.

Sincerely,

Motor Coach Industries
U.S. and Canadian Service Departments.



Reliability Driven™

MCI FIELD CHANGE PROGRAM (FCP) VERIFICATION

CONTACT INFORMATION	
CUSTOMER NAME: _____ (PLEASE PRINT)	
FCP INFORMATION – ONE FORM PER UNIT	
FCP#: _____	Coach Model _____ Model Year _____
COACH SERIAL #: (At least the last 5 digits)	DATE COMPLETED __ / __ / __
MILEAGE:	
IMPORTANT: TO RECEIVE CREDIT FOR ANY ALLOWABLE LABOR CHARGES, THIS VERIFICATION FORM MUST BE RETURNED TO MCI UPON COMPLETION OF THE FCP.	
SUBMITTED BY: (Please Print) _____ DATE __ / __ / __	
TITLE: (Please Print) _____	
SIGNATURE: _____	
COMMENTS: 	

FAX TO: 800-360-8886

MAILING ADDRESS:

MOTOR COACH INDUSTRIES
ATTN: WARRANTY DEPT.
7001 UNIVERSAL COACH DRIVE
LOUISVILLE, KY 40258

MCI part # 03-15-7738C