

Service Campaign Bulletin

Campaign No. 2012070005, September 2013

Revision	Date	Purpose
A	09/04/13	Inclusion of 18" wheels to work Procedure and Parts information
-	08/03/12	Initial release

TO: ALL MERCEDES-BENZ CENTERS

SUBJECT: **Model 204, Model Year 2012**
Check B-Pillar Tire Information Label, Replace if Necessary

This Service Campaign has been initiated because Daimler AG (DAG), the manufacturer of Mercedes-Benz vehicles, has determined that the spare tire size indicated on the B-Pillar tire pressure information label may be incorrect. Dealers will check, and if necessary replace, the B-Pillar tire pressure information label at the next workshop visit

Prior to performing this Service Campaign:

- Please check VMI to determine if the vehicle is involved in the Campaign and if it has been previously repaired.
- Please review the entire Service Campaign bulletin and follow the repair procedure exactly as described.

Please note that Recall and Service Campaigns **do not expire** and may also be performed on a vehicle with a vehicle status indicator.

Approximately 1,489 vehicles are affected.

Order No. P-SC-2012070005

This bulletin has been created and maintained in accordance with MBUSA-SLP S423QH001, Document and Data Control, and MBUSA-SLP S424HH001, Control of Quality Records.

Procedure

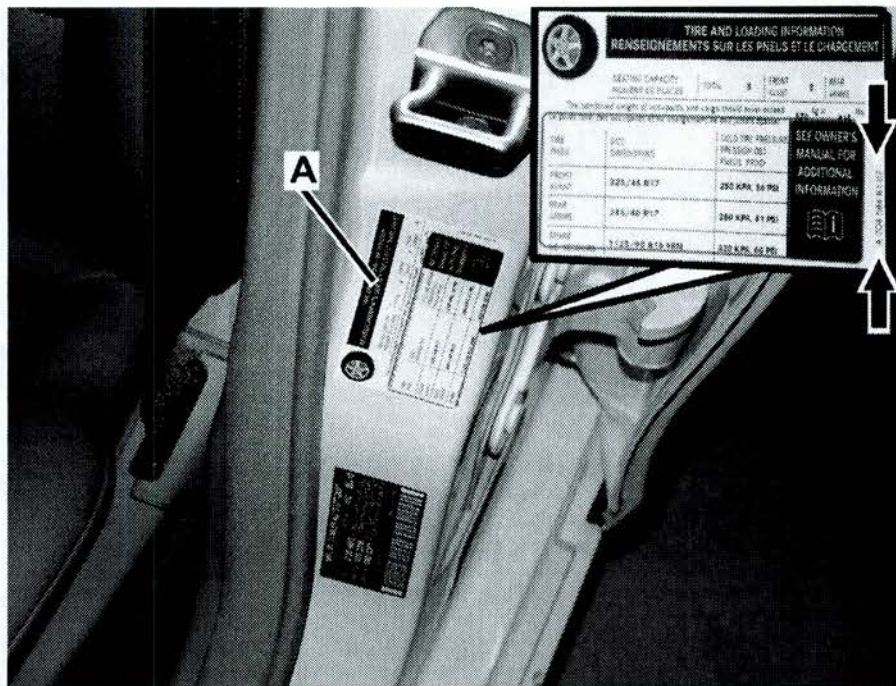


Figure 1

A. Check Tire Size On Installed Tires and Spare Tire (18" installed tire ONLY)

1. For vehicles with **17" mixed tires**:
 - If information label (A, Figure 1) with part number (arrows) A 204 584 81 07 is present (OK): Procedure is complete.
 - If information label (A, Figure 1) with part number (arrows) A 204 584 81 07 not is present (NOT OK): Replace information label (A): Proceed to subject B.
2. For vehicles with **18" mixed tires**: Open trunk loading floor cover and read spare tire dimension:
 - If equipped with **17" spare tire** proceed to step 3.
 - If equipped with **16" spare tire** proceed to step 4.
3. For vehicles with **18" mixed tires and 17" spare tire**:
 - If information label (A, Figure 1) with part number (arrows) A 204 584 84 07 is present (OK): Procedure is complete.
 - If information label (A, Figure 1) with part number (arrows) A 204 584 84 07 is not present (NOT OK): Replace information label (A): Proceed to subject B
4. For vehicle with **18" mixed tires and 16" spare**:
 - If information label (A, Figure 1) with part number (arrows) A 204 584 83 07 is present (OK): Procedure is complete.
 - If information label (A, Figure 1) with part number (arrows) A 204 584 83 07 is not present (NOT OK): Replace information label (A): Proceed to subject B.

B. Replace Tire Pressure Information Label (A, Figure 1)

1. 17" mixed tires: A 204 584 81 07.
2. 18" mixed tires and 17" spare tire: A 204 584 84 07
3. 18" mixed tires and 16" spare tire: A 204 584 83 07

Primary Parts Information

Qty.	Part Name	Part Number	Estimated Replacement Rate
1	B-Pillar tire pressure information label (with 17" tires) or	A 204 584 8107	90%
	B-Pillar tire pressure information label (with 18" tires and 17" spare tire) or	A 204 584 8407	
	B-Pillar tire pressure information label (with 18" tires and 16" spare tire)	A 204 584 8307	

Note:

- Please be aware that only the part number(s) referenced in the Campaign Bulletin is/are approved for use to repair the vehicle. Repairs performed using any other part(s) will not have been performed in accordance with the campaign. Accordingly, warranty claims submitted with reference to an improper part number(s) will be denied.
- The following allowable labor operation should be used when submitting a warranty claim for this repair:

Warranty Information**Repair 1**

Operation: Check B-Pillar tire pressure information label (02-7722)

Damage Code	Operation Number	Model Indicator(s)
58 914 43 8	02-7722	CC

Repair 2

Operation: Check B-Pillar tire pressure information label (02-7722)
Replace B-Pillar tire pressure information label (02-7723)

Damage Code	Operation Number	Model Indicator(s)
58 914 43 7	02-7722	CC
	02-7723	

Note

Operation code times are subject to change. Please refer to StarTime for current labor times.