 HYUNDAI NEW THINKING. NEW POSSIBILITIES. Technical Service Bulletin	GROUP	NUMBER
	CAMPAIGN	13-01-028
	DATE	MODEL
	JULY 2013	GENESIS (BH)
SUBJECT TCM UPDATE (SERVICE CAMPAIGN TP6)		

GDS  **ECU Update**
Global Diagnostic System

* IMPORTANT	*** Retail Vehicles ***
<p>Dealers must perform this Campaign whenever an affected vehicle is in the shop for any maintenance or repair.</p> <p>When a vehicle arrives at the Service Department, access Hyundai Motor America's "Warranty Vehicle Information" screen via WEBDCS to identify open Campaigns.</p>	
<p>Description: This bulletin provides a procedure to update the TCM software for 2012 Genesis (BH) vehicles to revise the 6-4 downshift characteristics when braking from approximately 50 mph.</p>	

Applicable Vehicles: 2012 MY Genesis (BH) 4.6L with 8-speed transmission
Applicable Production Date Range: From October 4, 2011 through October 31, 2011

GDS INFORMATION:

EVENT#	DESCRIPTION
Event #256	256.BH 4.6 MPI TCM UPDATE - TCM

WARRANTY INFORMATION:

MODEL	OP CODE	OP NAME	OP TIME
GENESIS (BH)	30C021R0	TCM UPGRADE	0.3

ROM ID TABLE: Verify the TCM ROM ID before updating vehicle software.

MODEL	TCM PART NUMBER	TCM ROM ID	
		PREVIOUS	NEW
GENESIS(BH)	95440-4E220	TBH0C46NA0 TBH0C46NA1	TBH0C46NA2

NOTE: Submit claim on campaign Claim Entry Screen

GENERAL PRECAUTIONS

- Connect the USB cable between the GDS and the VCI.
- Connect the 16-pin DLC connector from the VCI into the DLC located under the driver's side dash.



*** NOTE**

Make sure the battery icon at the bottom right of the GDS laptop shows at least 50%; if not, charge the GDS or attach a battery charger.

- Turn off all lights (Do not leave the headlight switch in auto mode) and all accessories (including heater/air conditioner/fan, audio, heated seats, rear defroster, etc) to ensure the battery will not be discharged during the update.
- Perform the update with the ignition key in the ON position. (Turn the ignition key to the ON position or press the Start-Stop Button two times without depressing the brake pedal).
- Do not disconnect any cables connected to the vehicle or the GDS during the update.
- Do not start the engine or turn the ignition switch OFF during the update.

*** NOTE**

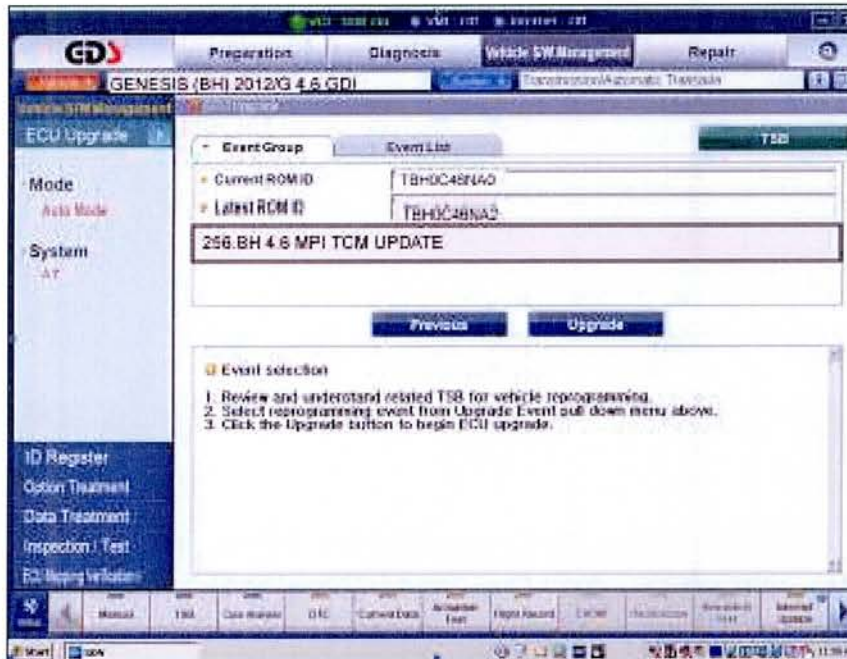
Confirm your GDS has the most recent version. If not, connect the GDS to an Internet port, open the GDS home page and select "Update". Refer to instructions on hmaservice.com if necessary.

*** NOTE**

If you encounter GDS related problems, call the GIT Helpline at 888-437-0308.

GDS AUTO MODE TCM UPDATE PROCEDURE

1. From the GDS home page, select **ECU Upgrade**. If necessary, select the VIN.
2. Select **AT** as the system and then select **OK**.
3. Select **Auto Mode** and then select **Next**.
4. From the **System** tab, select **AT** and then select **OK**. The GDS will read the ROM ID. Confirm the ROM is applicable as shown on Page 1, "ROM ID Information".
5. Update event **#256.BH 4.6 MPI TCM UPDATE** will display. Select **Upgrade**.



6. If the screen indicates "**Voltage is OK**", select **OK**. If not, select **CANCEL** and charge the vehicle battery by running the engine for 10 minutes.
7. Updating will occur until 100% is reached on the bar graph. At the prompt, turn the ignition key OFF for 10 seconds, then turn it ON and select **OK**.
8. The GDS will confirm that TCM reprogramming is successfully finished. Select **OK**.
9. If the TCM update was not successful, go to **GDS MANUAL MODE TCM UPDATE PROCEDURE**.
10. Check for any Diagnostic Trouble Codes and erase any DTC.
11. From the home screen, select Vehicle, **AT** menu and **Option Treatment**. Select **Resetting Auto T/A Values** and follow the prompts on the screen.
12. Drive the vehicle to confirm proper operation.

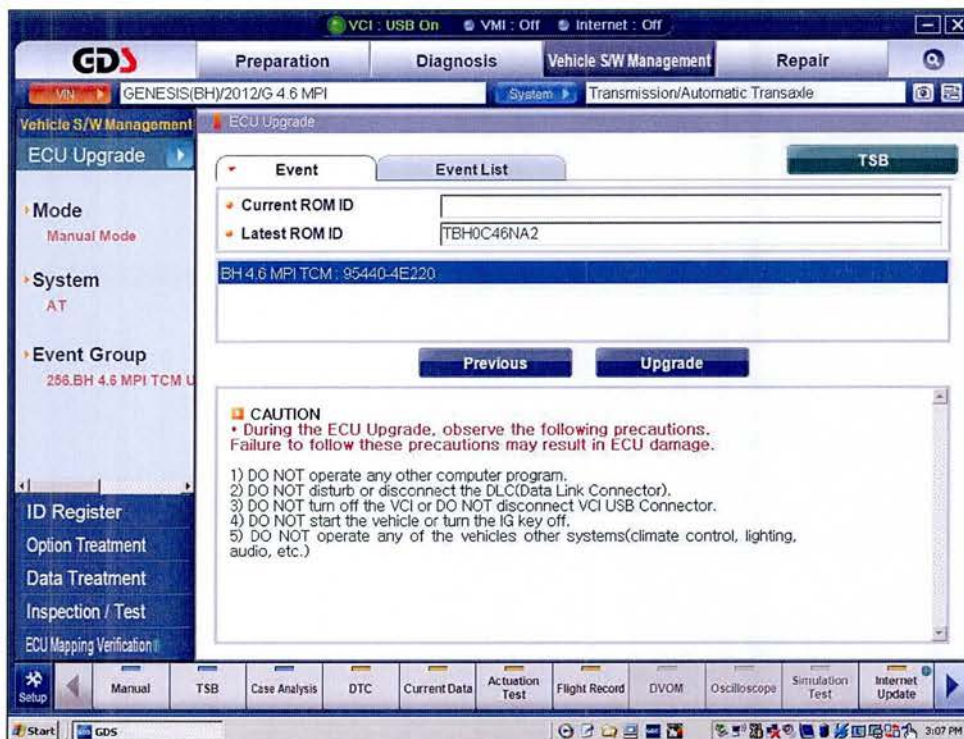
GDS MANUAL MODE TCM UPDATE PROCEDURE

★ NOTE

In the event of AUTO MODE update failure (after it initiated the progress bar):

- You must attempt MANUAL MODE. Use the TCM P/N from the vehicle's TCM label if the correct TCM P/N is not clear from the ROM ID table.
- Replacing a TCM without carefully documenting that a MANUAL MODE update attempt was made will result in a charge back of your claim.

1. From the GDS home page, select **ECU Upgrade**. If necessary, select the VIN.
2. Select **AT** as the system and then select **OK**.
3. Select **Manual Mode** and then select **NEXT**.
4. From the **System** tab, select **AT** and then select **NEXT**.
5. Update event #256.BH 4.6 MPI TCM UPDATE will display. Select **Next**.
6. Select **BH 4.6 MPI TCM 95440-4E220**. Select **Upgrade**.



7. Enter the Password and click **OK**. The part number can be found on the PCM label.

MENU	PASSWORD
BH 4.6 MPI TCM : 95440-4E220	4220

8. If the **“Voltage is OK”**, select **OK**. If not, select **CANCEL** and charge the vehicle battery.
9. The remaining steps are the same as Step 7~12 of the Auto Procedure.