 HYUNDAI NEW THINKING. NEW POSSIBILITIES. Technical Service Bulletin	GROUP	NUMBER
	CAMPAIGN	13-01-029
	DATE	MODEL
	JULY 2013	ACCENT (RB)
ECM & TCM UPDATE (SERVICE CAMPAIGN TP7)		



ECU Update

★ IMPORTANT

***** Retail Vehicles *****

Dealers must perform this Campaign whenever an affected vehicle is in the shop for any maintenance or repair.

When a vehicle arrives at the Service Department, access Hyundai Motor America's "Warranty Vehicle Information" screen via WEBDCS to identify open Campaigns.

Description: This bulletin provides a procedure to update the ECM and TCM software logic for 2012 Accent (RB) 1.6L vehicles to revise:

- Auto Cruise Control (ACC) logic
- P0456 : Evaporative Emission System – Leak detected(very small leak)
- P0461 : Fuel Level Sensor 'A' Circuit Range/Performance
- P2192 : System too Rich at Higher Load(Bank1)

NOTE: There are no vehicle performance issues associated with the listed conditions.

Applicable Vehicles: 2012 MY Accent (RB) automatic transaxle with ACC (Auto Cruise Control)
Applicable Production Date Range: From April 11, 2011 through May 31, 2011

GDS Information:

Event #294 (or latest Event #)	294.RB 1.6 AT P0456/0461/2192 DTC LOGIC IMPROVEMENT - ECM
Event #267 (or latest Event #)	267.RB ACC LOGIC IMPROVEMENT - TCM

Warranty Information:

MODEL	OP CODE	OPERATION	OP TIME
Accent (RB)	30C028R0	ECM & TCM UPGRADE	0.5

NOTE: Submit claim on Campaign Claim Entry Screen

ECM ROM ID TABLE: Verify the ECM ROM ID before updating vehicle software.

MODEL	TCM P/N	TCM ROM ID	
		PREVIOUS	NEW
ACCENT (RB)	39110-2BAD5 39110-2BAD7	GGRB-ANU6PS00C00 GGRB-ANU6PS01C00 GGRB-ANU6PS02C00 GGRB-ANU6PS03C00 GGRB-ANU6PS04C00 GGRB-ANU6PS00C0A GGRB-ANU6PS01CA0 GGRB-ANU6PS02CA0 GGRB-DNU6PS02C00	GGRB-DNU6PS04C00

TCM ROM ID TABLE: Verify the TCM ROM ID before updating vehicle software.

MODEL	TCM (PCM) PART NUMBER	TCM ROM ID	
		PREVIOUS	NEW
Accent (RB) 1.6L	39110-2BAD5 39110-2BAD7 39110-2BAE5 39110-2BAE7	TRB0Z16NA0 TRB0Z16NA1 TRB0Z16NA2 TRB0Z16N10	TRB0Z16NA3

GENERAL PRECAUTIONS

- Connect the USB cable between the GDS and the VCI.
- Connect the 16-pin DLC connector from the VCI into the DLC located under the driver's side dash.



*** NOTE**

Make sure the battery icon at the bottom right of the GDS laptop shows at least 50%; if not, charge the GDS or attach a battery charger.

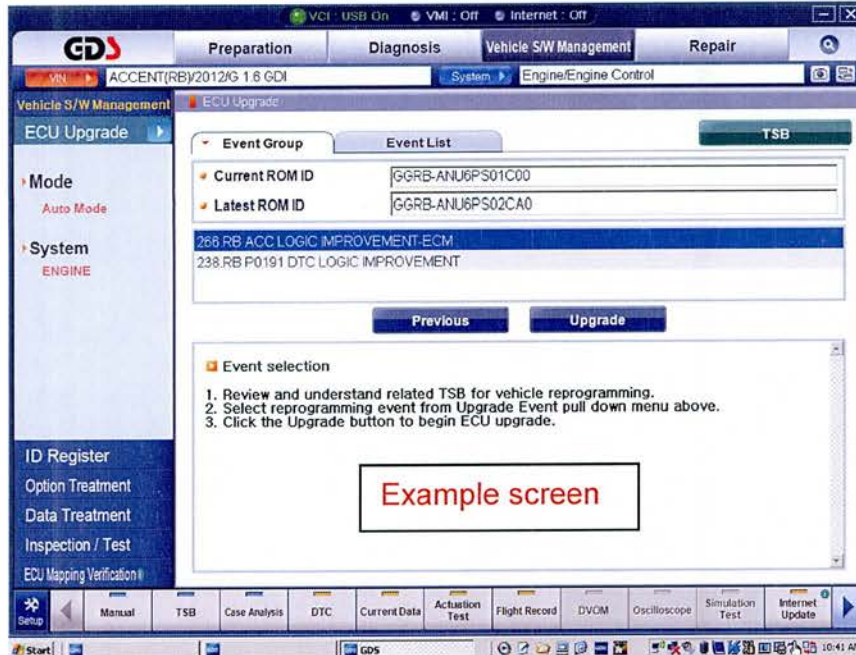
- Turn off all lights (Do not leave the headlight switch in auto mode) and all accessories (including heater/air conditioner/fan, audio, heated seats, rear defroster, etc) to ensure the battery will not be discharged during the update.
- Perform the update with the ignition key in the ON position. (Turn the ignition key to the ON position or press the Start-Stop Button two times without depressing the brake pedal).
- Do not disconnect any cables connected to the vehicle or the GDS during the update.
- Do not start the engine or turn the ignition switch OFF during the update.

*** NOTE**

- Confirm your GDS has the most recent version. If not, connect the GDS to an Internet port, open the GDS home page and select "Update".
- If you encounter GDS related problems, call the GIT Helpline at 888-437-0308.

GDS AUTO MODE ECM UPDATE PROCEDURE

1. From the GDS home page, select **ECU Upgrade**. If necessary, select the VIN.
2. Select **Engine** as the system and then select **OK**.
3. Select **Auto Mode** and then select **Next**.
4. From the **System** tab, select **Engine** and then select **OK**. The GDS will read the ROM ID. Confirm the ROM is applicable as shown on Page 1, "ROM ID Information".
5. Select update event #**294.RB 1.6 AT P0456/0461/2192 DTC LOGIC IMPROVEMENT – ECM** or any later (higher) event number that shows in the GDS list. Select **Upgrade**.



6. If the screen indicates "**Voltage is OK**", select **OK**. If not, select **CANCEL** and charge the vehicle battery by running the engine for 10 minutes.
7. Updating will occur until 100% is reached on the bar graph. At the prompt, turn the ignition key OFF for 10 seconds, then turn it ON and select **OK**.
8. The GDS will confirm that TCM reprogramming is successfully finished. Select **OK**.
9. If the TCM update was not successful, go to **GDS MANUAL MODE ECM UPDATE PROCEDURE**.
10. Check for Diagnostic Trouble Codes and erase any DTC.
11. Start the engine to confirm proper operation of the vehicle.

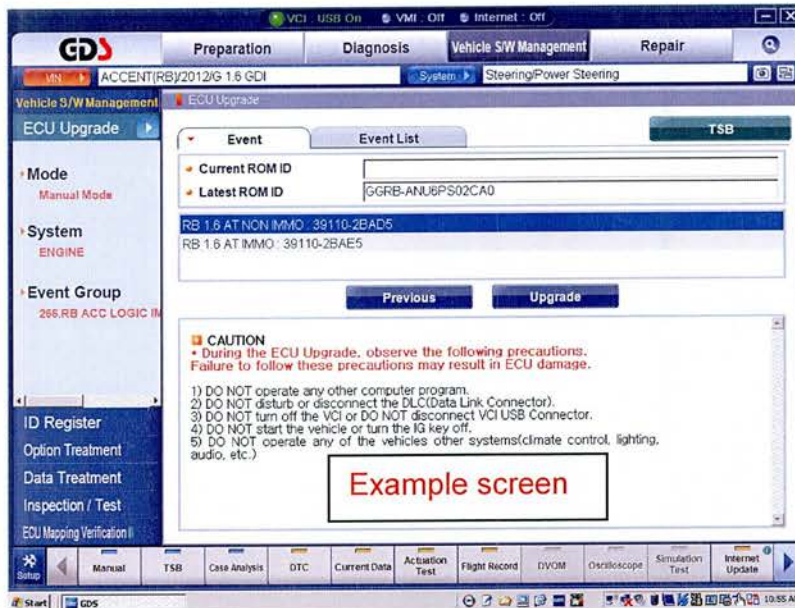
GDS MANUAL MODE ECM UPDATE PROCEDURE

★ NOTE

In the event of AUTO MODE update failure (after it initiated the progress bar):

- You must attempt MANUAL MODE. Use the TCM P/N from the vehicle's TCM label if the correct TCM P/N is not clear from the ROM ID table.
- Replacing a TCM without carefully documenting that a MANUAL MODE update attempt was made will result in a charge back of your claim.

1. From the GDS home page, select **ECU Upgrade**. If necessary, select the VIN.
2. Select **Engine** as the system and then select **OK**.
3. Select **Manual Mode** and then select **NEXT**.
4. From the **System** tab, select **Engine** and then select **NEXT**.
5. Select update event **#294.RB 1.6 AT NON IMMO: 39110-2BAD5/D7S1** or any later (higher) event number that shows in the GDS list. Select **Next**.



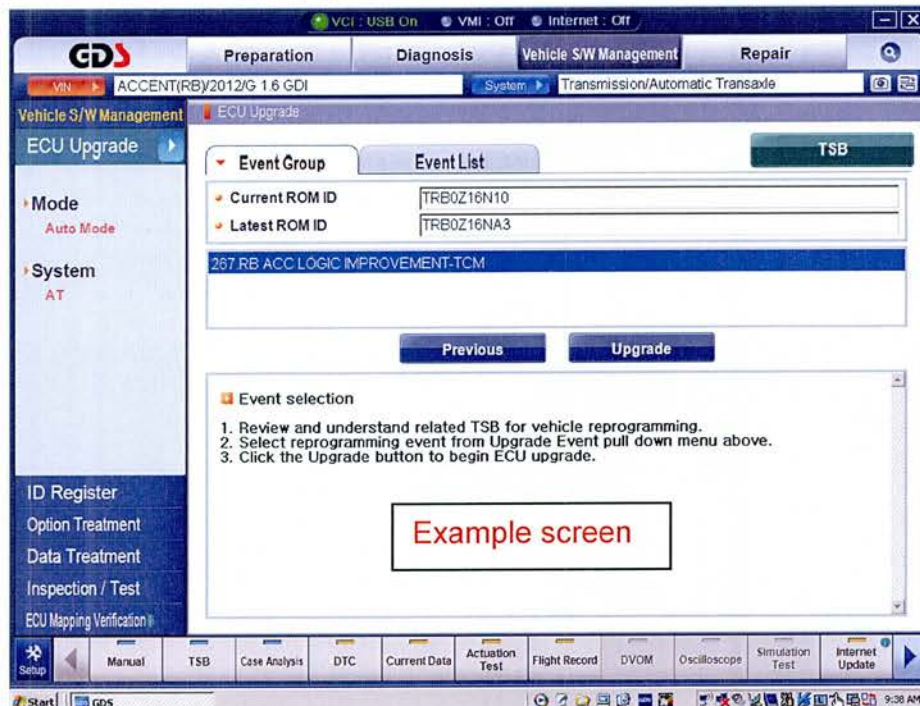
6. Enter the Password and click **OK**. The part number can be found on the PCM label.

MENU	PASSWORD
RB 1.6 AT NON IMMO : 39110-2BAD5/D7/S1	1021

7. If the “Voltage is OK”, select **OK**. If not, select **CANCEL** and charge the vehicle battery.
8. The remaining steps are the same as Step 7~11 of the Auto Procedure.

GDS AUTO MODE TCM UPDATE PROCEDURE

1. From the GDS home page, select **ECU Upgrade**. If necessary, select the VIN.
2. Select **AT** as the system and then select **OK**.
3. Select **Auto Mode** and then select **Next**.
4. From the **System** tab, select **AT** and then select **OK**. The GDS will read the ROM ID. Confirm the ROM is applicable as shown on Page 1, "ROM ID Information".
5. Select update event **267.RB ACC LOGIC IMPROVEMENT-TCM** or any later (higher) event number that shows in the GDS list. Select **Upgrade**.



6. If the screen indicates "**Voltage is OK**", select **OK**. If not, select **CANCEL** and charge the vehicle battery by running the engine for 10 minutes.
7. Updating will occur until 100% is reached on the bar graph. At the prompt, turn the ignition key OFF for 10 seconds, then turn it ON and select **OK**.
8. The GDS will confirm that TCM reprogramming is successfully finished. Select **OK**.
9. If the TCM update was not successful, go to **GDS MANUAL MODE TCM UPDATE PROCEDURE**.
10. Check for Diagnostic Trouble Codes and erase any DTC.
11. From the home screen, select Vehicle, **AT** menu and **Option Treatment**. Select **Resetting Auto T/A Values** and follow the prompts on the screen.
12. Drive the vehicle to confirm proper operation.

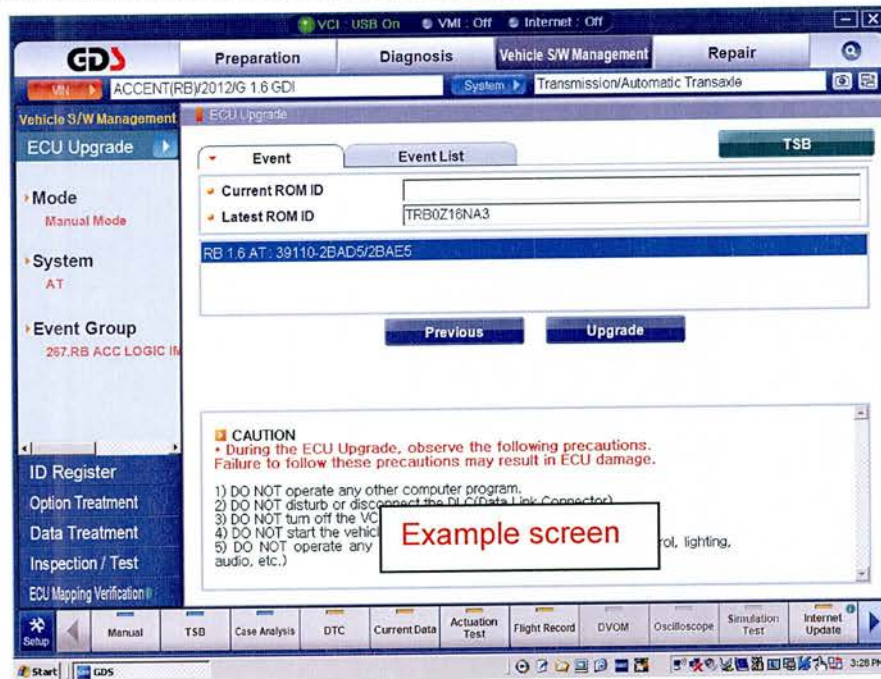
GDS MANUAL MODE TCM UPDATE PROCEDURE

★ NOTE

In the event of AUTO MODE update failure (after it initiated the progress bar):

- You must attempt MANUAL MODE. Use the TCM P/N from the vehicle's TCM label if the correct TCM P/N is not clear from the ROM ID table.
- Replacing a TCM without carefully documenting that a MANUAL MODE update attempt was made will result in a charge back of your claim.

1. From the GDS home page, select **ECU Upgrade**. If necessary, select the VIN.
2. Select **AT** as the system and then select **OK**.
3. Select **Manual Mode** and then select **NEXT**.
4. From the **System** tab, select **AT** and then select **NEXT**.
5. Select update event **Upgrade Event #267 RB 1.6 AT 39110-2BAD5/2BAE5** or any later (higher) event number that shows in the GDS list. Select **Next**.



6. Enter the Password and click **OK**. The part number can be found on the PCM label.

MENU	PASSWORD
RB 1.6 AT : 39110-2BAD5/2BAE5	1025

7. If the "Voltage is OK", select **OK**. If not, select **CANCEL** and charge the vehicle battery.
8. The remaining steps are the same as Step 7~12 of the Auto Procedure.