



Updating Programmable HFL (HFT) Control Units – Civic

BACKGROUND

The procedures in this service bulletin are used and referenced in other service bulletins.

This bulletin describes the procedure to update the software in programmable HandsFreeLink (HFL) control units for Civic models.

This bulletin consists of two procedures:

- Vehicles without navigation, page 2.
- Vehicles with navigation, page 7.

This service bulletin also describes these subjects:

- Required tools and equipment
- Updating tips and precautions
- Who to contact for questions or problems when using Honda-supplied updating equipment, including software and tools.

NOTE: Whenever you install a new HFL control unit, check that it has the latest software, and update it if needed.

WARRANTY CLAIM INFORMATION

Refer to the specific service bulletin for the symptom you are repairing.

QUESTIONS ABOUT THE UPDATING EQUIPMENT OR THE INTERACTIVE NETWORK

For cellular phone compatibility listings or required settings, call JCI Technical Support at **888-528-7876**.

For HFL PC software installation or Bluetooth pairing issues, call the iN Support Center at **800-245-4343**.

For HFL module reprogramming (vehicle side) and general troubleshooting, call Tech Line at **800-824-6632**.

REQUIRED TOOLS AND EQUIPMENT

- A laptop PC, loaded with the newest version of the HDS software, and equipped with the minimum requirements:
 - Any version of Windows listed below:
 - Windows XP (32-bit), at least 512 MB RAM, and Service Pack 2
 - Windows Vista/7 (32-bit), at least 1 GB RAM
 - Windows 7, (64-bit), at least 2 GB RAM
 - 1 gigahertz (GHz) or faster 32-bit (x86) or 64-bit (x64) processor
 - At least 16 GB of available hard disk space (32-bit) or at least 20 GB hard disk space (64-bit; Windows 7 only)
 - *Windows Vista Only:* Support for DirectX 9 graphics with WDDM and at least 128 MB of graphics memory (32 MB for Home Basic)
 - *Windows 7 Only:* DirectX 9 Graphics device with WDDM 1.0 or higher driver
 - The Microsoft.NET Framework software application: Version 2.0 or later
- NOTE: This is available to download for free; go to *microsoft.com* or ask your system administrator for assistance.
- The latest version of the HDS software installed on this computer. See the specific service bulletin you're applying for additional information.
- A recognized Bluetooth radio device installed on this computer. If one is required, order P/N: CDWF8T016 from the Tool and Equipment Program (on iN, click on: **Service > Quick Links > Tool and Equipment Program**), or choose a commercially available device from the list below.

Brand	Model #	OS*	32-bit	64-bit
Targus ¹	ACB10US1	ALL	X	X
Cirago ²	BTA-3210	ALL	X	X
IO Gear ¹	GBU421	ALL	X	X
Rocketfish ¹	RF-MRBTAD	ALL	X	X

* Windows XP, Windows Vista, or Windows 7 Operating System

¹ Use Widcomm (Broadcom) Bluetooth drivers.

² Use Toshiba Bluetooth drivers.



HFL CONTROL UNIT UPDATE PROCEDURE

Vehicles without Navigation

NOTE: Failure to follow the procedures and precautions in this bulletin may damage the HFL control unit.

1. Connect a jumper battery to the vehicle and leave it connected during the entire procedure to maintain a steady voltage.

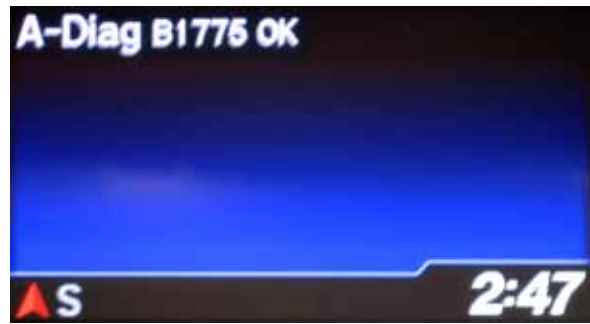
2. Turn the ignition switch to ON (II).

NOTE: The i-MID must be on the audio screen.

3. Press and hold the audio preset No. 1 button, then press and hold the audio preset No. 6 button. Finally, press and hold the audio power button. Release the buttons once the audio unit enters the self-diagnosis mode and the "A-Diag DIAG" screen appears.

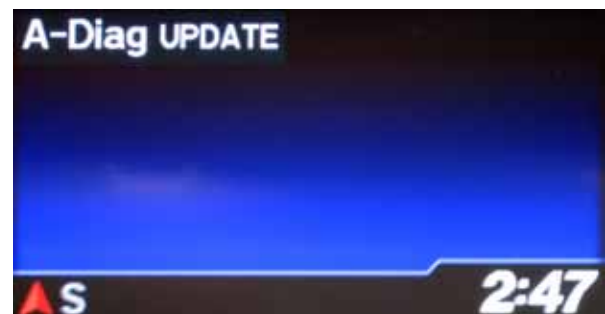
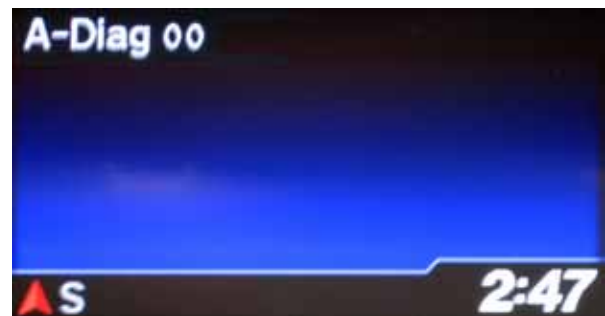
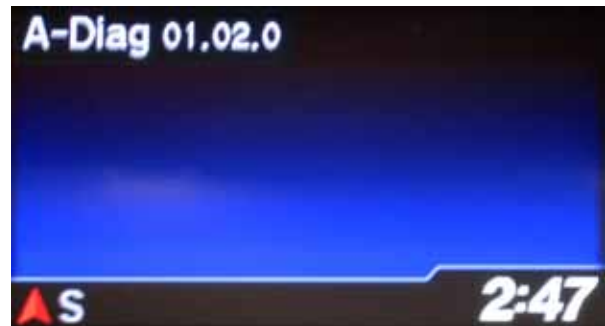


4. Press and hold the PHONE button for at least five seconds to enter the HFL diagnostic mode. One of the following screens appears: "A-Diag XXXXX OK."



5. Press the audio preset No. 2 button several times to cycle through the display screens until you see the "A-Diag XX.XX.XXX" screen. Verify that the correct software version is installed.

NOTE: The first "A-Diag" screen has the first five digits of the software version. Press the No. 2 button to see the last two digits.



- On the HDS laptop, double-click the HFL (HFT) Control Unit Update icon to launch the Honda HFL (HFT) Control Unit Update tool window (HDS update tool).



NOTE: The HDS laptop must be connected to an AC outlet during the reflash process and must be within a distance of 21 feet to the vehicle. Do not allow the HDS laptop to go into sleep or hibernate mode during the reflash process. If this occurs, the Bluetooth connectivity between the HDS laptop and the vehicle's HFL system will be dropped, and the reflash process will be interrupted. It will then be necessary to restart the reflash procedure. See your laptop manufacturer's instructions or your system administrator for assistance to change these settings.

- Press the SELECT knob on the audio unit to change the HFL update screen. A four-digit PIN code appears. Write it down on a piece of paper or on the RO, and leave it in the vehicle.

NOTE: This PIN is required to complete the HFL update and to re-establish communication if the update process is interrupted. If this PIN is lost, forgotten, or otherwise misplaced, and the HFL control unit is stuck in reflash mode (due to an incomplete reflash), the HFL control unit will have to be replaced.



- In the HFL update tool, click on the Bluetooth icon in the upper left-hand corner of the screen to prepare the HDS Laptop for the pairing process with the vehicle's HFL control unit.



NOTE: If an active Bluetooth adapter is not found on the HFL update tool, this error message will appear. Review the REQUIRED TOOLS AND EQUIPMENT section of this publication for a recognized Bluetooth device. Contact your IT support for additional help.



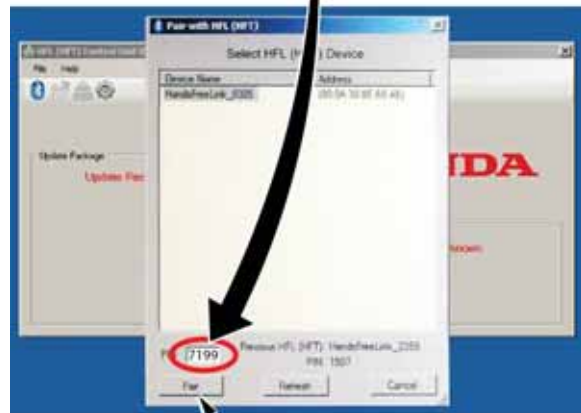
9. In the HFL update tool, the “Pair with HFL” window pops up. Wait a few seconds for the display to show “All Detected Bluetooth Devices.” If no devices are found after 30 seconds, click on **Refresh**.

NOTE: If the HFL control unit is unable to establish a Bluetooth connection with the HFL App after 5 minutes, it times out. If this occurs, reboot the HDS laptop, and turn the ignition switch to LOCK (0). Go back to step 2, and repeat the update procedure.



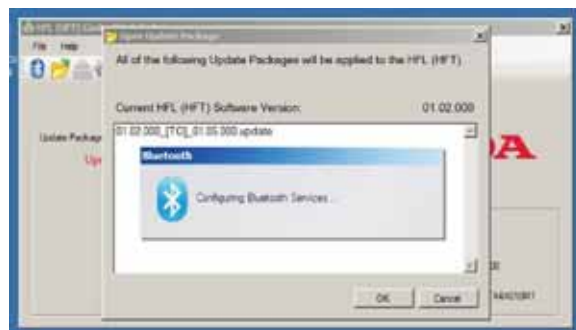
10. In the HFL update tool, enter the four-digit PIN from the vehicle's display screen into the lower left-hand corner of the pop-up window. Click **Pair** to begin the pairing process.

NOTE: Leave the PIN you wrote down in step 7 in the vehicle. This PIN is required to complete the HFL update and to re-establish communication if the update process is interrupted. If this PIN is lost, forgotten, or otherwise misplaced, and the HFL control unit is stuck in reflash mode (due to an incomplete reflash), the HFL control unit will have to be replaced.

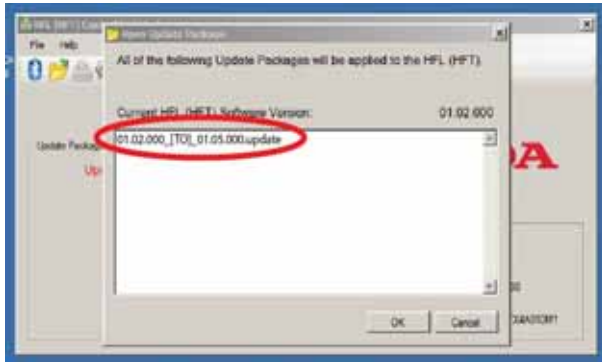


PAIR BUTTON

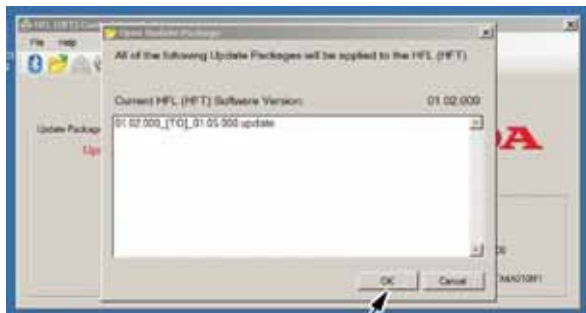
11. Wait for the HFL update tool to complete the Bluetooth pairing process.



12. In the HFL update tool, the “Open Update Package” window pops up when the Bluetooth pairing process is complete. The HFL App automatically determines which version of the HFL software is present. The compatible updates will be displayed on the screen.

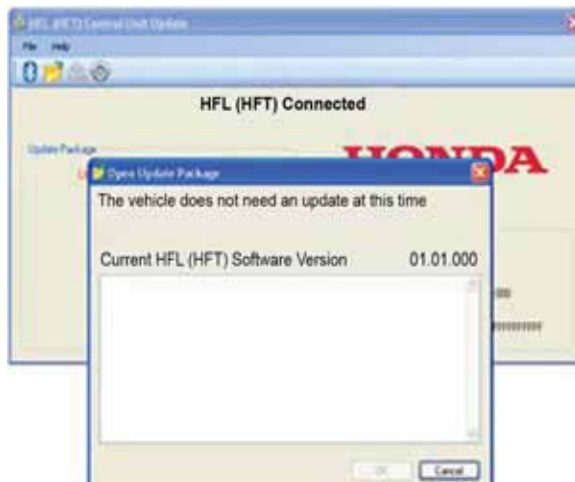


13. Click **OK** to begin the reflash process.



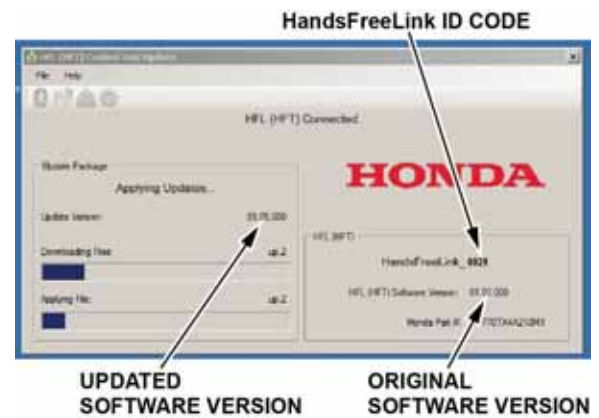
Click "OK"

NOTE: If the HFL software is current and no update is required, the following notification pops up on the HDS laptop.

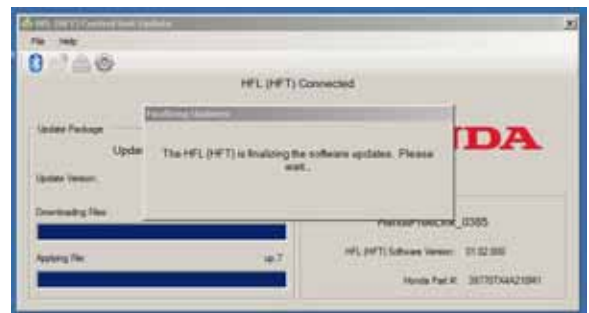


14. The HFL reflash process begins. Allow several minutes for the programming to complete. The blue bars indicate the programming status and progression.

NOTE: Do not turn the ignition OFF while the HDS laptop is transferring files to the HFL control unit. Doing so will damage the HFL control unit. If Bluetooth connectivity between the HDS laptop and the HFL control unit is lost, the ignition must remain ON. Reboot the HDS laptop and restart the HDS laptop. Make sure you use the four-digit PIN you wrote down.



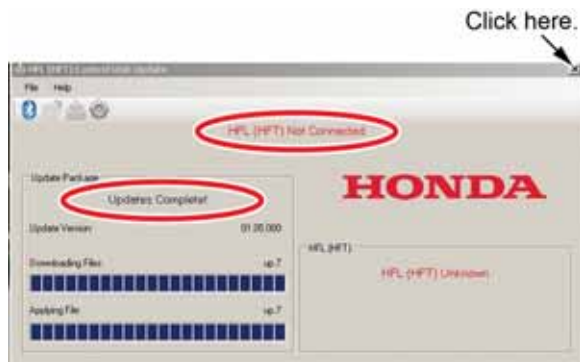
15. In the HDS laptop, a pop-up window alerts you when the reflash process is finalizing, and then another pop-up informs you that the reflash process has completed.



16. In the HFL update tool, click **OK** when the pop-up window indicates the reflash process is complete.
- NOTE: Failure to wait for the HDS laptop message "Updates Complete" to display prior to turning the ignition OFF, will interrupt the HFL programming and will damage the HFL control unit.



17. The HDS laptop indicates the update is complete, and automatically disconnects the Bluetooth connection from the HFL control unit. Close the HDS laptop by clicking on the "X" in the upper right-hand corner.



18. The vehicle's i-MID screen will indicate the update has completed.
- NOTE: Wait at least 10 seconds before continuing to the next step.



19. Do the following to confirm that the HFL control unit has been updated:
- Turn the ignition OFF.
 - Wait 10 seconds, then repeat steps 2 thru 5 to place the audio unit in self-diag mode.

HFL CONTROL UNIT UPDATE PROCEDURE

Vehicles with Navigation

NOTE: Failure to follow the procedures and precautions in this bulletin may damage the HFL control unit.

1. Connect a jumper battery to the vehicle and leave it connected during the entire procedure to maintain a steady voltage.
2. Turn the ignition switch to ON (II).



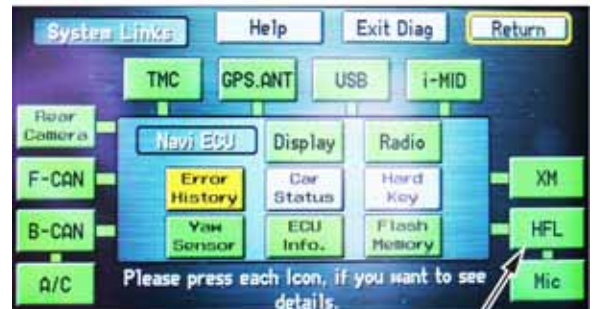
3. Wait for the navigation system to boot up. When the disclaimer screen appears, press and hold the MAP/GUIDE, the DEST, and the CANCEL buttons for at least 5 seconds until the Select Diagnosis Items screen appears.
4. Select Self Diagnosis Mode.



5. The System Link screen appears and does an automatic diagnostic check. Wait a few moments while the process completes (Press each Icon if you want to see details appear). Once completed, select **HFL**.



Wait until diagnostic check is complete.



Select HFL.

- On the HDS laptop, double-click the HFL (HFT) Control Unit Update icon to launch the Honda HFL (HFT) Control Unit Update tool window (HDS update tool).

NOTE: The HDS laptop must be connected to an AC outlet during the reflash process and must be within a distance of 21 feet to the vehicle. Do not allow the HDS laptop to go into sleep or hibernate mode during the reflash process. If this occurs, the Bluetooth connectivity between the HDS laptop and the vehicle's HFL system will be dropped, and the reflash process will be interrupted. It will then be necessary to restart the reflash procedure. See your laptop manufacturer's instructions or your system administrator for assistance to change these settings.



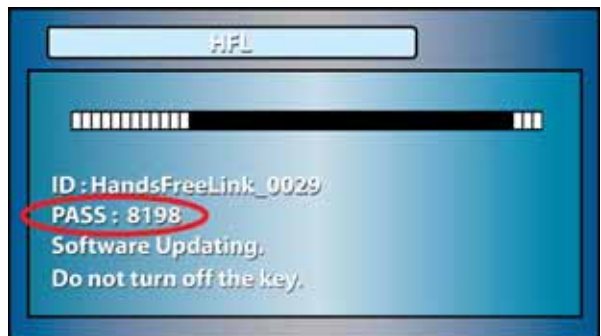
- On the HFL screen, select Software Update. The HFL system enters its reflash readiness mode.

NOTE: If either GA-NET or HFL is "NG", the "Software Update" button will be grayed out, and you won't be able to complete the HFL Control Unit Update Procedure. Troubleshoot for and repair any navigation DTCs before continuing.



- The HFT software update screen displays a four-digit PASS code. Write it down on a piece of paper or on the RO and leave it in the vehicle.

NOTE: This PASS code is required to complete the HFL update and to re-establish communication if the update process is interrupted. If this PASS code is lost, forgotten, or otherwise misplaced and the vehicle's HFL is stuck in reflash mode (due to an incomplete reflash), the HFL control unit must be replaced.



- In the HFL update tool, click on the Bluetooth icon in the upper left corner of the screen to pair with the vehicle's HFL.



NOTE: If an active Bluetooth adapter is not found on the HDS laptop, this error message will appear. Please review the **REQUIRED TOOLS AND EQUIPMENT** section of this publication for a recognized Bluetooth device. Contact your IT support for additional help.



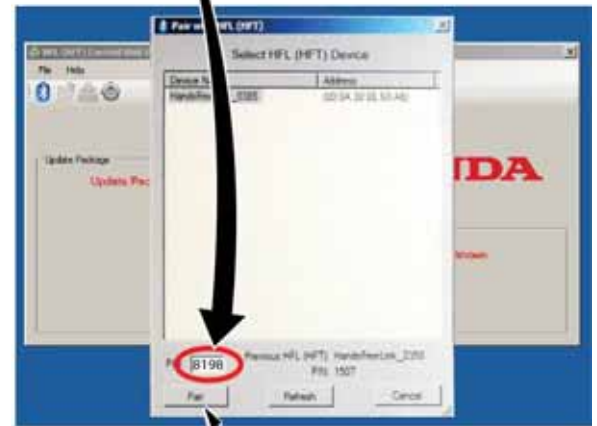
- In the HFL update tool, the "Pair with HFL" window pops up. Wait a few seconds for the display to show "All Detected Bluetooth Devices." If no devices are found after about 30 seconds, click **Refresh**.

NOTE: If the HFL control unit is unable to establish a Bluetooth connection with the HFL App after 5 minutes, it times out. If this occurs, reboot the HDS laptop, turn the ignition OFF, and go back to step 2, and repeat the HFL control unit update procedure.



- In the HFL update tool, once the Bluetooth device has been detected, enter the four-digit PASS code from the vehicle's display screen into the lower left-hand corner of the pop-up window. Click **Pair** to begin the pairing process.

NOTE: Leave the PASS code you wrote down in step 8 in the vehicle. This PASS code is required to complete the HFL update and to re-establish communication if the update process is interrupted. If this PASS code is lost, forgotten, or otherwise misplaced, and the HFL control unit is stuck in reflash mode (due to an incomplete reflash), you must replace the HFL control unit.

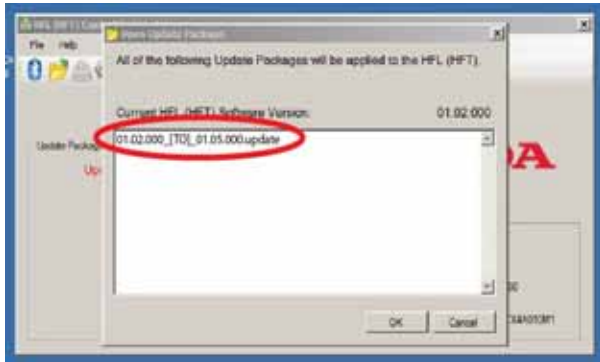


PAIR BUTTON

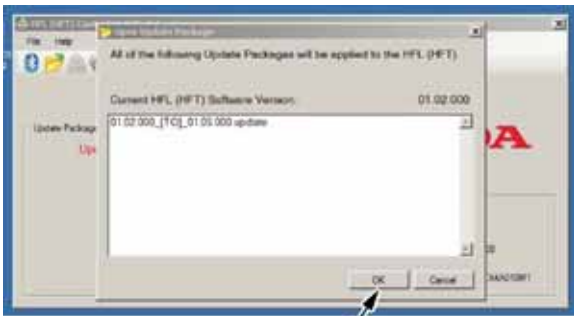
- Wait for the HFL update tool to complete the Bluetooth pairing process.



13. In the HFL update tool, the “Open Update Package” window pops up when the Bluetooth pairing process is complete. The HDS laptop automatically determines which version of the HFL software is present. The compatible updates will be displayed on the HDS laptop.



14. Click **OK** to begin the HFL control unit reflash process.



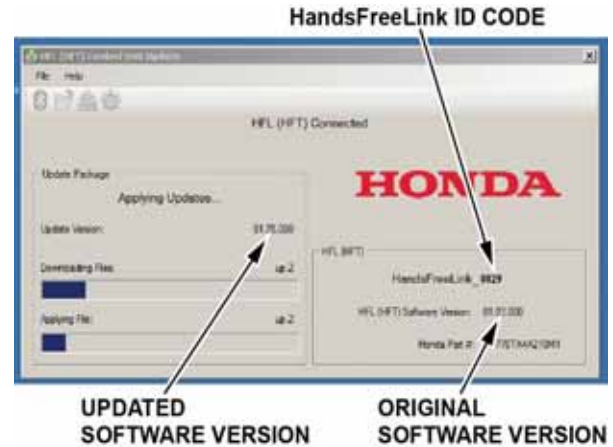
Click "OK"

NOTE: If the HFL software is current and no update is required, the following notification appears on the HDS laptop.

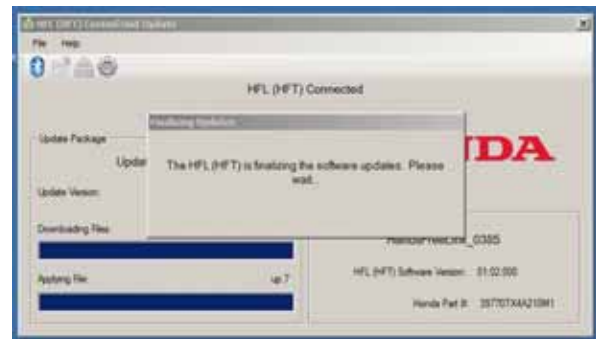


15. The HFL reflash process begins. Allow several minutes for the programming to complete. The blue bars indicate the programming status and progression.

NOTE: Do not turn the engine OFF while the HDS laptop is transferring files to the HFL control unit. Doing so will damage the HFL control unit. If the Bluetooth connectivity between the HDS laptop and the HFL control unit is lost, the ignition must remain ON. Reboot the HDS laptop and restart the HDS laptop. Make sure you use the four-digit PIN you wrote down in step 8.



16. In the HFL update tool, a pop-up window alerts you when the reflash process is finalizing, and then another pop-up informs you that the reflash process has completed.



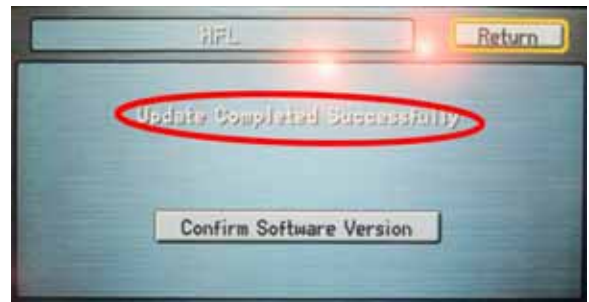
17. In the HFL update tool, click **OK** when the pop-up window indicates the reflash process is complete.
 NOTE: Failure to wait for the HDS laptop message “Updates Complete” to display prior to turning the ignition OFF will interrupt the HFL programming and will damage the HFL control unit.



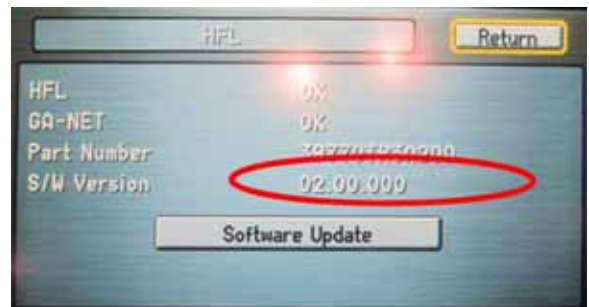
18. The HDS laptop will indicate the update is complete, and automatically disconnects the Bluetooth connection from the HFL control unit. Close the HDS laptop by clicking on the “X” in the upper right-hand corner.



19. On the navigation screen, you should see “Update Completed Successfully.”



20. Verify the HFL update was successful: select Confirm Software Version.
 NOTE: The new software version will now be displayed in the HFL screen.



21. Turn the ignition OFF, then wait 10 seconds and turn the ignition back ON.