



SERVICE BULLETIN

Classification:

AT13-015

Reference:

NTB13-076

Date:

July 30, 2013

2013 ALTIMA SEDAN AND PATHFINDER; TCM REPROGRAMMING SERVICE INFORMATION

APPLIED VEHICLES: 2013 Altima Sedan (L33)
2013 Pathfinder (R52)

SERVICE INFORMATION

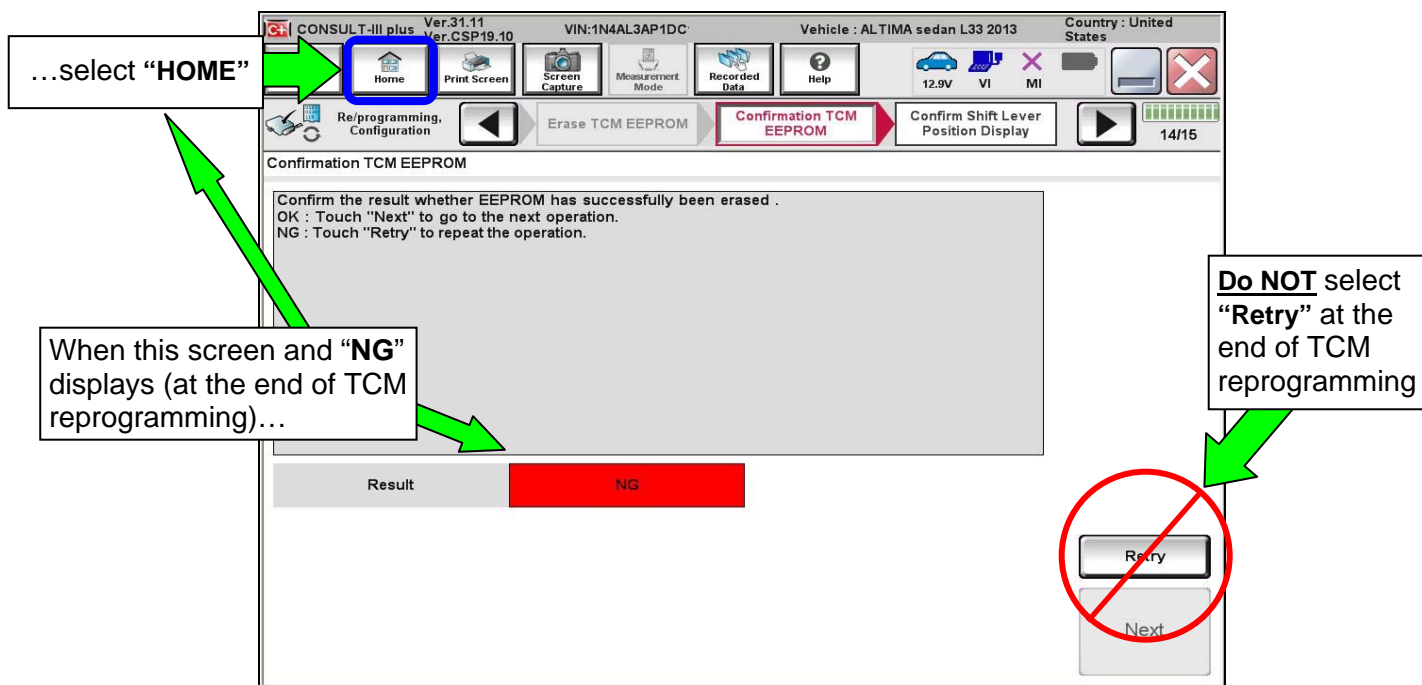
With a recent update to CONSULT III plus, EEPROM would be erased during the TCM reprogramming procedure. **EEPROM is NOT to be erased during TCM reprogramming.**

To prevent this issue, C-III plus software has been returned to the previous version – 31.1. After completing TCM reprogramming, the screen on C-III plus will display the message of “NG” (see next page). When this message displays, select HOME to complete and exit the reprogramming procedure.

If EEPROM has been erased in error, Park and/or Neutral will not display in the combination meter, the CVT will have harsh engagement, and B2604 (PNP Switch) will store in the BCM. You may also see the following DTCs: In ABS, C1154 (PNP Signal), and in the TCM, P2813 (Select Solenoid).

If the calibration data (EEPROM) has been erased, contact TECH LINE for further assistance.

Nissan Bulletins are intended for use by qualified technicians, not 'do-it-yourselfers'. Qualified technicians are properly trained individuals who have the equipment, tools, safety instruction, and know-how to do a job properly and safely. NOTE: If you believe that a described condition may apply to a particular vehicle, DO NOT assume that it does. See your Nissan dealer to determine if this applies to your vehicle.



Be sure to erase All DTCs set during Reprogramming Diagnosis, (All Systems) menu.