

⚠ Connection offline

## Field campaign

<b>Topic</b>	New Continental GT and GTC - V8T Engine control module update (SC13/06)
<b>Market area</b>	Russische Föderation (5RU),China 796 VW Import Comp. Ltd (Vico), Beijing (6796),Russian Federation 935 Volkswagen Group RUS (6935),United Kingdom E01 Bentley UK (6E01),Germany E02 Bentley rest Europe (6E02),Australia E04 Bentley rest Asia and Australia (6E04),United States E05 Bentley USA and rest America (6E05),United Arab Emirates E06 Bentley Middle East and Africa (6E06)
<b>Brand</b>	Bentley
<b>Transaction No.</b>	2033405/2
<b>Campaign number</b>	E782
<b>Note</b>	
<b>Type</b>	
<b>US code</b>	

## Vehicle data

### New Continental GT and GTC

#### Sales types

Type	MY	Brand	Designation	Engine code	Gearbox code	Final drive code
3932*	2012	E		*	*	*
3932*	2013	E		*	*	*
3942*	2012	E		*	*	*
3942*	2013	E		*	*	*

#### Chassis numbers

Manufacturer	Filler	Type	Filler	MY	Factory	From	To	Prod from	Prod to
SCB	*	3W	*	*	C	073356	086436		
SCB	*	ZA	*	*	C	073356	086436		

## Documents

Document name
master.xml

 Connection offline

E782

Transaction No.: 2033405/2

New Continental GT and GTC - V8T Engine control module update  
(SC13/06)

---

## Notes

 Repair instructions

### Technical background

Updated calibration to improve customer functionality of the Electronic Park Brake (EPB) and also improve robustness of the engine diagnostics

### Remedy

This Campaign must be carried out on all vehicles within the affected VIN range to ensure the cars prior to the VIN cut off are all at the same software level

### Customer notification

Customers do not need to be informed directly of this campaign. Please ensure that all affected vehicles are repaired during a service visit. You should also inform your new and used car sales departments so that the vehicles affected can have this Campaign applied immediately (and not just before sale).

### Warranty accounting instructions

Warranty Type	710 or 790
Labour operation code	01 29 00 05
Damage Service Number	E782
Damage Code	00 66
Criteria ID	01
Time	50 Time Units

### Genuine parts

Not Applicable

### Parts supply

Not Applicable

### Parts despatch control

Not Applicable

---

## Repair instructions



### Technical background

Updated calibration to improve customer functionality of the Electronic Park Brake (EPB) and also improve robustness of the engine diagnostics

### Check

If the vehicle is not already listed as repaired in the "Repair history" (in Elsa Pro), check the vehicle for the Campaign identification mark, which is a White paint mark next to the right hand radiator shell fixing as shown in Figure 17, should neither be evident please carry out the required work in accordance with these instructions.

### Control

All Continental vehicles with the V8T engine and manufactured after VIN SCBFZ63W0DC086436 have the latest software installed.

### Genuine parts

Not Applicable

### Work

1. From the Desktop launch the Offboard Diagnostic Information System Service using the Diagstarter icon (Figure 1 Point A)

-Select Offboard Diagnostic Information System (Figure 1 Point B) and follow all on screen prompts

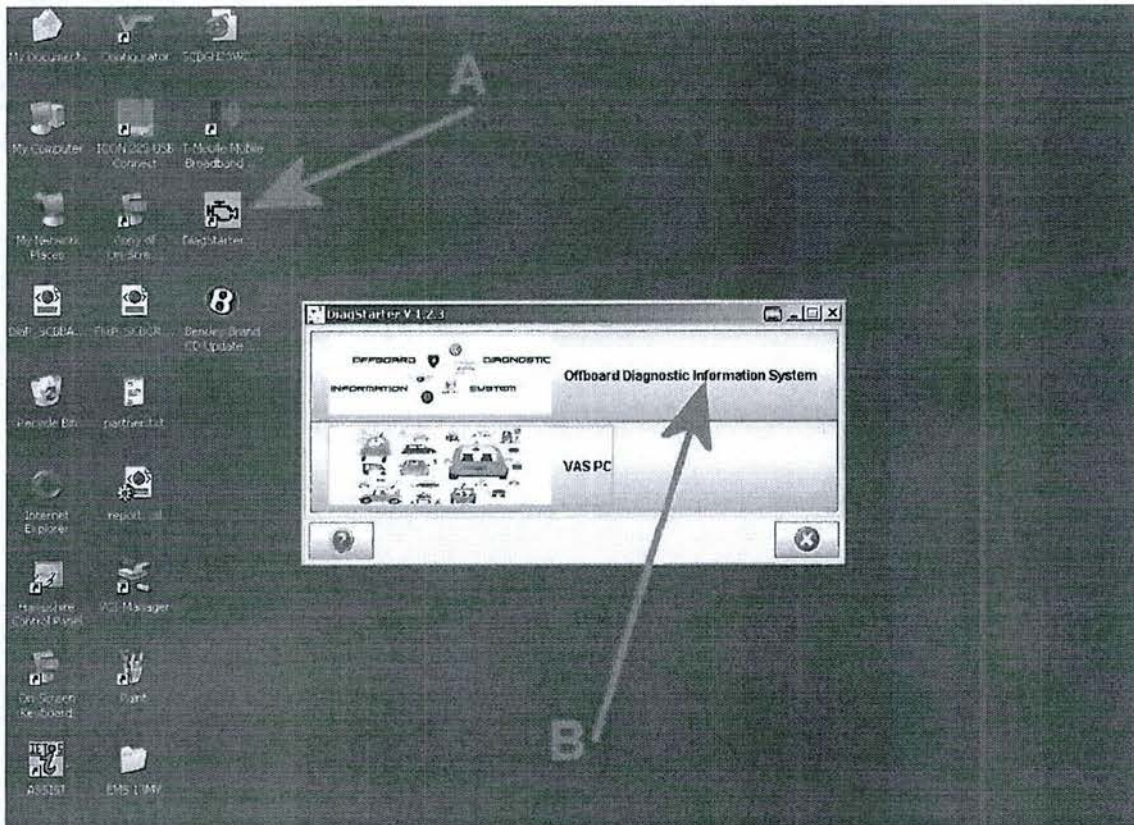


Figure 1

- Ensure the Using guided fault finding box is ticked (Figure 2) - follow all on screen prompts and allow the guided fault finding control module sweep to complete

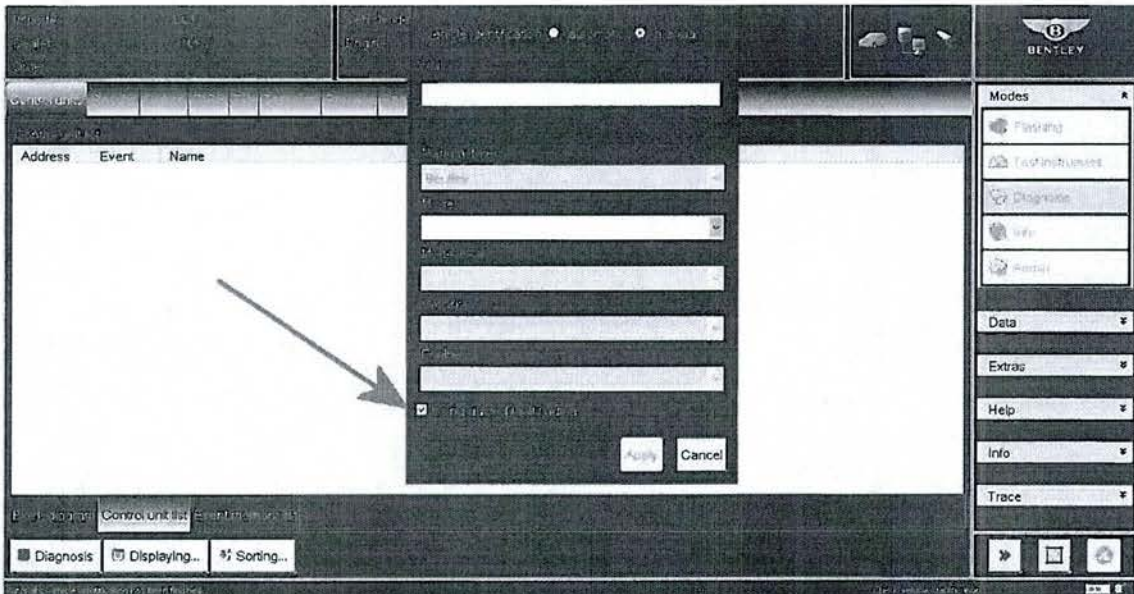


Figure 2

2. When requested to Make a SVM Target/ Actual comparison please select No (Figure 3)

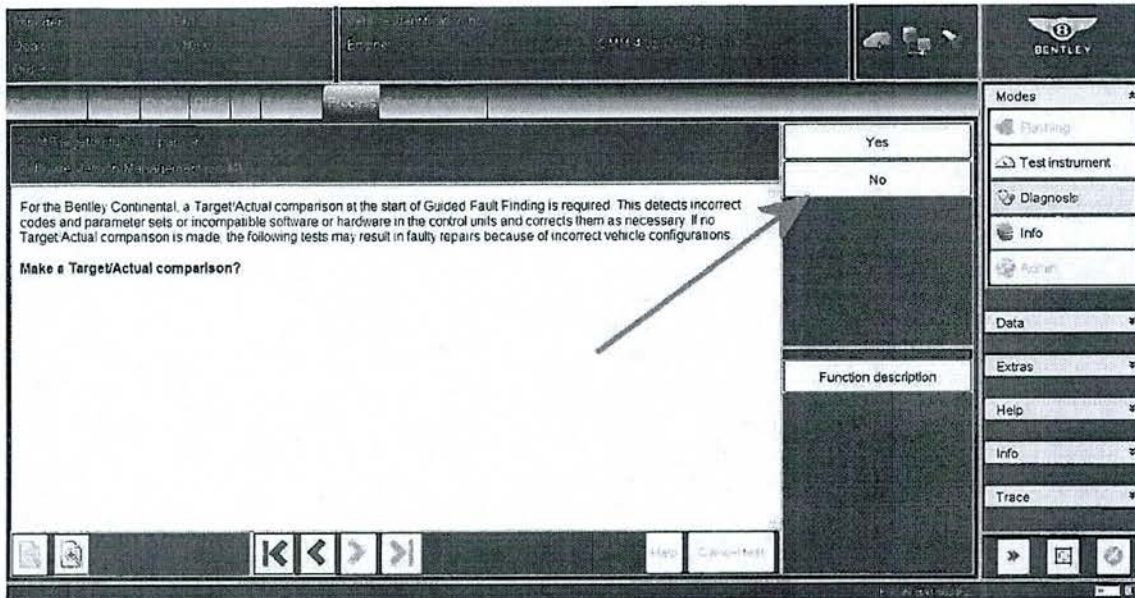


Figure 3

- Once Guided Fault Finding is complete, Select - Test plan as shown in Figure 4 point A - Select own test as shown in Figure 4 point B, (the overview of tests screen will now appear as shown in Figure 5)

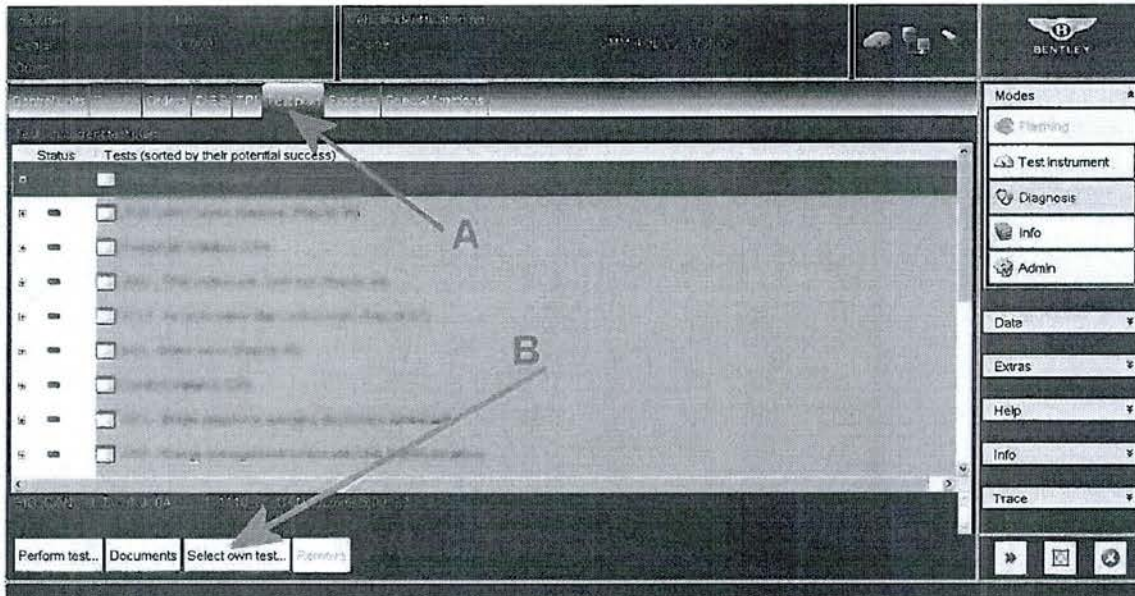


Figure 4

- Referring to Figure 5 (Overview of tests screen) select + Software Version Management (SVM) a drop down box will now appear as shown in Figure 6

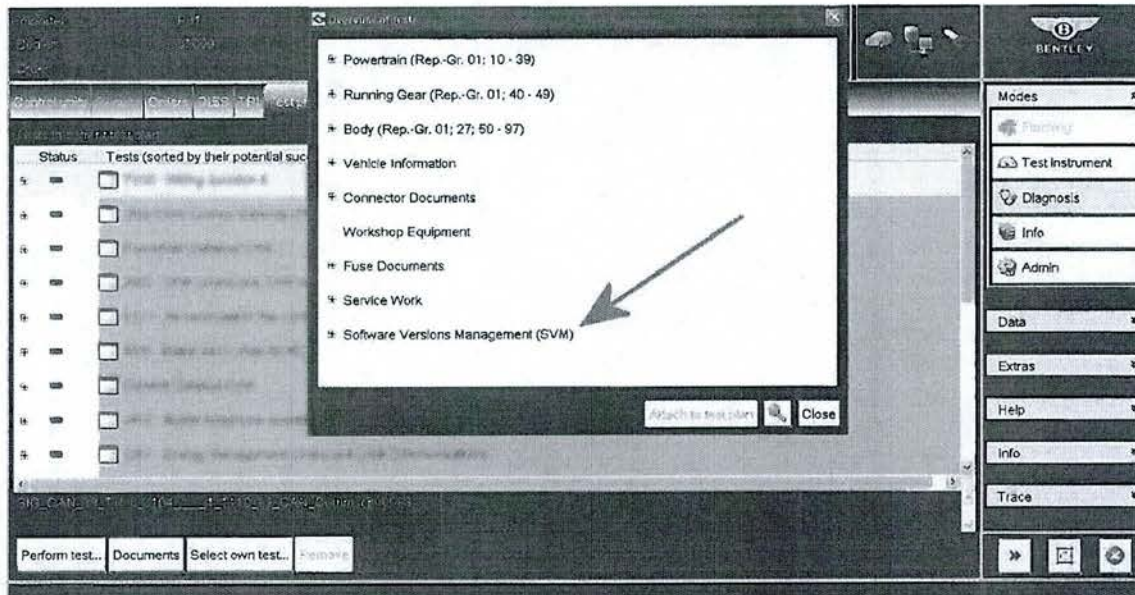


Figure 5

- Referring to Figure 6 - Select SVM - Problem related Hardware/Software Update (point A)
- Select attach test plan (point B) then select Close (point C)

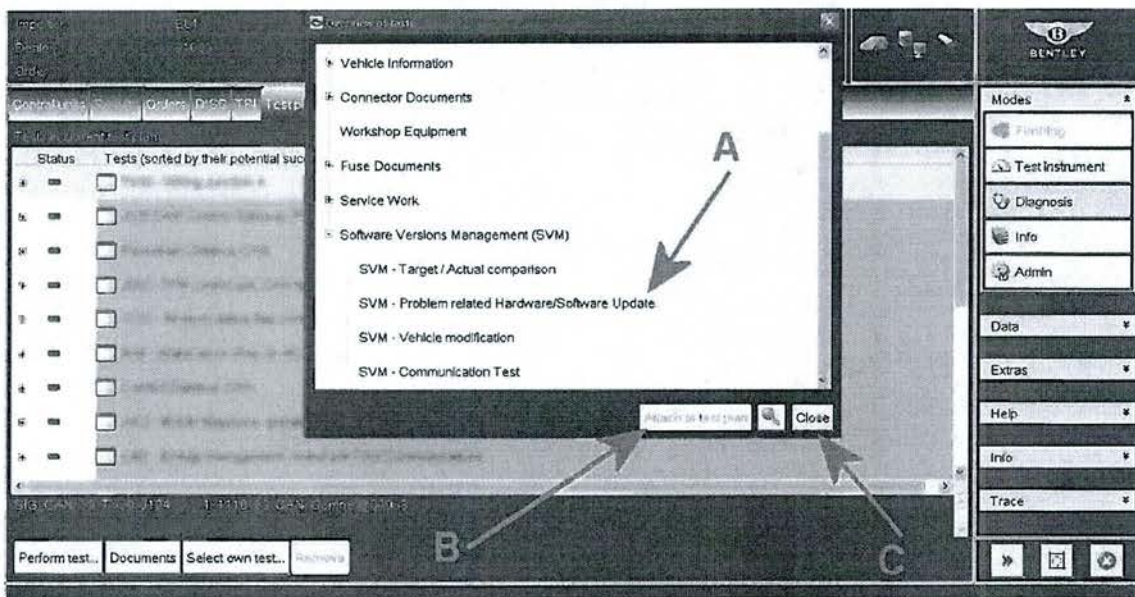


Figure 6

- Referring to Figure 7 - Ensure the Problem related Hardware/Software update is visible and highlighted as shown at Point A
- Select Perform test Point B and follow all on screen prompts

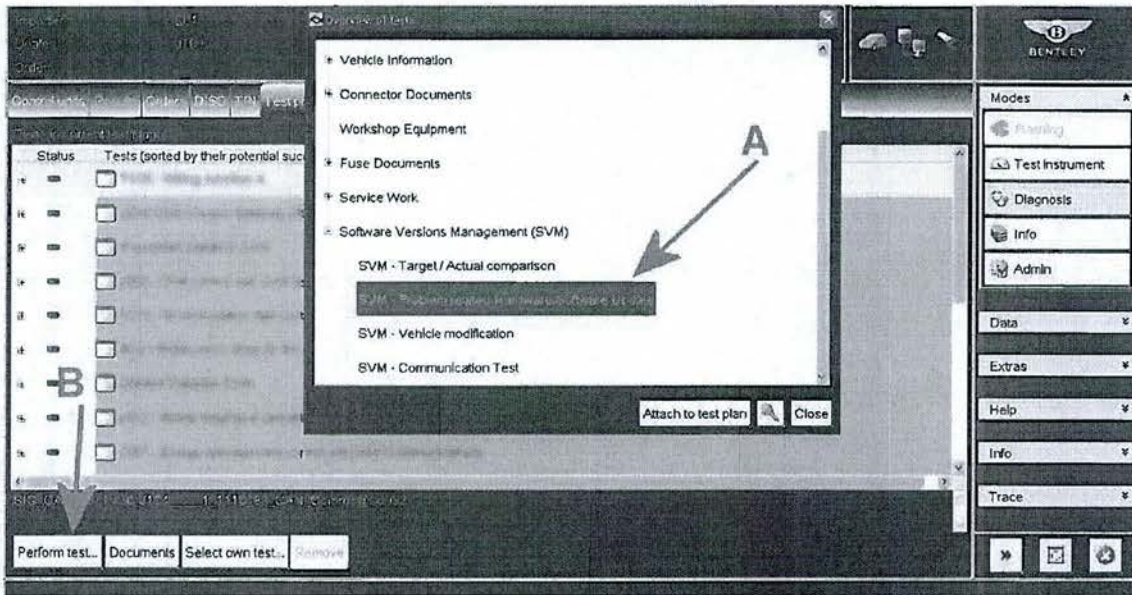


Figure 7

- 3. When prompted enter the SVM code 39001UPDATE01 as shown in Figure 8 Point A
- Select Apply Point B, when prompted to apply the SVM code - select Yes as shown in Figure 9

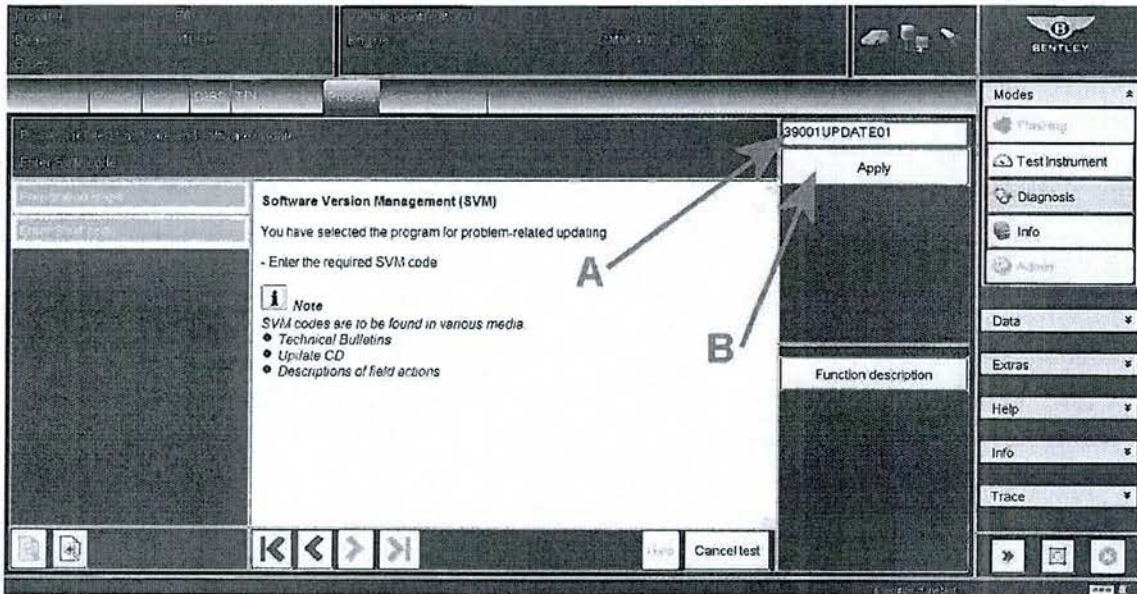


Figure 8

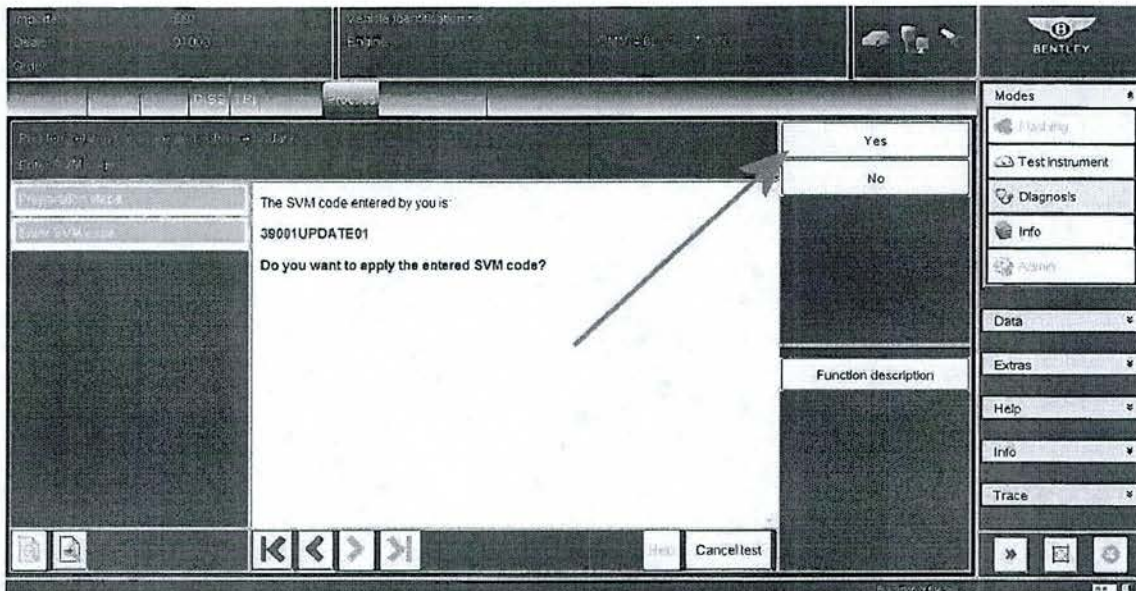


Figure 9

- When requested, enter your GEKO user ID and follow all on screen prompts until you arrive at Figure 10.

- At Figure 10 select **Yes** and follow all on screen prompts until the update programming of the control unit 01- Engine control unit – J623 was successful as shown in Figure 11

**CAUTION:** The update of the Engine control unit takes approximately 5 Minutes to complete Do Not interrupt whilst the update is taking place

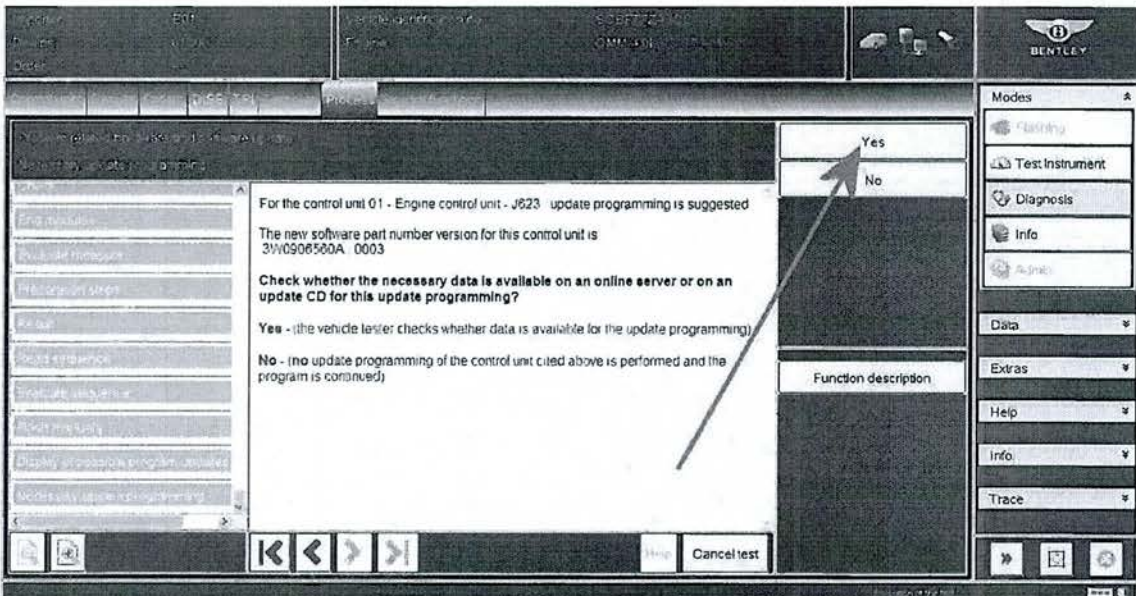


Figure 10

- Referring to Figure 11 select Done/Continue and follow all on screen prompts until **program end**.

**IMPORTANT NOTE:**

A separate SVM Target/ Actual comparison is now required to code the Engine Control Unit this process is detailed in procedure 4

You will be automatically be redirected to the Test plan screen as shown in Figure 12 Point A

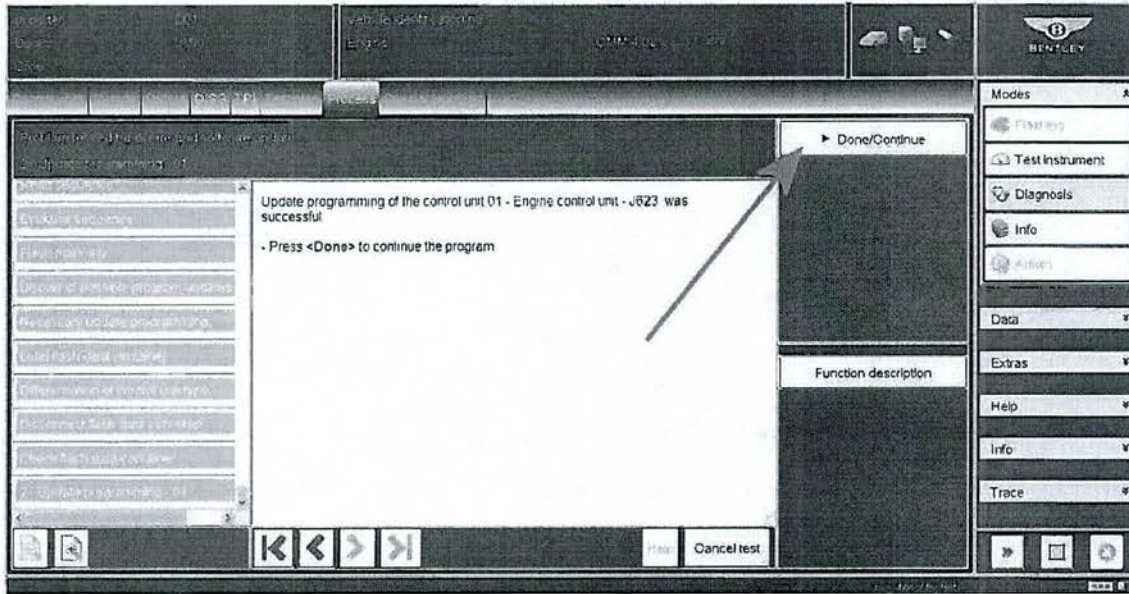


Figure 11

4. Referring to Figure 12, Select own test as shown in Figure 12 point B, (the overview of tests screen will now appear as shown in Figure 13)

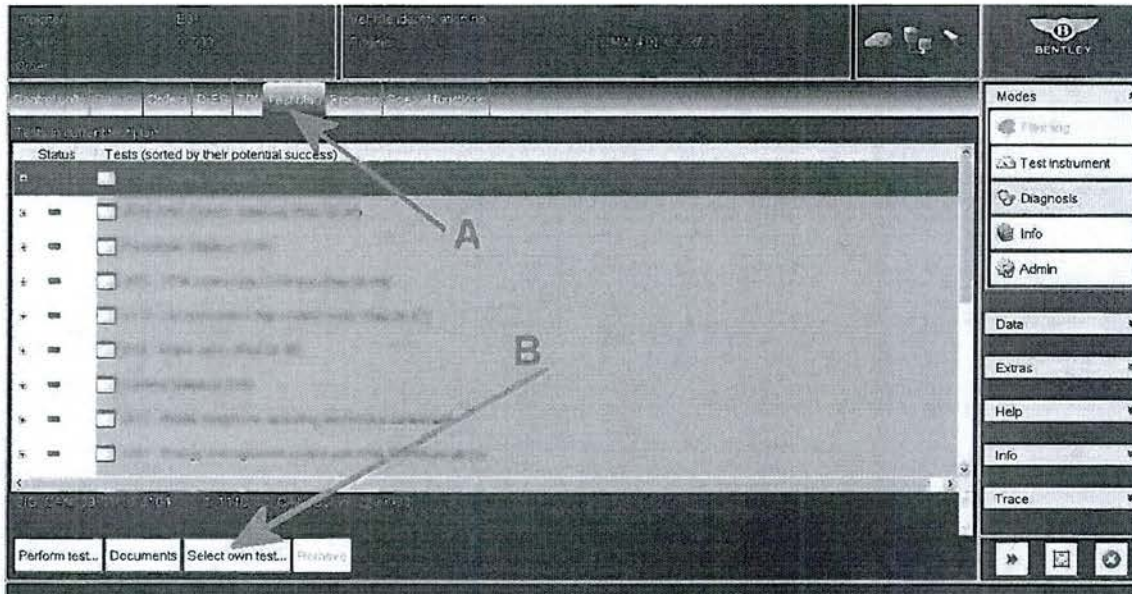


Figure 12

- Referring to Figure 13 Select and highlight SVM - Target/Actual Comparison (Figure 13 Point A)
- Select Attach to test plan (Point B) and select Close (Point C)

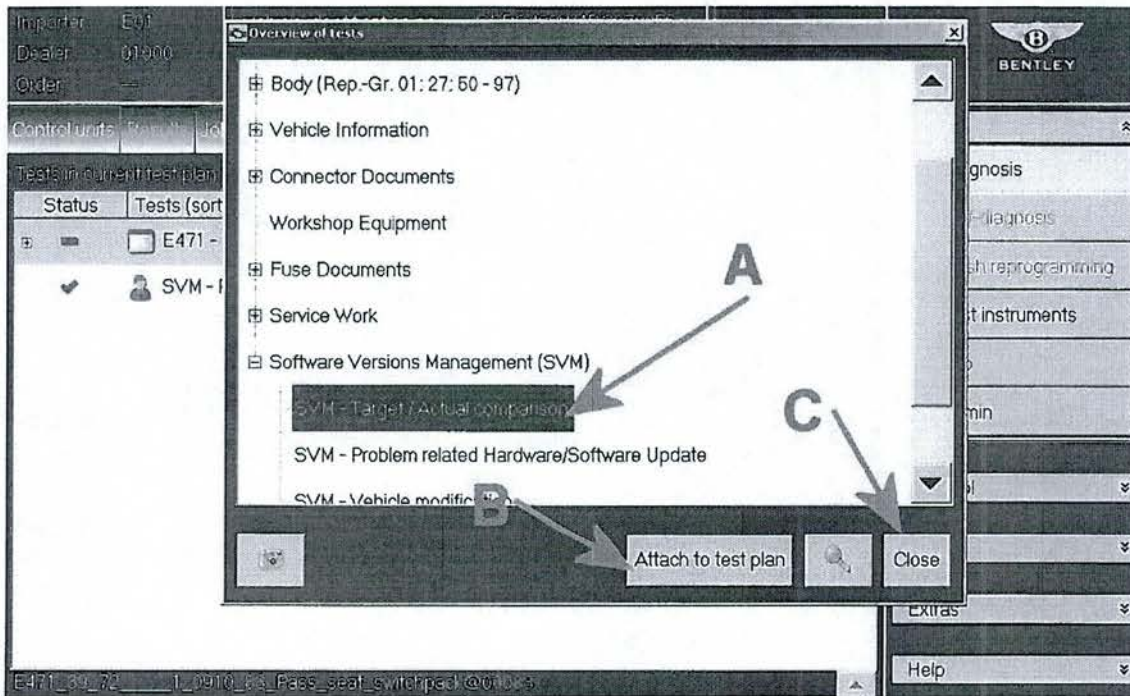


Figure 13

- Referring to Figure 14 (Test plan screen) select and highlight (Point A) SVM – Target/Actual comparison
- Select Perform test (Point B)

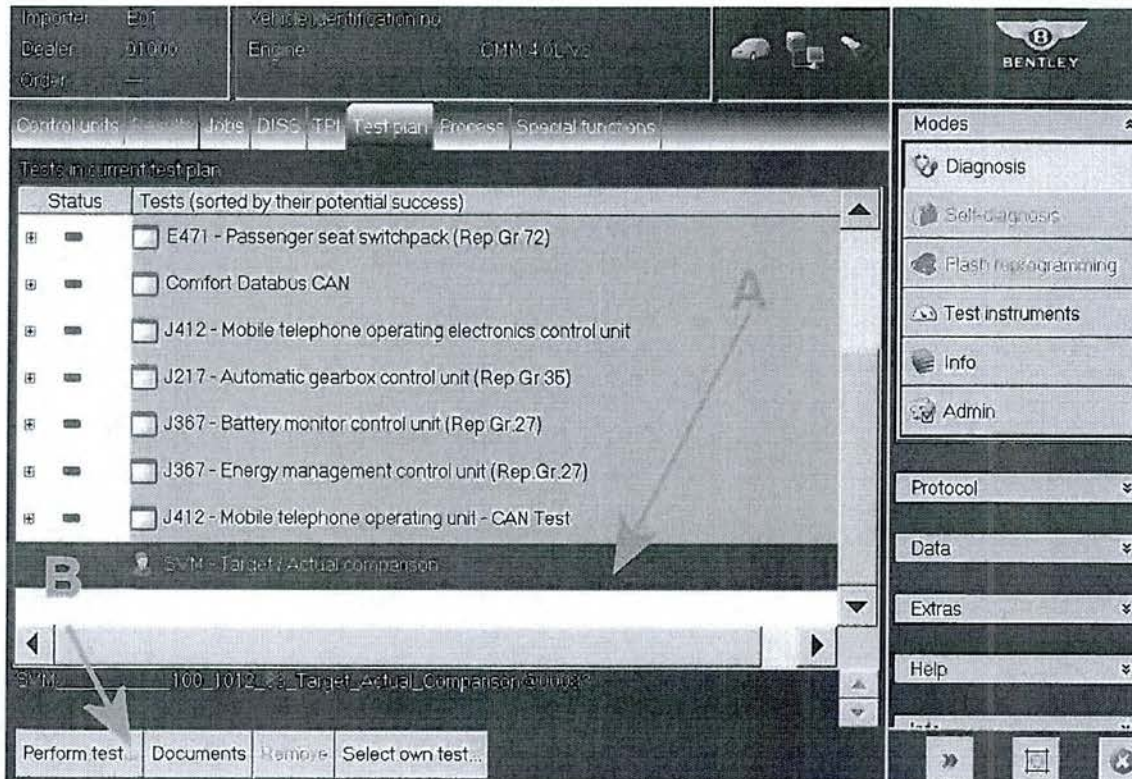


Figure 14

- Follow all remaining prompts until you reach the screen shown in Figure 15 - Select Yes to code the Engine control unit – J623

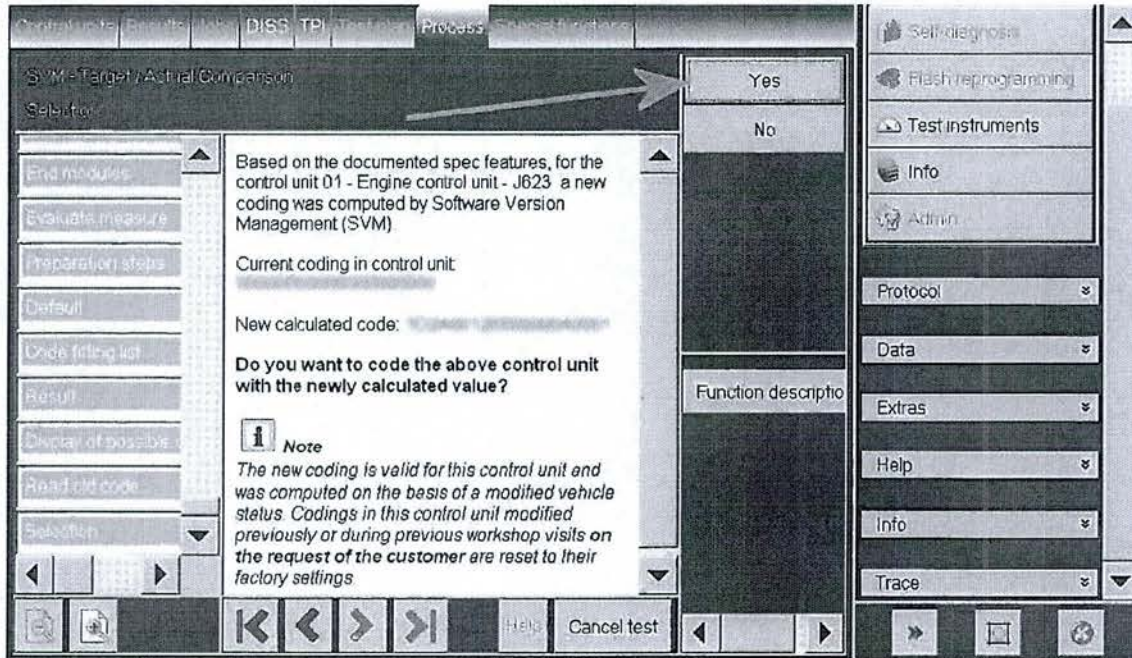


Figure 15

5. Follow all remaining on screen prompts until you arrive at Figure 16 which confirms the Coding of 01 – Engine control unit – J623 was completed successfully and select Done

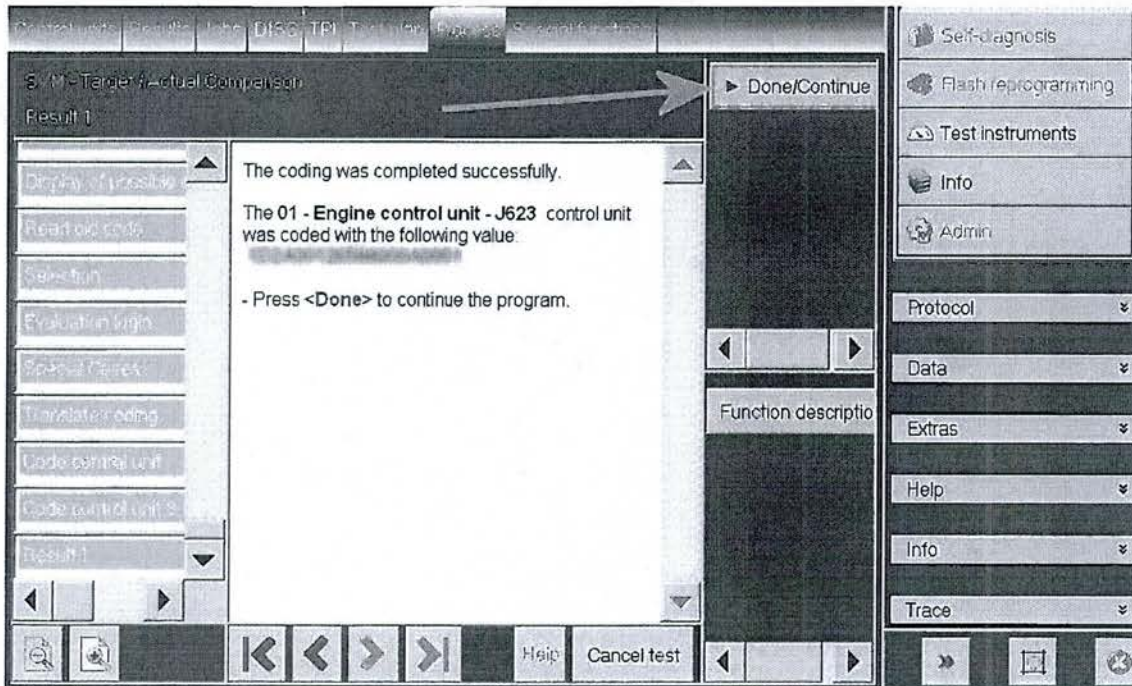


Figure 16

6. Follow all remaining on screen prompts until **Program end**

- Re-check for DTC's and erase as required

7. Place a White paint confirmation mark on the right hand radiator shell fixing as shown in Figure 17

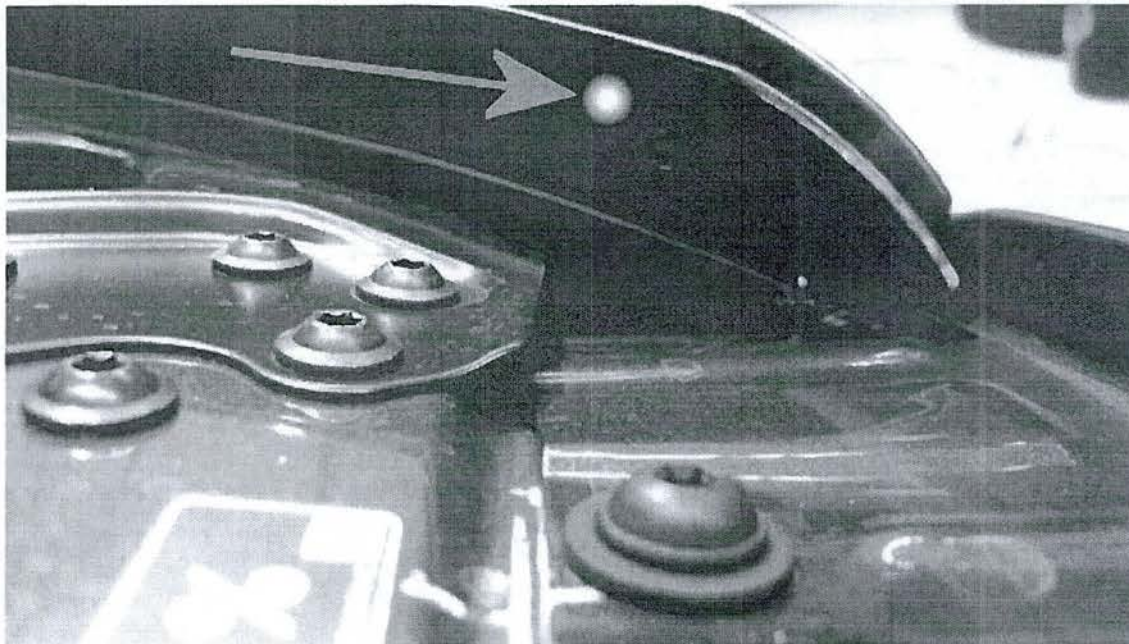


Figure 17

#### Identification

White paint completion mark on the right hand radiator shell fixing (see Figure 17)

▲ Repair instructions ▲ Notes