



# Technical Bulletin

Division: Automotive  
 Category: Technical

Section Title: Engine  
 TSB No. TS 30 06263

**SUBJECT:** Oil Pump Pressure Switch Relocation when Replacing the Oil Pump  
**MODEL(S):** Forenza Sedan/Wagon, Reno (RQ420)  
**YEAR:** All 2004~2008 Model Years

**CONDITION:** New Suzuki replacement oil pumps are supplied with a threaded plug installed in the oil pressure switch port. This plug is difficult to remove without damaging the new oil pump.

**CAUSE:** The new oil pump is manufactured with an oil pressure switch port plug installed using thread sealant which makes removal of the plug difficult without damaging the threads of the new oil pump.

**CORRECTION:** When replacing the oil pump, Suzuki Service Providers are requested to relocate the oil pressure switch to the engine block.

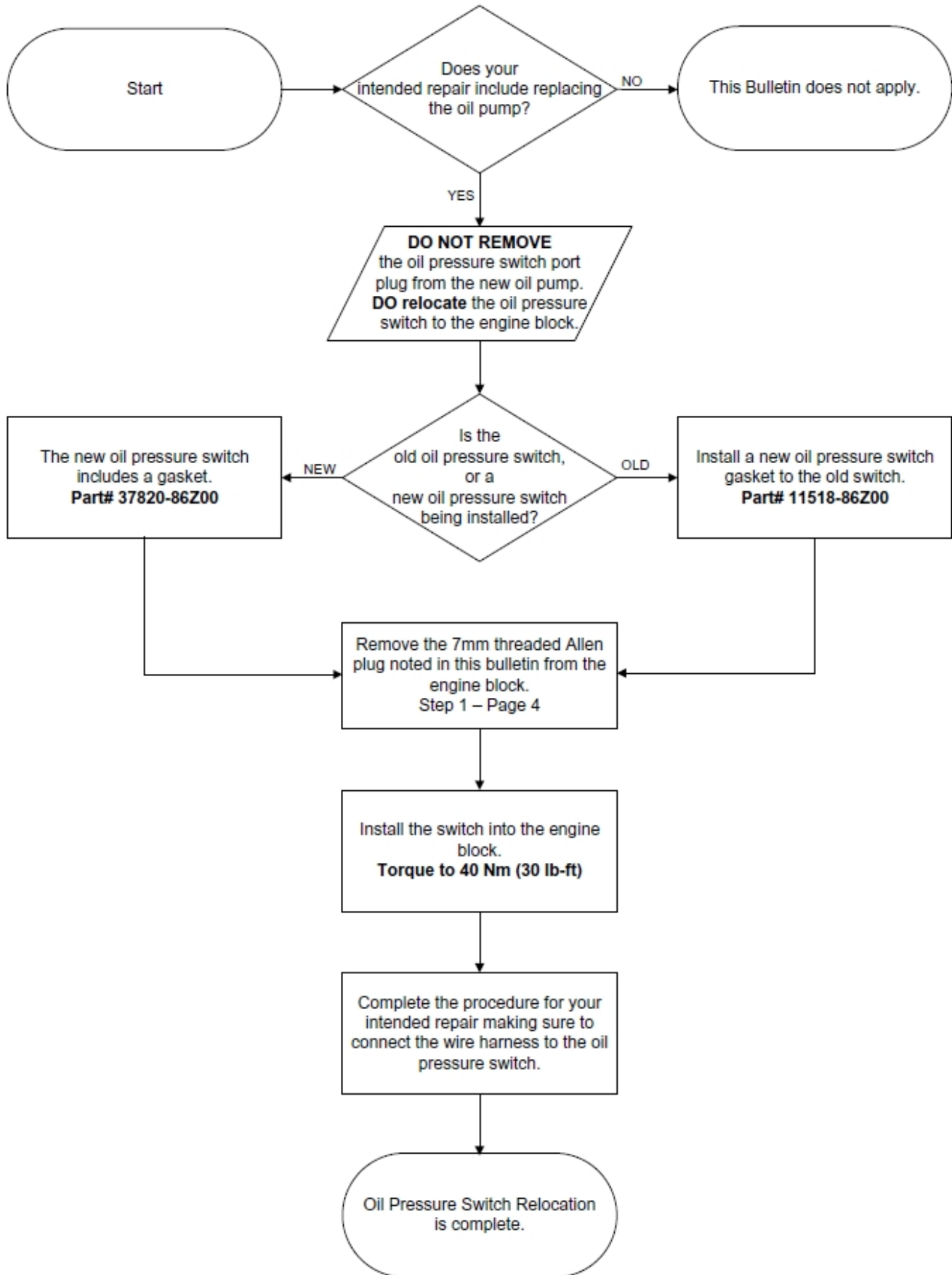
PARTS INFORMATION			
Part Number	Description	Qty.	Notes
11518-86Z00	Gasket, Oil Pressure Switch	1	When relocating the old Suzuki oil pressure switch.
37820-86Z02	Switch, Oil Pressure	1	When ordering a new Suzuki oil pressure switch, a new oil pressure switch gasket will come with the switch.

Technical Service Department  
 Dealership Circulation – Initial and file:

Service Manager	Parts Manager	Service Advisor	Technicians						

Suzuki bulletins are intended for use by professional technicians, NOT a "do-it-yourselfer." They are written to inform these technicians of conditions that may occur on some vehicles, or to provide information that could assist in the proper service of a vehicle. Properly trained technicians have the equipment, tools, safety instructions, and know-how to do a job properly and safely. If a condition is described, DO NOT assume that the bulletin applies to your vehicle, or that your vehicle will have that condition. See your authorized Suzuki Service Provider for information on whether your vehicle may benefit from the information. Suzuki reserves the right to change technical specifications at any time without prior notice.

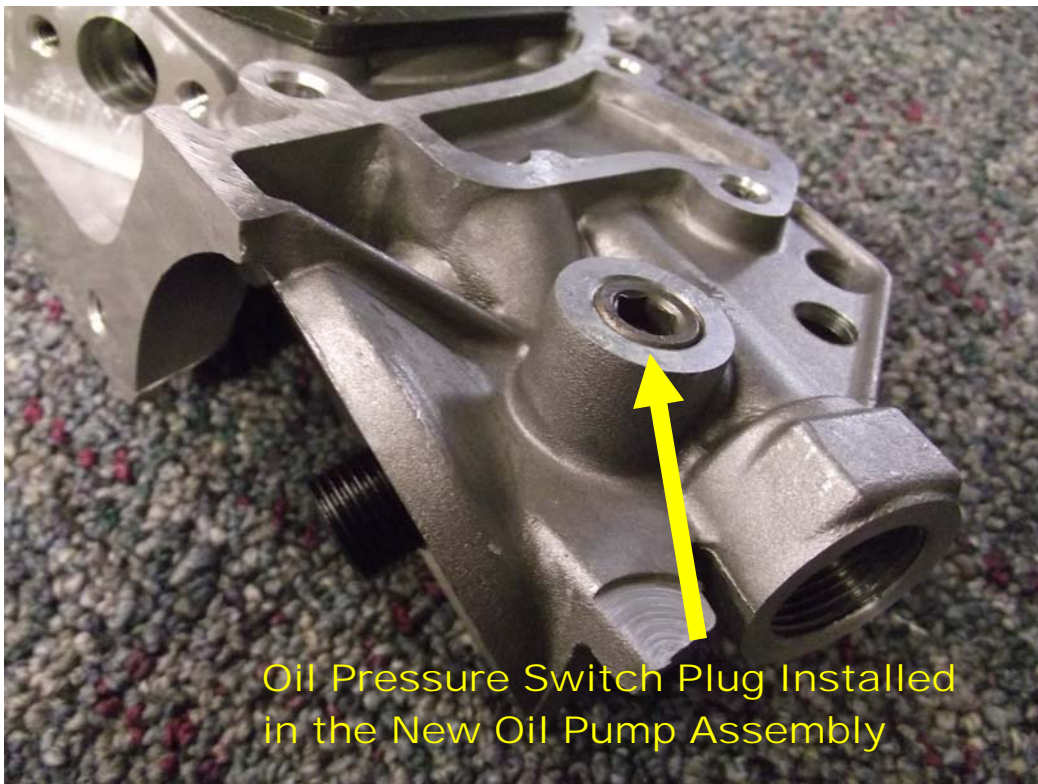
**WORKFLOW**



**NOTICE**

Attempts to remove the oil pressure switch port plug on new Suzuki oil pumps will result in thread damage to the new pump.

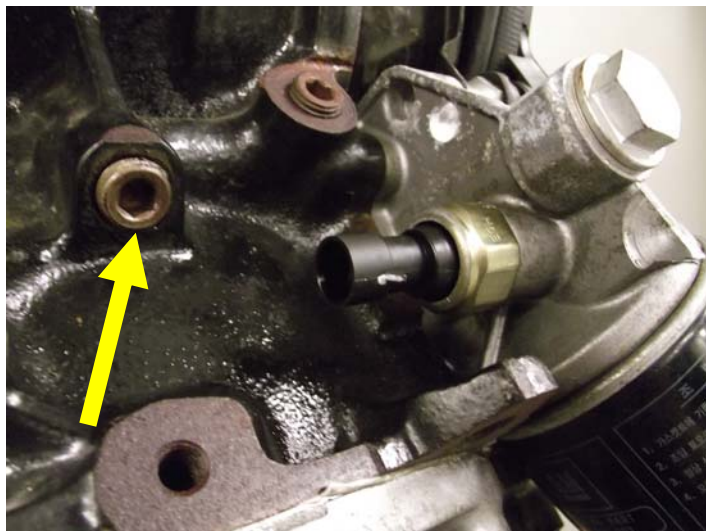
If you are installing a new oil pump, relocate the oil pressure switch onto the engine block, and leave the plug installed in the new oil pump in place (**DO NOT** attempt to remove this plug). Follow the service procedure below to relocate the oil pressure switch.



### Service Procedure

Follow Suzuki service information to complete your intended repair. Use this bulletin to relocate the oil pressure switch if the repairs include a new oil pump.

1. Remove the threaded Allen plug from the engine block (7mm Allen Wrench).



2. If reusing the old oil pressure switch, remove it from the old oil pump.



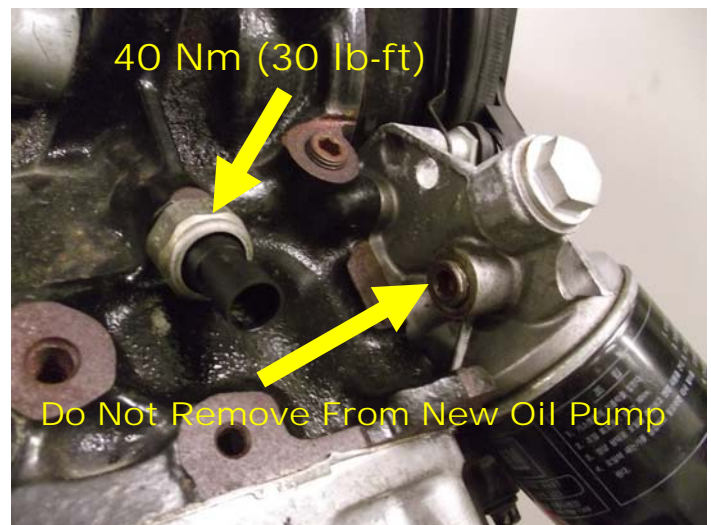
3. Install a new oil pressure switch gasket to the old switch (see Parts Information Table).

**NOTE:**

*If installing a new switch, the new switch will come with a new gasket.*



4. Install the oil pressure switch into the engine block.
  - a. Torque to 40 Nm (30 lb-ft).



5. Connect the existing wire harness to the oil pressure switch. No modifications are required to the harness length or connector for the relocation of the switch.