
Information Bulletin

NUMBER: SI-0012R

Page 1 of 4

SUBJECT: Timing Chain Service Kit for Specific DTC (P0008, P0009, P0016, P0017, P0018, and/or P0019).
MODELS: XL7 (JC636)
YEARS: 2007 Through 2009

For your convenience, two Camshaft Timing Chain Service Kits (part# 12799-78810 and part# 12700-78810) have been developed for the 2007 ~ 2009 Suzuki XL7 (JC636) 3.6L V6 engine. These service kits are now available through your normal parts ordering system.

These kits were designed to provide all normally required parts (minus RTV sealant) necessary for servicing the timing chains when specific timing chain DTC's P0008, P0009, P0016, P0017, P0018, and/or P0019 have set as a result of stretched timing chains. Under this condition no other parts are normally required.

NOTE:

These kits do not contain idler sprockets, camshaft actuator gears, crankshaft driven gear or the chain guides as these parts should not require replacement for a worn timing chain setting DTC's P0008, P0009, P0016, P0017, P0018 and/or P0019.

This revision has been issued to include a second Camshaft Timing Chain Kit that is now available for early 2007 model year engines. Please see the Kit Contents tables on page 2 of this bulletin for content and application information for each kit.

WARRANTY CLAIM INFORMATION
Effective July 1, 2013 warranty claims for timing chain replacement on 2007 ~ 2009 XL7 vehicles must be processed using these kit part numbers; no longer order individual components, but do order a complete kit for the repair of this condition. No longer list individual part numbers for the repair of this condition within the claim submission; reimbursement will be at the total kit price only.

KIT CONTENTS Part# 12799-78810		
Part	Quantity	Comment
Roller Type Chain, Timing 1st	1	Use on Engine# 1014884 and Prior
Roller Type Chain, Timing 2nd	2	Use on Engine# 1014884 and Prior
Gasket, Tensioner Primary	1	
Gasket, Tensioner RH	1	
Gasket, Tensioner LH	1	
Gasket, Valve Cover RH	1	
Gasket, Valve Cover LH	1	
Gasket, Water Pump Inner	1	
Seal, Crankshaft Front Oil	1	
Seal, Oil Control Valve	4	
Tensioner, Primary	1	
Tensioner, RH	1	
Tensioner, LH	1	

KIT CONTENTS Part# 12700-78810		
Part	Quantity	Comment
Silent Type Chain, Timing 1st	1	Use on Engine# 1014885 and Later
Silent Type Chain, Timing 2nd	2	Use on Engine# 1014885 and Later
Gasket, Tensioner Primary	1	
Gasket, Tensioner RH	1	
Gasket, Tensioner LH	1	
Gasket, Valve Cover RH	1	
Gasket, Valve Cover LH	1	
Gasket, Water Pump Inner	1	
Seal, Crankshaft Front Oil	1	
Seal, Oil Control Valve	4	
Tensioner, Primary	1	
Tensioner, RH	1	
Tensioner, LH	1	



Roller Chain Type, Kit 12799-78810



Silent Chain Type, Kit 12700-78810

When servicing the timing chain on this engine application, it is recommended to follow these additional steps ("A" and "B") while the engine is disassembled.

STEP "A" – TIMING CHAIN GUIDES

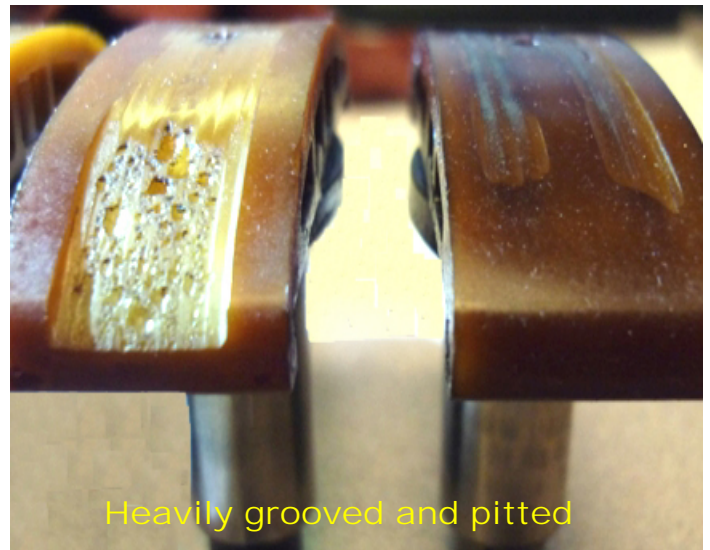
1. Clean and inspect the timing chain guides for reuse.

NOTE:

When servicing the timing chains, the chain guides will not normally require replacement; **they should only be replaced in cases where the guide wear block surface exhibits heavily grooved witness marks or severe pitting in its surface.**



Clean and Reuse



Replace

STEP "B" – NYLON CAMSHAFT THRUST WASHERS

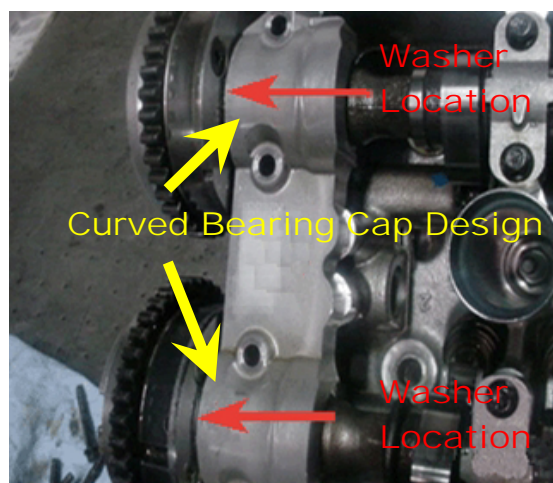
In some instances for engines manufactured before June 5, 2009, nylon camshaft thrust washers may not have been installed and need to be installed between the cylinder head and the intake and exhaust camshaft actuators.

1. Camshaft bearing caps with a curved upper portion require the installation of camshaft thrust washers if not already present. Inspect for the presence of a nylon thrust washer on each of the four camshafts. If the nylon thrust washer is not present, install one between the camshaft actuator and the cylinder head during repair reassembly. Select the proper thrust washer part number based on the camshaft actuator being a four or five screw type.

NOTE:

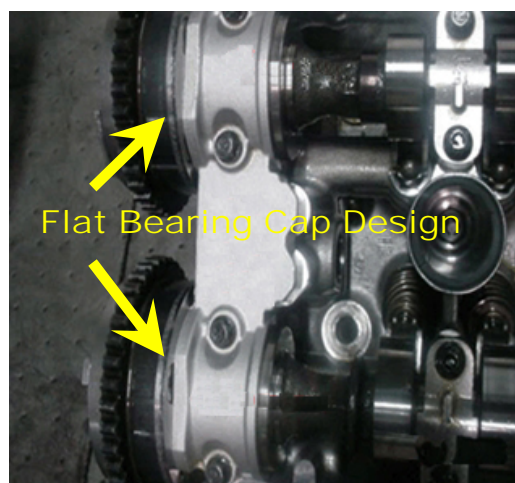
Four screw design use Suzuki part#: 12713-78JA0

Five screw design use Suzuki part#: 12713-78J00



Curved Bearing Cap Design

Thrust washer may not be present.



Flat Bearing Cap Design

Reference only. Does not apply to this step "B".



Four Screw Design

Nylon Thrust Washer Part# 12713-78JA0



Five Screw Design

Nylon Thrust Washer Part# 12713-78J00