



Applies To: **2013 MDX** – From VIN 2HNYD2...DH500001 thru 2HNYD2...DH525406
2013 TL – From VIN 19UUA9...DA000001 thru 19UUA9...DA005530
2013 ZDX – From VIN 2YNYB1...DH500001 thru 2YNYB1...DH500365

June 5, 2013

MIL Comes On With DTCs P0301 Thru P0306

SYMPTOM

The MIL comes on with at least one of the following DTCs:

- P0301 No. 1 Cylinder Misfire Detected
- P0302 No. 2 Cylinder Misfire Detected
- P0303 No. 3 Cylinder Misfire Detected
- P0304 No. 4 Cylinder Misfire Detected
- P0305 No. 5 Cylinder Misfire Detected
- P0306 No. 6 Cylinder Misfire Detected

POSSIBLE CAUSE

The cylinder bore may be out of round causing low compression.

CORRECTIVE ACTION

Inspect the vehicle and, if necessary, replace the engine block.

WARRANTY CLAIM INFORMATION

OP#	Description	FRT
1115A3	Connect the HDS and do the total misfire value inspection.	0.3
A	Do an engine compression test and, if necessary, misfire B inspection.	0.9
1121F6	Replace the engine block.	TBD

Failed Part: P/N 10002-RYE-A10
 Defect Code: 09999
 Symptom Code: 09107
 Skill Level: Repair Technician

DIAGNOSIS

Total Misfire Value Inspection

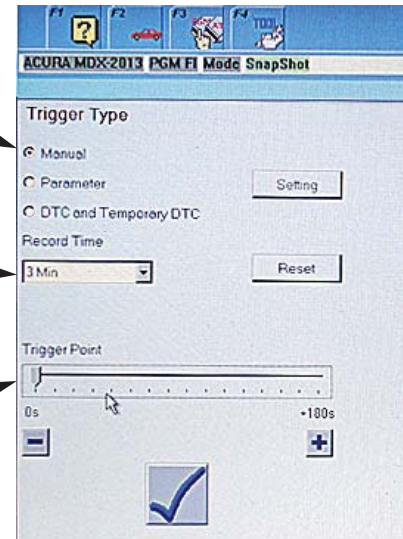
NOTE: If the MIL comes on in an unsold vehicle, make sure the vehicle has at least a quarter tank of fresh, premium fuel, and **do this inspection after completing the TQI procedures.**

1. **Make sure the engine is cold**; connect the HDS to the vehicle and check that the ECT SENSOR 1 temperature value is less than 100 °F (38 °C).
2. Go to PGM-FI, then select Snapshot. Set the HDS to the following snapshot settings:
 - Trigger Type - Manual
 - Record Time - 3 minutes
 - Trigger Point - 0 (all the way to the left)

Select "Manual".

Select "3 Min".

Slide the trigger point scale all the way to the left.

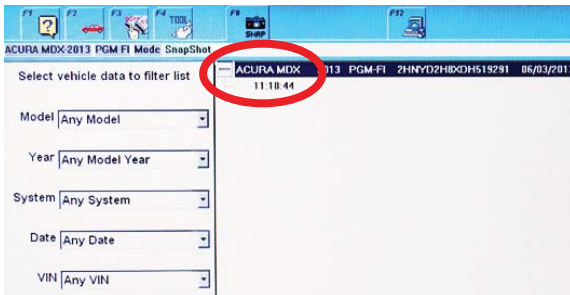


CLIENT INFORMATION: The information in this bulletin is intended for use only by skilled technicians who have the proper tools, equipment, and training to correctly and safely maintain your vehicle. These procedures should not be attempted by "do-it-yourselfers," and you should not assume this bulletin applies to your vehicle, or that your vehicle has the condition described. To determine whether this information applies, contact an authorized Acura automobile dealer.

5. Check each cylinder's MISFIRE B data recorded in the OBS snapshot file.

NOTE: Do the engine compression test first because if you only check the MISFIRE B value, you may not properly diagnose the vehicle.

- If the MISFIRE B value is 10 or less, the vehicle is OK.
- If the MISFIRE B value on any cylinder is more than 10, this bulletin does not apply. Continue with normal troubleshooting for the cause of the misfire.



ACURA MDX-2013 PGM FI Mode SnapShot

2HNYD2H8XDH519291 PGM-FI 2013

Full List Manual

Signal	Value	Units
CATALYST TEMP B2	245.1	°F
MISFIRE	4	
MISFIRED CYL	00001001	
CYL1 TOTAL MISFIRE	3	
CYL2 TOTAL MISFIRE	0	
CYL3 TOTAL MISFIRE	0	
CYL4 TOTAL MISFIRE	1	
CYL5 TOTAL MISFIRE	0	
CYL6 TOTAL MISFIRE	0	
CYL1 MISFIRE	0	
CYL2 MISFIRE	0	
CYL3 MISFIRE	0	
CYL4 MISFIRE	0	
CYL5 MISFIRE	0	
CYL6 MISFIRE	0	
MISFIRE CYCLE	1076	
CYL1 MISFIRE B	3	
CYL2 MISFIRE B	0	
CYL3 MISFIRE B	0	
CYL4 MISFIRE B	1	
CYL5 MISFIRE B	0	
CYL6 MISFIRE B	0	
MISFIRE CYCLE B	1076	

REPAIR PROCEDURE

Replace the engine short block. Refer to the online service manual, enter keywords **ENGINE REMOVAL**, and select **Engine Removal**.