

**SB-10052402-8398**

Countries: CANADA, UNITED STATES Document ID: IK2200069  
 Availability: ISIS, FleetISIS Revision: 7  
 Major System: BUS BODY Created: 4/29/2008  
 Current Language: English Last Modified: 9/10/2013  
 Other Languages: [Français](#), [Español](#), Author: Bob Ford  
 Viewed: 4640

[Less Info](#)
[Hide Details](#)

Coding Information

Copy Link	Copy Relative Link	Bookmark	Add to Favorites	Print	Provide Feedback	Helpful	Not Helpful
		 <a href="#">View My Bookmarks</a>				 779	 568

**Title: Bus Entrance Door Solutions**

**Applies To: CS, IC, BE, CE, FE, RE Buses, Units Built Prior to Sept 15, 2011.**

## DESCRIPTION

The following kit information can be used to resolve Bus entrance door issues. Assistance in determining required repairs for a specific unit is available by starting an iKNOW case file.

Entrance door breaks and cracks are generally the result of a force applied to the doors. Improper adjustment, loose attachment bolts, or an obstruction limiting door travel are the most common. Repairs should not be performed without verifying the condition of these areas to ensure root cause is determined.

## SYMPTOM #1

- Forward door bracket pulled loose from the door
- Reference TSI 06-47-01
- Reinforcement kit to repair door and bracket mounting



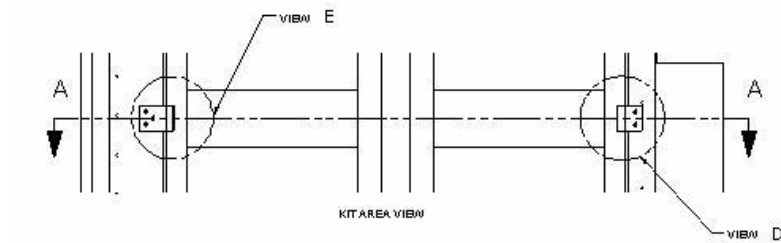
## PARTS INFORMATION

Part #	Description	Qty.
2591019C91	2001 - 2003 All Models	1
2589963C91	2003 - 2005 All Models	1

Kit 2589963C91 can be used on all models, 2005 to current, to repair doors damaged as a result of incorrect adjustment or other damage that results in bracket attachment point failures. Doors with excessive damage should be replaced.

**SYMPTOM #2**

- Entrance doors, hinge edge, bow out while driving
- Complaints of the vertical seal folded into hinge area or not sealing
- Stabilizer is added to the center of the door to reduce door flex



**PARTS INFORMATION**

Part #	Description	Qty.
2595607C91	2001 - Current, All Models, Yellow	1
2595627C91	2001 - Current, All Models, Primed	1
2595616C91	2001 - Current, All Models, White	1

**SYMPTOM #3**

- Entrance doors, air cylinder controlled, partially open while driving
- Complaints of the pressure regulator has been adjusted and issue still remains
- Air door check valve kit can be added to increase cylinder static pressure



**PARTS INFORMATION**

Part #	Description	Qty.
2596211C92	2001 - Current, All Models	1

**NOTE:**

Assistance in determining required repairs for a specific units condition is available by starting an iKNOW case file.

**RELATED IKNOW ARTICLES**

[IK2200009 Bus Entrance Door Side Seal Adjustment](#)

[IK2200087 Bus Entrance Door Adjustment Procedures](#)

 Hide Details

Feedback Information

Viewed: 4639

Helpful: 779

Not Helpful: 568

No Feedback Found