

SB-10052402-4902



Countries:	CANADA, UNITED STATES	Document ID:	IK2200069
Availability:	ISIS, FleetISIS	Revision:	6
Major System:	BUS BODY	Created:	4/29/2008
Current Language:	English	Last Modified:	6/5/2013
Other Languages:	Français , Español ,	Author:	Bob Ford
Viewed:	4328		

[Less Info](#)

Hide Details

Coding Information

Copy Link 	Copy Relative Link 	Bookmark View My Bookmarks	Add to Favorites 	Print 	Provide Feedback 	Helpful 778	Not Helpful 568
----------------------	-------------------------------	--	-----------------------------	------------------	-----------------------------	---------------------------	-------------------------------

Title: Bus Entrance Door Solutions

Applies To: CS, IC, BE, CE, FE, RE Buses, Units Built Prior to Sept 15, 2011.

DESCRIPTION

The following kit information can be used to resolve Bus entrance door issues. Assistance in determining required repairs for a specific unit is available by starting an iKNOW case file.

Entrance door breaks and cracks are generally the result of a force applied to the doors. Improper adjustment, loose attachment bolts, or an obstruction limiting door travel are the most common. Repairs should not be performed without verifying the condition of these areas to ensure root cause is determined.

SYMPTOM #1

- Forward door bracket pulled loose from the door
- Reference TSI 06-47-01
- Reinforcement kit to repair door and bracket mounting



PARTS INFORMATION

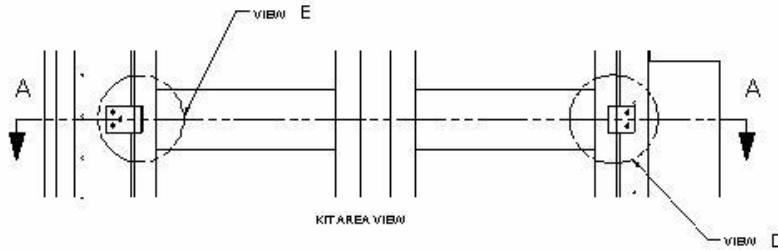
Part #	Description	Qty.
2591019C91	2001 - 2003 All Models	1

2589963C91	2003 - 2005 All Models	1
------------	------------------------	---

Kit 2589963C91 can be used on all models, 2005 to current, to repair doors damaged as a result of incorrect adjustment or other damage that results in bracket attachment point failures. Doors with excessive damage should be replaced.

SYMPTOM #2

- Entrance doors, hinge edge, bow out while driving
- Complaints of the vertical seal folded into hinge area or not sealing
- Stabilizer is added to the center of the door to reduce door flex



PARTS INFORMATION

Part #	Description	Qty.
2595607C91	2001 - Current, All Models, Yellow	1
2595627C91	2001 - Current, All Models, Primed	1
2595616C91	2001 - Current, All Models, White	1

SYMPTOM #3

- Entrance doors, air cylinder controlled, partially open while driving
- Complaints of the pressure regulator has been adjusted and issue still remains
- Air door check valve kit can be added to increase cylinder static pressure



PARTS INFORMATION

Part #	Description	Qty.
2596211C92	2001 - Current, All Models	1

NOTE:

Assistance in determining required repairs for a specific units condition is available by starting an iKNOW case file.

RELATED IKNOW ARTICLES

[IK2200009 Bus Entrance Door Side Seal Adjustment](#)

[IK2200087 Bus Entrance Door Adjustment Procedures](#)

 Hide Details

Feedback Information

Viewed: 4327

Helpful: 778

Not Helpful: 568

No Feedback Found