

Emissions Recall

Subject: DIESEL EXHAUST FLUID (DEF) LINE COVER KIT INSTALLATION

Date: 1-13-2013

Bulletin: RCB-006-11

Campaign #: A7600

Affected Models: Certain 2011MY NE8J, NJ8J, and NV8J equipped with a J08 engine

Important: Verify on the Hino DCS Warranty System that the vehicle still needs to have this work performed.

Condition:

During extreme below freezing ambient temperatures, the Diesel Exhaust Fluid (DEF) may begin to freeze in the supply or return line coming from the DEF Tank. This situation may result in illumination of the Malfunction Indicator Lamp (MIL) and reduced engine power output

Subject Vehicles:

Certain 2011 model year NE8J, NJ8J and NV8J Conventional Hino Trucks which were assembled at the Williamstown, West Virginia assembly Plant and equipped with a J08 engine.

Before You Begin:

Read and understand all instructions and procedures before you begin. Read and observe all Caution and Warning safety alerts that precede these instructions while following these procedures. The alerts help to avoid damage to components, serious personal injury, or both.

!!! WARNING !!!

Park the vehicle on a flat and level surface.

Apply the parking brake.

Shift transmission to NEUTRAL.

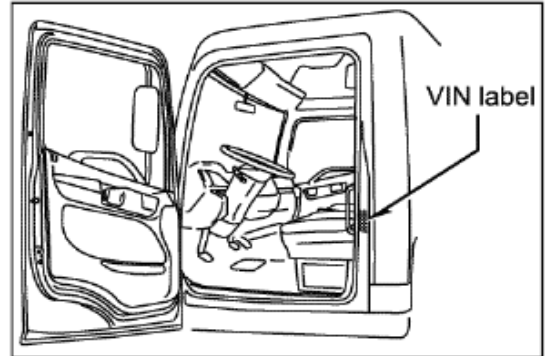
Block the wheels to prevent the vehicle from moving.

Wear safety glasses to prevent eye injuries.

Confirm the engine is stopped, the starter switch is in the off (LOCK) position, and the key is removed.

Emissions Recall

Once Recall Is Completed
 Complete a recall sticker and affix to the left door jam above the V.I.N. decal.



PARTS:

PART NUMBER	DESCRIPTION	QUANTITY
04001073E0	A7600 DEF Line Cover Kit	1
-	Electrical Tape	As Required

Kit Contents	
SZ46401005	Tie Strap
21232E0010	DEF Line Cover



REPAIR PROCEDURE:

1. Park the vehicle on level ground.
2. Confirm the engine is stopped, the starter switch is in the off (LOCK) position, and the key is removed.



Emissions Recall

3. Apply the parking brakes.



4. Chock all of the wheels.

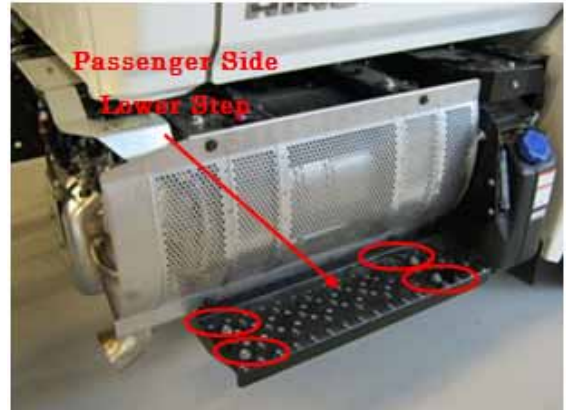


5. Remove the 4 passenger side upper step mounting bolts and then remove the upper step rail.



Emissions Recall

6. Remove the 4 passenger side lower step mounting bolts and then remove the lower step.



7. Remove the 4 mounting bolts for the Selective Catalytic Reduction (SCR) system heat shield and then remove the heat shield.



8. Remove the 3 mounting bolts for the Dosing Control Module (DCU) shield and then remove the shield.



9. Remove the 3 mounting nuts for the DCU and DCU mounting bracket.



Emissions Recall

10. Position the DCU and DCU mounting assembly onto the SCR system. Care should be taken in order NOT to contact the passenger side door or exhaust temperature sensor.



NOTICE: *Electrically disconnecting the DCU will not be required and should not be performed.*

11. Locate the DEF supply and return lines. These 2 lines will need to be insulated with the covers provided in the kit.



12. Disconnect the DEF supply line. To release the line, press downward on the locking tab and then pull the DEF supply line backward from the DEF strainer connection.



Emissions Recall

13. The DEF line cover (21232E0010) should be installed about 47 mm from the end of each DEF line connection. Install the DEF line cover onto the DEF supply line.

NOTE: Make sure seam of split loom is facing down to minimize any water intrusion.



14. Using electrical tape, completely tape the DEF line cover. Insure that both ends of the DEF line cover have electrical tape securing the DEF line cover to the DEF supply line.



15. Reconnect the DEF supply line to the DEF strainer connection and then use the tie strap provided (SZ46401005) to secure the DEF supply line to the coolant supply hose.



16. Disconnect the DEF return line. To release the line, press downward on the locking tab and then pull the line backward from the DEF strainer connection.



Emissions Recall

17. The DEF line cover (21232E0010) should be installed about 47 mm from the end of each DEF line connection. Install the DEF line cover onto the DEF return line.

NOTE: Make sure seam of split loom is facing down to minimize any water intrusion.



18. Using electrical tape, completely tape the DEF line cover. Insure that both ends of the DEF line cover have electrical tape securing the DEF line cover to the DEF return line.



19. Reconnect the DEF return line to the DEF strainer connection and then use the provided tie strap provided (SZ46401005) to secure the DEF return line to the coolant return hose.



20. Install the DCU, DCU mounting bracket and then the 3 mounting nuts. Tighten the mounting nuts to the specified torque.

Specified Torque: 14-19 ft-lbs (18-26 N.m)



Emissions Recall

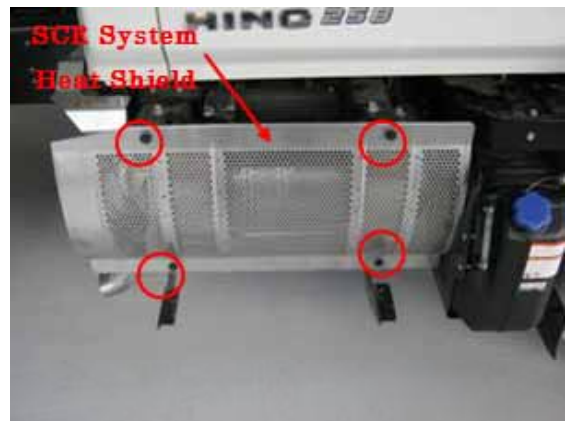
21. Install the DCU shield and 3 mounting bolts. Tighten the mounting bolts to the specified torque.

Specified Torque: 14-19 ft-lbs (18-26 N.m)



22. Install the SCR system heat shield and 4 mounting bolts. Tighten the 4 mounting bolts to the specified torque.

Specified Torque: 14-19 ft-lbs (18-26 N.m)



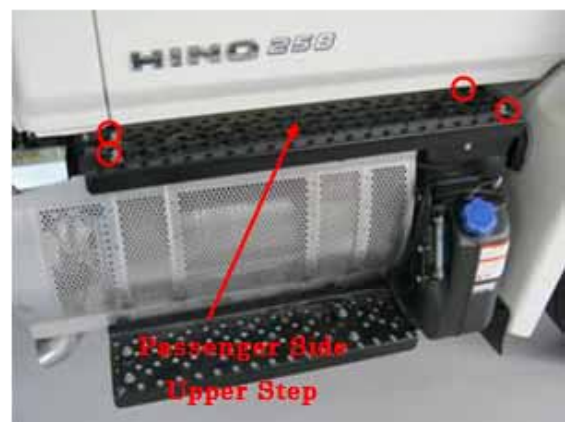
23. Install the passenger side lower step and 4 mounting bolts. Tighten the mounting bolts to the specified torque.

Specified Torque: 14-19 ft-lbs (18-26 N.m)



24. Install the passenger side upper step and 4 mounting bolts. Tighten the 4 mounting bolts to the specified mounting torque.

Specified Torque: 14-19 ft-lbs (18-26 N.m)



Emissions Recall

25. Review the installation of the SCR Kit and insure that there are no leaks from the DEF lines and that each fastener which was loosened has been tightened to its specified torque.

26. The installation of the SCR kit is complete. The vehicle can now be released back to the customer.

CLAIM APPLICATION

- a) Campaign No: A7600
- b) Labor charge: 0.6hr / unit
- c) Warranty code: 1154698
- d) Operation code: 11550AOT
- e) Original part #: 9999999999