

VOLUNTARY CAMPAIGN BULLETIN

SUBJECT:	BURNER CONTROL UNIT (BCU) SOFTWARE ENHANCEMENT
DATE:	1-11-2013
BULLETIN NO.:	RCB-009-12
CAMPAIGN NO.:	A8420
AFFECTED MODELS:	Certain 2011, 2012 and 2013 model year NE8J, NJ8J, NV8J vehicles.

Important: Verify on the Hino DCS Warranty System that the vehicle needs to have this work performed.

CONDITION:

When DPF (Diesel Particulate Filter) regeneration is restarted after turning off the exhaust brake, the ignition of the burner system may perform improperly; this may cause the MIL (Malfunction Indicator Lamp) in the instrument cluster of the vehicle to turn on. An enhanced BCU software program has been released to provide improved DPR (Diesel Particulate Active Reduction) system operation.

SUBJECT VEHICLES:

Certain 2011, 2012 and 2013 model year NE8J, NJ8J, NV8J Conventional Hino Trucks which were assembled at the Williamstown, West Virginia assembly plant and equipped with a J08 engine.

BEFORE YOU BEGIN:

Read and understand all instructions and procedures before you begin. Read and observe all Notes, Cautions and Warning safety alerts that precede these instructions while following these procedures. The alerts help to avoid damage to components, serious personal injury, or both.

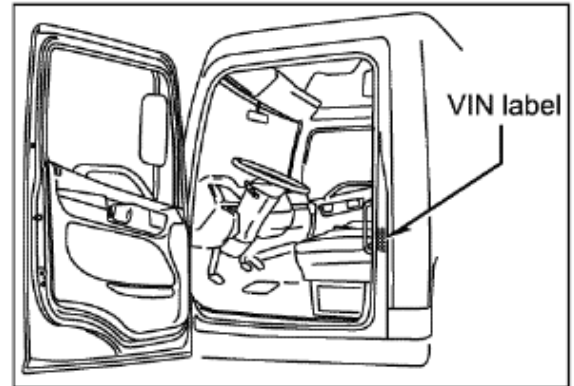
!!! WARNING !!!

- Park the vehicle on a level and solid surface and apply the parking brake.
- Confirm the engine is stopped, the starter switch is in the off (LOCK) position, and the key is removed.
- Wear safety glasses to prevent eye injuries.
- Place wheel chocks in front of and behind all wheels.
- A battery charger is installed on the vehicle to insure battery power does not go low during BCU reprogramming.
- The laptop battery state is fully charged or a remote AC power supply is hooked to the laptop to insure the battery power does not go low during BCU reprogramming.

VOLUNTARY CAMPAIGN BULLETIN

Once Recall Is Completed

Complete a recall sticker and affix to the left door jam above the V.I.N. decal.



PART:

PART NUMBER	DESCRIPTION	QUANTITY
25F7	Burner Control Unit (BCU) Software	1

VEHICLE PREPARATION:

1. Park the vehicle on level ground.

2. Confirm the engine is stopped, the starter switch is in the "LOCK" position and the key is removed.



VOLUNTARY CAMPAIGN BULLETIN

3. Apply the parking brakes.



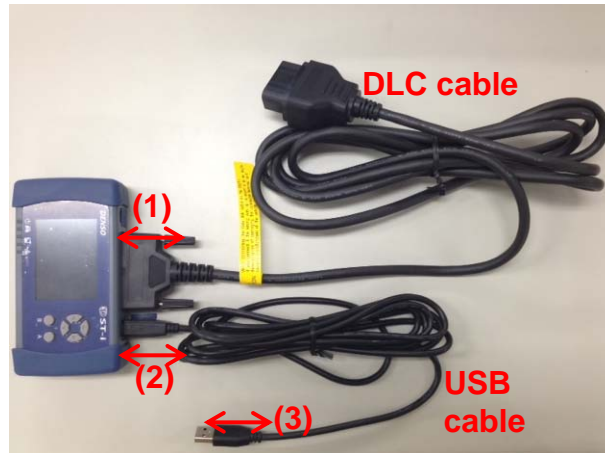
4. Chock all of the wheels.



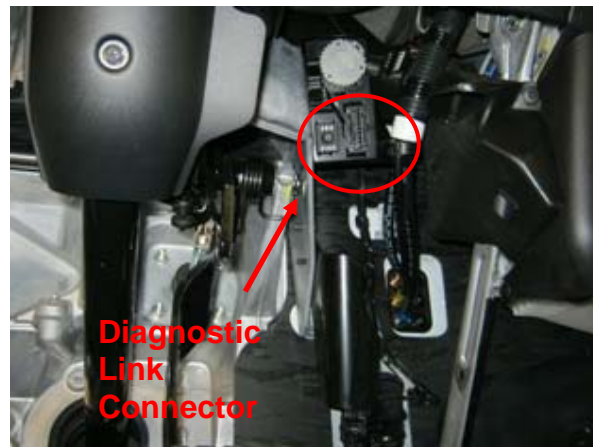
VOLUNTARY CAMPAIGN BULLETIN

ECU REPROGRAMMING PROCEDURE:

1. To assemble the interface cable, perform the following steps.
 - a. Connect the DLC (Diagnostic Link Connector) Cable to the DST-i.
 - b. Connect the USB Cable to the DST-i.
 - c. Connect the USB connector to the USB port on your computer.



2. Connect the remaining DLC cable connector to the vehicle's DLC connector. The DLC connector is found under the dash on the right side of the steering column.

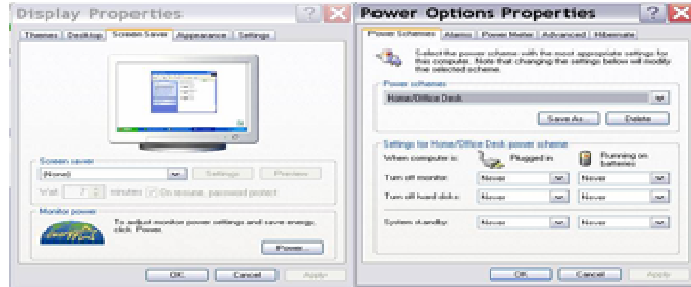


NOTE: Only the DST-i is acceptable for this procedure.

VOLUNTARY CAMPAIGN BULLETIN

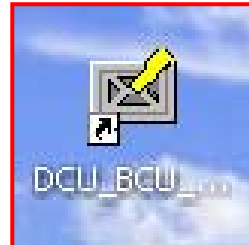
WARNING: Disable the computer features listed below. Failure to disable these features may severely damage the vehicle’s Burner Control Unit (BCU).

- ✓ Screen saver
- ✓ Energy saving features
 - Monitor
 - Hard disks
 - System standby

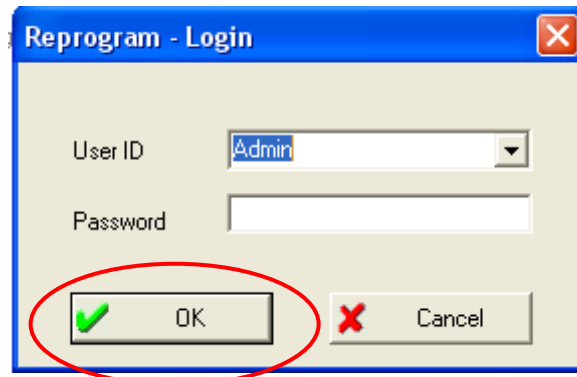


NOTE: The illustrations above depict what you will see on your computer screen with regard to the features which must be disabled. The location on the screen of the features to be disabled will vary based upon the operating software. Consult your IT department as required.

3. On your computer, locate the “DCU_BCU_Hino Reprogram Manager” icon and open it.

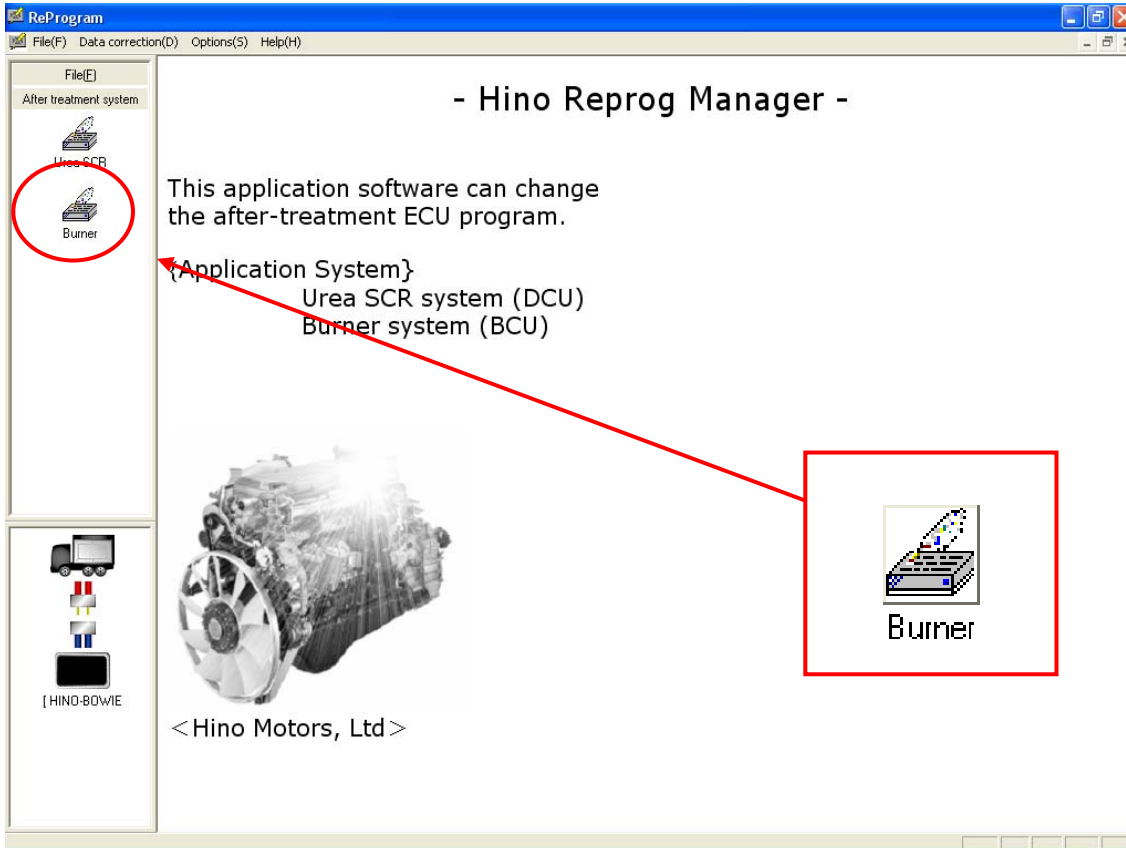


4. The DCU_BCU_Hino Reprogram Manager will prompt you for a password. Enter your password and then select the “OK” icon.



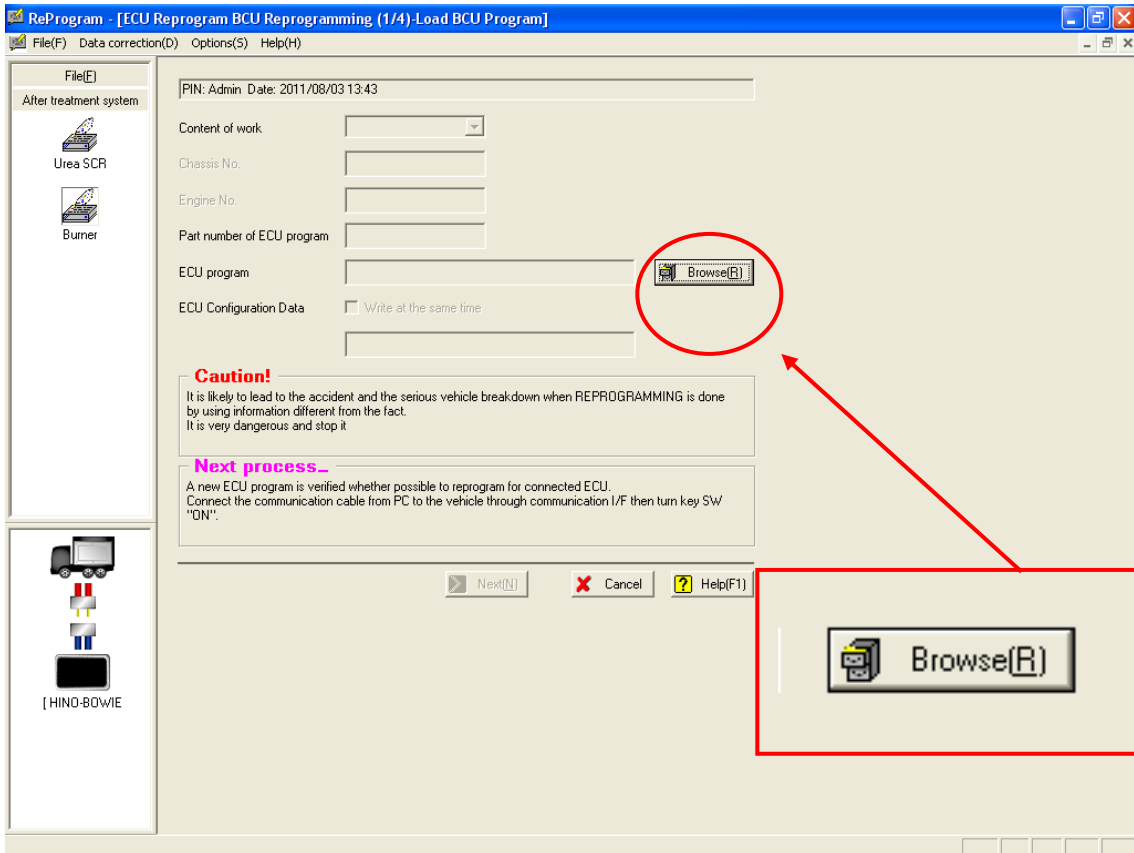
VOLUNTARY CAMPAIGN BULLETIN

5. Select the “Burner” icon.



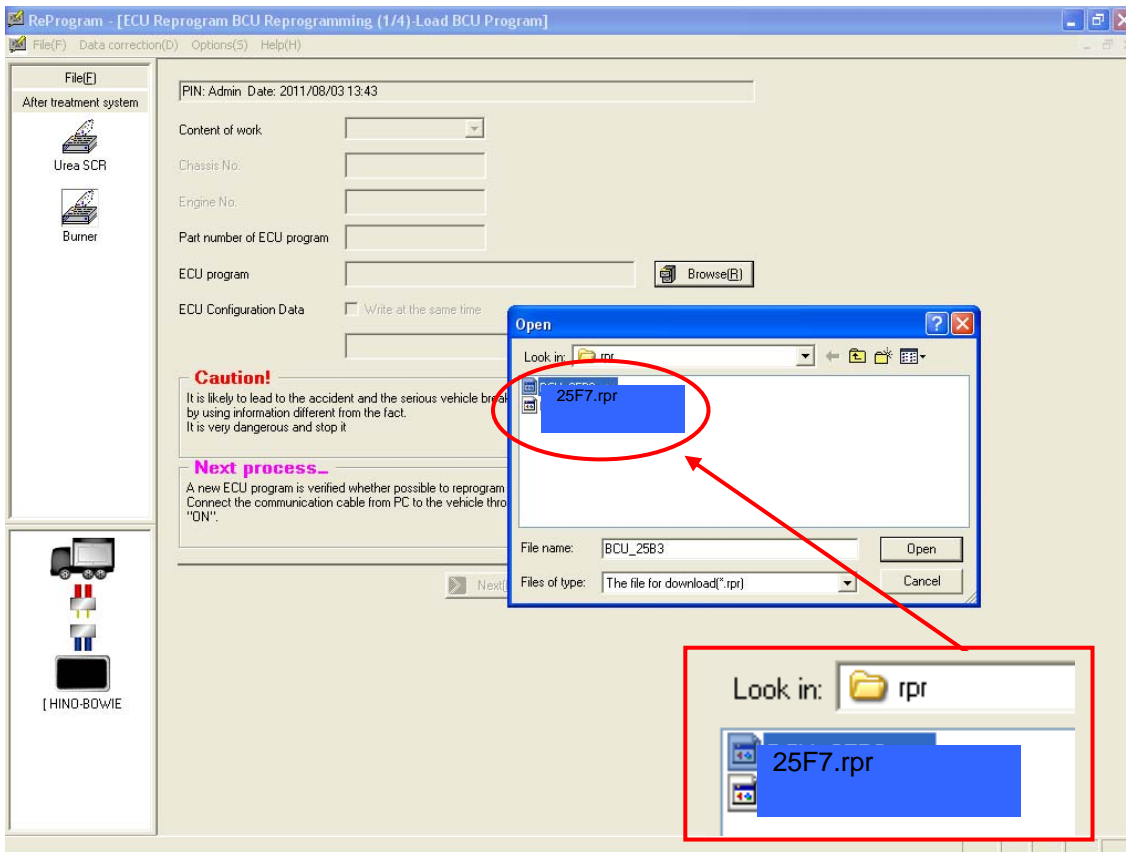
VOLUNTARY CAMPAIGN BULLETIN

6. Select the “Browse (R)” icon.



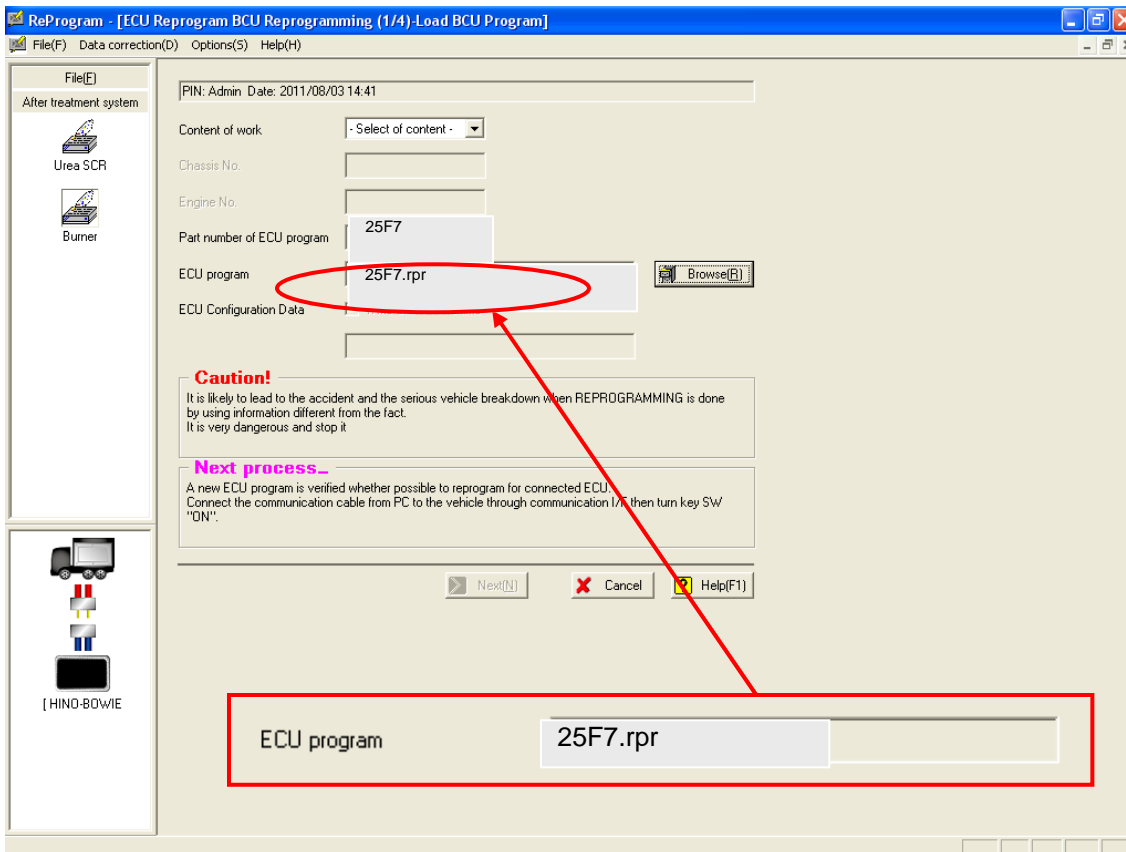
VOLUNTARY CAMPAIGN BULLETIN

7. Locate and open the “25F7.rpr” file that contains the revised Burner Control Unit (BCU) software.



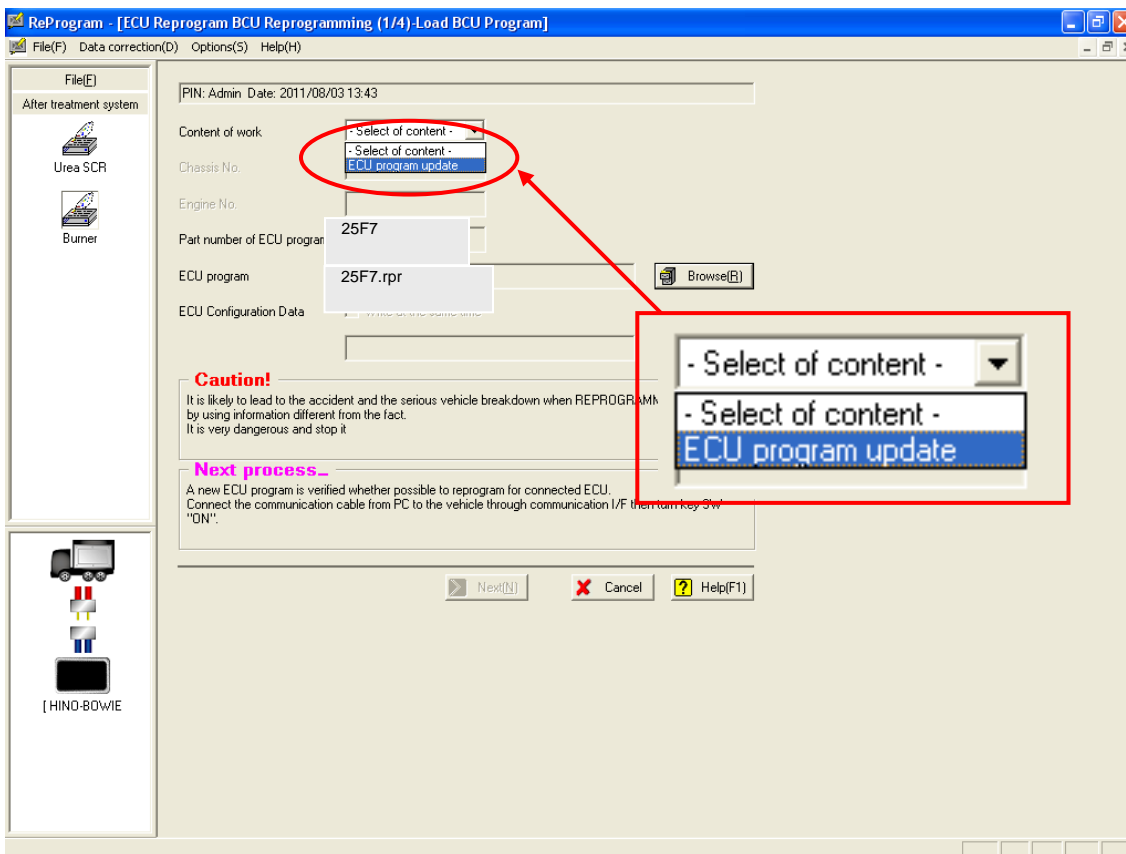
VOLUNTARY CAMPAIGN BULLETIN

- Once the “25F7.rpr” file has been selected from the desktop of your computer, the ECU program name should appear next to “ECU Program”.



VOLUNTARY CAMPAIGN BULLETIN

9. Select “ECU Program Update” from the drop down menu.

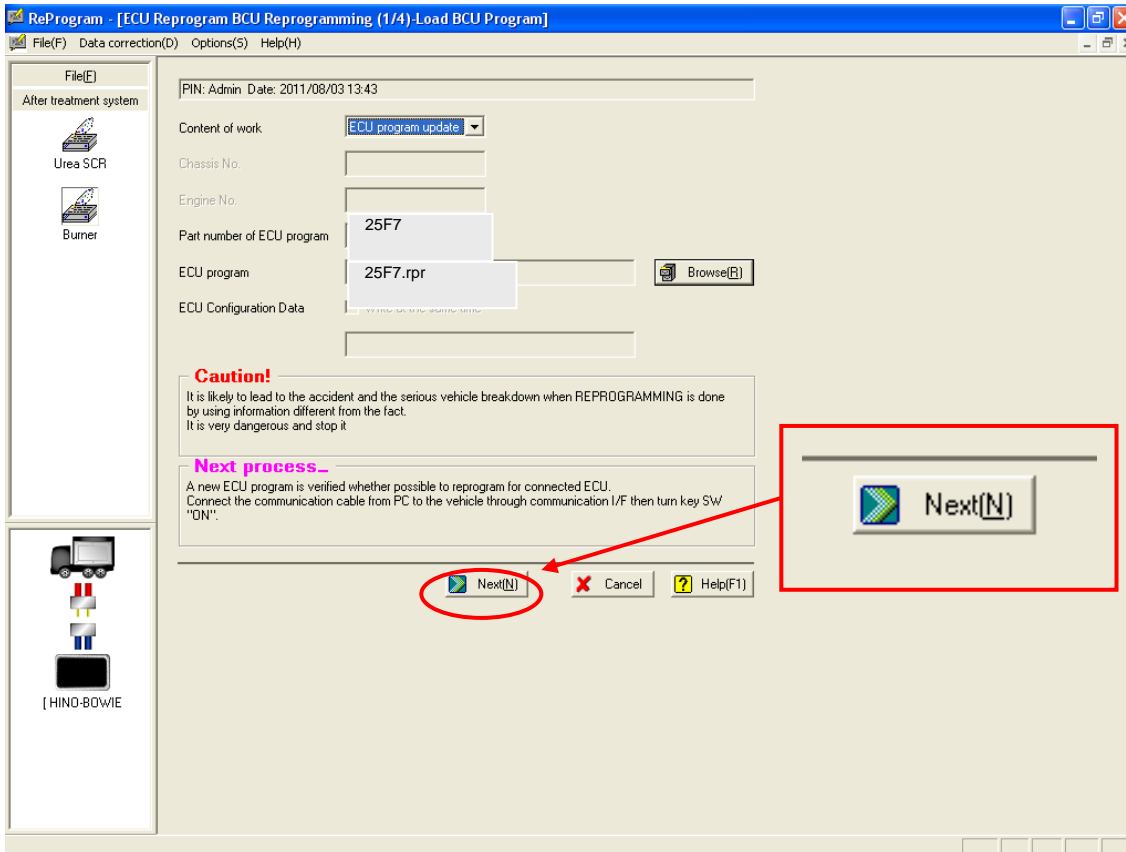


VOLUNTARY CAMPAIGN BULLETIN

10. Insert the starter key into the starter switch and turn the key to the “ON” position.

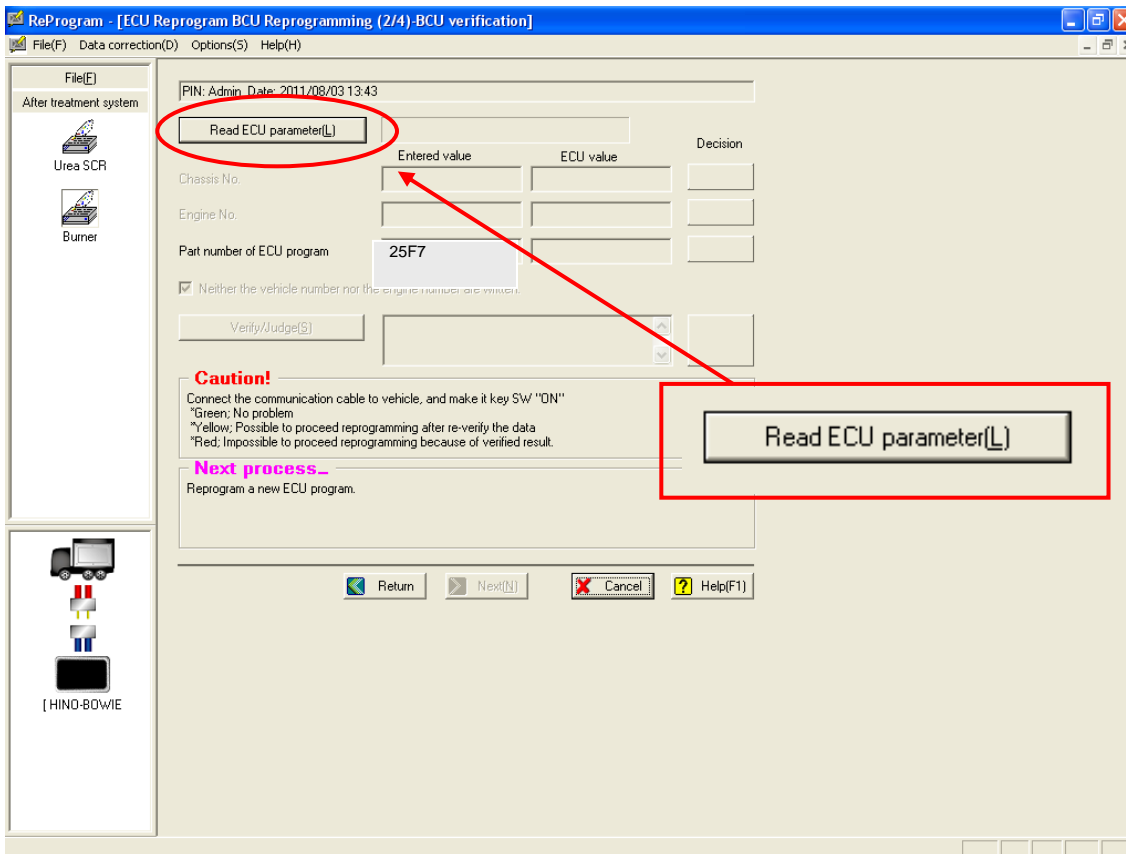


11. Select the “Next (N)” icon.



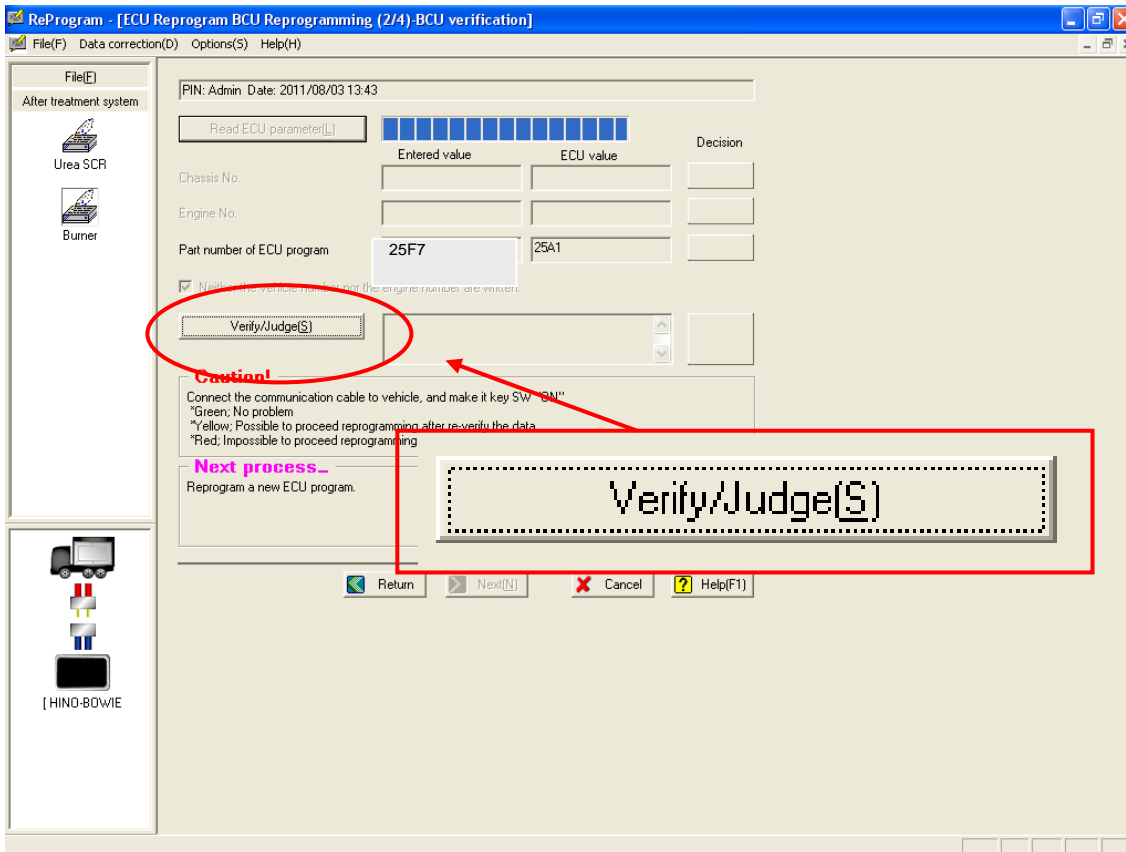
VOLUNTARY CAMPAIGN BULLETIN

12. Select the “Read ECU parameter (L)” icon.



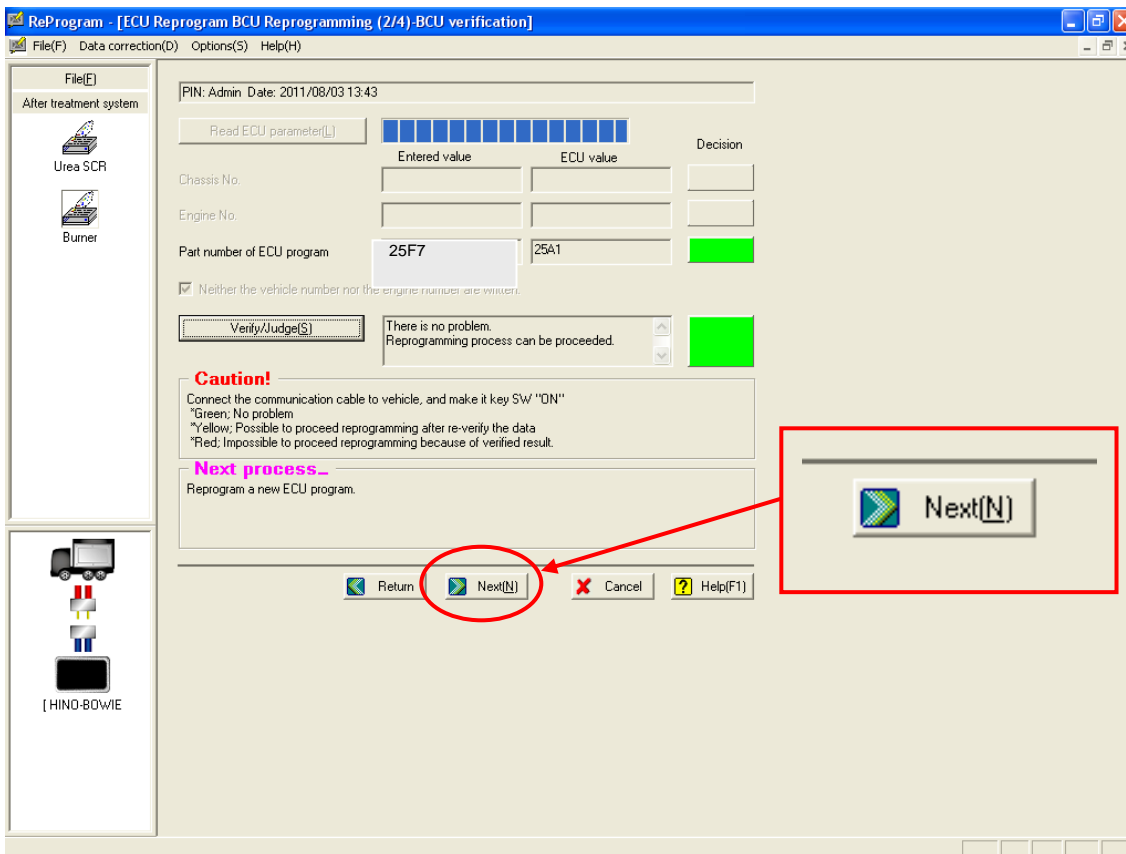
VOLUNTARY CAMPAIGN BULLETIN

13. Select the “Verify/Judge (S)” icon.



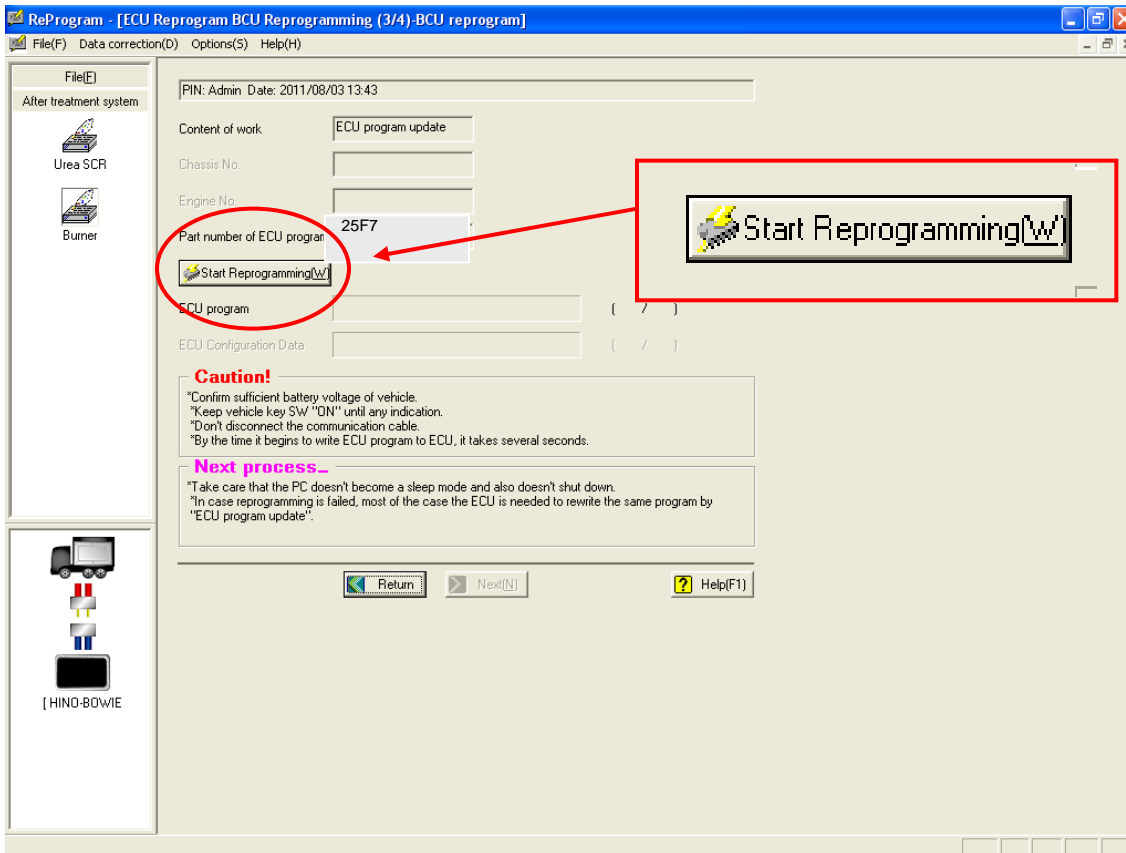
VOLUNTARY CAMPAIGN BULLETIN

14. Select the “Next (N)” icon.



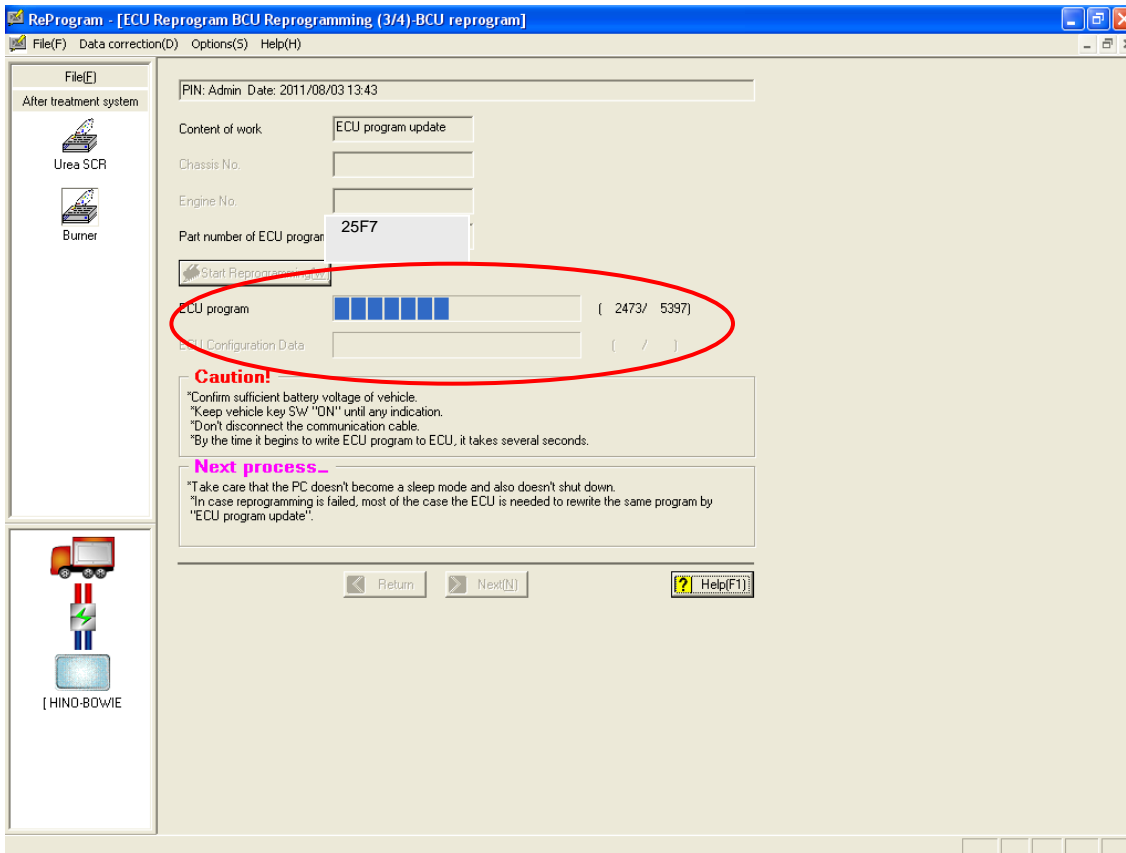
VOLUNTARY CAMPAIGN BULLETIN

15. Select the “Start Reprogramming (W)” icon.



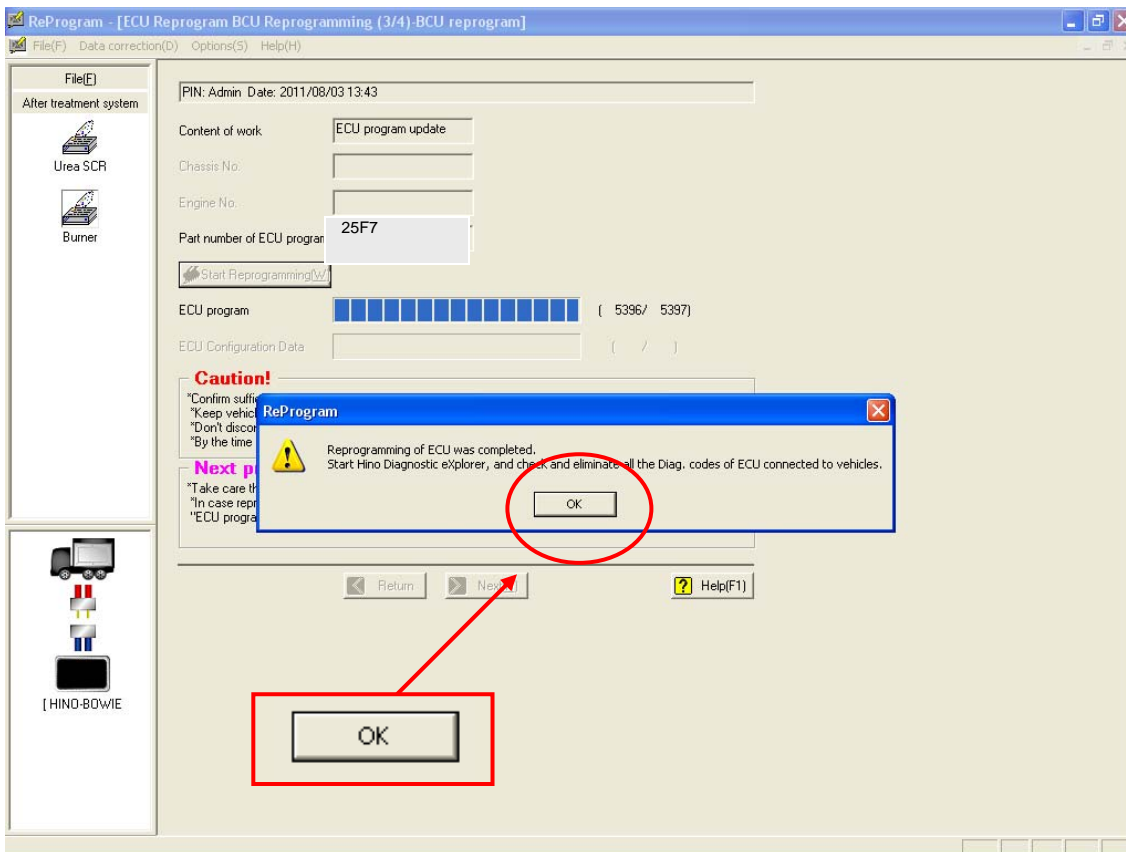
VOLUNTARY CAMPAIGN BULLETIN

16. The BCU programming will take approximately 3 minutes to complete.



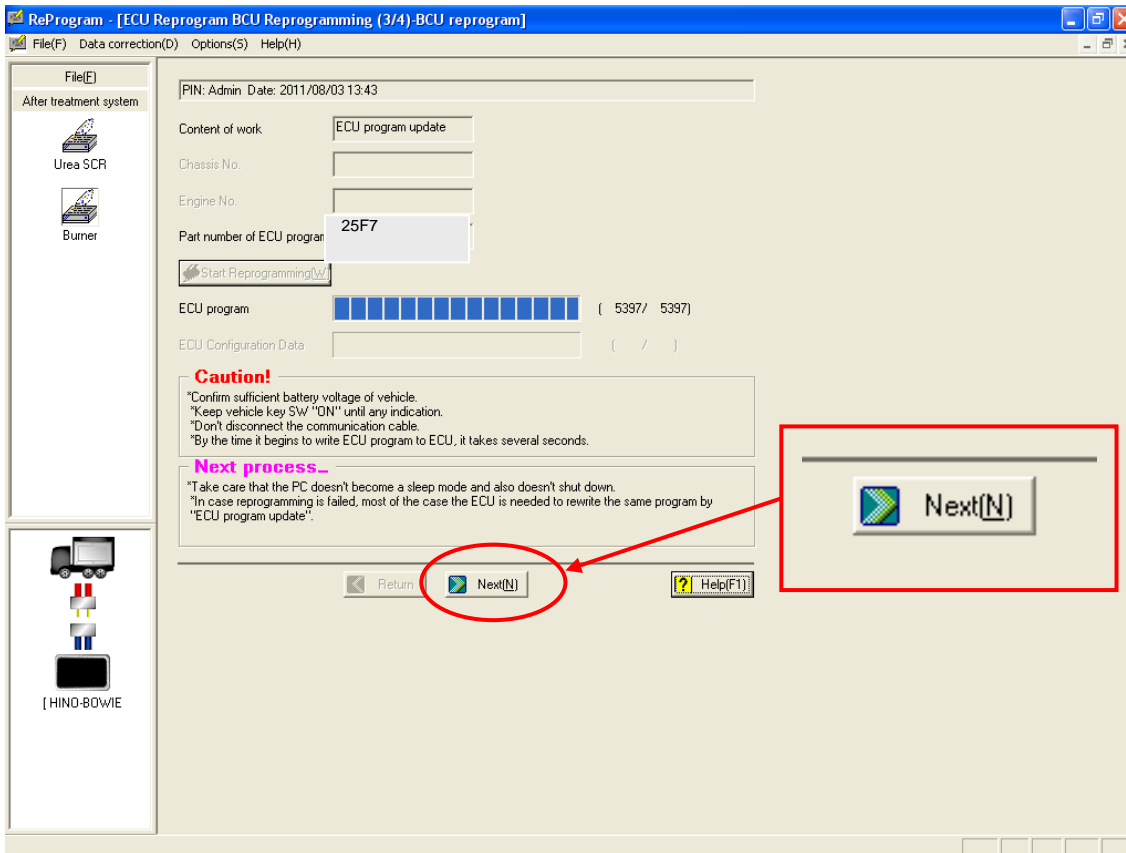
VOLUNTARY CAMPAIGN BULLETIN

17. Select the "OK" icon.



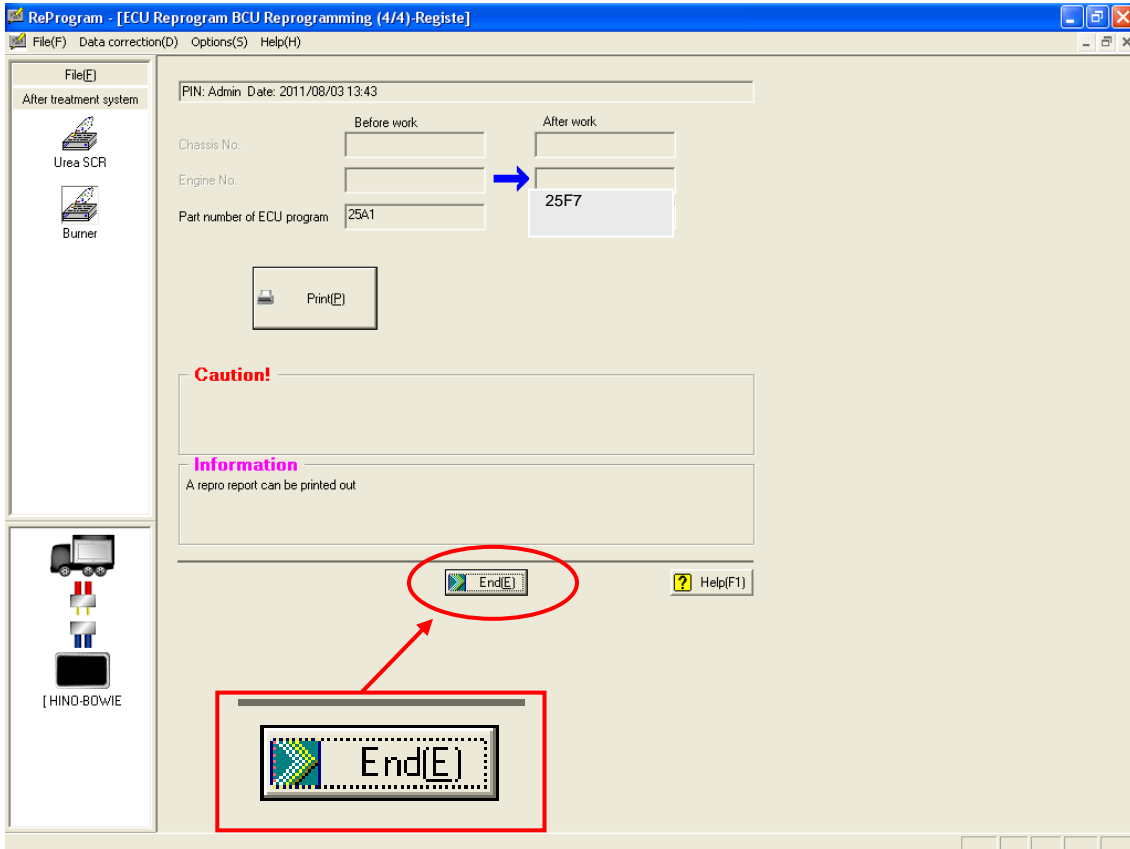
VOLUNTARY CAMPAIGN BULLETIN

18. Select the “Next (N)” icon.



VOLUNTARY CAMPAIGN BULLETIN

19. BCU reprogramming is complete. Select the “End (E)” icon.



VOLUNTARY CAMPAIGN BULLETIN

20. The “Hino Reprogram Manager” will return to its main menu and then it can be closed.



21. Turn the starter switch to the “LOCK” position and remove the key.



VOLUNTARY CAMPAIGN BULLETIN

22. Proceed to the final inspection section to complete this campaign procedure.

FINAL INSPECTION:

To complete this campaign procedure, review the campaign and confirm the following:

- When reprogramming the BCU, DTC's may have inadvertently been set. Using the "Hino Diagnostic Explore", insure all codes have been cleared from the Engine Control Unit (ECU), BCU, Dosing Control Unit (DCU), Meter Cluster and VCS prior to releasing the truck back to the customer.

CLAIM APPLICATION:

BCU Reprogramming:

- a) Campaign No: A8420
- b) Labor charge: .3 Hr.
- c) Warranty code: 8667798
- d) Operation code: 86650AOT
- e) Original failed part: 9999999999