



Technical Bulletin

SERVICE BULLETIN

Classification:

BR12-006

Reference:

NTB13-013

Date:

February 8, 2013

2013 ALTIMA SEDAN; DTC C1197 STORED

APPLIED VEHICLE: 2013 Altima Sedan (L33)

APPLIED VINs and

DATES: Vehicles built before: 1N4(*)L3A(* *)**DC** 214030 and February 1, 2013
 1N4**AL**3A(* *)**DN** 504676 and January 22, 2013
 1N4**BL**3A(* *)**DN** 507630 and January 24, 2013

IF YOU CONFIRM:

DTC C1197 is stored in the ABS actuator and electric unit (ABS control unit).

NOTE: The brake warning light may be on.

ACTION:

1. Refer to page 4, step 8 in the **SERVICE PROCEDURE** to confirm this bulletin pertains to an applied vehicle that you are working on.
2. If this bulletin applies, reprogram the ABS control unit.

CLAIMS INFORMATION

Submit a Primary Part (PP) type line claim using the following claims coding:

DESCRIPTION	PFP	OP CODE	SYM	DIA	FRT
Reprogram ABS control unit	(1)	PX68AA	HC	32	0.4

- (1) Reference the repair order and use the ABS control unit part number (47660-xxxxx) written down in page 4, step 8 of the service procedure.

IMPORTANT: The purpose of **ACTION** (above) is to give you a quick idea of the work you will be performing. You **MUST** closely follow the entire **SERVICE PROCEDURE** as it contains information that is essential to successfully completing this repair.

Nissan Bulletins are intended for use by qualified technicians, not 'do-it-yourselfers'. Qualified technicians are properly trained individuals who have the equipment, tools, safety instruction, and know-how to do a job properly and safely. **NOTE:** If you believe that a described condition may apply to a particular vehicle, **DO NOT** assume that it does. See your Nissan dealer to determine if this applies to your vehicle.

SERVICE PROCEDURE

Confirm ABS Control Unit Reprogramming Applies

NOTE: The following photos of C-III plus may differ slightly from those on your C-III plus screen.

1. Connect the CONSULT PC and the plus VI to the vehicle.
2. Turn the ignition switch ON.
3. From the CONSULT PC desktop, open C-III plus.
 - Verify the plus VI is recognized.
4. Select **Diagnosis (All Systems)**.

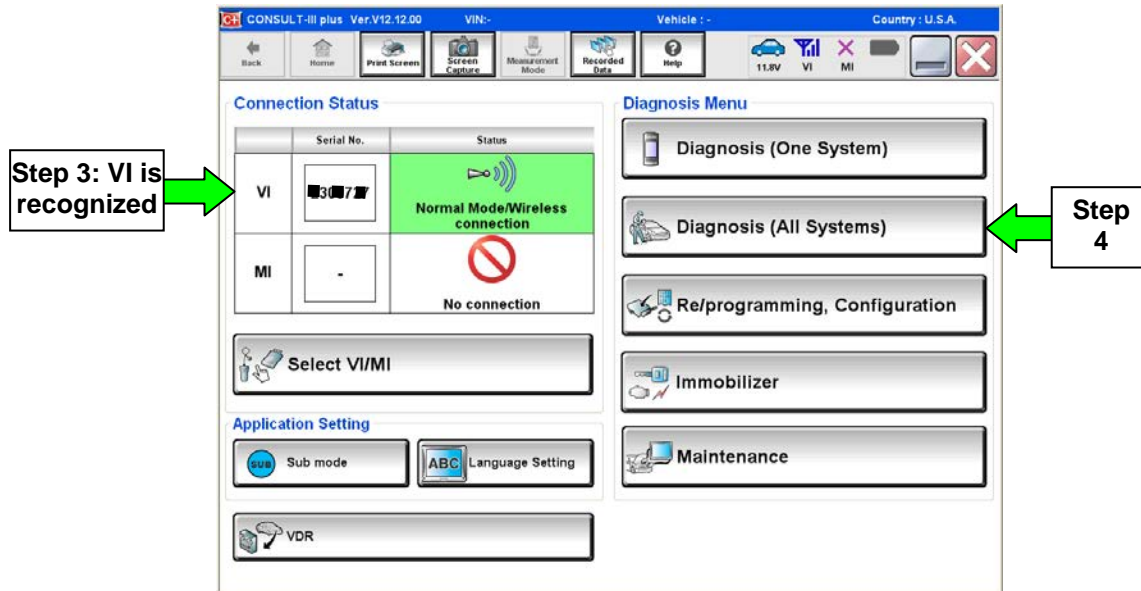


Figure 1

5. If the following screen appears, select the **Automatic Selection(VIN)** tab **OR** From the **Manual Selection(Vehicle Name)** tab, select **NISSAN**, Altima, Model Year (2013), and then **Select**.

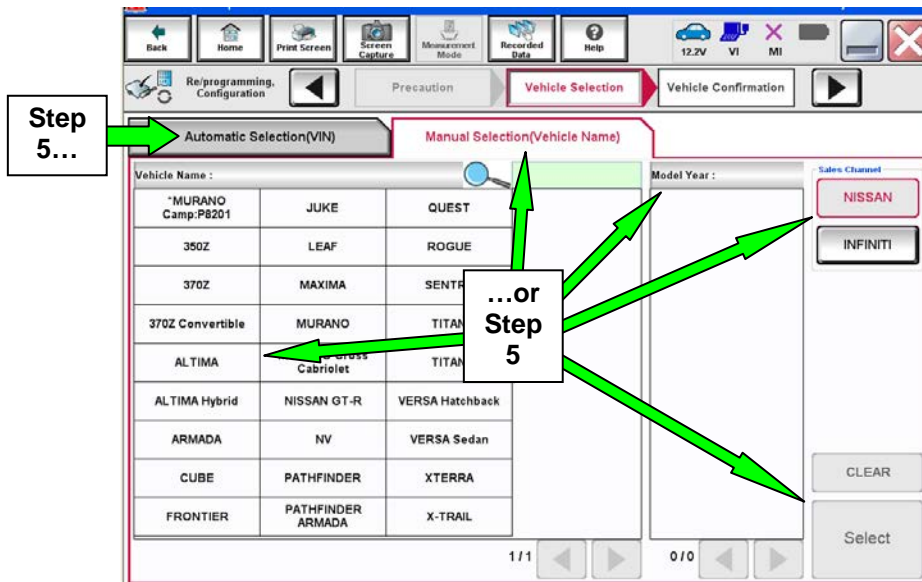


Figure 2

6. Verify information is correct, and then select **Confirm**.

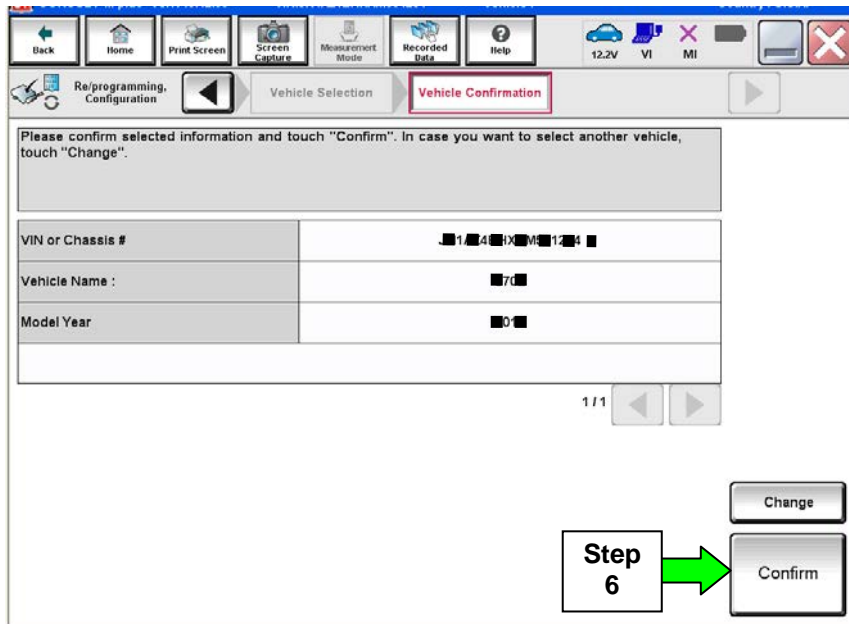


Figure 3

7. From the **All DTC** tab, verify there are no DTCs stored, and then select **ABS**.

- If there are any DTCs other than C1197, diagnose, perform repairs, and then erase DTCs **before** continuing. Refer to ASIST for further diagnosis.

NOTE: Any DTCs other than C1197 are not covered by this bulletin.

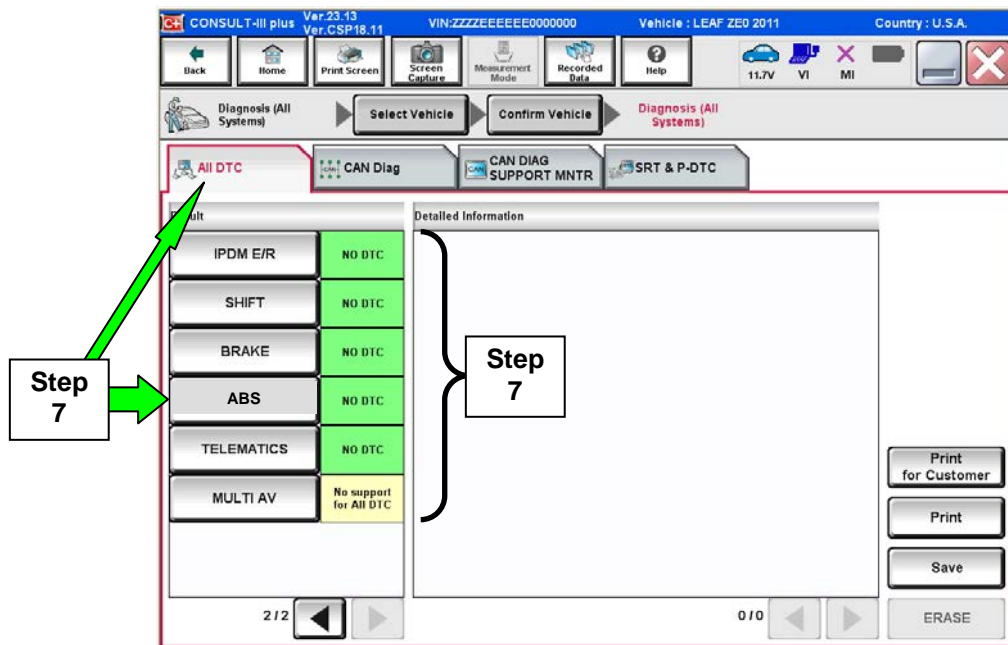


Figure 4

8. When you get to the screen shown in Figure 5, confirm this bulletin applies as follows:
- A. If the vehicle's VIN and production date were not already checked, check it now.
- If the vehicle was built **BEFORE** one of the VINs and dates below, continue to step 8B.

Vehicles built before: 1N4(*)L3A(* *)DC 214030 and February 1, 2013
 1N4AL3A(* *)DN 504676 and January 22, 2013
 1N4BL3A(* *)DN 507630 and January 24, 2013
 - If the vehicle was built **AFTER** one of the applied VINs and dates above, this bulletin does not apply. Return to ASIST for further diagnostic information.
- B. Find the ABS control unit **PART NUMBER** and write it on the repair order.
- NOTE:** This is the current ABS control unit Part Number (P/N).

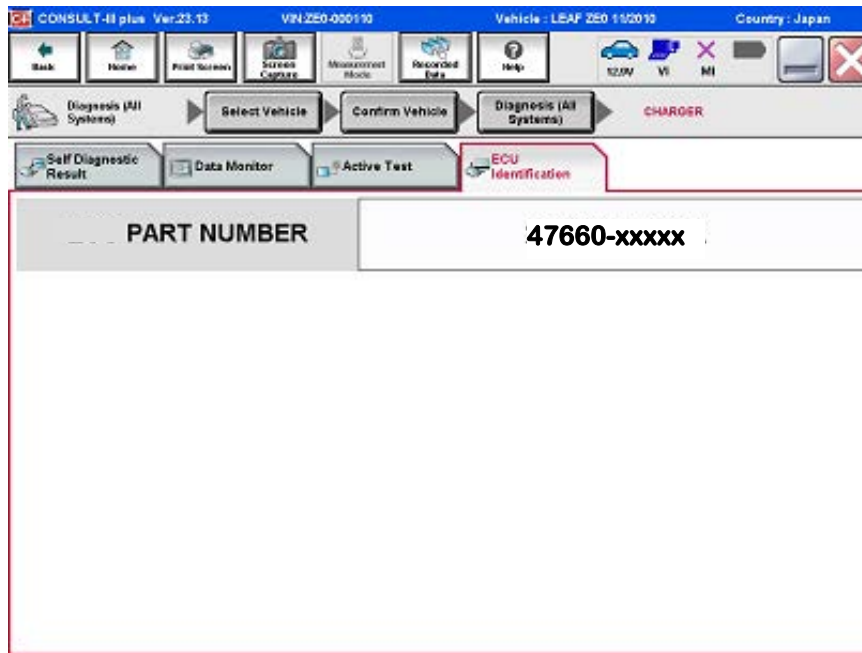


Figure 5

- C. Compare the P/N you wrote down to the numbers in the **Current ABS CU Part Number** column in **Table A** below.
- If there is a match, this bulletin applies. Continue with the reprogramming procedure on the next page.
 - If there is not a match, reprogramming does not apply. Return to ASIST for further diagnostic information.

Table A

Model	Current ABS CU Part Number: 47660 -
2013 Altima Sedan	3TA2A, 3TA3A, 3TA4A, 3TA5A, 3TA7A, 3TA8A
	3TA1C

Reprogram ABS Control Unit

IMPORTANT: Before starting, make sure:

- **ASIST on the CONSULT PC has been freshly synchronized (updated).**
- **All C-III plus software updates (if any) have been installed.**

NOTE: The CONSULT PC automatically gets applicable reprogramming data during ASIST synchronization.

- A screen print for Warranty documentation can be done from the CONSULT PC during this process while still connected to the vehicle.
- **No DTCs stored.**
 - Use C-III plus to perform Self Diagnosis for all systems.
 - See page 3, step 7.
 - If there are any DTCs other than C1197, diagnose, perform repairs, and then erase DTCs **before** continuing. Refer to ASIST for further diagnosis.

NOTE: Any DTCs other than C1197 are not covered by this bulletin.

1. If disconnected, reconnect the CONSULT PC and plus VI to the vehicle.
 - Make sure to use the correct VI for C-III plus (plus VI).

CAUTION: Make sure the plus VI is securely connected. If the plus VI connection is loose during reprogramming, the process will be interrupted and the **ABS control unit may be damaged.**

2. Connect the AC Adapter to the CONSULT PC.

CAUTION: Be sure to connect the AC Adapter. If the CONSULT PC battery voltage drops during reprogramming, the process will be interrupted and the **ABS control unit may be damaged.**

3. Connect a battery charger to the vehicle battery:

- Set the battery charger at a low charge rate.

NOTE: The GR-8 (Battery and Electrical Diagnostic Station) set to “Power Supply” mode is recommended.

CAUTION: Be sure the battery charger is connected securely to the battery. Make sure the battery voltage stays between 12.0V and 15.5V during reprogramming. If the battery voltage goes out of this range during reprogramming, the **ABS control unit may be damaged.**

4. Turn off all external Bluetooth[®] devices (e.g., cell phones, printers, etc.) within range of the CONSULT PC and the VI.

CAUTION: Make sure to turn off all external Bluetooth[®] devices. If Bluetooth[®] signal waves are within range of the CONSULT PC and the plus VI during reprogramming, reprogramming may be interrupted and the **ABS control unit may be damaged.**

5. Turn OFF all vehicle electrical loads such as exterior lights, interior lights, HVAC, blower, rear defogger, audio, NAVI, seat heater, steering wheel heater, etc.

IMPORTANT: Make sure to turn OFF all vehicle electrical loads. Make sure the battery voltage stays between 12.0V and 15.5V during reprogramming. If the battery voltage goes out of this range during reprogramming, the **ABS control unit may be damaged.**

6. From the CONSULT PC desktop, open C-III plus.

7. Wait for the plus VI to be recognized / connected.

- Serial number will display when the plus VI is recognized / connected.

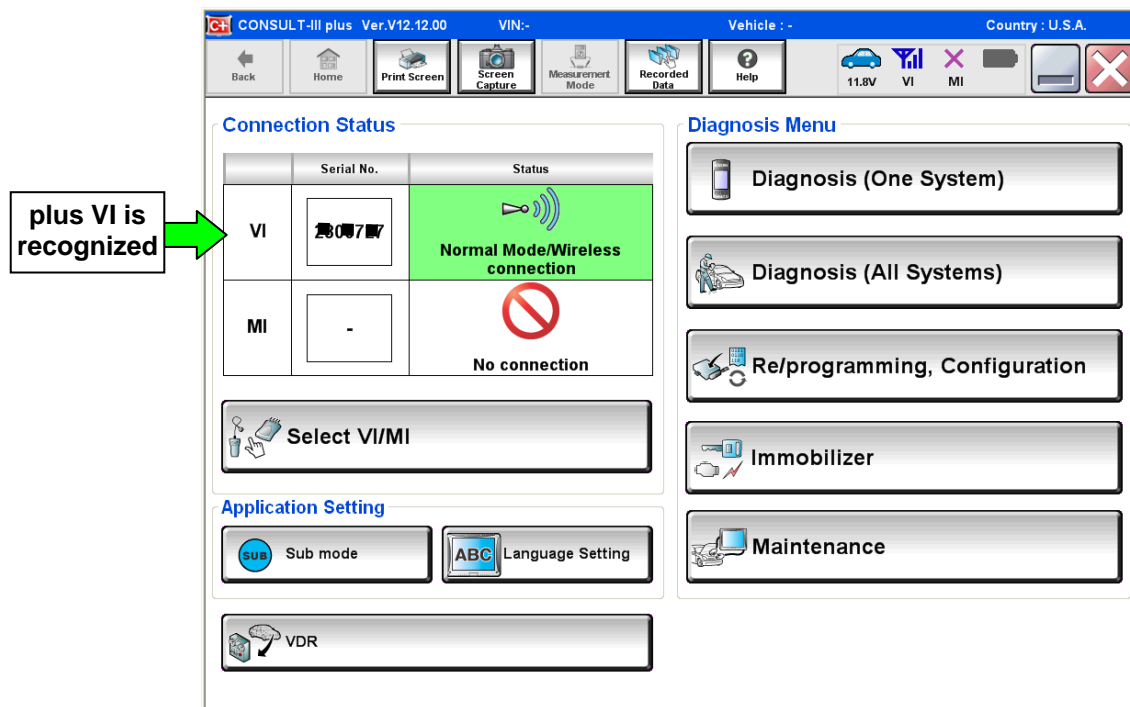


Figure 1a

8. Select **Re/programming, Configuration**.

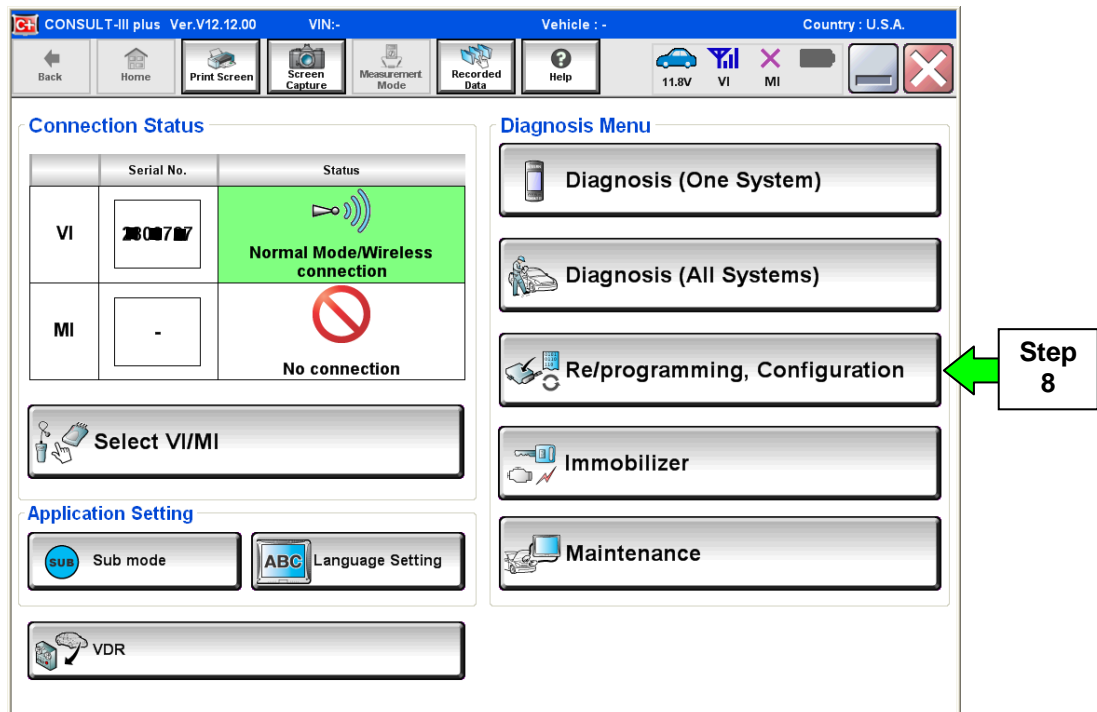


Figure 2a

- 9. Use arrows (if needed) to view and read all precautions.
- 10. Check the box confirming the precautions have been read.
- 11. Select **Next**.

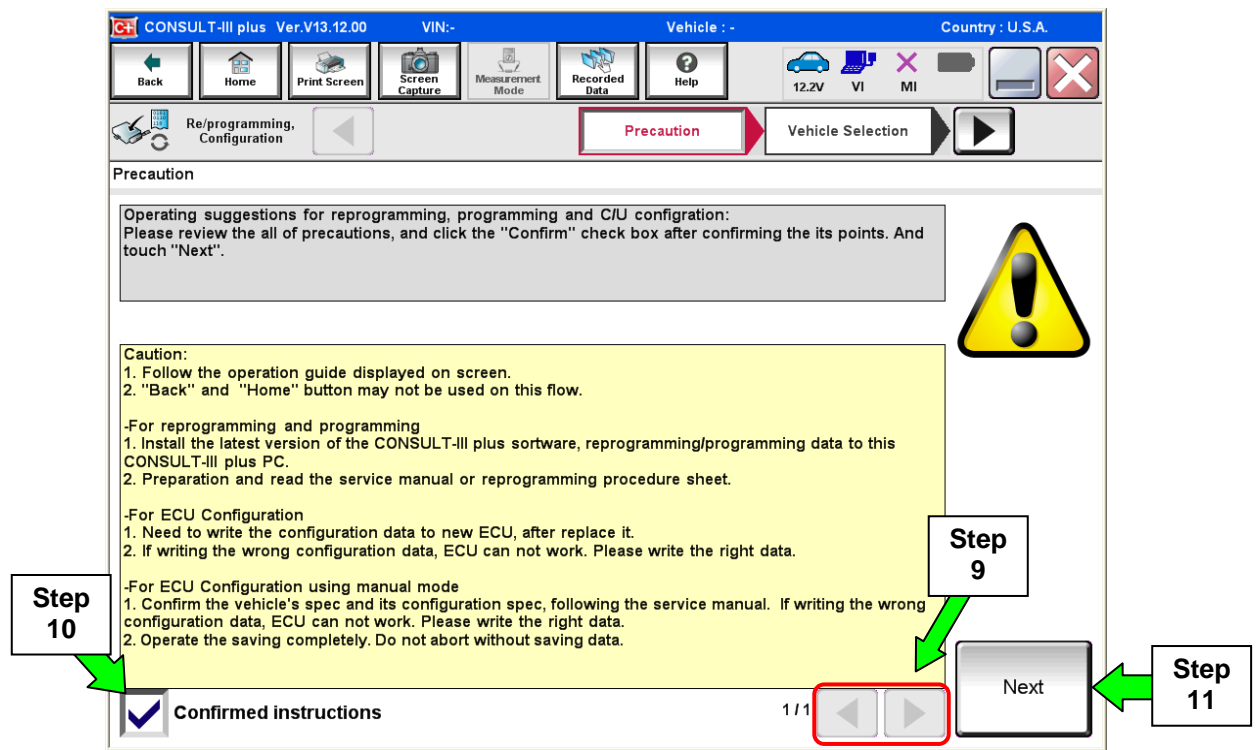


Figure 3a

- 12. If the following screen appears, select the **Automatic Selection(VIN)** tab
OR
 From the **Manual Selection(Vehicle Name)** tab, select **NISSAN**, Altima, Model Year (2013), and then **Select**.

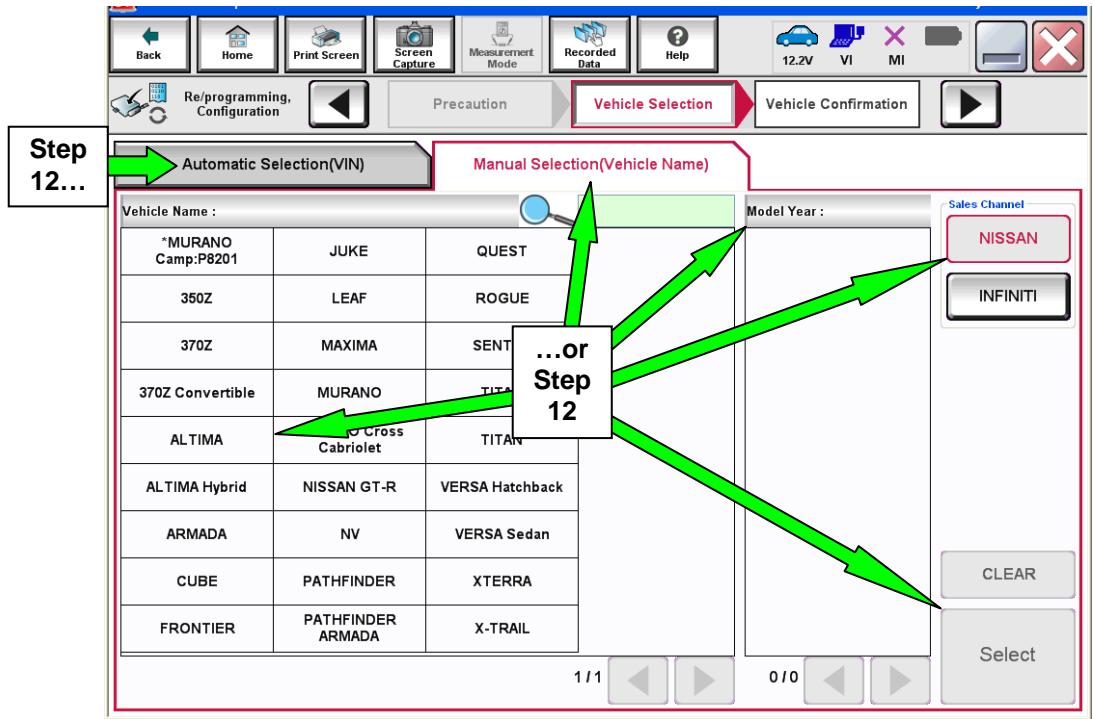


Figure 4a

13. Make sure **VIN or Chassis #** matches the vehicle's VIN.

14. If the correct VIN is displayed, select **Confirm**.

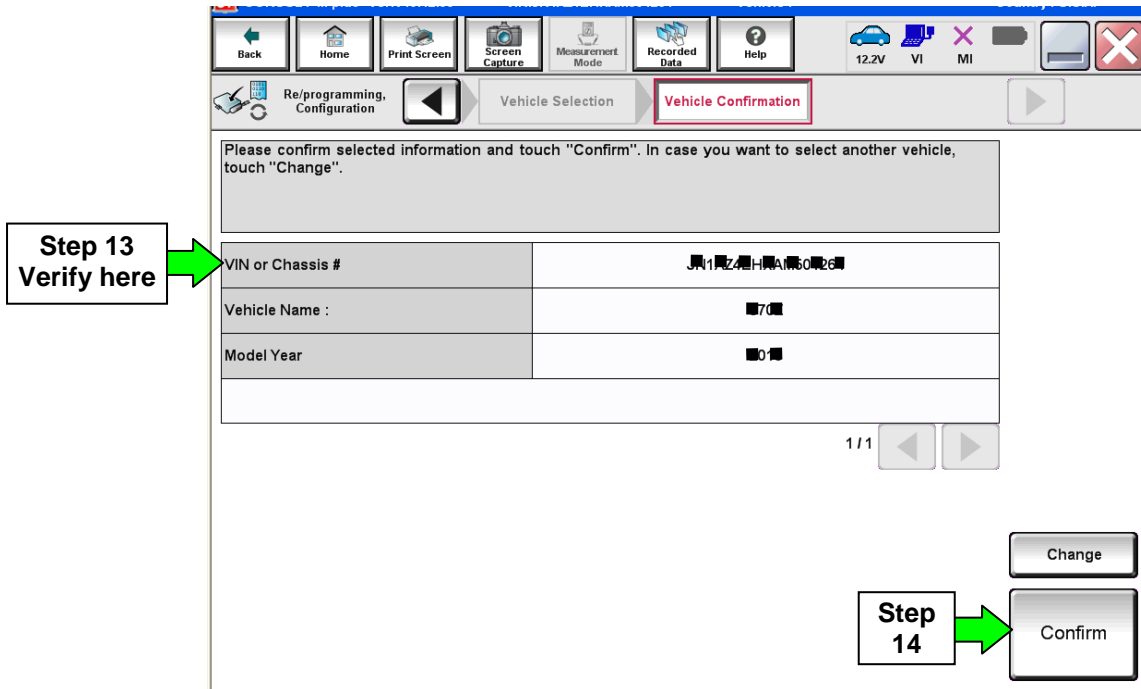


Figure 5a

IMPORTANT:

If the screen in Figure 6a displays, select **Other Operation**, and then go to step 15.

- If this screen does not display, go to step 15.

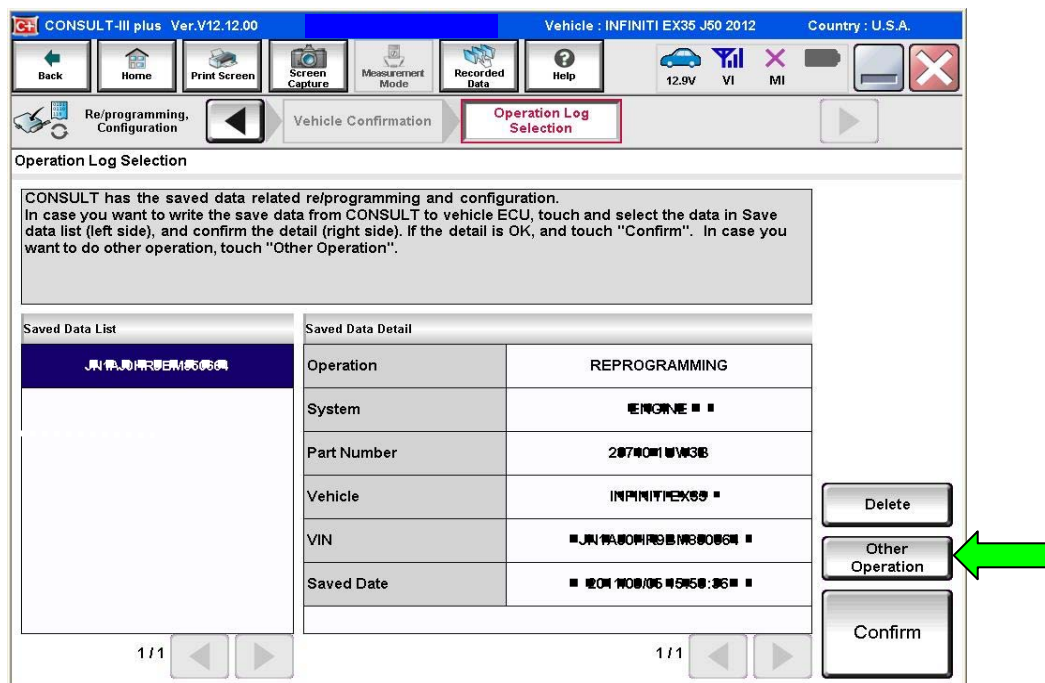


Figure 6a

15. Select **Confirm**.

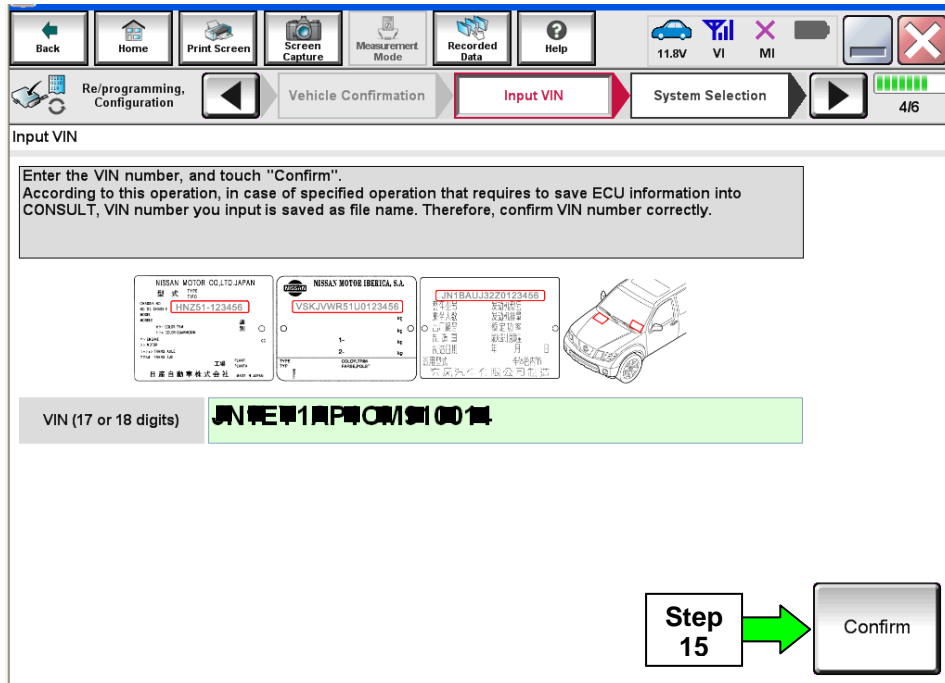


Figure 7a

16. Select **ABS**.

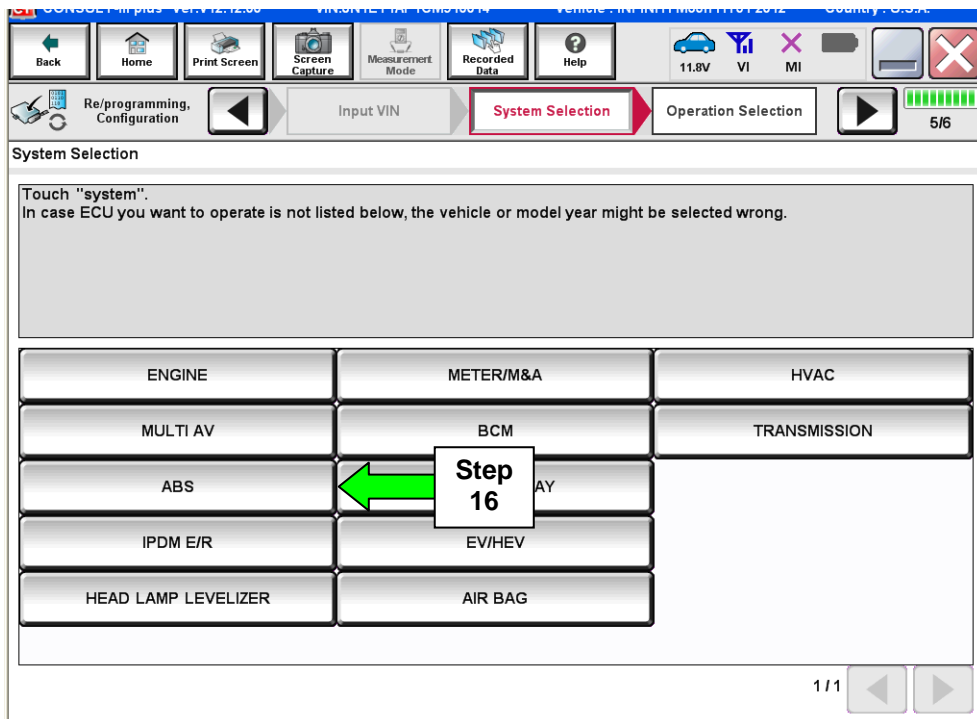


Figure 8a

17. Select Reprogramming.

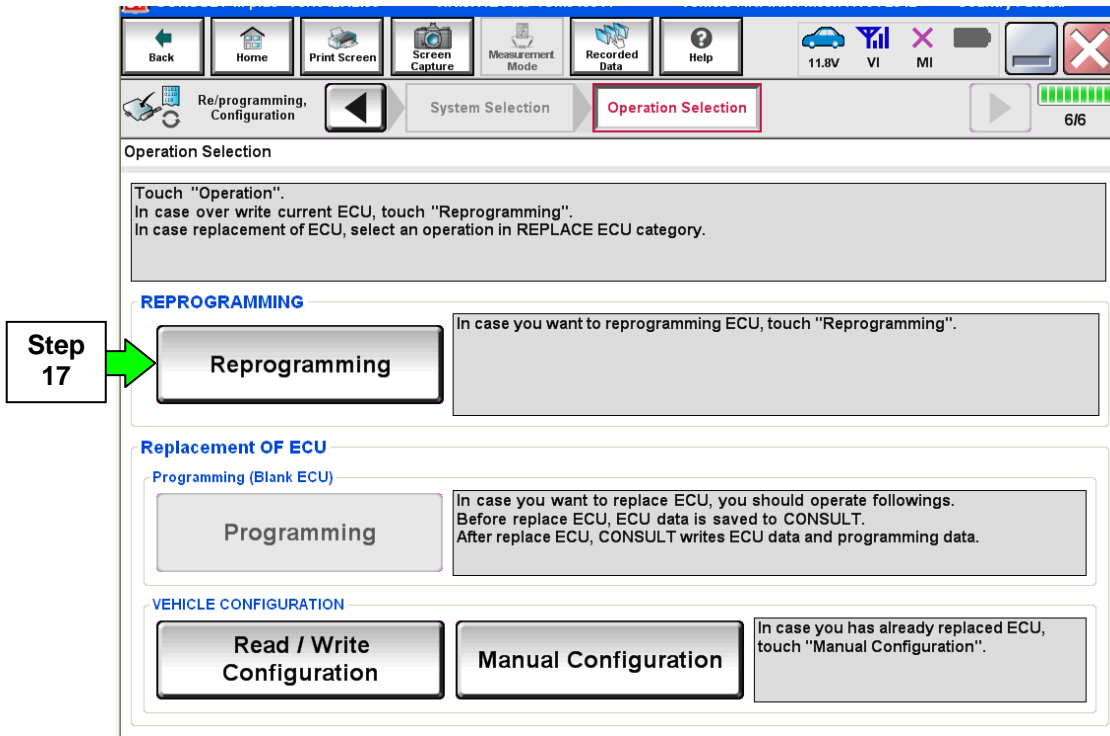


Figure 9a

18. Select Save.

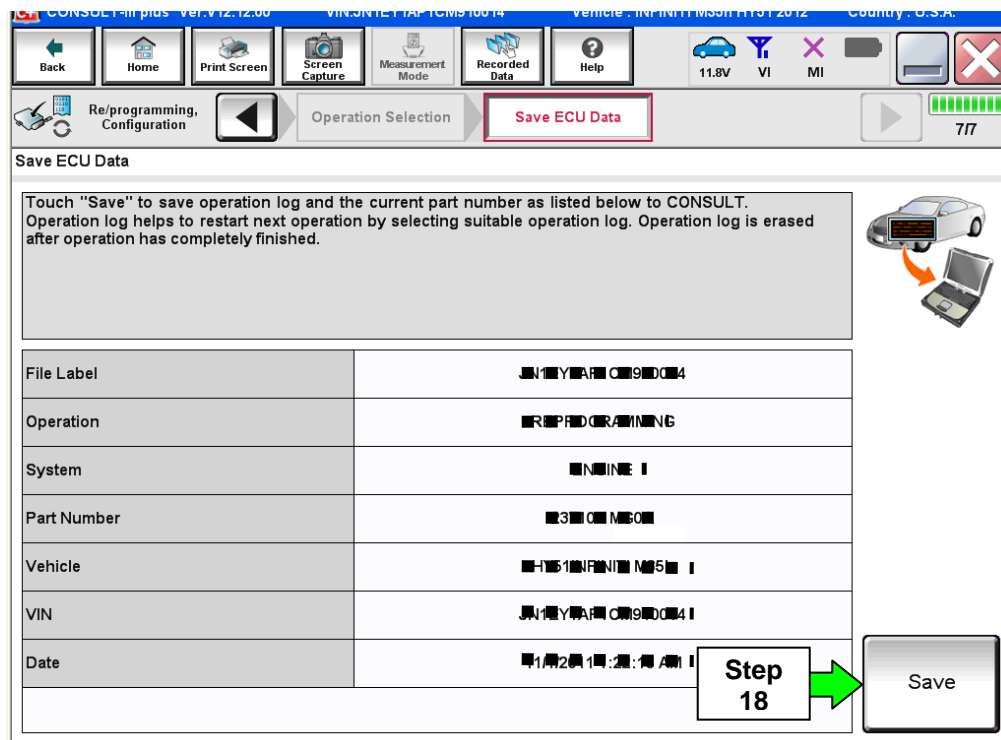


Figure 10a

19. Select **Next**.

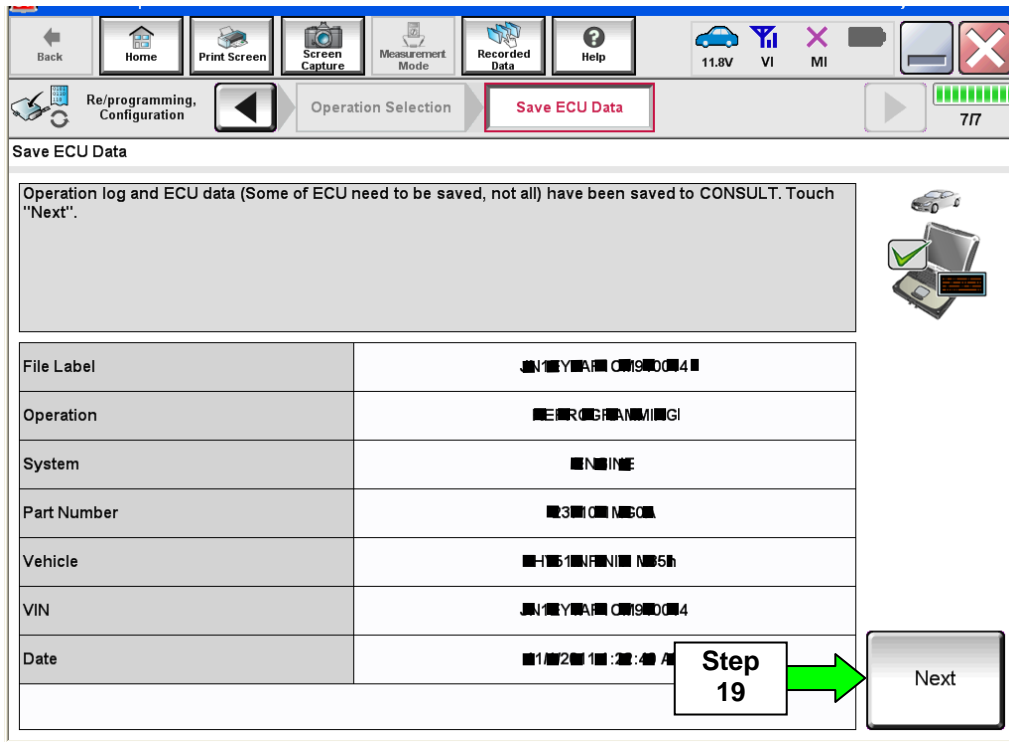


Figure 11a

20. Use arrows (if needed) to view and read all precautions.

21. Check the box confirming the precautions have been read.

22. Select **Next**.

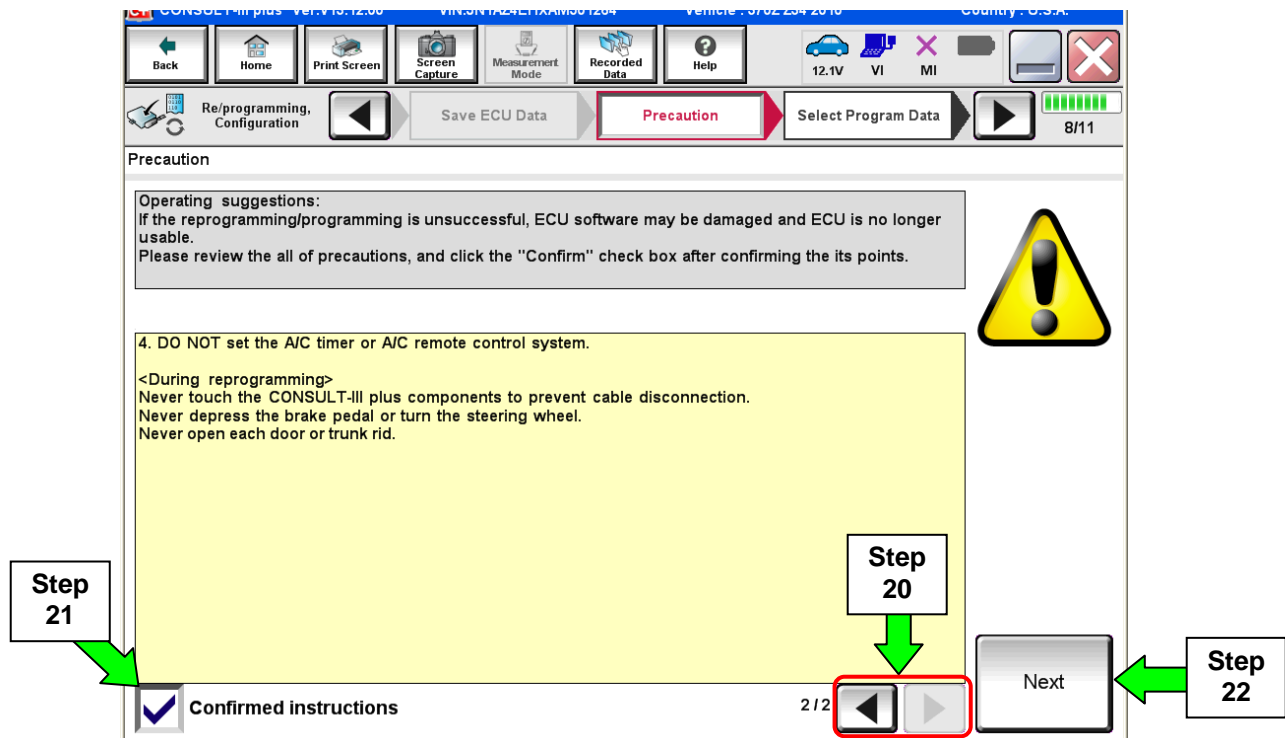


Figure 12a

23. Read the **Current Part Number** and **Part Number After Reprogramming**. They should be different.

24. Select **Next**.

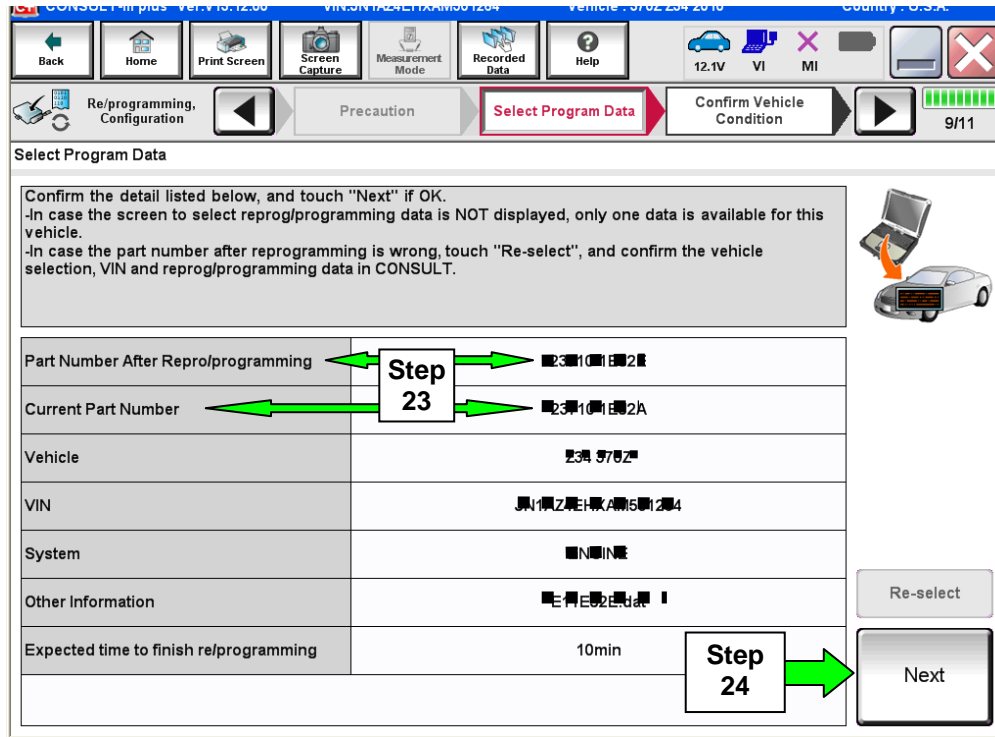


Figure 13a

NOTE:

- In some cases, more than one new part number for reprogramming is available.
 - a. In this case, the screen in Figure 14a displays.
 - b. Select and use the reprogramming option that **does not** have the message “Caution! Use ONLY with NTBXX-XXX”.
- If you get this screen and it is blank (no reprogramming listed), it means there is no ABS control unit reprogramming available for this vehicle.

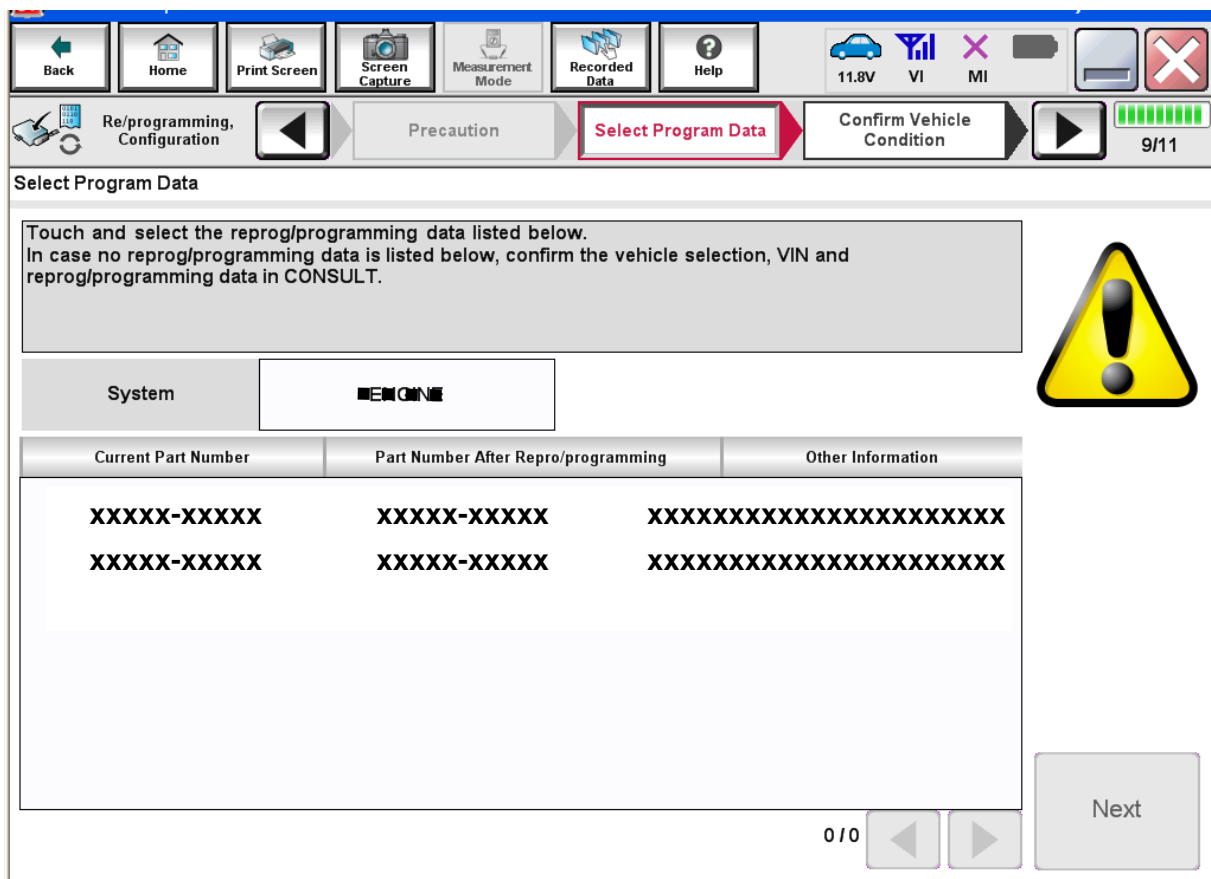


Figure 14a

25. Make sure **OK** is highlighted **green** (battery voltage must be between **12.0 and 15.5 Volts**).

26. Select **Next**.

IMPORTANT: Battery voltage must stay between **12.0 and 15.5 Volts** during reprogramming or ECM reprogramming may be interrupted and ECM may be damaged.

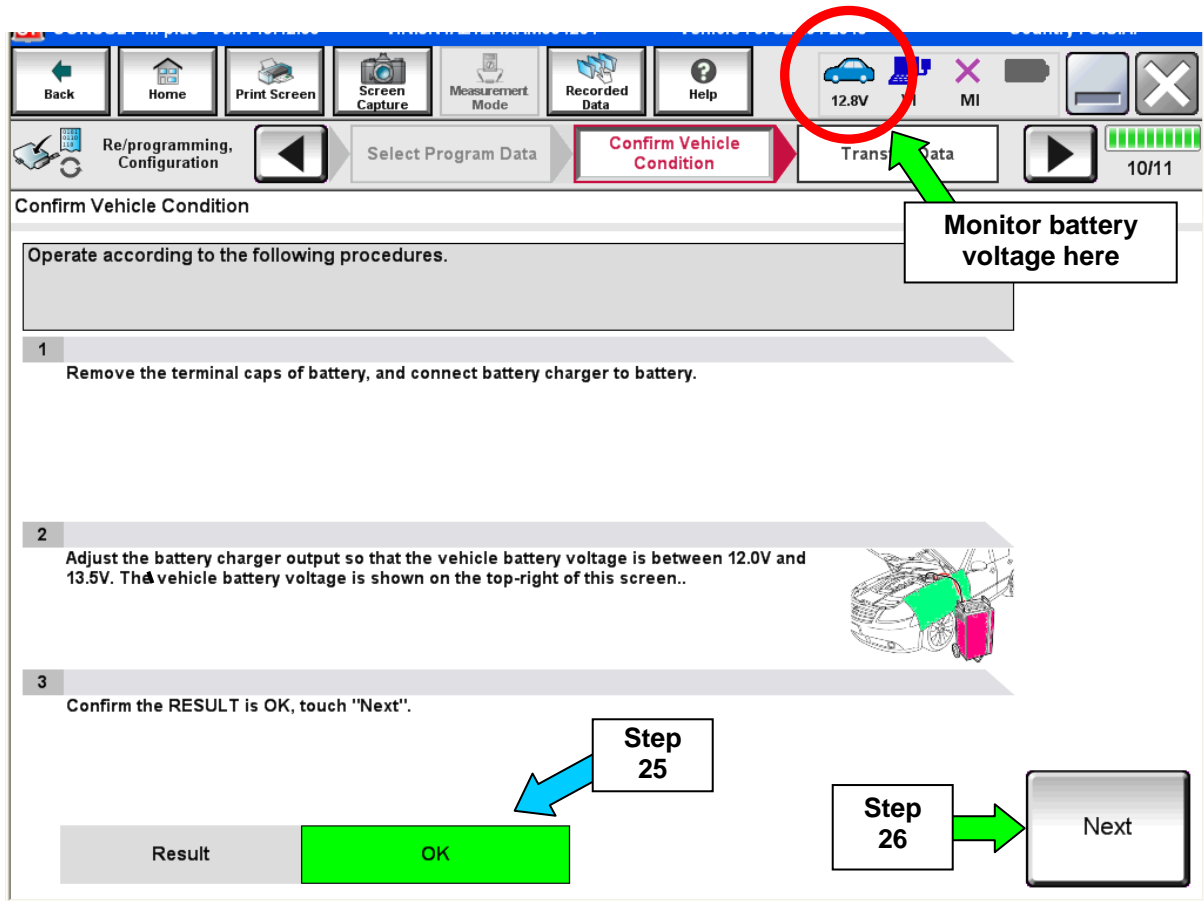


Figure 15a

NOTE: In the next step, the reprogramming process will begin when **Start** is selected.

27. Select **Start**.

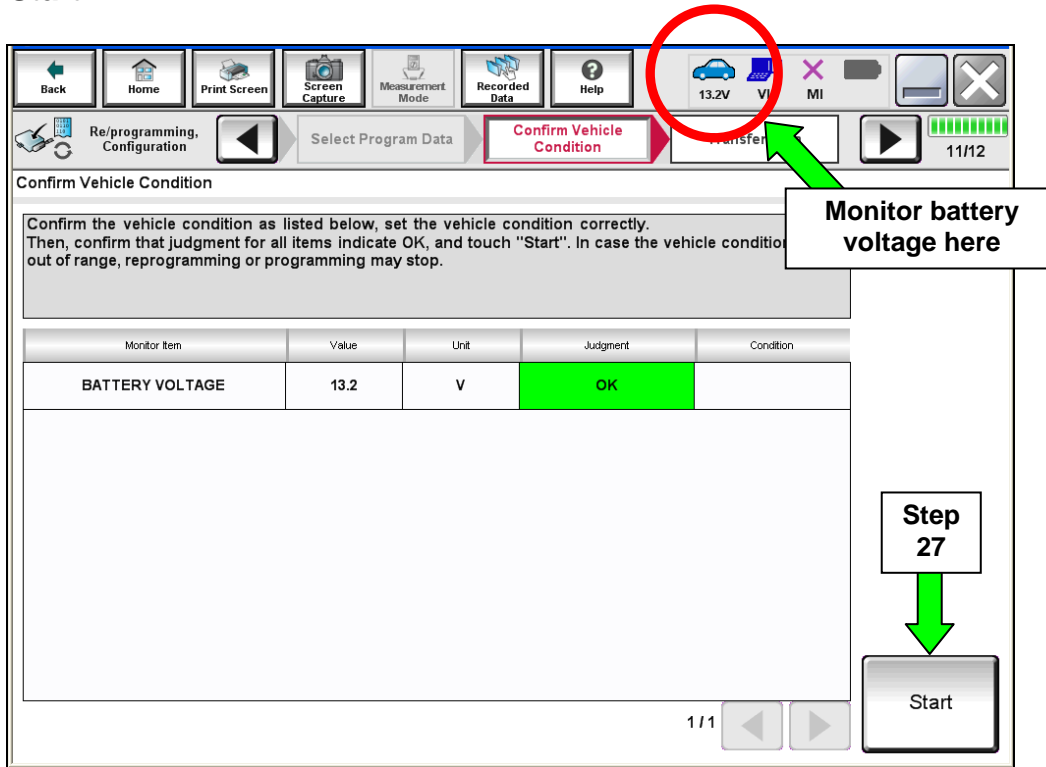


Figure 16a

28. Wait for both progress bars to complete.

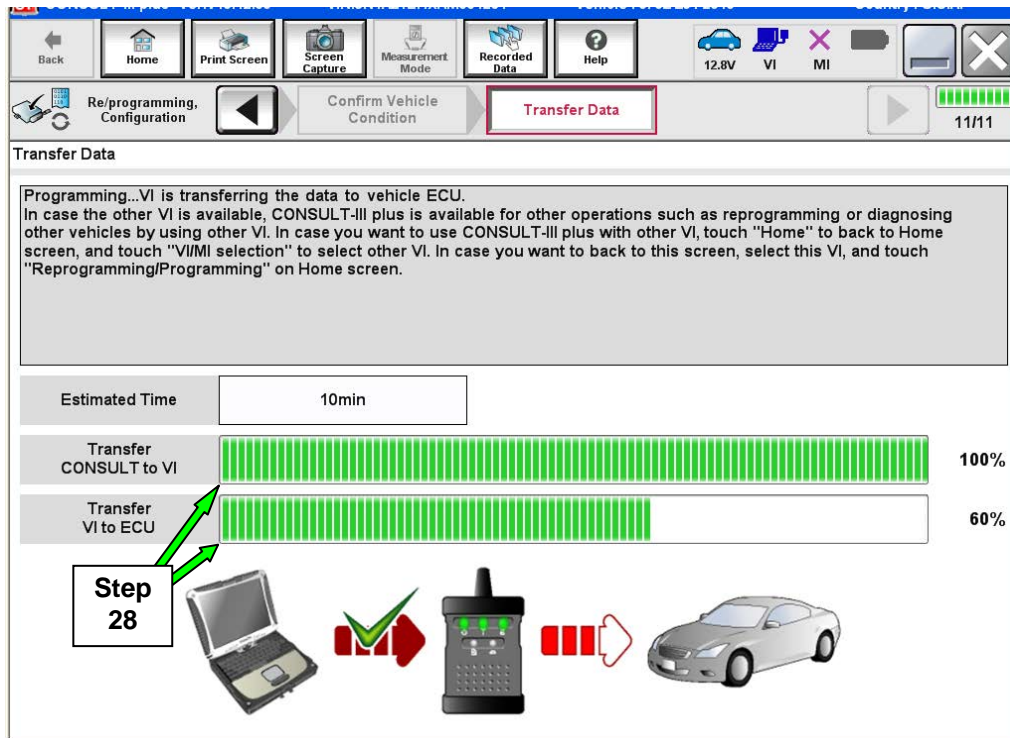


Figure 17a

NOTE: If the message shown in Figure 18a appears, there is data stored in the plus VI. Select “Yes” to proceed with reprogramming.

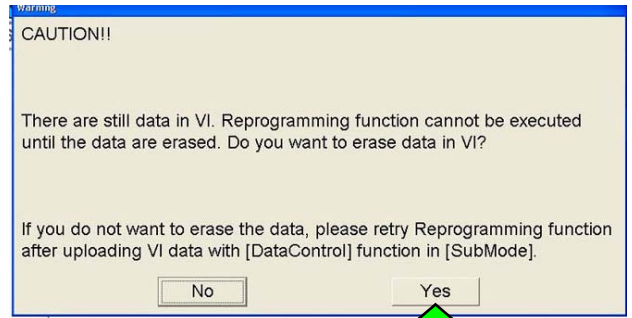


Figure 18a

29. When the screen in Figure 19a displays, reprogramming is complete.

NOTE: If the screen in Figure 19a does not display (reprogramming does not complete), refer to the information on the next page.

30. Disconnect the battery charger from the vehicle.

31. Select **Next**.

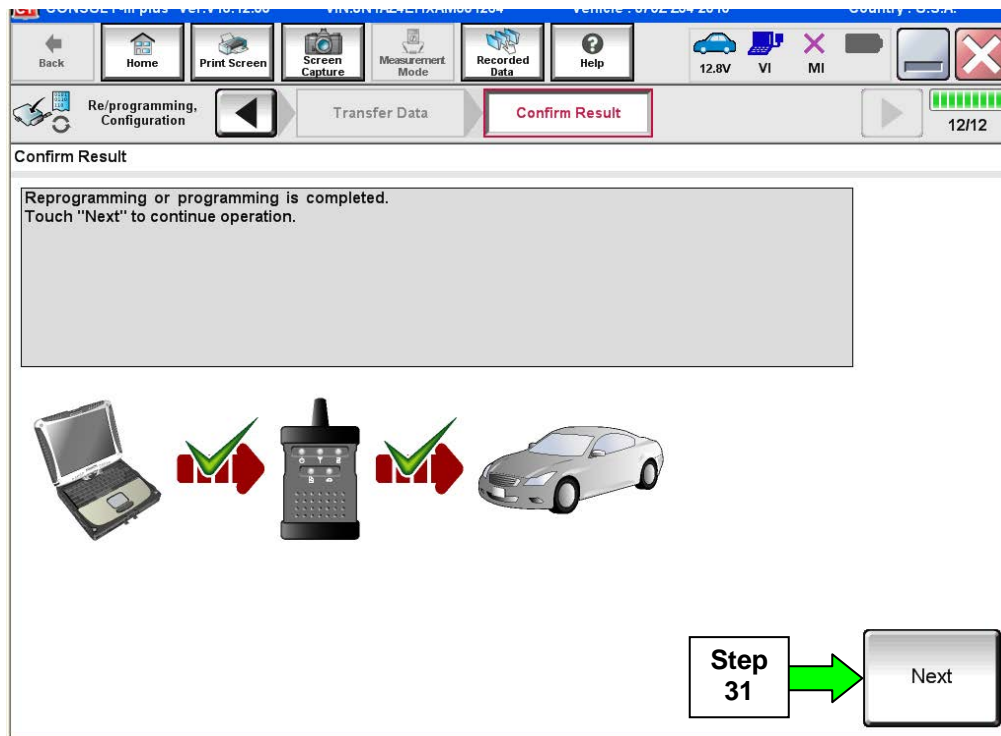


Figure 19a

If reprogramming does not complete and the “!?” symbol displays as shown in Figure 20a:

- Check battery voltage (12.0 – 15.5V).
- Ignition is ON, Ready Mode is OFF.
- External Bluetooth® devices are OFF.
- All electrical loads are OFF.
- **Select Retry and follow the on screen instructions.**

NOTE: Retry may not go through on first attempt and can be selected more than once.

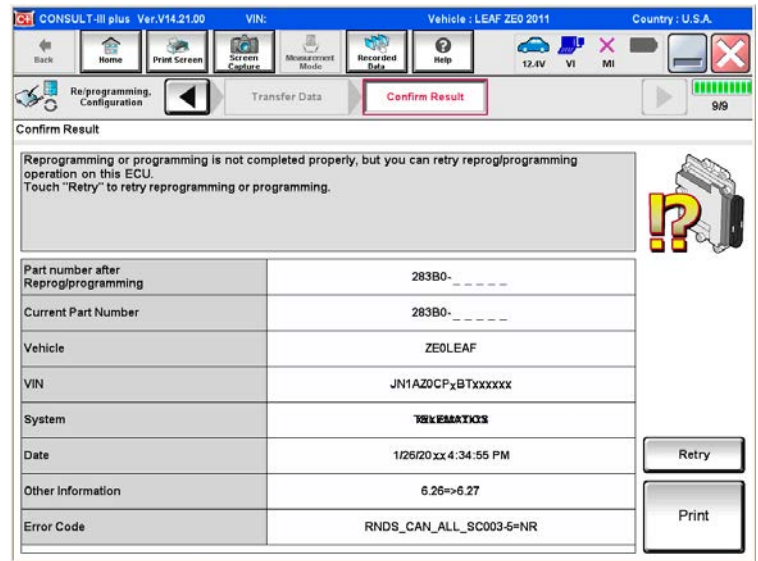


Figure 20a

If reprogramming does not complete and the “X” symbol displays as shown in Figure 21a:

- **Do not disconnect the plus VI or shut down C-III plus if reprogramming does not complete.**
- Check battery voltage (12.0 – 15.5V).
- CONSULT A/C adapter is plugged in.
- Ignition is ON, Ready Mode is OFF.
- Transmission in Park.
- All C-III plus / plus VI cables are securely connected.
- All C-III plus updates are installed.
- **Select Home, and then restart the reprogram procedure from the beginning.**

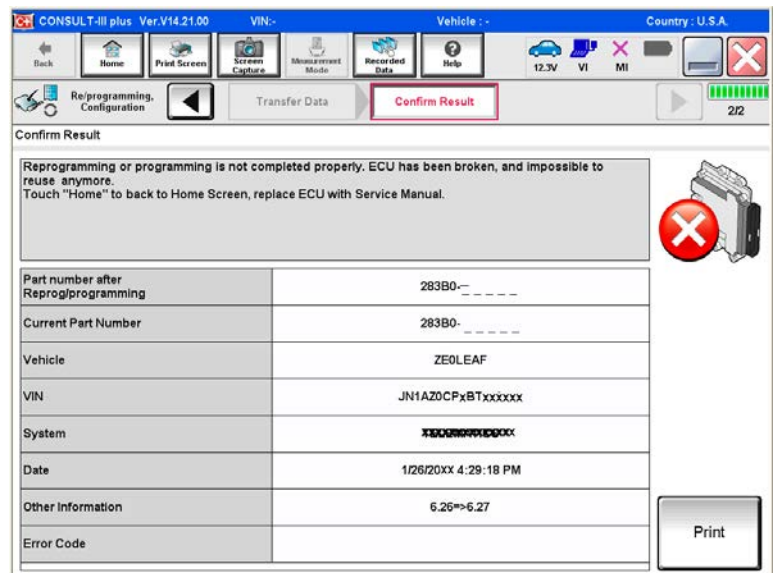


Figure 21a

If the screen in Figure 22a displays, select **Home**, and then select **Trouble Diagnosis**.

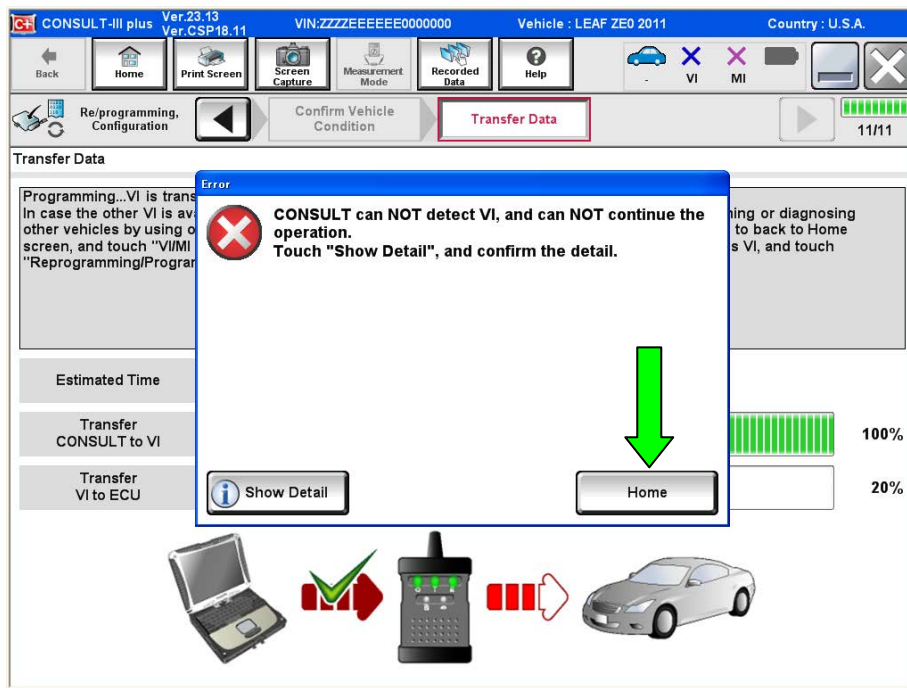


Figure 22a

32. Erase all DTCs as follows:

- a. Turn the ignition OFF.
- b. Turn the Ignition ON.
- c. Wait for DTC erase to complete.

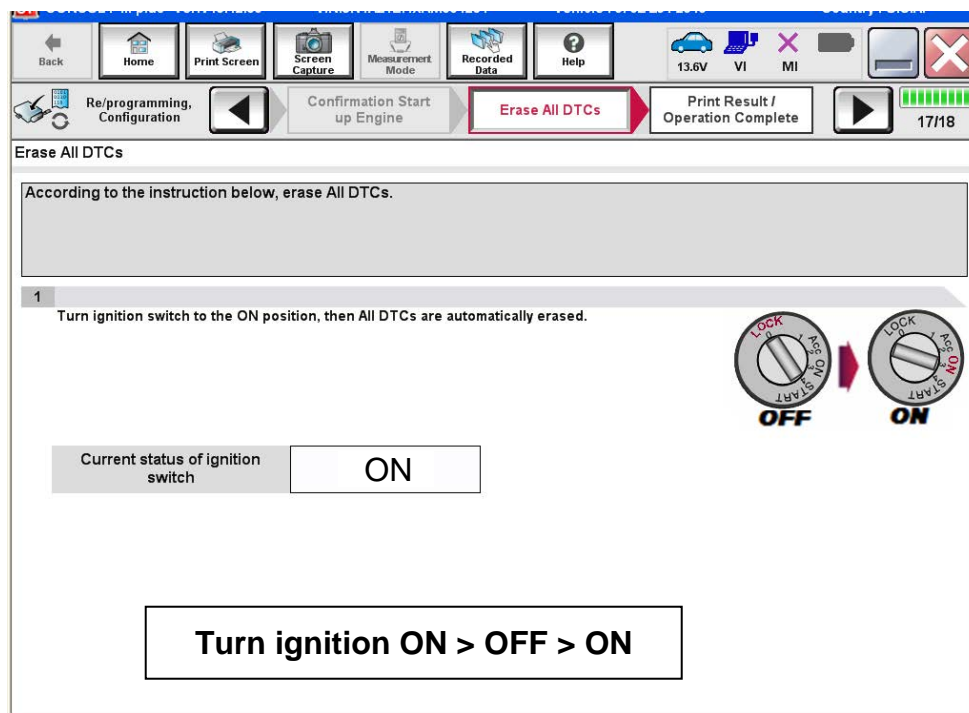


Figure 23a

33. Verify the before and after part numbers are different.

34. Print a copy of this screen (Figure 24a) and attach it to the repair order.

35. Select **Confirm**.

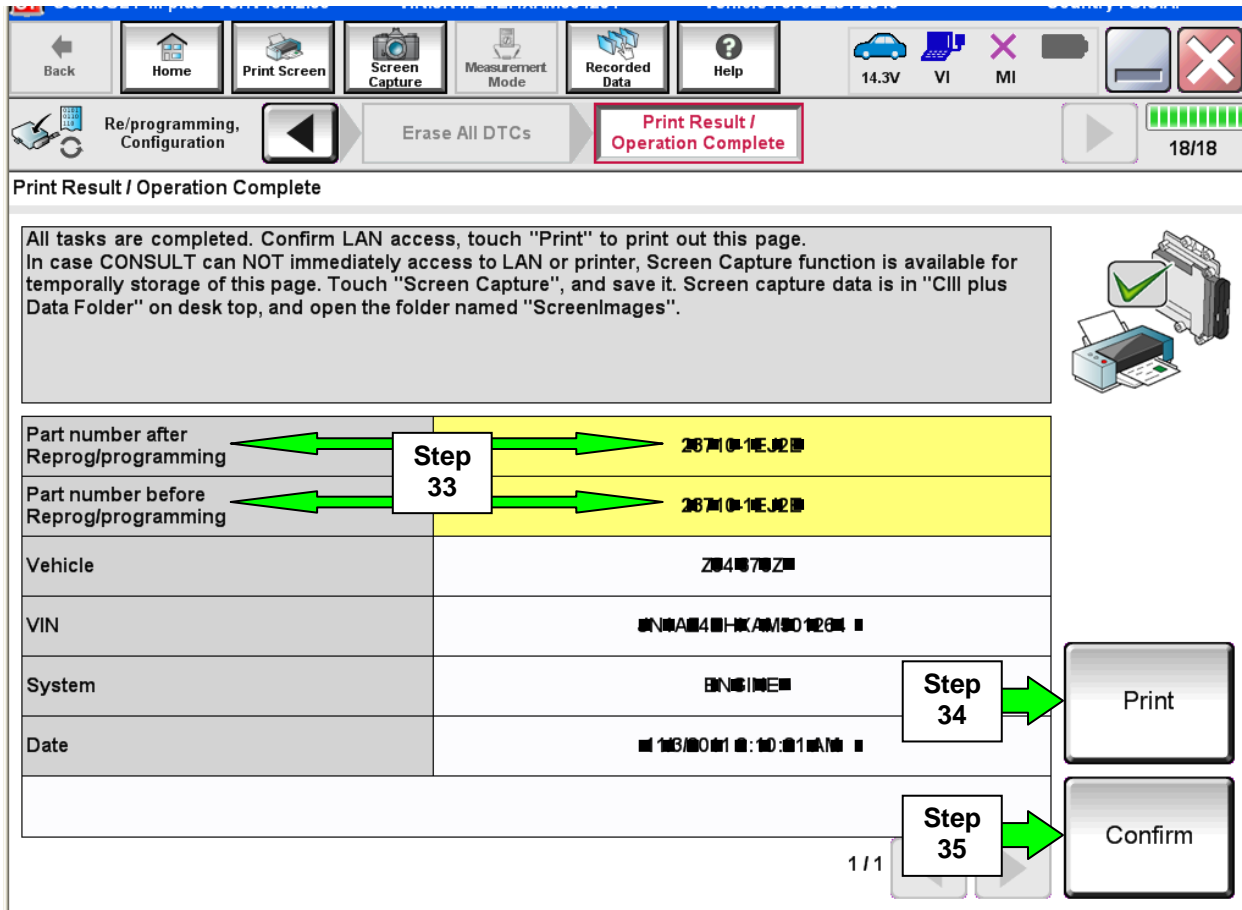


Figure 24a

NOTE: If you can not print the above screen:

- Select Screen Capture.
- Name the file.
- Save the file in My Documents.
 - A copy of the screen is now saved in the CONSULT PC. It can be retrieved and printed at a later time.

36. Close C-III plus.

37. Turn the ignition OFF.

38. Disconnect the plus VI from the vehicle.