



# Service Bulletin

File in Section: -

Bulletin No.: PIP5100A

Date: October, 2013

## PRELIMINARY INFORMATION

**Subject:** Allison LCT1000 Range Inhibit Or No Forward Reverse P0701 P0729 P0731 P0732 P0733 P0734 P0735 P0751 P0756 P0761 P0877 Or P2723 May Be Set

**Models:** 2011-2014 Chevrolet Silverado  
2011-2014 GMC Sierra

**This PI was superseded to update model years. Please discard PIP5100.**

The following diagnosis might be helpful if the vehicle exhibits the symptom(s) described in this PI.

### Condition/Concern

Some customers may comment that the vehicle will not move in forward or reverse.

Codes P0701 P0729 P0731 P0732 P0733 P0734 P0735 P0751 P0756 P0761 P0877 or P2723 may be set.

This condition may occur after the replacement of the spin-on oil filter.

### Recommendation/Instructions

Many aftermarket spin-on filters are shipped with a protective shrink-wrap packaging that may inadvertently be introduced into the transmission during filter installation.

This can contribute to a condition where the valve body separator plate orifices can become plugged.

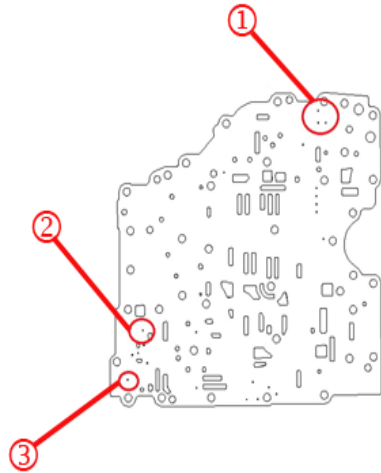
Always closely inspect the separator plate for this condition anytime the valve body is removed.

There are many possible locations where the plastic may lodge. The following are three locations seen on field returned transmissions:

- Modulated main feed orifice- P0701 P0729 P0731 P0732 P0733 P0734 P0735 P0751 P0756 P0761 may set if this orifice is blocked.
- PCS1 feed hole-An intermittent or no reverse condition can be exhibited when the PCS1 feed is blocked along with P2723 setting.
- Reverse pressure orifice-Drive range may be inhibited along with P0877 setting.

The most common areas of blockage are shown in the picture below.

**Note:** Low main pressure (50 psi) continuous or intermittent regardless of modulated main pressure control solenoid current may be caused by the modulated main pressure control solenoid feed orifice being blocked.

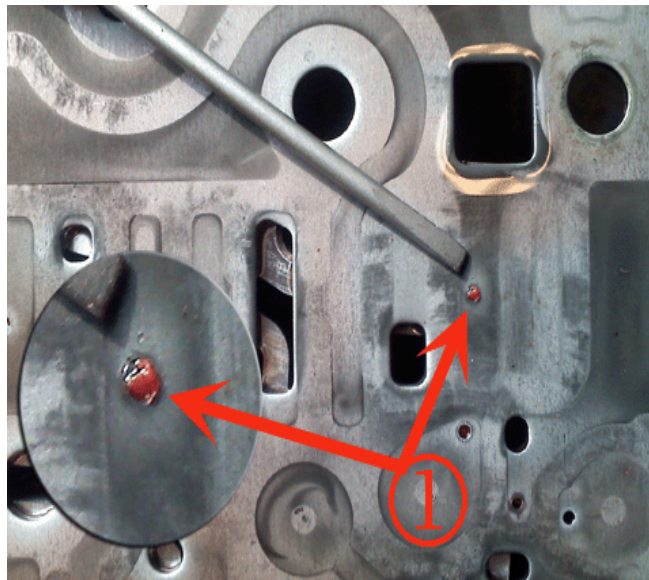


3632300

Call out 1  
Reverse Pressure Orifice.

Call out 2  
Modulated main feed orifice.

Call out 3  
PCS1 Feed.



3287575

Call out 1  
Example of blockage.

Please follow this diagnostic or repair process thoroughly and complete each step. If the condition exhibited is resolved without completing every step, the remaining steps do not need to be performed.