

TSB 1302
 Revise Date:
 By:
 Note:

INSTALLATION INSTRUCTIONS FOR REPLACEMENT OF 95" E-BRAKE CABLE ON THE PASSENGER SIDE TO 105".



TECHNICAL SERVICE INSTRUCTIONS

TSB1302: SOM UNITS, INSTALLATION INSTRUCTIONS FOR REPLACEMENT OF 95" E-BRAKE CABLE ON THE PASSENGER SIDE TO A 105" .

SAFETY

Read repair procedure before beginning. If you do not understand any part of the repair procedure contact: Mel Williams, Director of Parts and Warranty at 1-866-953-5555 or by E-mail @ mwilliams@ ARBOCsv.com.

Good mechanics safety practice must be followed in any repair to the brake system.

Safety practices should include but not limited to properly supporting the chassis, axles, blocking tires, and a work area free of clutter.

Repair shops safety rules must be followed and safety equipment used.

O.E.M. Battery and auxiliary battery must be disconnected.

Vehicles Affected: SOM Buses, Replacement of passenger side E-Brake cable.

Condition: 1. Replace 95" E-Brake cable with a 105" E-brake cable. 2. Install a E-brake routing cable retaining hook onto chassis main rail.

Order Repair Kit: 1406449 E-brake Cable Kit TSB 1302

Labor Time Allowance: Labor OperationCode: Replace Cable - 015201 - 1.0 Hour, Park Brake Bracket - 019902 - .5 Hour.

Install

Disposal of Parts: N/A

Tools Required:

1. Hoist system, one able to raise unit and support bus.
2. Two (2) - 7/16" Wrenches.
3. 13mm Socket.
4. 6' Long Ratcheting strap used in removing and installing brake cable.
5. Certified Welder.
6. Welding blanket.

Repair Kit: 1406449 Contains:

1. ARBOC Part# 1405783, Cable, Brake 3/8" x 105". 1pcs
2. ARBOC Part#1305868, Park Brake Bracket. 1pcs
3. ARBOC Part# 377473, Clamp 2" Vinyl Coated. 1pcs.

TECHNICAL SERVICE INSTRUCTIONS

TSB1302: SOM UNITS, INSTALLATION INSTRUCTIONS FOR REPLACEMENT OF 95" E-BRAKE CABLE ON THE PASSENGER SIDE TO A 105".

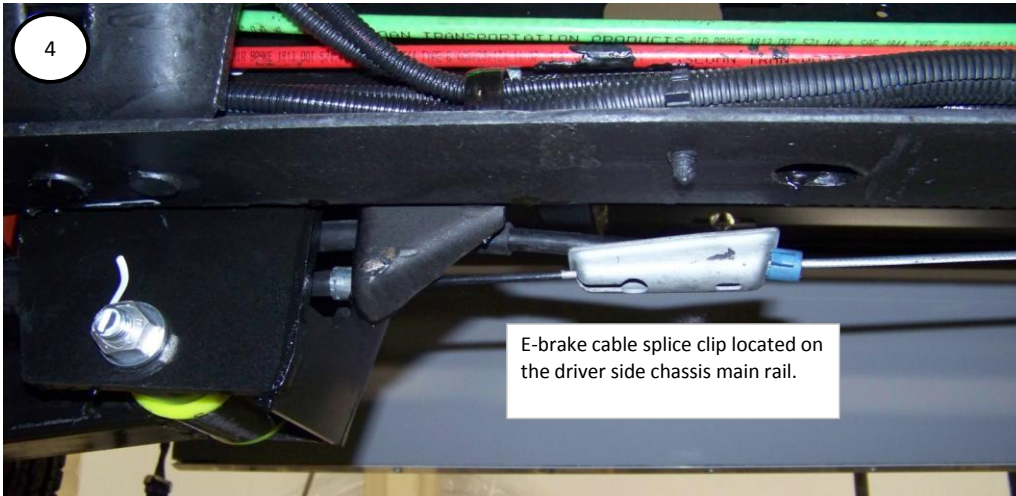
Removal of passenger side E-brake cable from rear wheel hub back to brake cable splice clip located on driver side chassis rail.

Step 1: Pull bus on to hoist to raise unit to a comfortable working height.

Step 2: Deflate the rear air shocks. This is to prevent an accidental release air pressure that could cause your hands being pinched between chassis parts.

Step 3: Disconnect OEM and auxiliary battery.

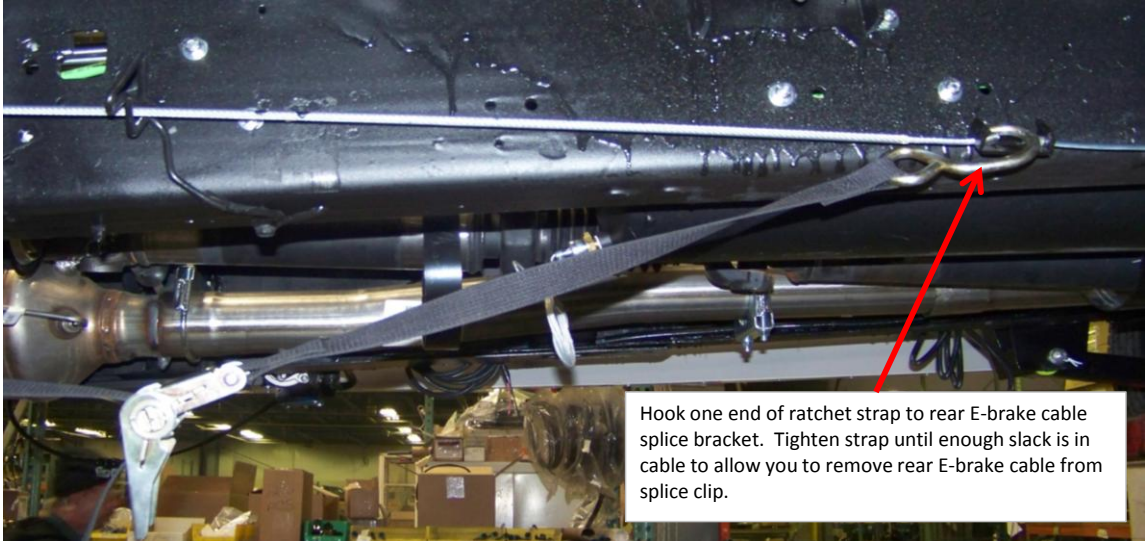
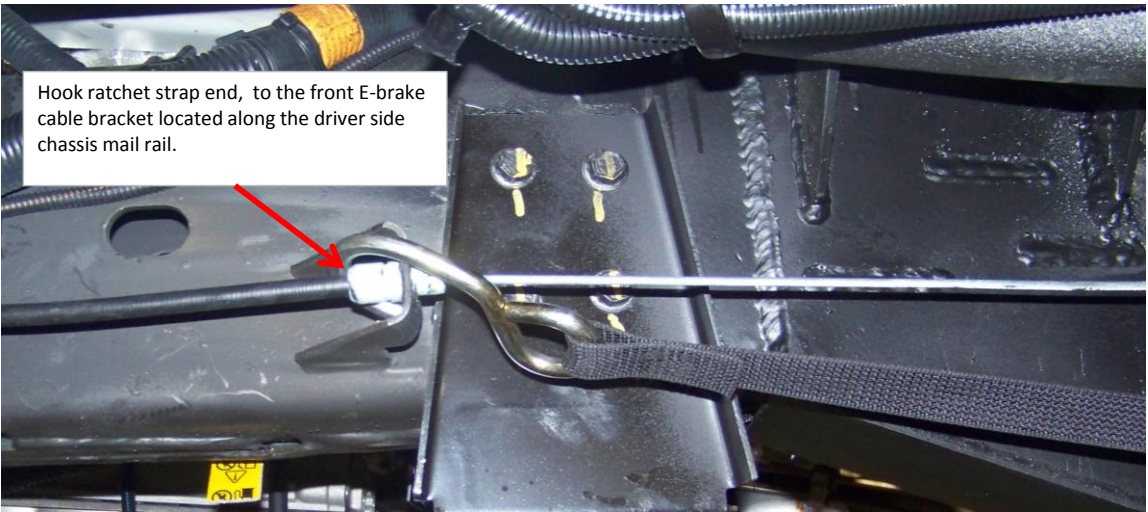
Step 4: Locate the E-brake splice clip located on the outside of the driver side chassis main rail.



TECHNICAL SERVICE INSTRUCTIONS

TSB1302: SOM UNITS, INSTALLATION INSTRUCTIONS FOR REPLACEMENT OF 95" E-BRAKE CABLE ON THE PASSENGER SIDE TO A 105".

Step 5: With E-Brake pedal released, using the 6 foot ratchet strap, Clip one end of the strap to the front E-brake cable bracket located along chassis main rail. Hook other end of ratchet strap to E-brake cable splice bracket located in front of rear axles. Tighten strap until enough slack is in cable to allow you to remove rear E-brake cable from splice clip.

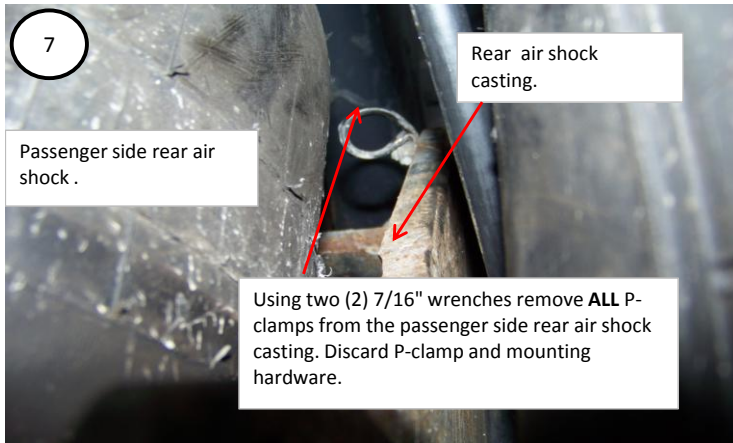


TECHNICAL SERVICE INSTRUCTIONS

TSB1302: SOM UNITS, INSTALLATION INSTRUCTIONS FOR REPLACEMENT OF 95" E-BRAKE CABLE ON THE PASSENGER SIDE TO A 105".

Step 6: Remove original rear section of the E-brake cable from passenger side of unit. Discard E-brake cable.

Step 7: Using two (2) 7/16" wrenches remove **ALL** P-clamp from the rear air shock casting. Discard P-clamp and mounting hardware.



Step 8: Inspect air bag for damages. If damage is found Contact ARBOC Service department for replacement instruction and authorization number.

Step 9: Using a 13mm socket remove the 2" P-clamp on the rear differential cover plate. You will be moving the P-clamp from the right side of the differential cover plate to the left side. Replace all bolts. Reference pictures provide. Note: some buses had the 2" P-clamp may be mounted to the chassis crossmember located just above the rear axle / differential. Relocate 2" P-clamp to the left side of the differential cover plate. ARBOC Part# 377473, 2" Vinyl coated P-clamp. Use provide pictures as reference.



TSB 1302
Revise Date:
By:
Note:

INSTALLATION INSTRUCTIONS FOR REPLACEMENT OF 95" E-BRAKE CABLE ON THE PASSENGER SIDE TO 105".

TECHNICAL SERVICE INSTRUCTIONS

TSB1302: SOM UNITS, INSTALLATION INSTRUCTIONS FOR REPLACEMENT OF 95" E-BRAKE CABLE ON THE PASSENGER SIDE TO A 105".



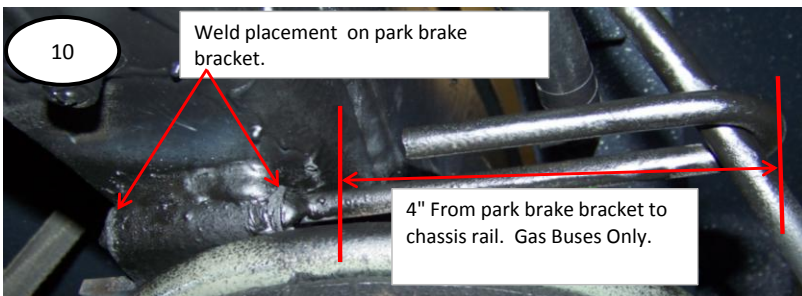
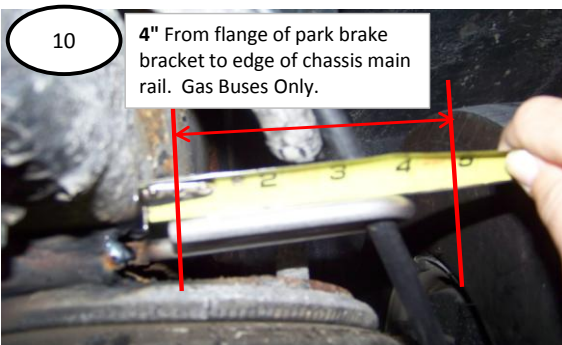
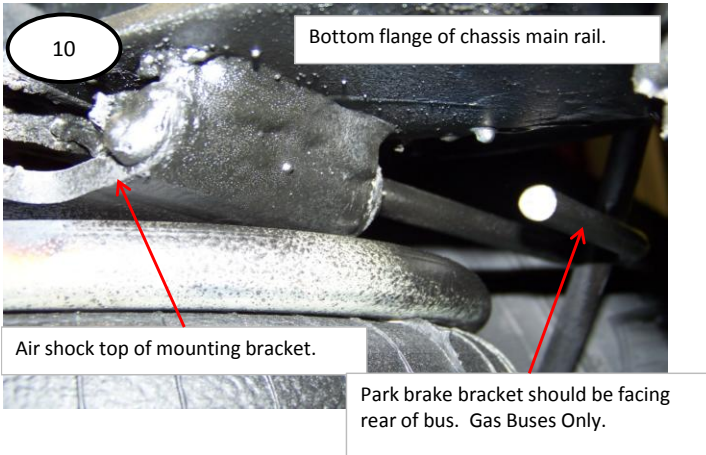
2" Vinyl coated P-clamp located on the rear cover plate of differential. Reference Picture for correct orientation

TECHNICAL SERVICE INSTRUCTIONS

TSB1302: SOM UNITS, INSTALLATION INSTRUCTIONS FOR REPLACEMENT OF 95" E-BRAKE CABLE ON THE PASSENGER SIDE TO A 105".

Passenger side J-hook location for, **GAS SOM UNIT ONLY:**

Step 10: Cover passenger air shock with a welding blanket to prevent damage to the air bags. Install the E-brake Park Brake Bracket. (ARBOC Part# 1305868,) on the passenger side, between the top of the air shock casting and the bottom edge of the chassis rail. Reference pictures provided. You should have 4" from edge of routing hook to edge to chassis main rail. Weld hook into place reference pictures for weld location.



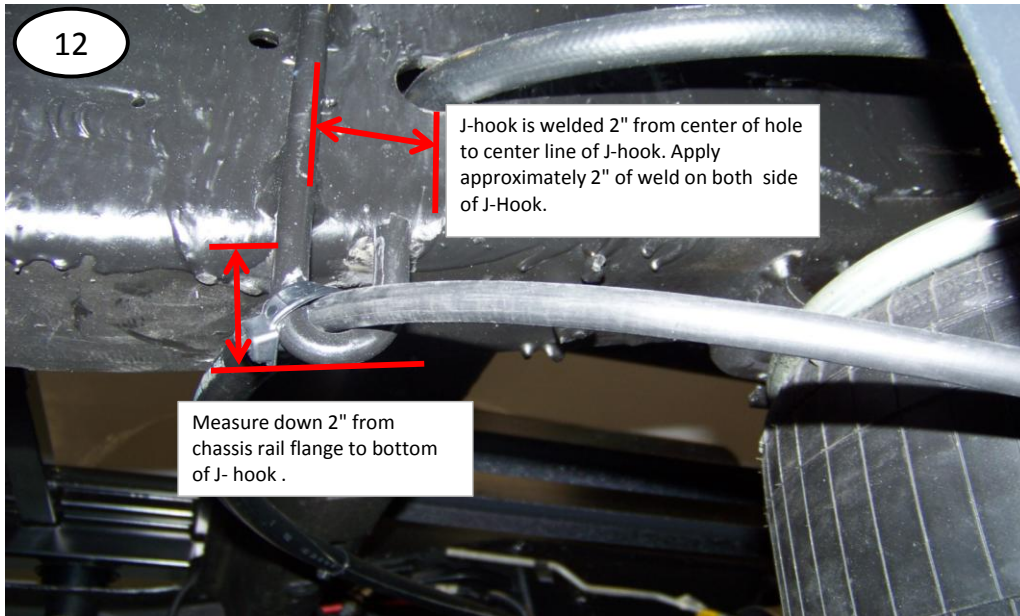
Step 11: **On Gas Buses,** use TSB1303 for the routing, adding protective hose to the E-brake cable, and securing the E-brake cable to the passenger side air shock casting. Will need to order

TECHNICAL SERVICE INSTRUCTIONS

TSB1302: SOM UNITS, INSTALLATION INSTRUCTIONS FOR REPLACEMENT OF 95" E-BRAKE CABLE ON THE PASSENGER SIDE TO A 105".

Passenger side J-hook location for, **Diesel SOM UNIT ONLY:**

Step 12: Cover passenger air shock with a welding blanket to prevent damage to the air bags. Install the E-brake park brake bracket hook (ARBOC Part# 1305868,) Weld an E-brake cable support J-hook 2" over from center of hole to center line of J-hook, 2" down from chassis rail flange to bottom of J-hook. Apply approximately 2" of weld on both sides of J-hook.



Step 13: **On Diesel Buses,** use TSB1301 for the routing, adding protective hose to the E-brake cable, and securing the E-brake cable to the passenger side air shock casting.