



**SUBJECT:** SANTA FE MDPS UPDATE (SERVICE CAMPAIGN TN8)

**Warranty Information:**

OP CODE	OPERATION	OP TIME
20CG06R0	EPS ECU UPGRADE	0.3 M/H

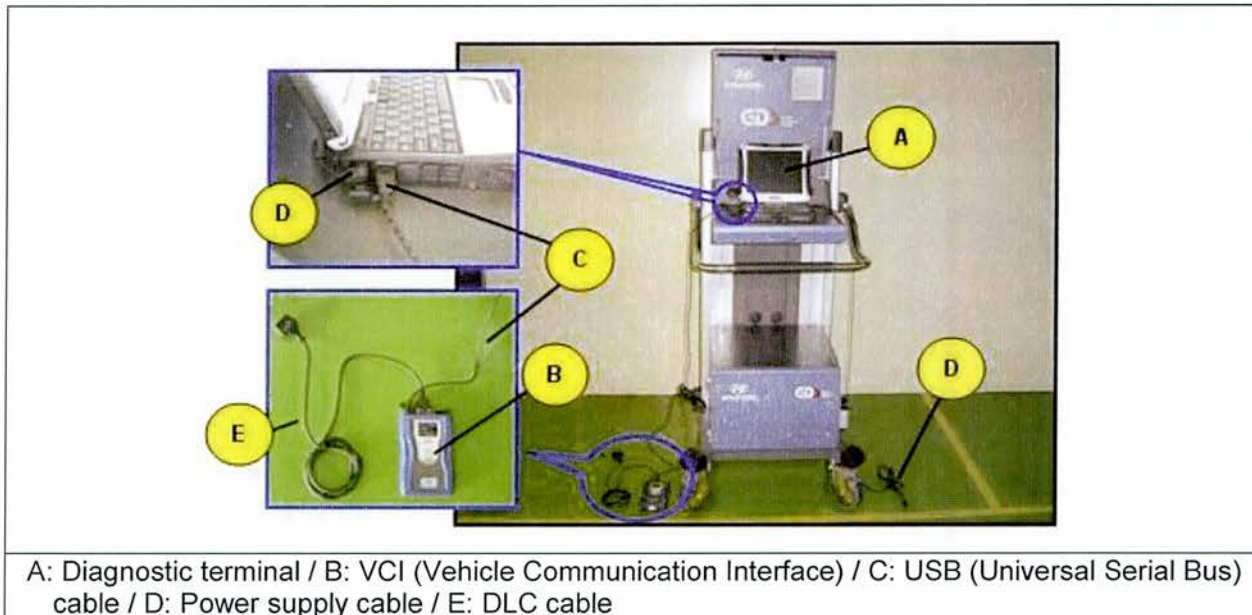
NOTE: Submit Claim on Campaign Claim Entry Screen

**Service Procedure:**

**⚠ Cautions during ECM update**

- 1) Make sure the vehicle's battery has reasonable charge. If the vehicle has been in storage for days, run the engine to ensure an adequate battery charge state for reliable update results.
- 2) Turn off all lamps (do not leave head lamp switch in auto mode) and all accessories (including heater, A/C, blower, radio, seat warmer, defroster, etc.) so that the battery will not be discharged during update.
- 3) Perform update with the ignition switch in the ON position.
- 4) Connect the USB cable between the VCI and the GDS when performing the update.
- 5) Be careful not to disconnect any cables connected to the vehicle or scan tool during update.
- 6) Do not start the engine during update.
- 7) Do not turn off the ignition switch during update.

**1. GDS INSTALLATION PROCEDURE**





1. Connect the power supply cable to the diagnostic terminal.

**\* NOTE**

*If attempting to perform the update with the power supply cable disconnected from the diagnostic terminal, make certain that the diagnostic terminal is charged enough for the update. If not, the update may fail in progress. Therefore, it is strongly recommended to connect the power supply cable to the diagnostic terminal during the update procedure.*

2. Connect the USB cable between the VCI and the diagnostic terminal.

**\* NOTE**

*When performing the update using the GDS, wireless communication between the VCI and the diagnostic terminal is NOT available. Therefore, be sure to connect the USB cable between the VCI and the diagnostic terminal.*

3. Connect the 16-pin DLC cable from the VCI into the vehicle's 16-pin connector under the driver side instrument panel.

4. Set the ignition to the ON position.

**\* NOTE**

*For push-button start vehicles, without depressing the brake pedal push the start button twice.*

*For standard start vehicles, insert the key into the ignition and turn to the ON position.*

***For all vehicles, do not start the engine.***

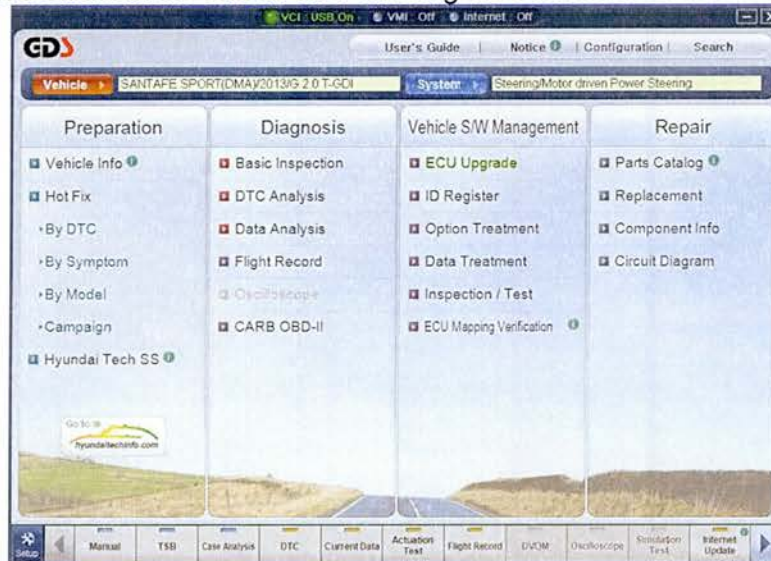
Turn the VCI and diagnostic terminal ON.

**2. AUTOMATIC UPDATE PROCEDURE USING THE GDS**

1. Choose **VIN** or **ECU Upgrade** on the initial screen.
2. Enter the vehicle information by pressing the **VIN Auto Detect** button, entering the vehicle's VIN or selecting the vehicle model, model year, engine/fuel type and **EPS (MDPS, Motor Driven Power Steering)** as the system and then click **OK**.



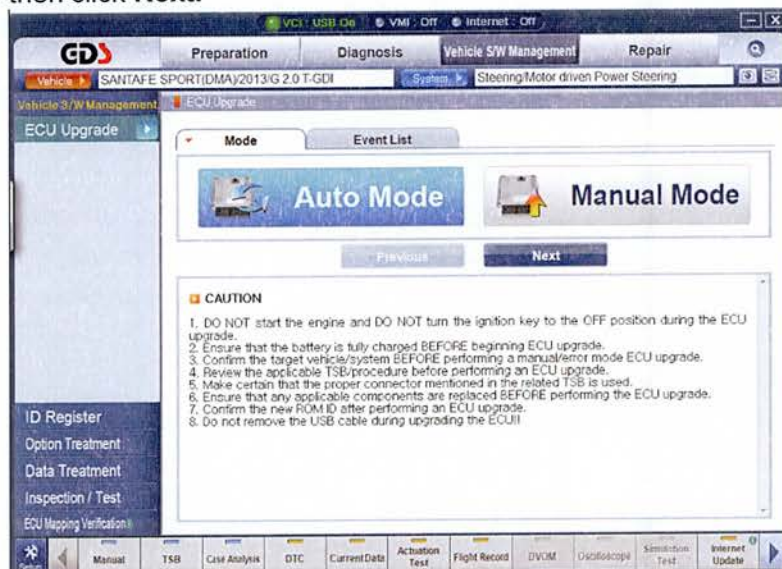
3. Select **ECU Upgrade** on the initial screen after entering the vehicle information.





**SUBJECT: SANTA FE MDPS UPDATE (SERVICE CAMPAIGN TN8)**

4. Select **Auto Mode** then click **Next**.



5. Select **EPS**, then read the **Preparation** and click **OK**.

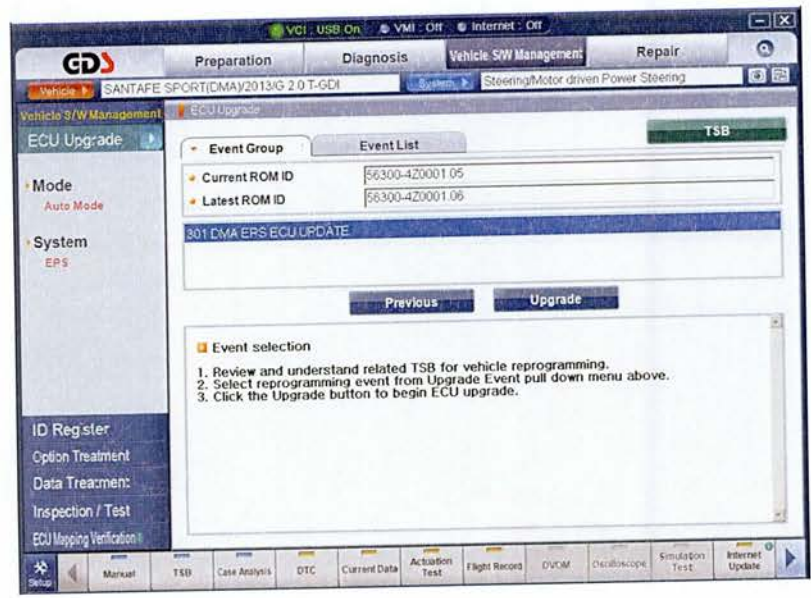


6. The GDS will read the vehicle's ROM ID.

**SUBJECT: SANTA FE MDPS UPDATE (SERVICE CAMPAIGN TN8)**

7. After the **Current ROM ID** is displayed, select the upgrade event, “**301.DMA EPS ECU UPDATE.**”

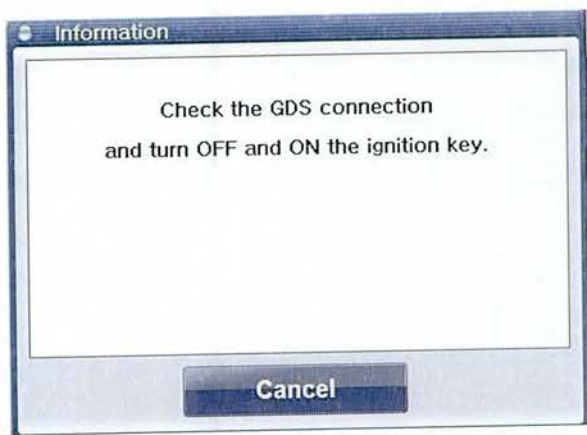
Click **Upgrade.**



8. The vehicle battery voltage is checked to make sure it is at least 12 volts to ensure reliable update results. Click **OK** if the results indicate **Voltage is OK.**

**\* NOTE**  
*If voltage is below 12 volts, click Cancel and then run the engine to ensure an adequate battery charge state for reliable update results.*

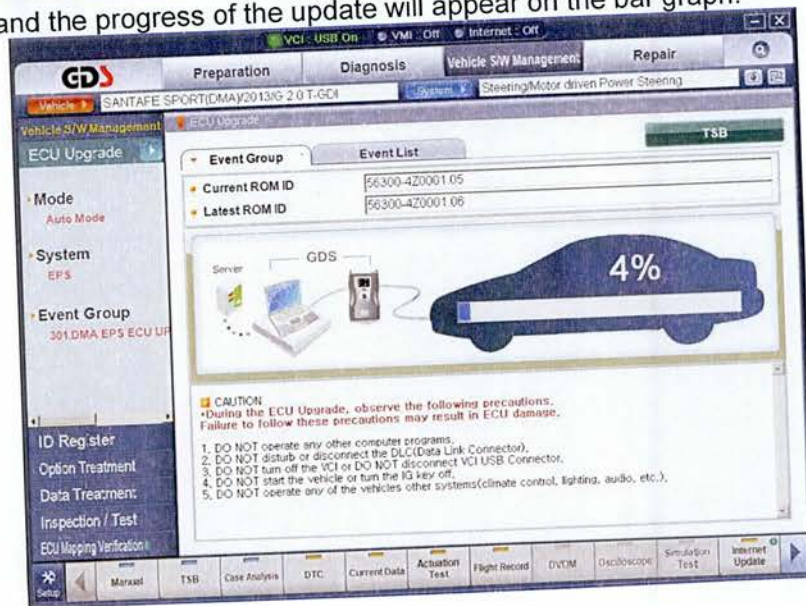
9. Cycle the ignition OFF, then ON again to begin the update.



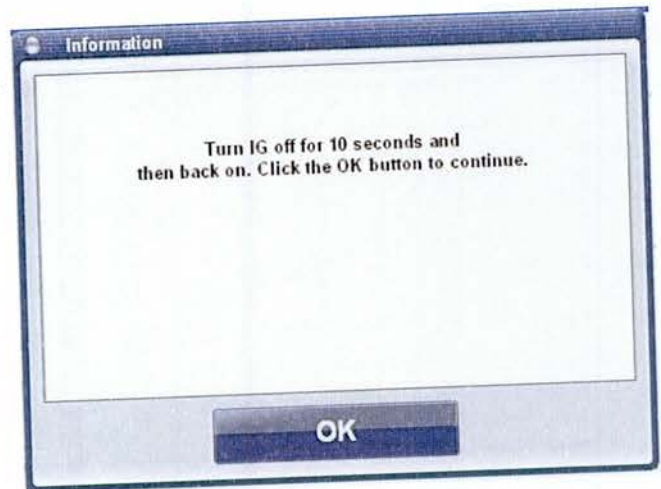


**SUBJECT: SANTA FE MDPS UPDATE (SERVICE CAMPAIGN TN8)**

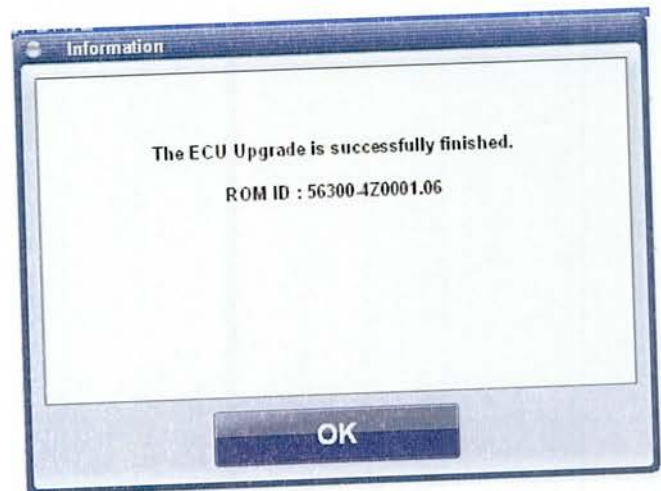
10. Update will begin and the progress of the update will appear on the bar graph.



11. Update will occur until 100% is reached on the bar graph. Turn the ignition OFF for 10 seconds, and then back ON again. Click **OK** to continue.



12. Click **OK** on the final screen, which indicates update is complete.



**SUBJECT: SANTA FE MDPS UPDATE (SERVICE CAMPAIGN TN8)**

13. Check if any incidental Diagnostic Trouble Codes (DTC) has been created by the update and clear the DTC (s) present.
14. Start the engine to confirm proper operation of the vehicle.

**3. MANUAL UPDATE PROCEDURE USING THE GDS**

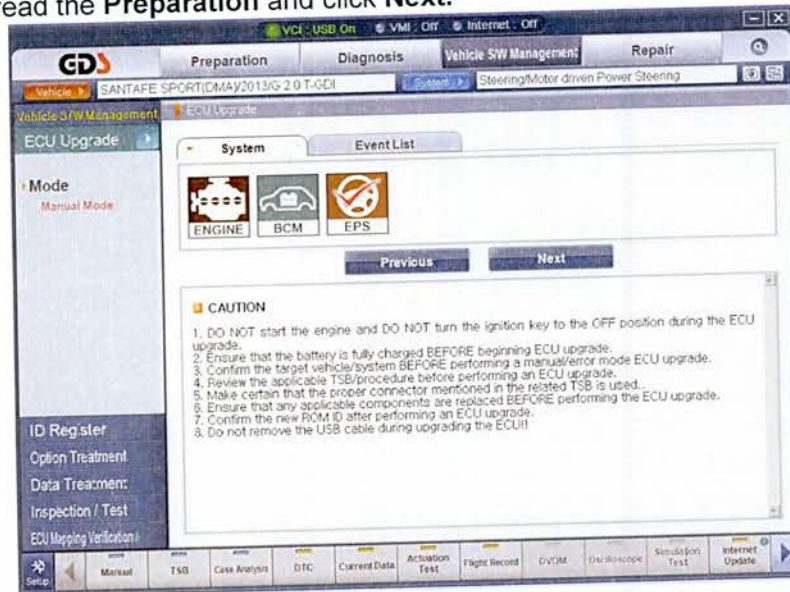
**CAUTION**

- Manual update should be performed only when automatic update fails.
- If automatic update fails, cycle the ignition OFF for 10 seconds, then back ON again to reset the control unit before performing manual update.

1. Within the **ECU Upgrade** screen, select **Manual Mode**, and then click **Next**.



2. Select **EPS**, then read the **Preparation** and click **Next**.





**SUBJECT: SANTA FE MDPS UPDATE (SERVICE CAMPAIGN TN8)**

3. Select the upgrade event, “301.DMA EPS ECU UPDATE” and click Next.



4. Latest ROM ID will be displayed as “56300-4Z0001.06.” Click Upgrade to continue.



5. Enter the appropriate password from the below table then click OK.

MENU	PASSWORD
DMA EPS : 56300-4Z000	4000

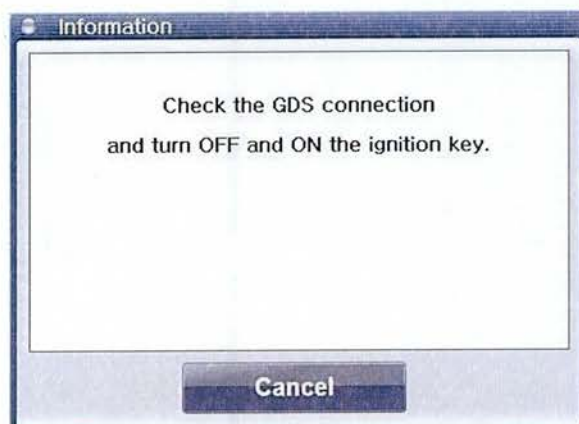
**SUBJECT: SANTA FE MDPS UPDATE (SERVICE CAMPAIGN TN8)**

6. The vehicle battery voltage is checked to make sure it is at least 12 volts to ensure reliable update results. Click **OK** if the results indicate **Voltage is OK**.

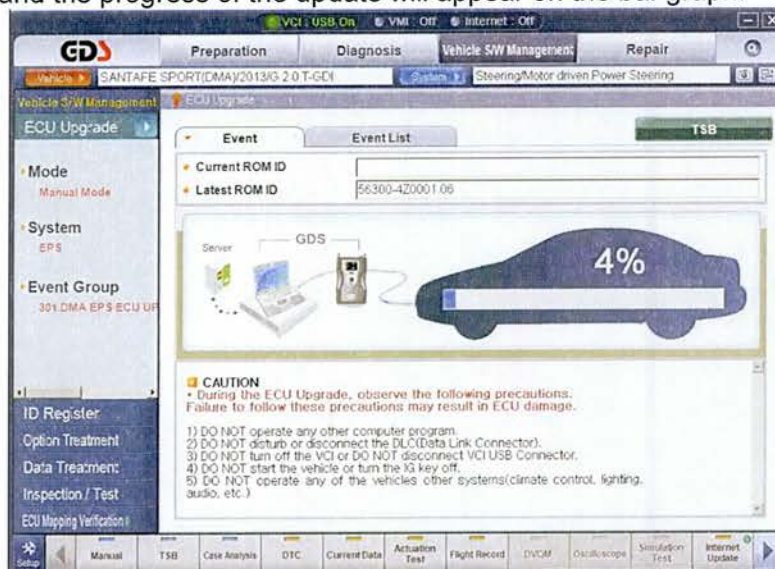
**\* NOTE**

*If voltage is below 12 volts, click Cancel and then run the engine to ensure an adequate battery charge state for reliable update results.*

7. Cycle the ignition OFF, then ON again to begin the update.



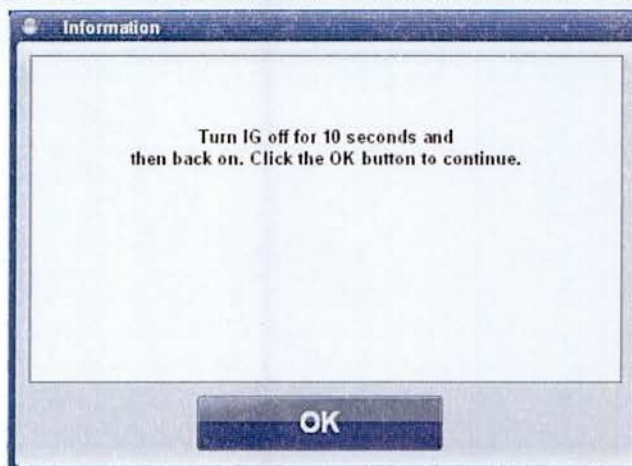
8. Update will begin and the progress of the update will appear on the bar graph.



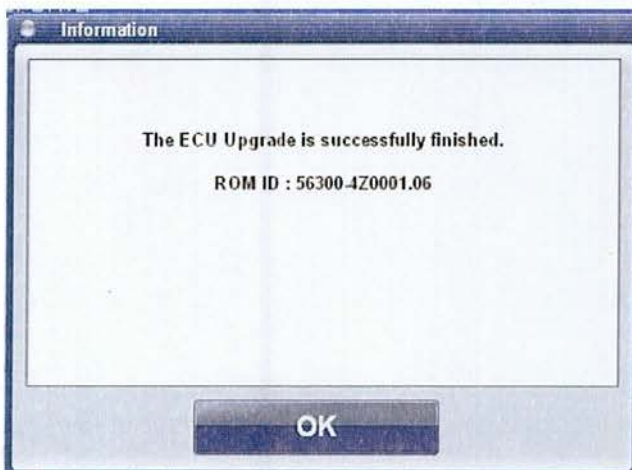


**SUBJECT: SANTA FE MDPS UPDATE (SERVICE CAMPAIGN TN8)**

9. Update will occur until 100% is reached on the bar graph. Turn the ignition OFF for 10 seconds, and then back ON again. Click **OK** to continue.



10. Click **OK** on the final screen, which indicates update is complete.



11. Check if any incidental Diagnostic Trouble Codes (DTC) has been created by the update and clear the DTC (s) present.
12. Start the engine to confirm proper operation of the vehicle.