

SB-10045181-6238

Countries: AUSTRALIA, BRAZIL, CANADA, UNITED STATES, MEXICO, SOUTH AFRICA
Availability: ISIS, Bus ISIS, FleetSIS, Body Builder
Major System: BRAKES
Current Language: English
Other Languages: [Français](#), [Español](#),
Viewed: 3282

Document ID: IK0400077
Revision: 7
Created: 4/11/2011
Last Modified: 7/18/2012
Author: Anthony Kelso

[Less Info](#)[Hide Details](#)

Coding Information

Copy Link	Copy Relative Link	Bookmark	Add to Favorites	Print	Provide Feedback	Helpful	Not Helpful
		View My Bookmarks				539	489

Title: Bendix Wingman fault.ACB display with SPN 886 FMI 7. ABS DTC 55. Sensor Alignment tool and instructions

Applies To: All

If unable to connect to Wingman ACB in Acom click here to view .
DESCRIPTION

ACB display with SPN 886 FMI 7. ABS DTC 55.

SYMPTOMS

- Electrical Fault , cluster display address 42 and fault displayed in ACB.

POSSIBLE DIAGNOSTIC TROUBLE CODES

DTC	SPN	FMI	MODULE	DESCRIPTION
55			ABS	Maximum misalignment value is reached
	886	7	ACB display	

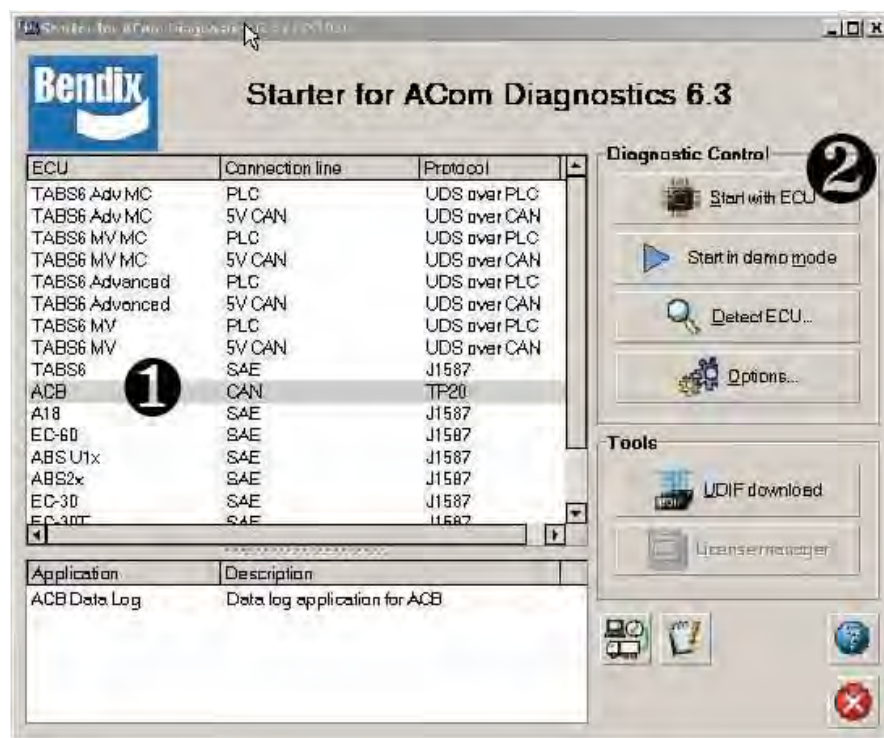
PARTS INFORMATION

Part #	Description	Qty.
K065284	ACB Alignment tool (Bendix)	1



TROUBLESHOOTING

If the system generates a Diagnostic Trouble Code, where a lamp or icon is illuminated on the instrument cluster, then ACom Diagnostics software – version 6.3 or later – is required. **Select "ACB" from the starter screen(1)**, then "Start with ECU" **(2)** . Click "DTC" to show the diagnostic trouble codes.



When using ACom Diagnostics for the first time, the service technician will be asked to select the communication adapter for both the ACB and Bendix® EC-60™ controllers. While both controllers will use the same physical adapter, the technician will need to indicate which communication protocol to use for each. Once a successful connection has been made, these steps will no longer be necessary

RESOLUTION

ADJUSTMENT PROCEDURE

[Click HERE for Alignment Procedures](#)

RESET LATERAL MISALIGNMENT VALUE IN BENDIX® ACOM® DIAGNOSTICS


If a "radar misalignment" diagnostic trouble code (DTC) was logged, after repairs, the vehicle will need to be connected to a PC with ACom Diagnostics software to reset the "Misalignment Value" to zero.

1. In ACom Diagnostics select ACB, "Wingman" or "Wingman ACB" on the starter screen, and then select "Start with ECU." If unable to connect to Wingman ACB in Acom, click here > [IK0400093](#)
2. Select "Config" on the ACB Status window.
3. Select "Modify" on the Configuration Status window.
4. Select "Reset Misalignment Value" in the Change Configuration box.
5. Select "Write" button in the dialogue box.
6. Clear the Bendix® Wingman® ACB system trouble code using the procedure in Section 4.4: *Clearing Bendix® Wingman® ACB Diagnostic Trouble Codes (DTCs)*.
7. Close the ACom Diagnostics program and any open windows.
8. Cycle the vehicle ignition.

For additional diagnostics, adjustments, and repair information refer to the link below

OTHER RESOURCES

- <http://www.bendixvrc.com/itemDisplay.asp?documentID=5795>

 Hide Details	Feedback Information
<div> <div>Viewed: 3281</div> <div>Helpful: 539</div> <div>Not Helpful: 489</div> </div>	
No Feedback Found	

Copyright © 2012 Navistar, Inc.