



Service Bulletin

File in Section: -

Bulletin No.: PI0291A

Date: April, 2013

PRELIMINARY INFORMATION

Subject: High Release Efforts on Driver or Passenger Seat Back Latch or Release Handle
Difficult to Operate

Models: 2010-2012 Chevrolet Camaro

This PI is being revised to add the 2012 model year. Please discard PI0291.

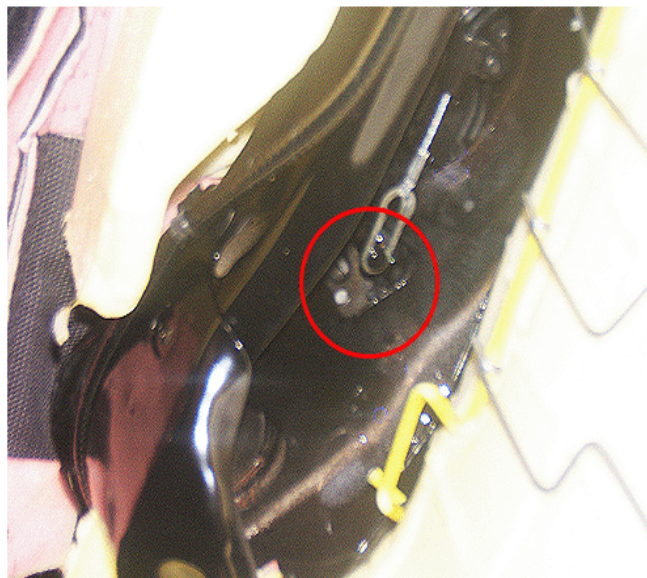
Condition/Concern

Some customers may comment on high release efforts of the driver or passenger seat back latch, or that the release handle may be difficult to operate.

The cause of this condition may be that the seat back latches, mounted to the left and right interior of the seat frame, may be lacking proper lubrication.

Recommendation/Instructions

Do This	Don't Do This
Lubricate the driver and passenger seat back latch.	<ul style="list-style-type: none">• DO NOT replace the driver or passenger seat back cushion frame.• DO NOT replace the seat back cushion latch release handle.



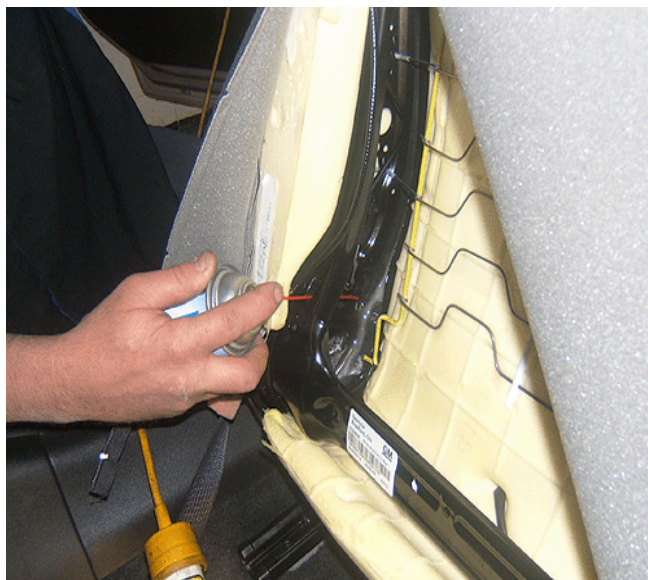
Technicians are to apply GM Super Lube®, P/N♦12346241 (in Canada, P/N 10953474), or equivalent, to the left and right seat back latches on both the driver and passenger seats, following the steps below. The location of the driver's left side seat back latch is shown circled in the graphic above.

1. Move the driver's seat fully forward.



2540451

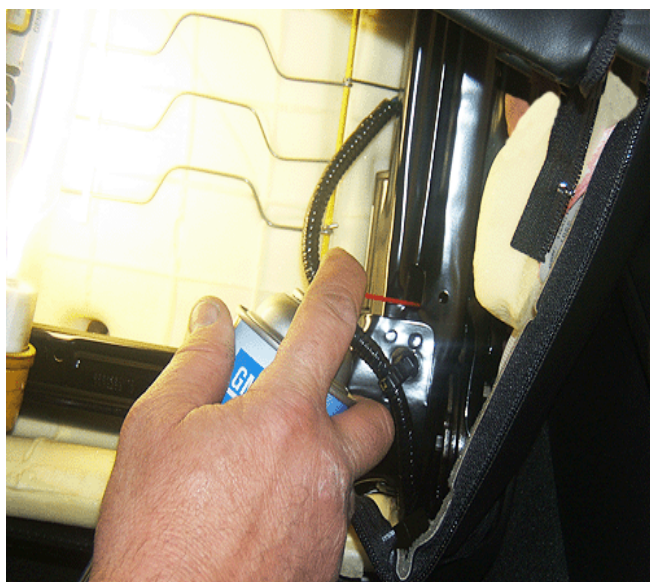
2. Gain access to the release latches by disengaging the seat back cover rear J-channel from the seat frame, then unzipping the cover on each side.



2540453

Note: One side latch has open access while the opposite side may have more limited access due to its location behind the seat recliner motor. Openings in the seat back frame should allow application of the spray to both the front and back side of the latches.

3. While pulling the seat back release handle open, spray a thin coating of GM Super Lube®, GM P/N 12346241 (in Canada, use P/N 10953474), or equivalent, onto the seat back latch on the left side of the seat frame. Continue to pull and release the handle several times while applying the grease.



2540454

4. Apply a thin coating of grease to the right side seat back latch in the same manner as step 3 above.
5. After lubrication is applied, continue to operate the seat back release handle several more times to help work the grease into the latch mechanisms.
6. Re-zip the seat cover on each side and re-secure the J-channel to the seat frame.
7. Repeat steps 1–6 on the passenger side.

Note: The seat latch release efforts are further increased if the seat release is not activated properly. The customer should be advised that when lifting the release handle, DO NOT pull the seat back forward as this will tend to increase tension on the seat back and cause higher release efforts.

Warranty Information

For vehicles repaired under warranty, use:

Labor Operation	Description	Labor Time
C9958*	Lubricate Driver and Passenger Seat Back Latches	0.4 hr
*This is a unique labor operation for bulletin use only. It will not be published in the Labor Time Guide.		