



# SERVICE BULLETIN

Classification: AT10-010	Reference: NTB10-150	Date: December 22, 2010
-----------------------------	-------------------------	----------------------------

## 2010 ALTIMA, ROGUE, AND SENTRA MIL IS ON AND/OR SLOWER THAN NORMAL ACCELERATION

**APPLIED VEHICLES:** 2010 Altima Sedan (L32) with QR25 engine  
2010 Altima Coupe (CL32) with QR25 engine  
2010 Sentra (B16) with MR20 or QR25 engine  
2010 Rogue (S35)

### IF YOU CONFIRM

The vehicle has slower than normal acceleration from a stop at times,  
**and/or**

The customer describes the vehicle has slower than normal acceleration from a stop at times,

**NOTE:** The condition of slower than normal acceleration from a stop, if it should occur, happens more commonly when the vehicle has been driven for extended periods at highway speeds.

**and/or**

The MIL is ON with DTC P1778 (STEP MOTOR) stored in Engine and/or Transmission.

**and/or**

Only for Sentra without ABS; MIL is ON with DTC P0720 (OUTPUT SPEED SENSOR) stored in Engine and/or Transmission.

### ACTIONS

1. Replace the transmission control valve assembly (valve body).
2. Reprogram the TCM (which includes TCM initialization).
  - Refer to Step 2 under TCM reprogramming in the SERVICE PROCEDURE to confirm TCM reprogramming applies and is needed for the vehicle you are working on.

**IMPORTANT:** The purpose of ACTIONS (above) is to give you a quick idea of the work you will be performing. You **MUST** closely follow the entire SERVICE PROCEDURE as it contains information that is essential to successfully completing the repair.

Nissan Bulletins are intended for use by qualified technicians, not 'do-it-yourselfers'. Qualified technicians are properly trained individuals who have the equipment, tools, safety instruction, and know-how to do a job properly and safely. NOTE: If you believe that a described condition may apply to a particular vehicle, **DO NOT** assume that it does. See your Nissan dealer to determine if this applies to your vehicle.

## PARTS INFORMATION

DESCRIPTION	VEHICLE	PART #	QTY
Valve Assy - Control	Sentra	31705-1XZ1B	1
	Altima (Sedan and Coupe)	31705-1XZ1B	
	Rogue	31705-1XF0D	1
Gasket - Oil Pan	Sentra	31397-1XF0C	1
	Altima (Sedan and Coupe)	31397-1XF0D	
	Rogue	31397-1XF0C	
Seal – O-ring	all	31528-1XA01	1
Seal – Lip	all	31526-1XG0A	1
Gasket – Drain Plug	all	11026-31X00	
Nissan CVT NS-2 Fluid *	all	999MP-NS200P *	up to 5 qt

\* Order Nissan CVT NS-2 Fluid through the Nissan Maintenance Advantage program: Phone: 877-NIS-NMA1 (877-647-6621), Fax 216.881.7923, Website order via link on dealer portal [www.NNAnet.com](http://www.NNAnet.com) and click on "Tire Advantage" link, or order direct at [www.nissantire.com](http://www.nissantire.com).

## CLAIMS INFORMATION

Submit a Primary Failed Part (PP) line claim using the following claims coding.

DESCRIPTION	PFP	OP CODE	SYM	DIA	FRT
RPL CONTROL VALVE ASSY	(1)	JD48AA	ZE	32	(2)
Reprogram TCM (includes initialization)		JE99AA			(2) (3)

- (1) Reference the Parts Information Table and use the applicable Control Valve Assy P/N as the PFP.
- (2) Reference the current Nissan Warranty Flat Rate Manual and use the indicated flat rate time.
- (3) FRT allows adequate time to access DTC codes and reprogram TCM. No other diagnostic procedures subsequently required. Do NOT claim any Diagnostic Op Codes with this claim.

## SERVICE PROCEDURE

### Control Valve Assembly Replacement

1. Replace the CVT control valve assembly.
  - Use the new control valve assembly listed in the Parts Information.
  - Refer to the Transmission section in the appropriate Service Manual for control valve assembly replacement information.
  - Make sure TCM initialization is performed (separately or as part of the TCM reprogramming).

#### NOTE:

- The transmission does not need to be removed for this procedure.
- Transmissions are vulnerable to particles (dust, metal, lint, etc.).
- When replacing a valve body, make sure your work environment (shop, workbench, etc.), the transmission area (sub-frame, oil pan, harness connector, etc.), and your hands are free of contamination.
- Make sure all parts are clean prior to installing on the vehicle. Unpack Service Parts just before installation.

### TCM Reprogramming (includes TCM initialization)

1. Connect CONSULT III (C-III) to the vehicle to begin the reprogramming procedure.
  - If you are not familiar with the reprogramming procedure, [click here](#). This will link you to the "CONSULT- III (C-III) TCM Reprogramming" general procedure.

#### CAUTION:

- Connect a battery charger to the vehicle battery.  
If the 12V battery voltage drops during reprogramming, the TCM may be damaged.
- Be sure to turn OFF all vehicle electrical loads.  
If a vehicle electrical load remains ON, the TCM may be damaged.
- For TCM reprogramming, the C-III MUST be connected to the VI using the USB cable.
- Be sure to connect the AC Adapter.  
If the C-III battery voltage drops during reprogramming, the process will be interrupted and the TCM will be damaged.

2. When you get to the TCM Reprogramming screen shown in Figure 1, confirm TCM reprogramming applies as follows:

A. On your C-III screen, look at the **Part Number** column (see Figure 1 example).

- If this column is **blank** (no part number listed), this **TCM reprogramming does not apply or has already been done**. Skip to page 7 and perform TCM initialization.
- If a part number (P/N) is listed, write it on the Repair Order and then go to Step B.

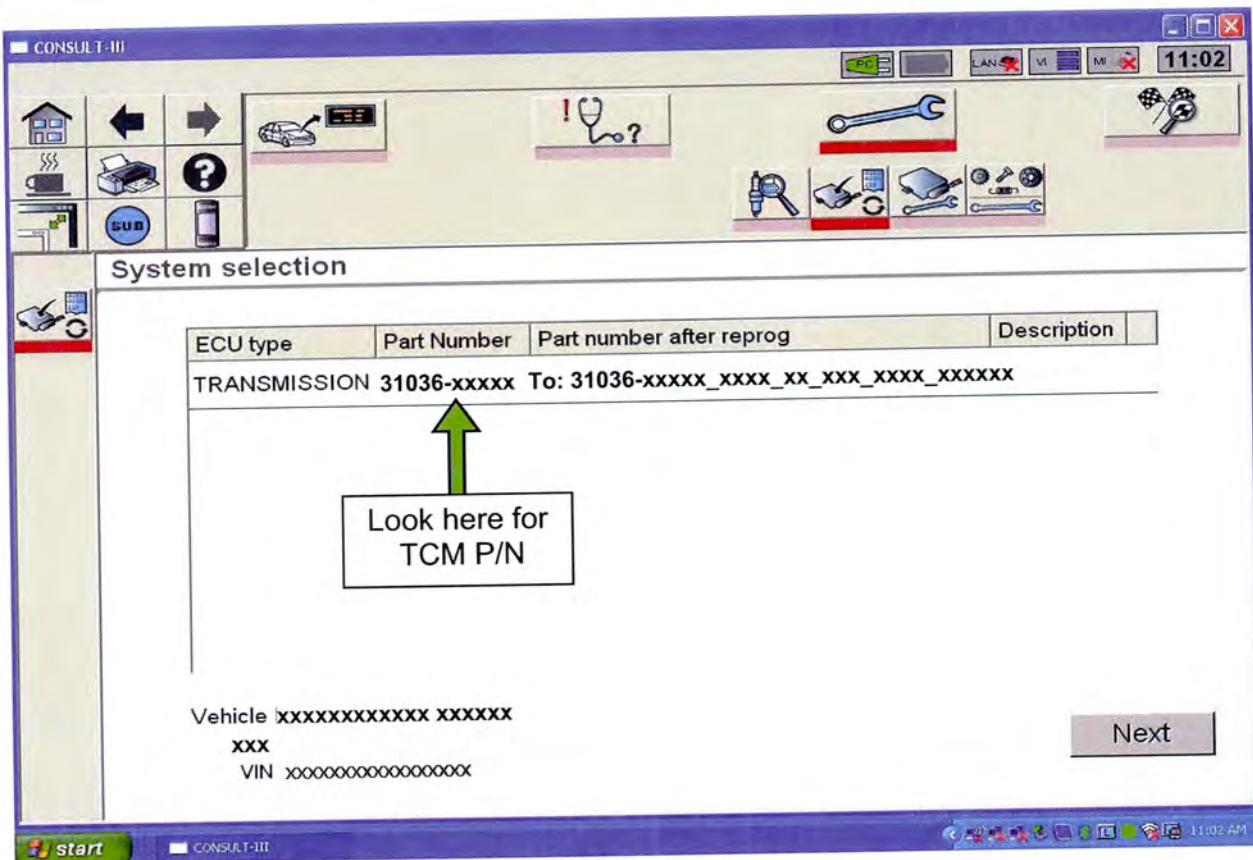


Figure 1

B. Compare the P/N you wrote down to the P/Ns in the **Current TCM P/N** column in **Table A** below.

- If there is a match, TCM reprogramming applies. Continue with the reprogramming procedure.

**NOTE:** If there are two lines (two reprogramming options) on your C-III screen, use the one that **does not** have the message "Caution! Use ONLY with NTBXX-XXX".

- If there is not a match, TCM reprogramming does not apply or has already been done. Skip to page 7 and perform TCM initialization.

**Table A**

Model	Current TCM P/N 31036 -
2010 Rogue w / QR25DE	CZ30A, CZ30B
	CZ31A, CZ31B
	CZ32A, CZ32B
	CZ33A, CZ33B
	CZ34A, CZ34B
	CZ35A, CZ35B
	CZ36A, CZ36B
	CZ37A, CZ37B
	CZ38A, CZ38B
	CZ39A, CZ39B
	CZ48A, CZ48B
CZ49A, CZ49B	
2010 Altima w / QR25DE	ZX00A, ZX00B
2010 Sentra w / MR20DE	ZT50A, ZT50B
	ZT52A, ZT52B
	ZT54A, ZT54B
	ZT80A, ZT80B
	ZT82A, ZT82B
	ZT84A, ZT84B
2010 Sentra w / QR25DE	ZT70A, ZT70B

3. If TCM reprogramming applies and you have performed TCM reprogramming; when reprogramming is complete, the screen in Figure 2 appears.

**Print the page from C-III (C-III page example below) and attach it to the Repair Order for Warranty documentation.**

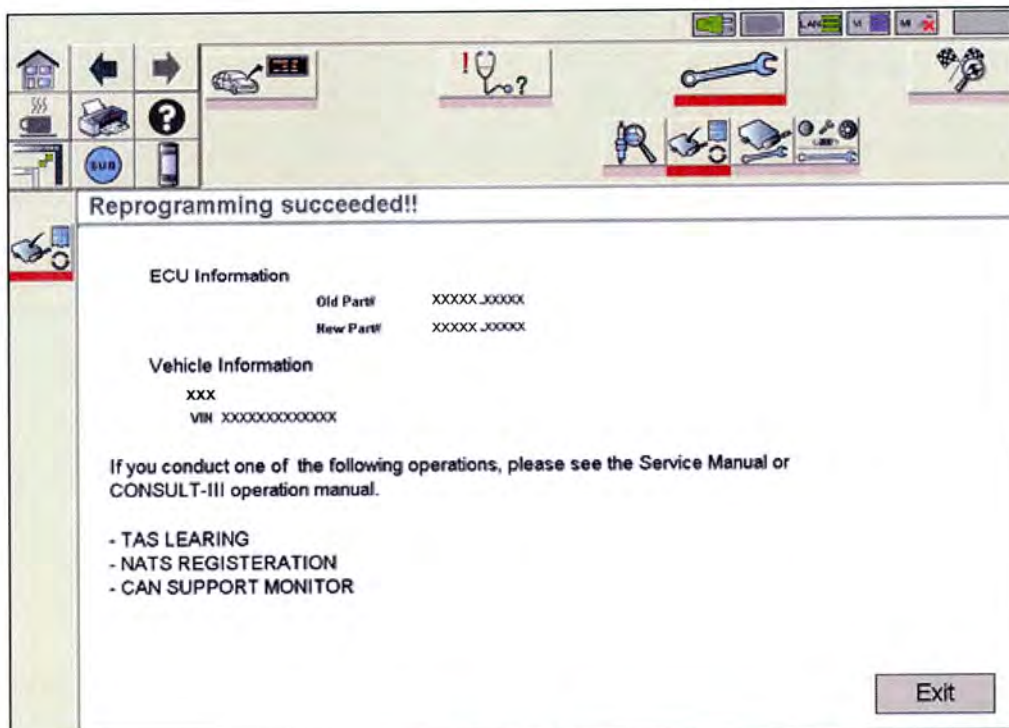


Figure 2

4. Make sure TCM initialization is performed as part of the TCM reprogramming procedure.
5. Make sure to erase DTCs from all systems.

**NOTE:** During reprogramming, DTCs will set in several systems and must be erased.

6. Test drive the vehicle and confirm the incident is resolved.

## TCM Initialization Procedure (if not done as part of TCM reprogramming)

**NOTE:** If reprogramming is not performed, make sure TCM initialization is performed as part of the control valve assembly replacement.

1. Set the parking brake with the selector lever in "P" (Park).
2. C-III and the Vehicle Interface (VI) should still be on and connected, and the vehicle ignition turned ON (engine OFF - not running).
3. Navigate C-III screens to Transmission, then Special Functions.
4. Select the TCM part number (P/N) and Calibration Data, and then print and save a copy.
5. Perform the initialization (EEPROM erase) procedure as follows:
  - a. Select Transmission Self Diagnostic Results.
  - b. Shift the selector lever to "R" (Reverse).
  - c. Press and hold the brake pedal.
  - d. Press and hold the accelerator pedal down about one-third, but no more than halfway. The purpose of this step is to get both the wide open throttle and closed throttle position signals to read "OFF" at the same time.
  - e. Press Erase.
  - f. Shift the selector lever to "P" (Park).
  - g. Turn the ignition OFF.
  - h. Wait 5 seconds.
  - i. Turn the ignition ON.
6. Select and print the TCM P/N and Calibration Data again.
7. Compare the values between the first and second Calibration Data prints.
  - The procedure is complete if the values are different.
8. Make sure to erase DTCs from all systems.

