



**GRAND VITARA**

# Technical Bulletin

Division: Automotive  
 Category: Technical

Section Title: Restraints  
 TSB No. TS 05 01140

**SUBJECT:** COUNTER-MEASURE PROCEDURE FOR DTC B1318  
**MODEL(S):** GRAND VITARA (JB424W/JB632W)  
**YEAR:** 2009  
**VIN BREAKS:** JB424W: ~JS3TD042494101207 May 26, 2009  
 JB632W: ~JS3TD148494100441 May 28, 2009

**CONDITION:** The Airbag warning light illuminates, and DTC B1318 is stored. This typically can result from a change in load on the passenger seat, such as a passenger shifting their weight on and off the seat, or an object (bag, briefcase, pet, etc.) bouncing on the seat while the vehicle is traveling.

**CAUSE:** Programming error in the occupant classification module (OCM).

**CORRECTION:** Reflash the program of the occupant classification module (OCM).

**PART(S) INFORMATION:**

Part Number	Description	Qty.	Notes
N/A	N/A	N/A	<b>Do Not</b> replace the Seat Cushion or OCM

**WARRANTY INFORMATION**

Labor Operation	Description	Failed Part Number	Complaint Code	Defect Code	Labor Time
QD9999	Cushion Assy, FR RH	85101-65JA0-REP	36	48	.6

**SPECIAL SERVICE TOOL INFORMATION**

Part Number	Description	Qty.	Notes
99963-80JKT	OCM Reflash Kit	1	<b>Kit does not include SDT or Laptop</b>

Technical Service Department  
 Dealership Circulation – Initial and file:

Service Manager	Parts Manager	Service Advisor	Technicians						

Suzuki bulletins are intended for use by professional technicians, NOT a "do-it-yourselfer." They are written to inform these technicians of conditions that may occur on some vehicles, or to provide information that could assist in the proper service of a vehicle. Properly trained technicians have the equipment, tools, safety instructions, and know-how to do a job properly and safely. If a condition is described, DO NOT assume that the bulletin applies to your vehicle, or that your vehicle will have that condition. See your authorized Suzuki dealer for information on whether your vehicle may benefit from the information. Suzuki reserves the right to change technical specifications at any time without prior notice.

# SB-10032904-9909

Model: GRAND VITARA	Section: Restraints	TSB No. TS 05 01140
---------------------	---------------------	---------------------

## NECESSARY TOOLS:

Note: Tools 1 through 6 are included in the OCM Reflash Kit, the Suzuki SDT (7) and the PC/Laptop (8) are available at the dealership.



	Part Name	Qty	Remark
1	RS232C Interface cable	1	
2	Reprogramming CD-ROM	1	
3	RS232C-USB converter	1	
4	Converter Driver software CD-ROM	1	
5	Power supply 100-240V AC	1	Includes four different type of power plugs
6	K-Line interface cable	1	
7	Suzuki SDT scan tool	1	Software version 3.5 or newer
8	PC or Laptop	1	Refer to "Minimum system requirement"

### Minimum system requirement

To setup the Reprogramming Software, the PC must meet with the following minimum system requirement.

- Windows XP or VISTA (Software will not work with any other OS)
- CD-ROM drive
- USB interface
- 100MB free HD Space
- 64MB RAM
- 200MHz CPU speed
- 800x600 Video resolution at 8 bit

### SOFTWARE INSTALLATION:

# SB-10032904-9909

Model: GRAND VITARA

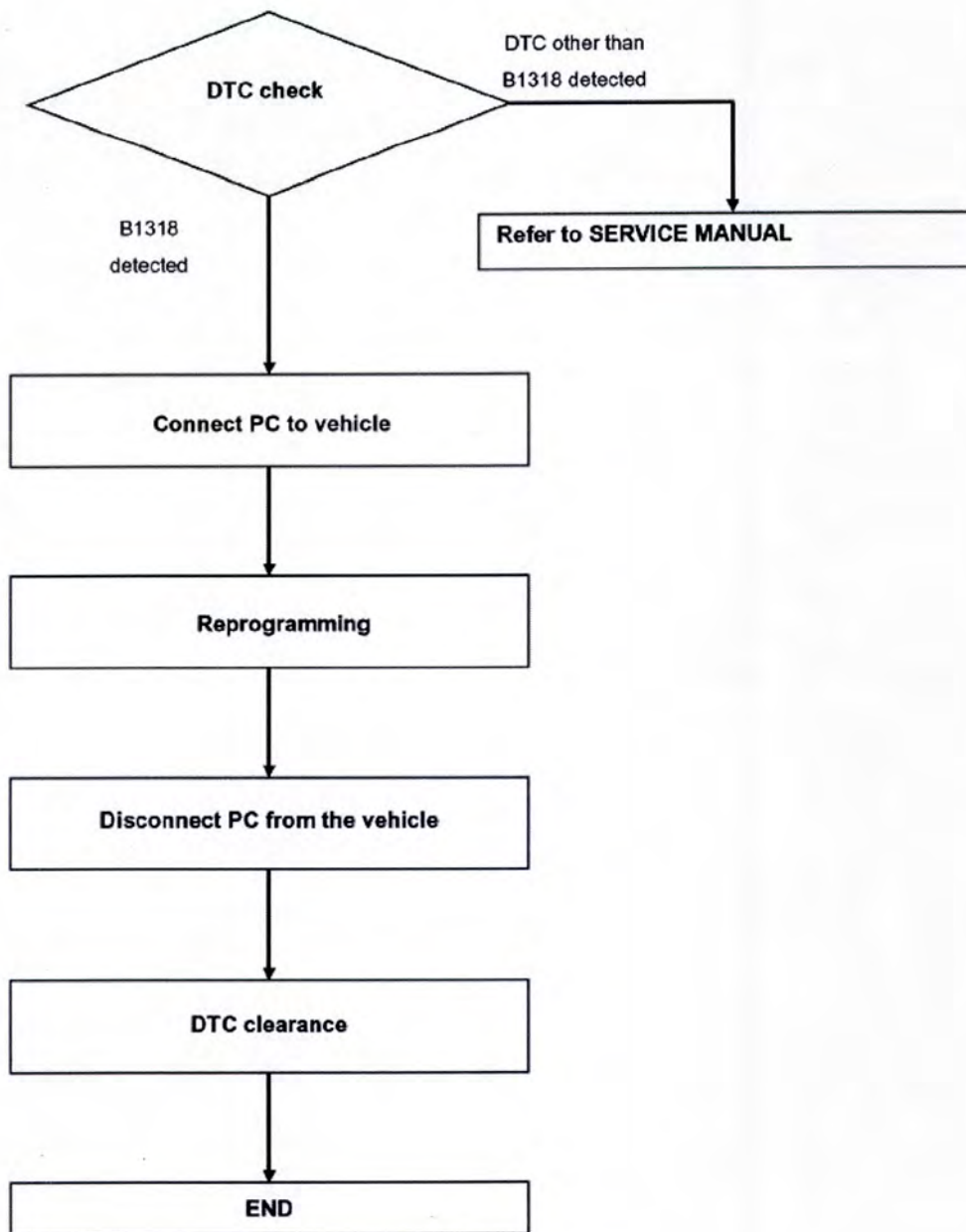
Section: Restraints

TSB No. TS 05 01140

Install the Reprogramming Software, and the USB TO RS232 Adapter drivers (if needed), according to the instructions included in the OCM Reflash Kit. These steps should only need to be performed once during the initial setup of the reprogramming tools and the PC.

## Repair instructions for B1318 countermeasure:

### Work Flow



### Reprogramming Procedures

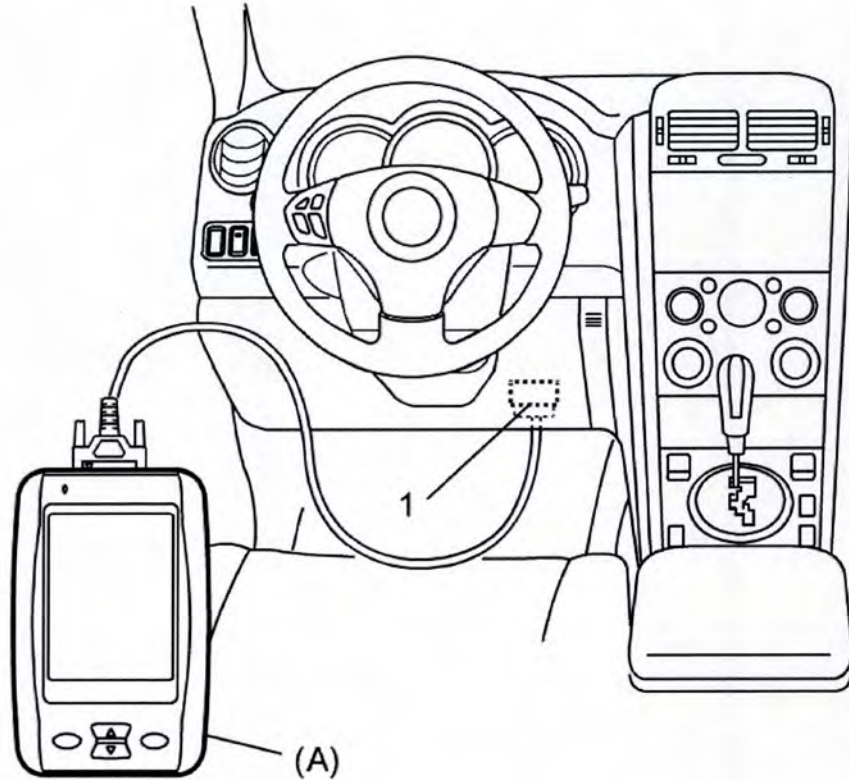
# SB-10032904-9909

Model: GRAND VITARA

Section: Restraints

TSB No. TS 05 01140

1. Turn ignition switch to OFF position.
2. Connect the SUZUKI SDT (A) to the data link connector (DLC)(1), located on underside of instrument panel to the right of the steering column.



3. Turn ignition switch to ON position.
4. Read DTC according to instructions displayed on SUZUKI SDT.  
Note: Be sure to check for both current and history DTC's
5. If the DTC B1318 is detected as either a current or history code, proceed to the next step.  
If any DTC(s) are stored and not B1318, stop here and refer to the Service Manual for diagnosis of that DTC(s).
6. After completing the check, turn ignition switch to OFF position and disconnect SUZUKI SDT from DLC.

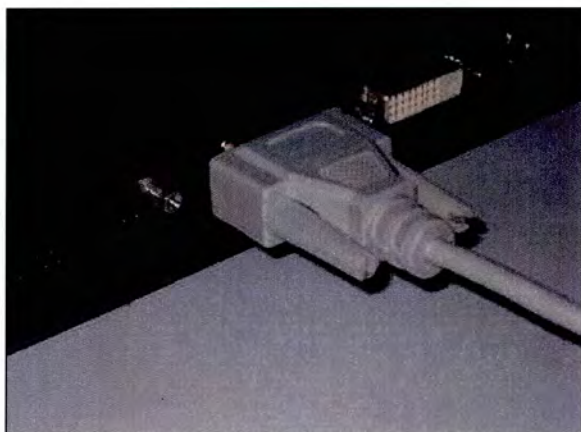
# SB-10032904-9909

Model: GRAND VITARA

Section: Restraints

TSB No. TS 05 01140

7. Connect the OCS- Interface Box to the PC using the RS232C serial interface cable (and the USB TO RS232 adapter, if needed).



Or



8. Connect Power supply 100-240V AC to power connector (for U.S. application) referring to the figure.

- Note the direction of the connector based on the pin size.
- Push the connector down and push it to the "left" end lock.



# SB-10032904-9909

Model: GRAND VITARA

Section: Restraints

TSB No. TS 05 01140

9. Connect the Power Supply to the OCS – Interface Box, and plug into a 120V AC power source.

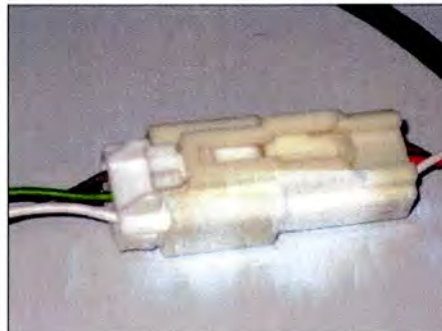


10. Make sure the ignition switch is turned off. If the ignition is turned on, or left on, while the reprogramming procedure is performed, DTC(s) indicating circuit problems may be stored in the SDM.

11. Find the OCS connector, located under the Passenger Seat Cushion, and disconnect it.  
Note: You should not need to remove the strap securing the harness.



12. Connect OCS male connector of the vehicle and OCS female connector of K-Line interface cable.



# SB-10032904-9909

Model: GRAND VITARA

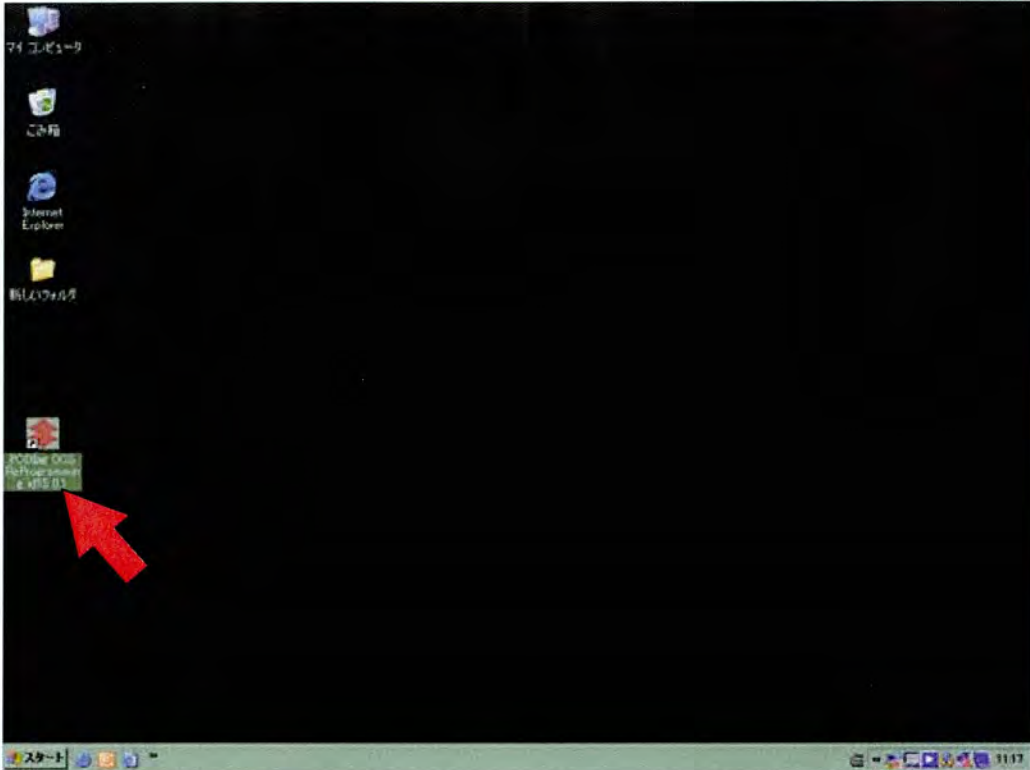
Section: Restraints

TSB No. TS 05 01140

## Reprogramming

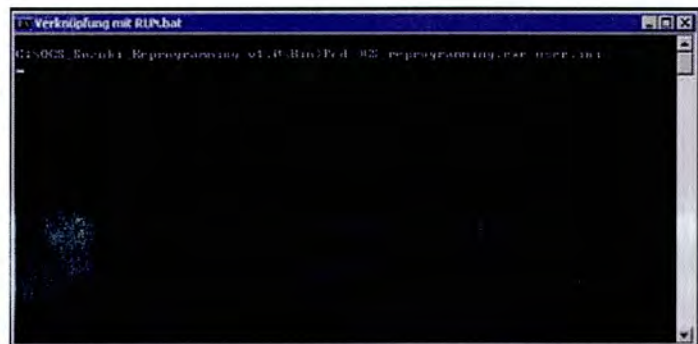
Note: Close any software programs running on the PC before reprogramming begins.

13. Make sure the ignition switch is turned off.
14. Check connection between Power supply 100-240V AC, RS232C interface cable, K-Line interface cable, OCS connector and PC.
15. Double click "PCDIag OCS Reprogramming id15" on PC desktop to open the program.



16. At the start of the program two windows will open, type your dealer code into the "OCS Reprogramming" box and click "OK".

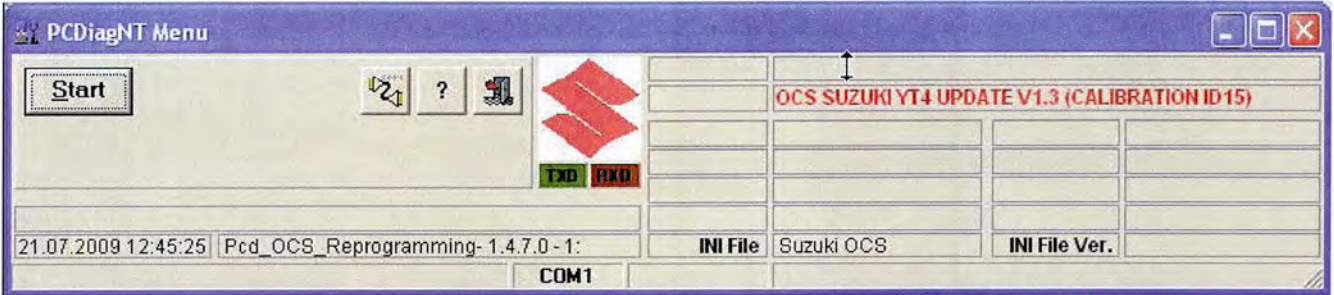
Note: The DOS window is due to a program call running in the background, and can be ignored.



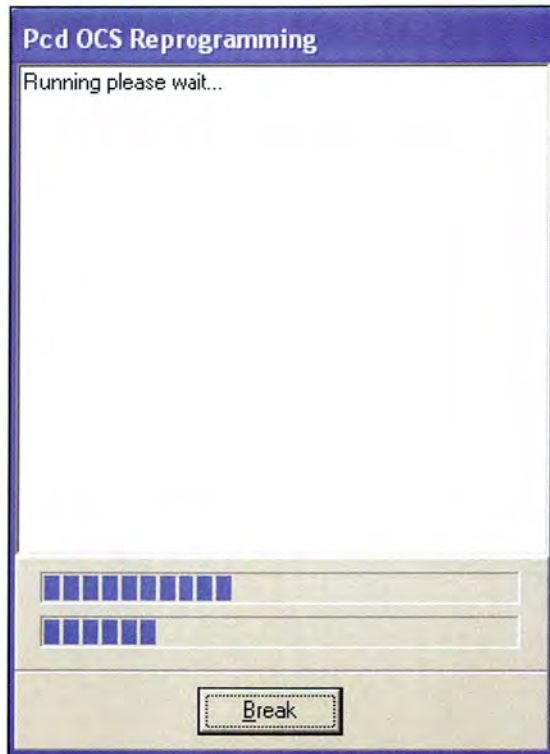
# SB-10032904-9909

Model: GRAND VITARA	Section: Restraints	TSB No. TS 05 01140
---------------------	---------------------	---------------------

17. The main window opens to show the following information, click the “Start” button to begin reprogramming.



18. Once the reprogramming starts the red and green boxes below the Suzuki logo will begin flashing to indicate active communication, if the boxes do not flash, refer to the “COM Port Troubleshooting instructions”, following step 24. An additional window will also appear, containing a progress bar to show the process for each step and the completion of the cycle.


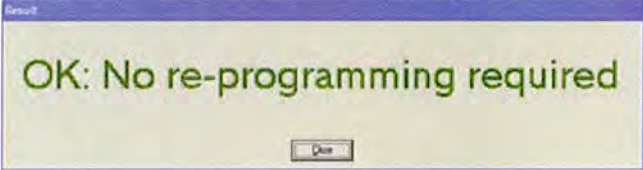
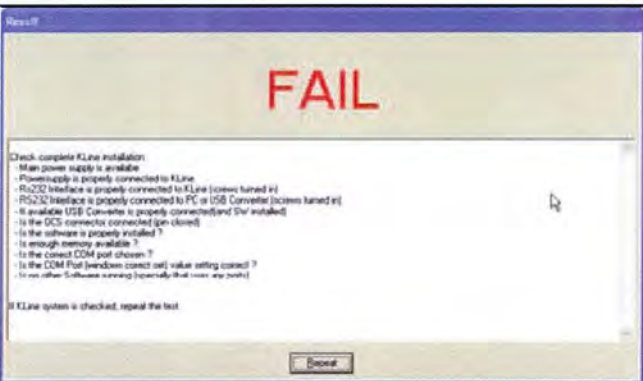





# SB-10032904-9909

Model: GRAND VITARA	Section: Restraints	TSB No. TS 05 01140
---------------------	---------------------	---------------------

19. When the process is finished, the progress window closes and one of the following result windows will open:

Result Window	Work Procedure
 <p>The screenshot shows a window titled 'Result' with a large green 'PASS' text in the center. Below the text is a small 'OK' button.</p>	<p>If the "PASS" window has opened, reprogramming was successful. Click the "OK" button and continue to the next step in the instructions.</p>
 <p>The screenshot shows a window titled 'Result' with large green text that reads 'OK: No re-programming required'. Below the text is a 'Close' button.</p>	<p>If the "OK: No reprogramming required" window has opened, there was no need to reprogram, likely due to the vehicle being previously reprogrammed, or it not falling within the affected VIN range. Continue to the next step in the instructions.</p>
 <p>The screenshot shows a window titled 'Result' with large red 'FAIL' text. Below the text is a checklist of items to check for K-Line system installation. At the bottom is a 'Repeat' button.</p>	<p>If the "FAIL" window shown to the left has opened, check reprogramming tools, connections, and PC setting by referring to the check list below. Click the "Repeat" button, and retry the reprogramming.</p> <p><b>Note: Reprogramming can be retried twice.</b></p>
 <p>The screenshot shows a window titled 'Result' with large red 'FAIL' text. Below the text is a message: 'End to fail. Replace the OCS. Please follow the Suzuki standard repair procedure.' At the bottom is a 'Close' button.</p>	<p>If the "FAIL" window shown to the left has opened, OCS reprogramming is impossible. Click the "Close" button and then replace the OCS/Seat Cushion Assembly referring to the Service Manual.</p>

### Check list

- Main power supply is available and properly connected to K-Line interface cable.
- RS232C Interface cable is properly connected to K-Line cable (screws tightened).
- RS232C Interface cable is properly connected to PC or USB Converter (screws turned in).
- If necessary RS232C - USB Converter is properly connected.
- If necessary USB driver is properly installed.
- OCS connector is properly connected.
- Correct COM port is used.
- No other software is running (specially that uses any port).

# SB-10032904-9909

Model: GRAND VITARA

Section: Restraints

TSB No. TS 05 01140

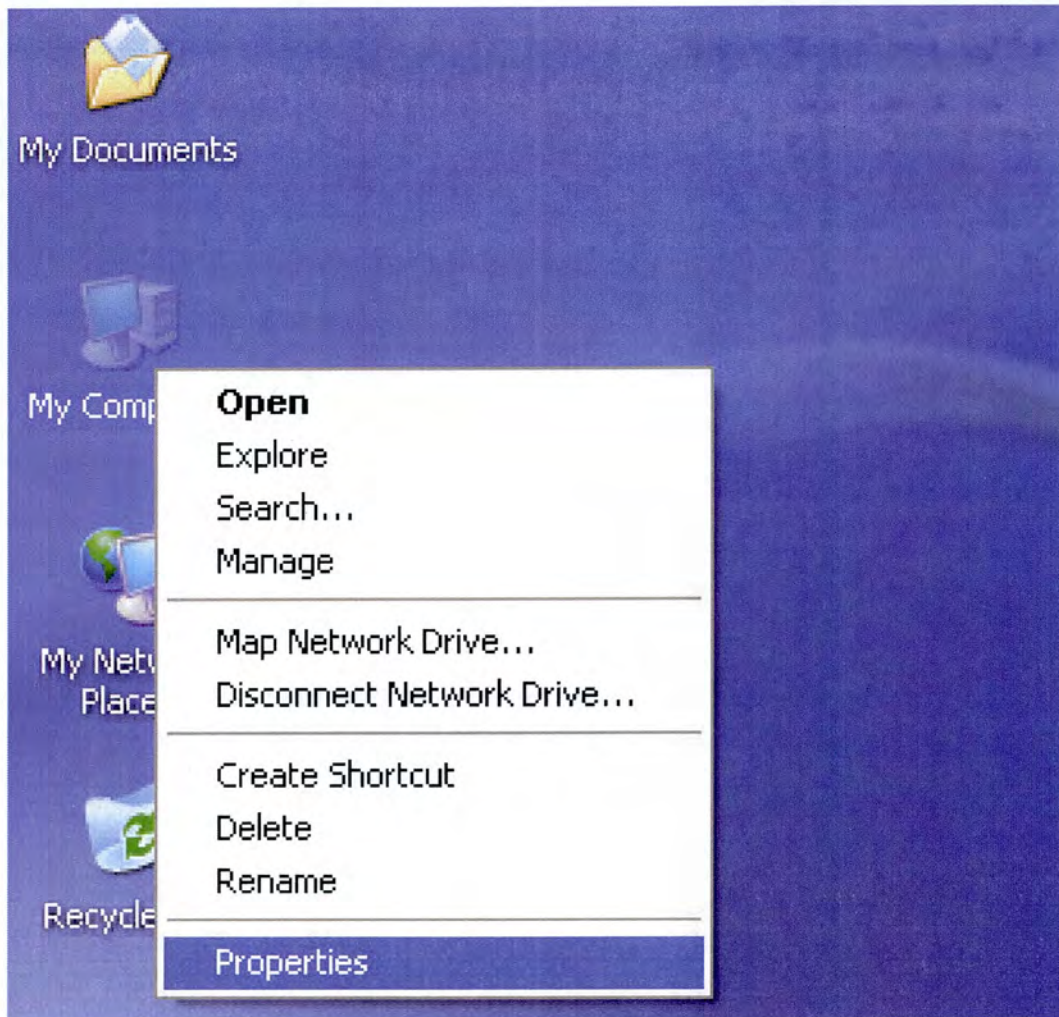
20. Disconnect the reprogramming tools from the vehicle starting with the female OCS connector under the seat cushion.
21. Reconnect the OCS female connector to the vehicle harness connector under the seat cushion.



22. Using a green marking pen (included in the OCM Reflash Kit), and put a green dot on the OCS female connector in an area to make it easily visible. This will indicate that the OCM reprogramming has been performed.
23. Connect the Suzuki SDT scan tool to the vehicle, check and clear any DTC(s). After clearing DTC(s), confirm there are no codes stored as current or history.
24. If no codes are present, power off the Suzuki SDT, turn the ignition switch off, and disconnect the Suzuki SDT from the DLC. The process is complete.


## COM Port Troubleshooting instructions

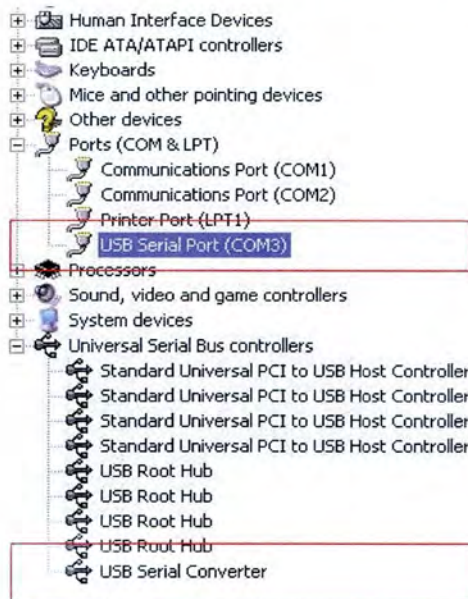
1. To check the installation and confirm the Com Port configuration, right click " My Computer", then click "Properties"



- From the “Hardware” tab, click on the “Device Manager” button



- The following chart should open on your computer screen, confirm that both of the items indicated in the red rectangle areas are present on your computer, and note the COM Port assigned to the “USB Serial Port”, (example:  USB Serial Port (COM3) , COM3) to be selected during the Reprogramming procedure



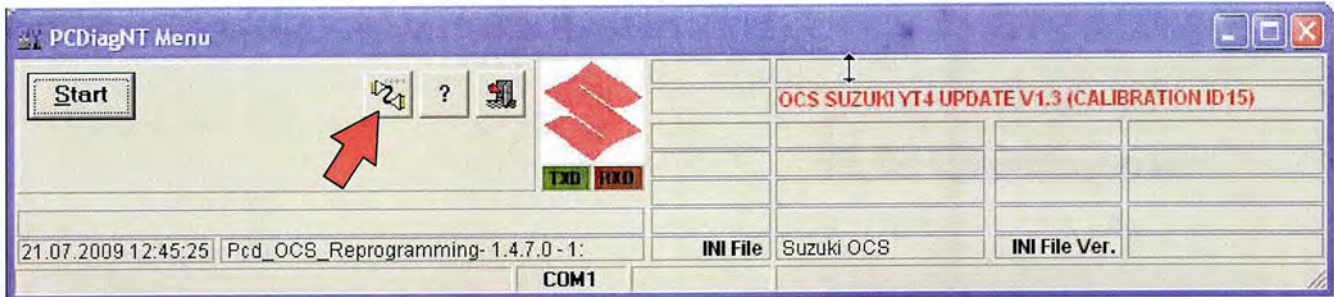
# SB-10032904-9909

Model: GRAND VITARA

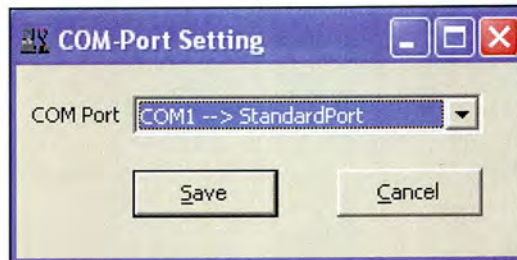
Section: Restraints

TSB No. TS 05 01140

- Once you have found the COM Port that the USB Serial Converter was assigned, you can change the setting by clicking the "Com Port Configuration Button" shown below.



- To change the com port, click on the "Com Port Configuration Button". Another small window will open and COM Port can be modified (COM1, COM2, etc.).



- After correctly changing the COM Port setting, go back to step 17 of the Reprogramming instructions.