



Service Bulletin

File in Section: -

Bulletin No.: PIP5151

Date: September, 2013

PRELIMINARY INFORMATION

Subject: Diagnostic Tip - 2010 through 2014 6.6L Duramax Fuel System Contamination Identification

Models: 2010 - 2014 Chevrolet Express, Silverado
2010 - 2014 GMC Savana, Sierra
Equipped with the 6.6L Duramax Diesel Engine RPO codes LGH and LML

The following diagnosis might be helpful if the vehicle exhibits the symptom(s) described in this PI.

Condition/Concern

A dealer may encounter a customer's concern of hard start, no start, rough running, low fuel pressure and/or DTCs P0087, P0088, P0191 and P128E. During inspection of the fuel system and its components, the dealer may find contamination. Below are examples of contamination that has been found in returned parts and what we believe to be the source of the contamination.



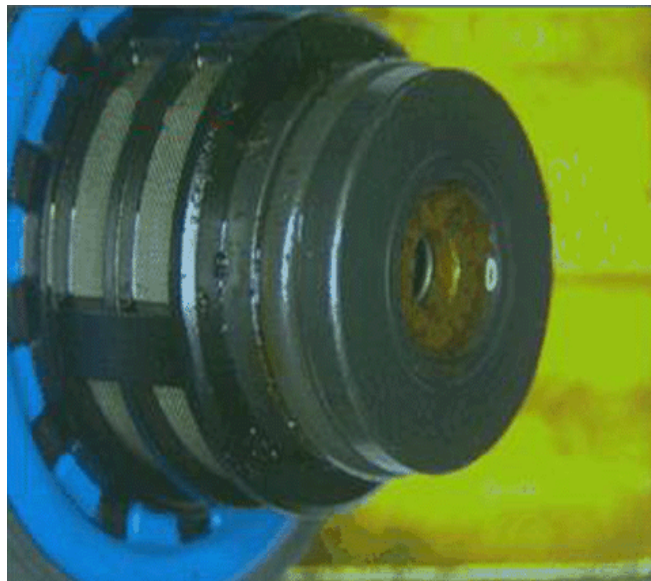
3605021

Fuel Pressure Regulator 1 Contaminated With Diesel Exhaust Fluid (DEF)



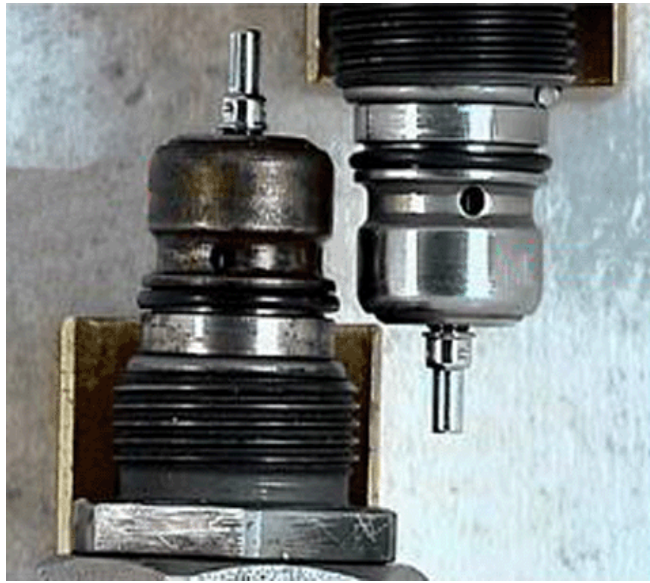
3605020

Fuel Pressure Regulator 1 Contaminated With DEF



3605019

Fuel Pressure Regulator 1 With Rust Due To Water Contamination



3605018

Fuel Pressure Regulator 2 With Rust (On Left) Due To Water Contamination



3605016

Fuel Pressure Regulator 2 With DEF Contamination

Recommendation/Instructions

If the above types of contamination are found, be sure to thoroughly inspect, clean and flush the fuel system. Refer to SI for fuel system cleaning procedures.

Please follow this diagnostic or repair process thoroughly and complete each step. If the condition exhibited is resolved without completing every step, the remaining steps do not need to be performed.