



Service Bulletin

File in Section: -

Bulletin No.: PIC5521A

Date: July, 2013

PRELIMINARY INFORMATION

Subject: Front Seat Cage Nut Spins - Unable To Remove Bolt

Models: 2010 - 2014 Chevrolet Camaro

This PI was superseded to update model years and add warranty information. Please discard PIC5521.

The following diagnosis might be helpful if the vehicle exhibits the symptom(s) described in this PI.

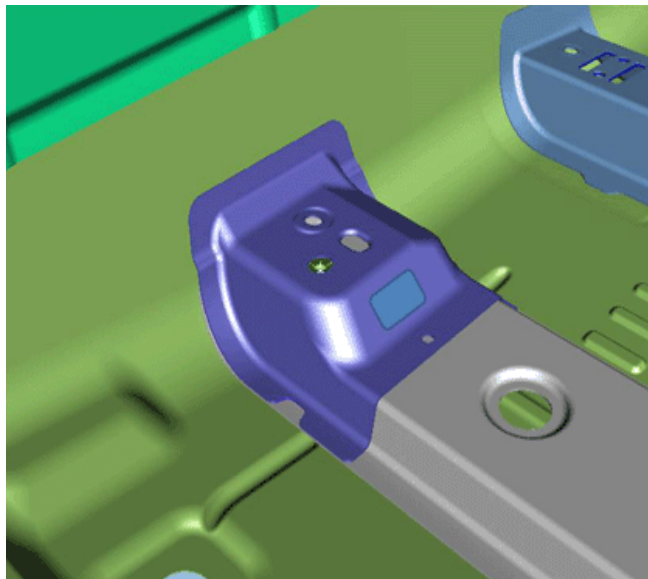
Condition/Concern

A technician may experience difficulty removing a seat and state the bolt is spinning but not coming out of the floor pan. This could be caused by a cage nut that broke loose from the weld in the floor pan during removal of the bolt.

Recommendation/Instructions

It is suggested that the Body Shop perform these repairs.

1. To remove the seat you will need to cut or drill the head of the bolt off.
2. Remove the seat following published procedures and re-position the carpet as needed to allow the remainder of the steps to be completed.
3. Cut a square hole 45 mm (W) X 35 mm (H) in the Seat Anchor Bracket containing the loose cage nut, as illustrated below.



2696605

4. Remove the cage nut from the Seat Anchor Bracket and, using a vise and pliers, remove the remainder of the bolt from the nut. Clean the threads of the nut as necessary.
5. Drill two 5mm holes next to the bolt hole in the Seat Anchor Bracket. These holes should be 180 degrees opposite of each other. This will allow the nut to be tack welded back in place.

Important: It is critical that the nut be centered in the hole. If it is off to either side of the car, this will cause the seat track to bind.

Note: Use a long bolt or similar tool to hold the nut against the bottom of the bracket in the next step.

6. Holding the nut in the proper location, place two tack welds in the previously drilled holes to retain the nut to the bracket.
7. Clean the welds to allow proper fit of the seat adjuster to the floor pan.
8. Apply the anti-corrosion materials to the repair area and paint as necessary.

Warranty Information

For vehicles repaired under warranty, use the following in addition to well documented straight time.

Labor Operation	Description	Labor Time
7020180	Driver or Passenger Seat Cushion Frame Replacement	Use Published Labor Operation Time *
* Note: For additional labor involved with this repair use Other Labor Hours (OLH).		

Please follow this diagnostic or repair process thoroughly and complete each step. If the condition exhibited is resolved without completing every step, the remaining steps do not need to be performed.