

Technical Bulletin

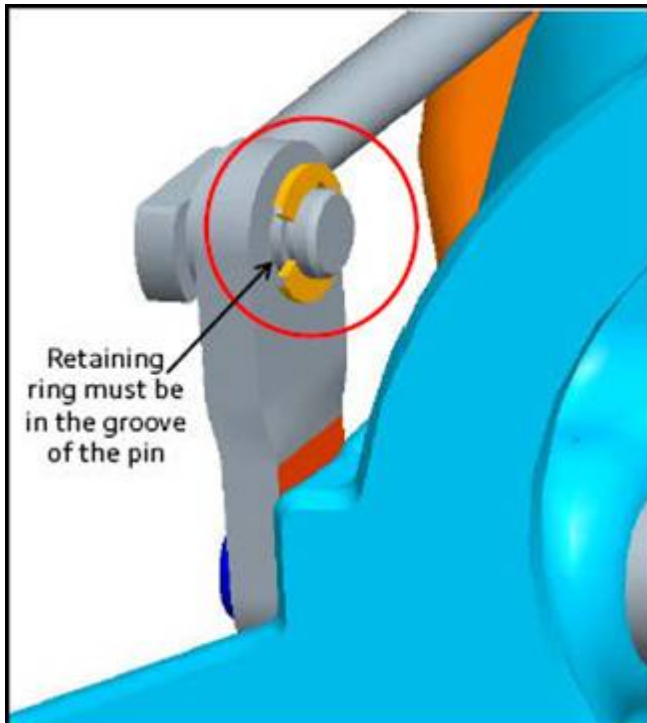
Model(s)	Year(s)	Eng. Code(s)	Trans. Code(s)	VIN Range From	VIN Range To
All	2008-2014	2.0L (CBFA, CCTA)	All	All	All

Condition

21 13 02 December 3, 2013 **2024061** Supersedes T.B. V211202 dated August 27, 2011 to include MY 2014 vehicle applicability.

Rattling Noises from Engine Compartment Area or Exhaust System

Customers may complain of a rattling noise from engine or exhaust area while accelerating from 1800-3000 RPM. In order to complete proper diagnosis and ensure that the noise is coming from the turbocharger, use the following procedure:



1. Ensure that there is no physical internal or external damage to the turbocharger. If damage is observed, continue diagnosis and repair as necessary. If no damage is observed, proceed to step 2.

Technical Bulletin

2. Test drive the vehicle to duplicate and familiarize yourself with the noise. Noise can typically be duplicated by driving up a moderate incline, beginning at 35 mph (56 kph) in 4th gear (manual or automatic transmission) and accelerating through the RPM range of 1800-3000 RPM under moderate to heavy throttle. Obey all local traffic laws.

 **Note:**

Use caution when diagnosing the origin of the noise. Although the noise may be originating from the turbocharger, it can be amplified through resonance to the catalytic converter and be misdiagnosed as a loud converter.

3. Once you have confirmed and familiarized yourself with the noise, attach retaining clip Part No. 06J145220A (figure 1).



Figure 1

Technical Background

Because of exhaust gas pulsations the wastegate flap and actuator rod vibrate at the introduction of boost pressure

Production Solution

No improvements made to production.

Technical Bulletin

Service

Procedure 1



WARNING:

Engine, Turbocharger and Exhaust System are extremely HOT !!!

Observe safety precautions found in Group 21 Turbocharger, G-Charger in ElsaWeb.

Care must be taken when working around these areas or severe injury may occur.

- Secure and raise vehicle for access to rear of turbocharger.
- Attach tension clip as shown in figures 2, 3, 4, 5 and 6.
- Ensure rod and clip travel without restriction.



Note:

Clip expansion should not exceed 14mm or damage to clip will occur. Reference figure 3 area 1 is spread to 10.5mm. Refer to Fig. 4 and 5 for proper clip position.

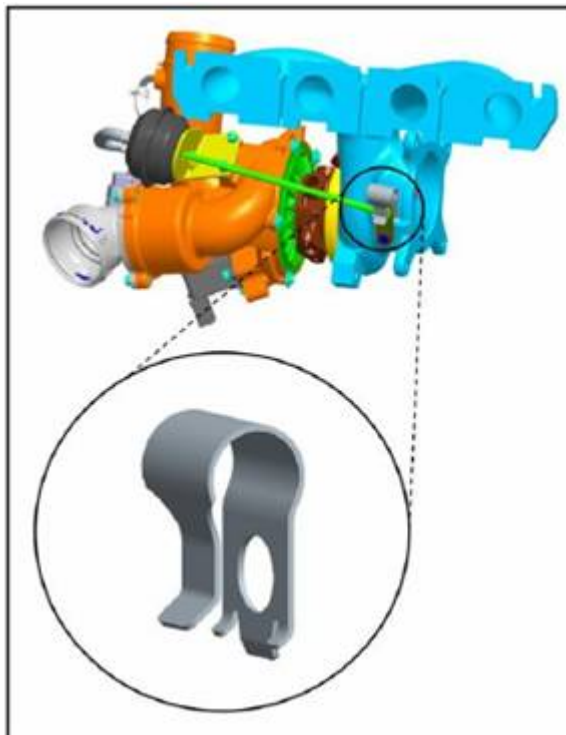


Figure 2

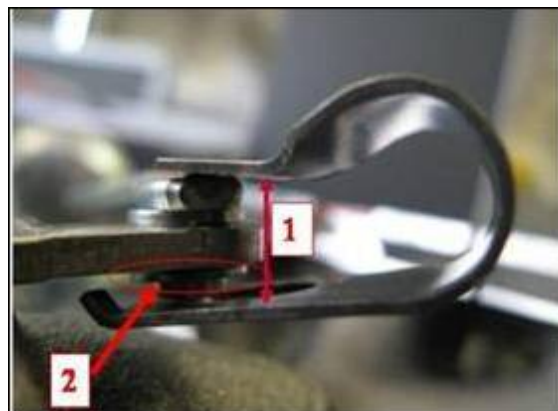


Figure 3

1. 10.5mm, not to exceed 14mm.
2. Clip capture area, ensure clip fits in groove as seen in figure 6.

Technical Bulletin



Figure 4

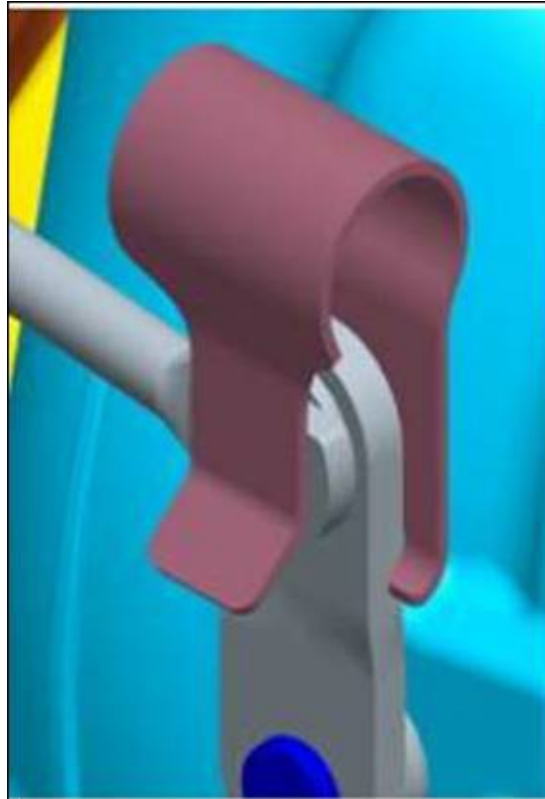


Figure 5

Technical Bulletin

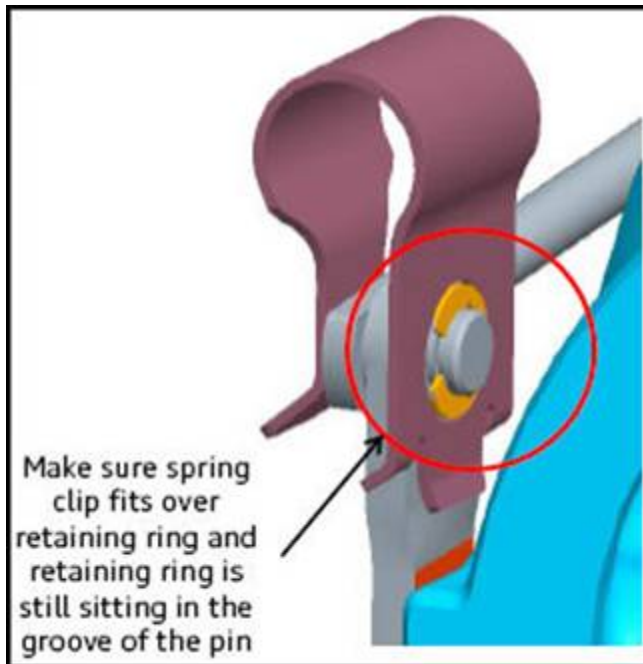


Figure 6

- Test drive vehicle to ensure repair.

If after attaching clip to the actuator rod, the noise has not changed, continue diagnosis and repair as necessary.

 **Note:**

Leave clip installed as it should not be reused due to stretching during installation.

Technical Bulletin

Procedure 2 - 4Motion

- Raise and support vehicle.
- Remove lower engine cover.
- Disconnect right front stabilizer bar link, see Repair Group 40 in ElsaWeb.
- Remove right front drive axle, see Repair Group 40 in ElsaWeb.



- Remove front differential support stud bolts.



- Remove turbocharger lower support bracket.

 **Note:**

Due to thread locking compound, the use of heat may be necessary to loosen the turbocharger to support bracket bolt.

Technical Bulletin



- Install clip, part number 06J145220A following the guide lines listed in procedure 1.
- Reassemble vehicle.
- Test drive vehicle to ensure repair.

If after attaching clip to the actuator rod, the noise has not changed, continue diagnosis and repair as necessary.

 **Note:**

Leave clip installed as it should not be reused due to stretching during installation.



Technical Bulletin

Warranty

To determine if this procedure is covered under Warranty, always refer to the Warranty Policies and Procedures Manual ¹⁾					
Model(s)	Year(s)	Eng. Code(s)	Trans. Code(s)	VIN Range From	VIN Range To
All	2008-2014	2.0L (CBFA, CCTA)	All	All	All
SAGA Coding					
Claim Type:	Use applicable Claim Type ¹⁾				
Service Number:	Damage Code	HST		Damage Location (Depends on Service No.)	
2158	0020	--		Use applicable when indicated in ElsaWeb (L/R)	
Parts Manufacturer	Golf, Eos, CC, Passat, Passat Wagon, Tiguan				WVO ²⁾
	Jetta, Jetta Wagon, Beetle				3ME ²⁾
Non 4Motion					
Labor Operation ³⁾: Install retaining clip			21584199 = 40 TU max A-time		
4Motion					
Labor Operation ³⁾: Remove and Install right front drive axle			40411900 = 90 TU		
Labor Operation ³⁾: Install retaining clip			21584199 = 40 TU max A-time		
Causal Part:			06J145220A		
Diagnostic Time ⁴⁾					
Labor Operation ³⁾:GFF Time expenditure		01500000 = XX TU max.		NO	



Technical Bulletin

Road Test	01210002 = 10 T.U. 01210004 = 10 T.U.	YES
Technical Diagnosis	01320000 = 00 TU	NO
Claim Comment: Input "As per Technical Bulletin 2024061" in comment section of Warranty Claim.		
1) Vehicle may be outside any Warranty in which case this Technical Bulletin is informational only 2) Code per warranty vendor code policy. 3) Labor Time Units (TUs) are subject to change with ELSA updates. 4) Documentation required per Warranty Policy Procedures Manual.		

Required Parts and Tools

Part Description	Part No:	Quantity
Clip	06J145220A	1

No Special Tools required.

Additional Information

All part and service references provided in this Technical Bulletin are subject to change and/or removal. Always check with your Parts Dept. and Repair Manuals for the latest information.