

Technical Service Bulletin



01 MIL on (DTCs P2015, P2020)

01 13 50 2030192/2 December 20, 2013. Supersedes Technical Service Bulletin Group 01 number 12-55 dated October 22, 2012 for reasons listed below.

Model(s)	Year	VIN Range	Vehicle-Specific Equipment
S5	2008	000001 - 999999	4.2 FSI
S5	2009	000001 - 025001	4.2 FSI
A6	2007-09	000001 - 999999	4.2 FSI
S6	2007-11	000001 - 999999	5.2 FSI
A8	2007 - 2008	000001 - 999999	4.2 FSI
A8	2009	000001 -009301	4.2 FSI
S8	2007-09	000001 - 999999	5.2 FSI
Q7	2007 - 2008	000001 - 999999	4.2 FSI
Q7	2009	000001 - 025001	4.2 FSI

Condition

REVISION HISTORY		
Revision	Date	Purpose
2	-	Revised header data (Added customer codes; added DTCs) Revised <i>Service</i> (Clarified steps) Revised <i>Warranty</i> (Corrected TUs)
1	10/22/2012	Initial publication

- MIL on.
- The following DTCs are stored in the engine control module (ECM), J623 (address word 01):
 - **DTC P2015:** Intake Manifold Runner Position Sensor/Switch Circuit Range/Performance
 - **DTC P2020:** Intake Manifold Runner Position Sensor/Switch Circuit Bank 2 Range/Performance
- Engine may have reduced power without significant loss of power or stalling.

Technical Background

A deformed oil seal behind the potentiometer (Figure 1) causes a linkage of the intake manifold flap adjustment to stick, which sets the DTCs.

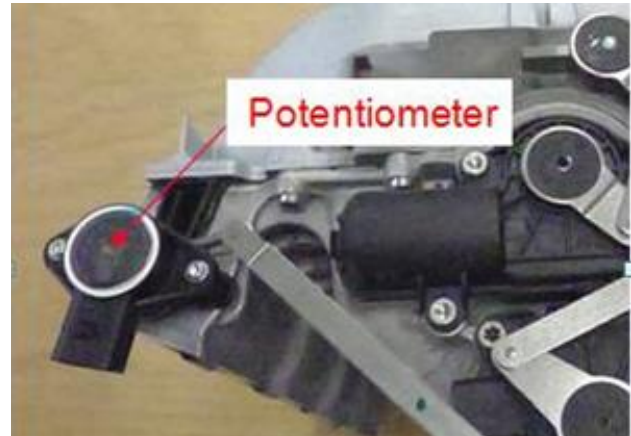


Figure 1. Potentiometer.

When the potentiometer is removed, the oil seal can be seen (Figure 2).

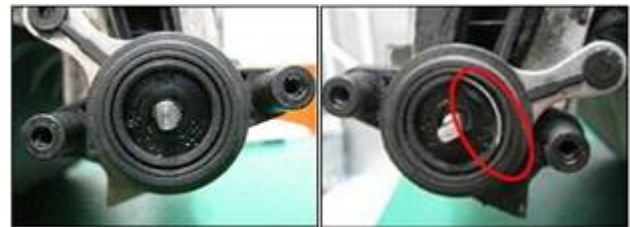


Figure 2. After the potentiometer is removed, the oil seal can be seen. The image on the left shows a correct oil seal and the image on the right shows a deformed oil seal.

Production Solution

Not applicable.

Service

1. Check the vehicle service history to determine if the improved “B” suffix V157 intake flap motor has been installed:
 - If the motor has already been installed, proceed with step 2.
 - If the motor has not been installed, install it before proceeding to step 2.

2. To avoid sticking linkage in the future, remove the seal spring before installation (Figure 3). Use your finger to remove the spring. Screwdrivers or other tools may damage the sealing lip.



Figure 3. The image on the left shows the correct way to remove the spring. The image on the right shows the spring after it has been removed.

3. Remove the potentiometer by removing the two M4x14 bolts (Figure 4), then check the potentiometer and its flange for damage.

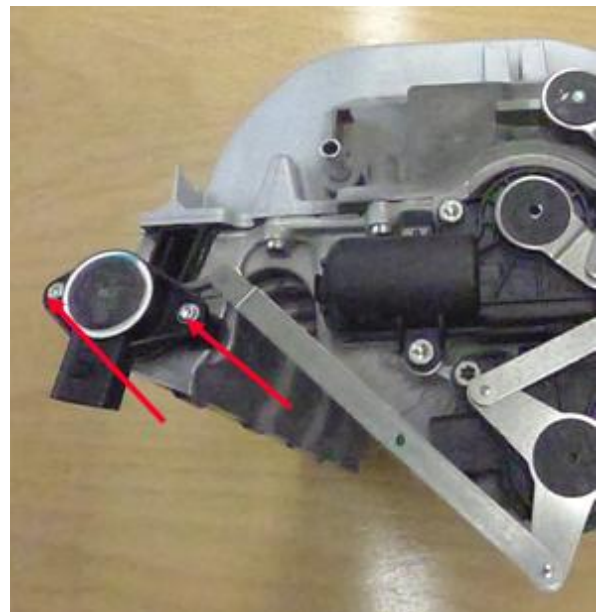


Figure 4. Two M4x14 bolts to be removed.

4. Use a screwdriver to gently remove the seal ring by pushing the screwdriver under the seal (Figure 5).



Figure 5. Removing the seal with a screwdriver.

5. Clean the potentiometer seal mounting area, then lightly oil the surface with 10W40 motor oil.
6. Insert the seal. The open side of the seal faces the potentiometer. Use your fingers to press the seal ring into the seal mount firmly. Ensure that the seal is fully inserted (Figure 6).

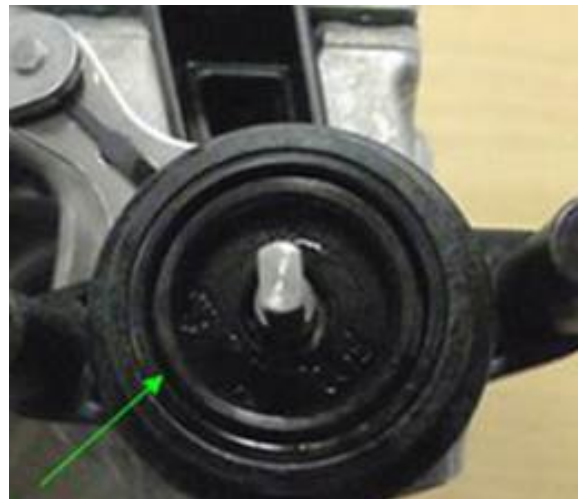


Figure 6. Correctly-inserted seal.

7. Lightly oil the potentiometer before installation. Additionally, apply oil the contact surfaces of the sensor (Figure 7) and inner ring of the lip seal ring



Figure 7. Lightly-oiled sensor.

8. Fit the potentiometer then fit the sensor with a light turning movement. Attach it with 2 bolts (M4X14), tightening torque 1.7Nm + 0.2 Nm (Figure 8).

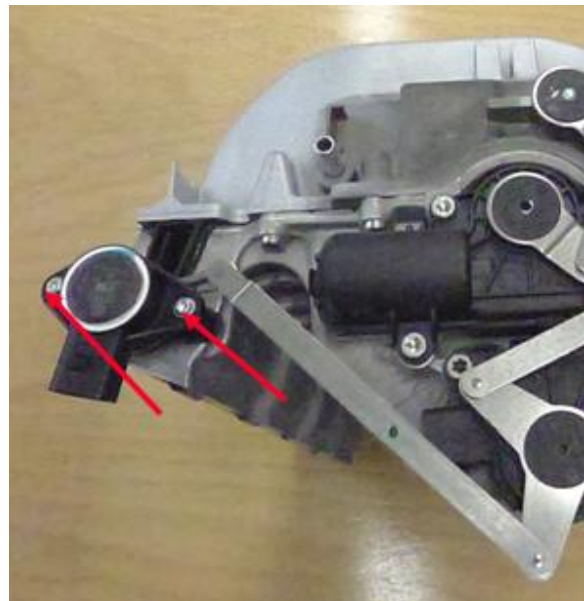


Figure 8. Two bolts to be tightened.

9. After linkage is reassembled, run the intake manifold runner flap adaptation in Guided Functions.

Technical Service Bulletin



Warranty

Claim Type:	Use applicable claim type. If vehicle is outside any warranty, this Technical Service Bulletin is informational only.		
Service Number:	2465		
Damage Code:	0040		
Labor Operations:	For all vehicles:		
	Modify seal ring + remove and reinstall seals	2465 3199	10 TU
	For A6:		
	Variable intake manifold flap potentiometers remove + install	2465 2019	40 TU
	Air flap drive unit remove + replace (only if improved " B" suffix part was not already installed)	2490 1919	70 TU
	For A8:		
	Variable intake manifold flap potentiometers remove + install	2465 2019	40 TU
	Air flap drive unit remove + replace (only if improved " B" suffix part was not already installed)	2490 1919	70 TU
	For Q7:		
	Variable intake manifold flap potentiometers remove + install	2465 2019	40 TU
	Air flap drive unit remove + replace (only if improved " B" suffix part was not already installed)	2490 1919	40 TU
	For S5:		
	Variable intake manifold flap potentiometers remove + install	2465 2069	20 TU
	Air flap drive unit remove + replace (only if improved " B" suffix part was not already installed)	2490 1969	20 TU
Intake manifold remove + reinstall	2447 1919	190 TU	

Technical Service Bulletin



	Fuel system pressure decrease	2003 0069	10 TU
	For S6:		
	Variable intake manifold flap potentiometers remove + install	2465 1973	10 TU
	Air flap drive unit remove + replace (only if improved " B" suffix part was not already installed)	2490 1973	10 TU
	Radiator remove + reinstall	1970 1923	250 TU
	For S8:		
	Variable intake manifold flap potentiometers remove + install	2465 1973	10 TU
	Air flap drive unit remove + replace (only if improved " B" suffix part was not already installed)	2490 1973	10 TU
	Radiator remove + reinstall	1970 1923	250 TU
Diagnostic Time:	GFF	0150 0000	20 TU
	Road test prior to service procedure	No allowance	0 TU
	Road test after service procedure	0121 0004	10 TU
	Technical diagnosis at dealer's discretion (Refer to Section 2.2.1.2 and Audi Warranty Online for DADP allowance details)		
Claim Comment:	As per TSB #2030192/2		

All warranty claims submitted for payment must be in accordance with the *Audi Warranty Policies and Procedures Manual*. Claims are subject to review or audit by Audi Warranty.

Required Parts and Tools

Part Number	Part Description	Quantity
036133696C	Potentiometer seal	2
Per ETKA	Intake manifold gaskets (For S5)	2
079129086B	V8 FSI – V157 intake flap motor (lower) (replace only if improved “ B” suffix part was not already installed)	1
07L129086B	V10 FSI – V157 intake flap motor (lower) (replace only if improved “ B” suffix part was not already installed)	1

Additional Information

All parts and service references provided in this TSB (2030192) are subject to change and/or removal. Always check with your Parts Department and service manuals for the latest information.