

Technical Service Bulletin



17 Electronic oil consumption measurement - Repair Authorization 3.0T MY 2013/14

17 13 44 2035463/1 October 22, 2013.

Model(s)	Year	VIN Range	Vehicle-Specific Equipment
A4, A5, A5 Cab, A6, A7, A8, Q5, Q7	2013 - 2014	All	3.0T engine

Condition

If there is a customer complaint about oil consumption, follow the procedure below.

Technical Background

In order to provide effective lubrication and cooling of internal engine components, all internal combustion engines consume a certain amount of engine oil. Oil consumption varies from engine to engine, and may change significantly over the life of the engine. Typically, engines with specified break-in periods consume more oil during the break-in period, and the oil consumption will stabilize after the break-in period. Refer to the *Owner's Manual* for specific break-in procedures.

Under normal conditions, the rate of oil consumption depends on the quality and viscosity of the oil, the RPM at which the engine is operated, and the ambient temperature and road conditions. Additional factors include the amount of oil dilution from water condensation or fuel residue and the oxidation level of the oil.

Utilizing the advanced sensor technology integrated in models equipped with the 3.0 TFSI engine, it is possible to measure oil consumption electronically via a Guided Function test plan.

The advantages of an electronic measurement are:

- No engine oil required (only for top-off).
- No hoist required.
- Increased accuracy.
- No manual paperwork (all information stored in GFF diagnostic log).



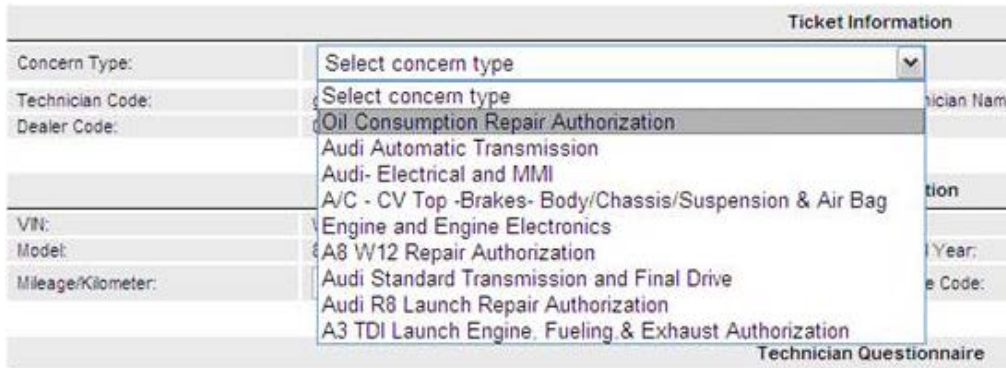
Tip: If the electronic oil consumption test is not available for this model, perform the test with the conventional scale/oil weighing method. See TSB 2018550 for instructions for the conventional scale/oil weighing method.

Production Solution

Not applicable.

Service

1. If the vehicle is within Warranty, you *must* obtain authorization from the Audi Technical Assistance Center before proceeding to Part 1 of the test.
2. When creating a TAC ticket, in the field *Concern Type*, select *Oil Consumption Repair Authorization*, as shown below (Figure 1).



The screenshot shows a 'Ticket Information' form. The 'Concern Type' dropdown menu is open, displaying a list of options. The option 'Oil Consumption Repair Authorization' is highlighted. Other options include 'Audi Automatic Transmission', 'Audi- Electrical and MMI', 'A/C - CV Top -Brakes- Body/Chassis/Suspension & Air Bag', 'Engine and Engine Electronics', 'A8 W12 Repair Authorization', 'Audi Standard Transmission and Final Drive', 'Audi R8 Launch Repair Authorization', and 'A3 TDI Launch Engine Fueling & Exhaust Authorization'. The form also includes fields for 'Technician Code', 'Dealer Code', 'VIN', 'Model', and 'Mileage/Kilometer'.

Figure 1. Oil Consumption Repair Authorization.

Start oil consumption measurement, Part 1

1. Park vehicle on a level surface, Guided Function test plan will *not* continue if vehicle tilted is more than 0.5 degrees (*side to side and front to rear*).
2. Right click *01-Engine Electronics* >> select *Guided Functions* >> *01 – Oil consumption measurement (electronic m., idle)*, as shown below (Figure 2).

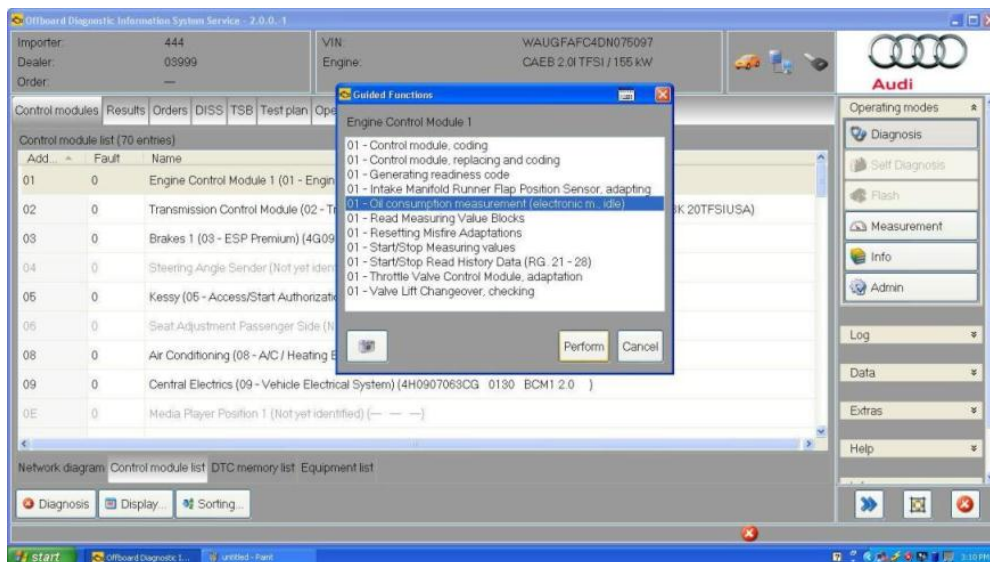


Figure 2. 01 – Oil consumption measurement (electronic measurement idle).

3. Follow the test plan, *Start oil consumption measurement*, and observe all notes and cautions.



Tip: Attach the diagnostic log to the TAC contact and to the repair order.

4. Advise the customer to schedule an appointment at his or her convenience for the evaluation measurement (part 2) after 630 miles (1,000 km) have passed. If the low oil level warning light comes on before the mileage reached, the test is finished; the vehicle must be taken to the dealership for Part 2 of the Oil Consumption Test, regardless of the miles accumulated. The customer should *not* add any oil.

Evaluate measurement (following road test), Part 2

1. When the customer returns the vehicle to the dealership, perform Part 2 *Evaluate measurement of the Oil Consumption Test*.
2. Contact Audi Technical Assistance Center (TAC) with all test results.
3. You *must* attach both the GFF log and the oil measurement test sheet to the TAC ticket prior to contacting a TAC consultant.

Technical Service Bulletin



Warranty

Only one oil consumption test will be reimbursed under Warranty within the next 25,000 miles (40,000 km).



Note:

Oil measurement plan must be performed independently. Time for additional tasks performed via GFF should not be included in oil measurement time and is subject to removal.

Claim Type:	Use applicable claim type. If vehicle is outside any warranty, this Technical Service Bulletin is informational only.		
Service Number:	1716		
Damage Code:	0010		
Labor Operations:	Oil consumption measurement, Part 1 (If using electronic test)	1716 0199	Time on GFF diagnostic log (Max 60 TU)
	Oil consumption measurement, Part 2 (If using electronic test)	1716 0299	Time on GFF diagnostic log (Max 40 TU)
	Oil consumption measurement, Part 1 (If using scale weighing method)	1716 0199	90 TU
	Oil consumption measurement, Part 2 (If using scale weighing method)	1716 0299	60 TU
Diagnostic Time:	GFF – Checking and clearing fault codes included in existing labor operations	0150 0000 No allowance	0 TU
	Road test prior to service procedure	No allowance	0 TU
	Road test after service procedure	No allowance	0 TU
	Technical diagnosis at dealer's discretion (Refer to Section 2.2.1.2 and Audi Warranty Online for DADP allowance details)		
Claim Comment:	As per TSB #2035463/1		

All warranty claims submitted for payment must be in accordance with the *Audi Warranty Policies and Procedures Manual*. Claims are subject to review or audit by Audi Warranty.



Required Parts and Tools

Required Tool	Tool number
Dipstick tool	T40178
VAS Tester	N/A

Additional Information

All parts and service references provided in this TSB (2035463) are subject to change and/or removal. Always check with your Parts Department and service manuals for the latest information.