

Contents

- Item 1. Exhaust Butterfly Cables and Motor Assembly - Daytona 675 and Daytona 675R from VIN 564948
- Item 2. Headstock Washer and Bearing Adjustment - Tiger Sport
- Item 3. Second and Sixth Output Gears - Speed Triple 1050, Speed Triple 1050 R, Sprint GT, Tiger 1050 and Tiger Sport
- Item 4. Coolant Inlet Cover - Tiger 800, Tiger 800 with ABS, Tiger 800XC and Tiger 800XC with ABS
- Item 5. Ignition Coil Fixings - Rocket III Touring and Rocket III Roadster
- Item 6. Tyre Pressure Monitor - All Models
- Item 7. Brake Hose Elbow - America and Speedmaster
- Item 8. Throttle Assembly - All Models with Temporary Handlebars
- Item 9. Transition Piece - Tiger 800 and Tiger 800XC from engine number 617517
- Item 10. ABS Modulator - Speed Triple 1050 with ABS up to VIN 499000
- Item 11. Sprocket Cover Fixings M6 x 16 mm - Tiger 1050 from VIN 595279, Speed Triple 1050 from VIN 595279 and Tiger Sport
- Item 12. Alternator - Street Triple models from VIN 560477
- Item 13. Selector Drum and Neutral Light Switch Parts Kits - Speed Triple 1050, Speed Triple 1050 R from engine number 539023, Sprint GT from engine number 536533, Tiger 1050 ABS from engine number 536533 and Tiger Sport from engine number 569533
- Item 14. Alternator - Tiger 800, Tiger 800 ABS and Tiger 800XC ABS
- Item 15. Instrument Fixings - Rocket III Touring and Rocket III Touring ABS
- Item 16. Windscreen Adjustment Mechanism Spares Assemblies - Trophy and Trophy SE
- Item 17. Tyre Noise - Tiger Explorer and Tiger Explorer XC
- Item 18. Service Manual Correction (Brazil ONLY) - Daytona 675 and Daytona 675R from VIN 564948, Street Triple and Street Triple R from VIN 560477

Item 1.

Description: Exhaust Butterfly Cables and Motor Assembly
Models affected: Daytona 675 and Daytona 675R from VIN 564948

Triumph has begun to receive an increase in warranty claims for exhaust butterfly cables and motor assemblies fitted to the above models.

During inspection, it has been recognised that the components are serviceable and no faults have been found.

Therefore we seek to remind dealers to refer to Technical News 142 dated March 2013 (Item 12) and follow the revised adjustment procedure prior to replacing any components.

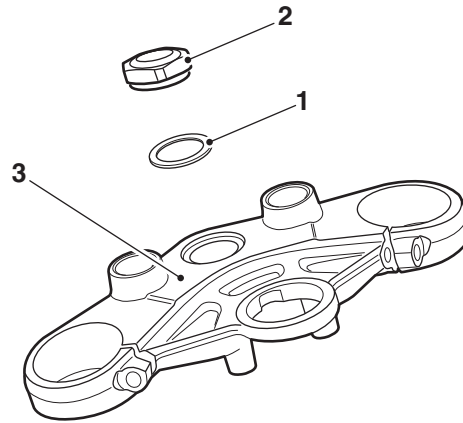
Please mark your copy of the Service Manual with this information.

Item 2.

Description: **Headstock Washer and Bearing Adjustment**

Models affected: **Tiger Sport**

A washer (part number T3551551) has been introduced between the top yoke and the headstock top nut on the above model.



- 1. Washer
- 2. Headstock top nut
- 3. Top yoke

At the same time, the method for adjusting the headstock bearings has also changed.

Headstock Bearing Adjustment

The adjustment procedure of the headstock bearings in the Service Manual requires updating as described below:

Adjustment

1. Remove the top yoke, as described in the Service Manual.

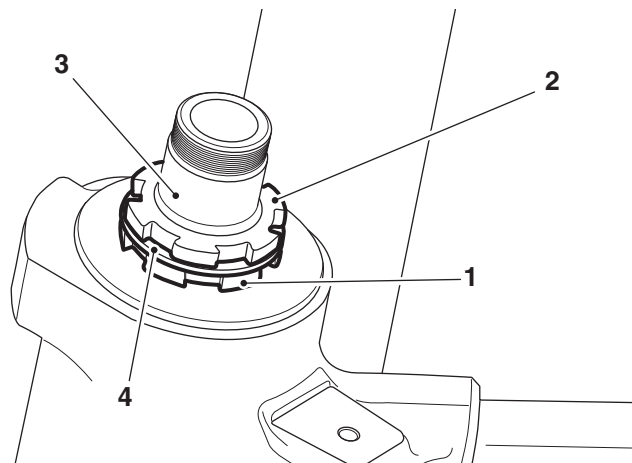
Adjust the bearing free-play as follows, using the relevant tool described in the Service Manual:

Warning

It is essential that the adjuster nut is not over-tightened. If the adjuster is over-tightened it will cause a pre-load on the headstock bearings. This will introduce tight steering, which could cause loss of control and an accident.

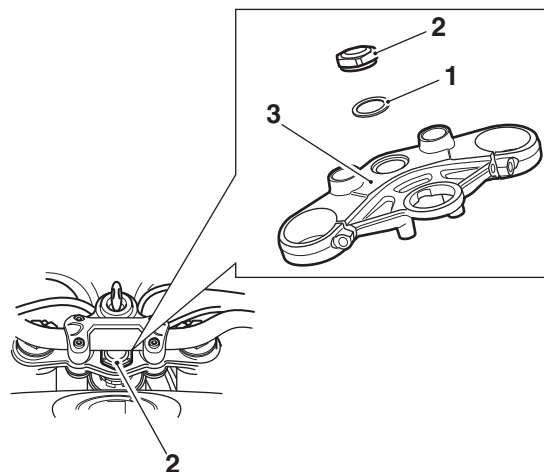
- Remove the lock nut, tab washer and adjuster nut.

- Thoroughly clean the threads on the steering stem.



1. Adjuster nut
2. Lock nut
3. Stem threads
4. Tab washer

- Refit the adjuster nut and tighten to **40 Nm**.
 - Slacken the adjuster nut, then tighten to **8 Nm**.
 - Refit the tab washer and lock nut.
 - Hold the adjuster nut in position while tightening the lock nut to **40 Nm**.
2. Refit the top yoke to the forks.
 3. Fit the washer and the headstock top nut. Tighten the top nut to **90 Nm**.



1. Washer
2. Headstock top nut
3. Top yoke

Please mark your copy of the Service Manual with this information.

Item 3.

Description: Second and Sixth Output Gears

Models affected: Speed Triple 1050, Speed Triple 1050 R, Sprint GT, Tiger 1050 and Tiger Sport

The second and sixth output gears have changed on the above models from the engine numbers listed in the table below.

If for any reason the second or sixth output gears are replaced, a spares kit is available as the two gears must always be replaced as a pair.

The table below identifies the model range and engine number that require the spares kit.

Model	From Engine Number	To Engine Number	Spares Kit T1186777		
			Description	Part Number	Quantity
Speed Triple 1050	539023	598091	Second output gear	T1187812	1
Speed Triple 1050 R	520032	598091			
Sprint GT	536533	598091			
Tiger 1050	536533	598091	Sixth output gear	T1187817	1
Tiger Sport	569553	598091			

For motorcycles that are not listed in the table above parts can be replaced as required.

When ordering replacement parts, always refer to the EPC.

Please mark your copy of the Service Manual with this information.

Item 4.

Description: Coolant Inlet Cover

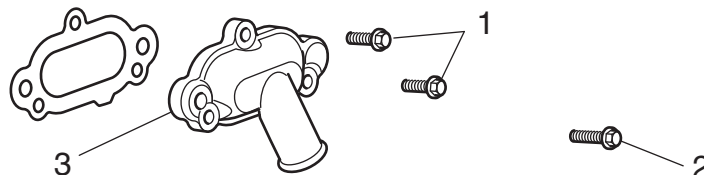
Models affected: Tiger 800, Tiger 800 with ABS, Tiger 800XC and Tiger 800XC with ABS

The torque figures for the coolant inlet cover on the above models have changed as follows:

- **8 Nm** for the two M6 x 20 mm fixings
- **9 Nm** for the M6 x 25 mm fixing.

Note:

- **Models already in service need not be re-tightened unless the fixings have been loosened or removed.**



1. Fixing, M6 x 20 mm

2. Fixing, M6 x 25 mm

3. Coolant inlet cover

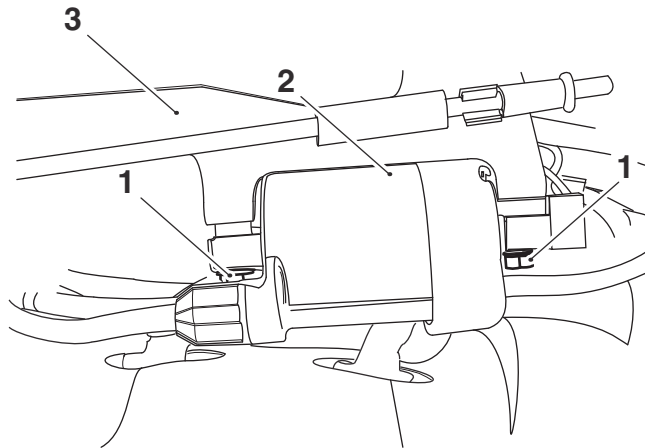
Please mark your copy of the Service Manual with this information.

Item 5.

Description: Ignition Coil Fixings
Models affected: Rocket III Touring and Rocket III Roadster

The torque figure for the fixings securing the ignition coils to the mounting bracket has changed to **9 Nm** on the above models.

Models already in service need not be re-tightened unless the bolts have been loosened or removed.



- 1. Fixings
- 2. Ignition coil (front shown)
- 3. Bracket

Please mark your copy of the Service Manual with this information.

Item 6.

Description: Tyre Pressure Monitor
Models affected: All Models

We have been made aware that in certain circumstances puncture repair fluid has been used to repair punctures on motorcycles with Tyre Pressure Monitoring System (TPMS) fitted.

If for any reason puncture repair fluid comes into contact with a TPMS pressure sensor and the sensor's orifice becomes blocked, the warning light on the instrument panel will become illuminated indicating a TPMS sensor fault. Triumph will not allow warranty claims for damaged TPMS sensors where there are signs of puncture repair fluid being used. We also remind dealers that the only replacement TPMS sensors approved for use are those obtained from Triumph Genuine Parts. Use of any others will invalidate the motorcycle warranty.

The following caution will be added to future Owner's Handbooks.

 **Caution**

Do not use puncture repair fluid or any other item likely to obstruct air flow to the TPMS sensor's orifices. Any blockage to the air pressure orifice of the TPMS sensor during operation will cause the sensor to become blocked, causing irreparable damage to the TPMS sensor assembly. Damage caused by the use of puncture repair fluid or incorrect maintenance is not considered a manufacturing defect and will not be covered under warranty. Always have your tyres fitted by your authorised Triumph dealer and inform them that tyre pressure sensors are fitted to the wheels.

Please mark your copy of the Service Manual with this information.

Item 7.

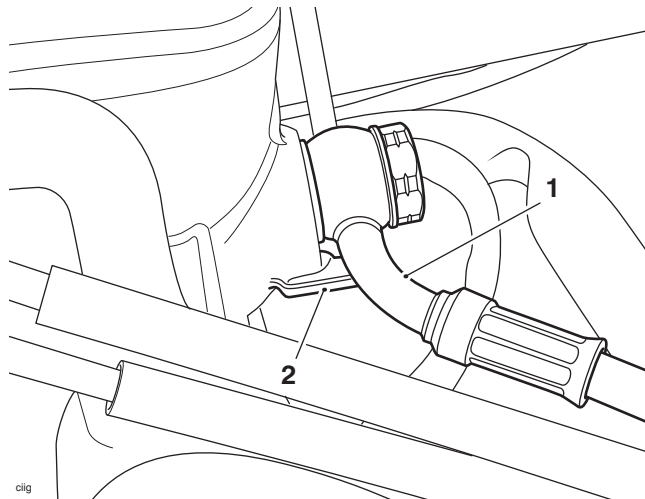
Description: Brake Hose Elbow

Models affected: America and Speedmaster

Dealers are reminded that the correct orientation of the front brake hose elbow on the above models is above the stop feature on the brake reservoir and not below as on other models.

If removed for any reason the brake hose elbow must be positioned as shown below.

1. Position a new sealing washer on each side of the brake hose end fitting then secure the hose to the master cylinder with the banjo bolt.
2. Whilst counter-holding the brake hose elbow, tighten the banjo bolt to **25 Nm**.



1. Front brake hose
2. Brake reservoir stop feature

Please mark your copy of the Service Manual with this information.

Item 8.

Description: Throttle Assembly

Models affected: All Models with Temporary Handlebars

Dealers are reminded to ensure that during the motorcycle assembly procedure:

- The throttle assembly is positioned correctly
- The throttle operation is smooth and unobstructed
- The throttle returns to its fully closed position when released
- The throttle grip free play is set to 2 - 3 mm
- To install or adjust the throttle assembly, always refer to the motorcycle assembly guide.

Note:

- **The alignment marks on the handlebars are a guide only, therefore always check the throttle operation prior to riding the motorcycle.**

Please mark your copy of the Service Manual with this information.

Item 9.

Description: Transition Piece

Models affected: Tiger 800 and Tiger 800XC from engine number 617517

Revised transition pieces have been introduced to the above models and are NOT retrofittable. The removal and installation of the transition pieces is as described in the Service Manual noting the following:

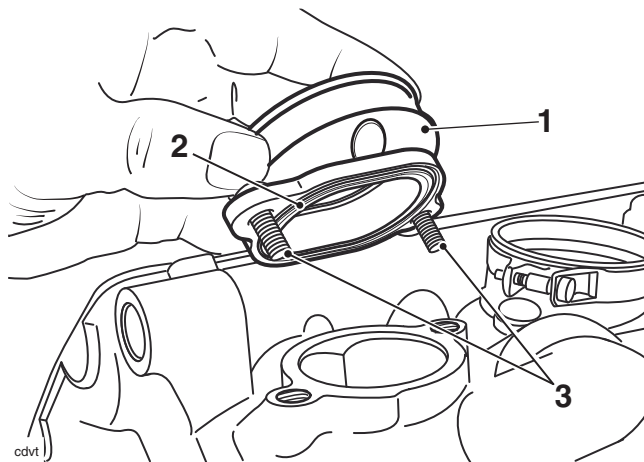
- The new transition pieces have a built-in rubber bead so the original O-rings are no longer required.

New encapsulated fixings have also been introduced. These must be replaced and tightened to **8 Nm** if they are loosened or removed.

If a transition piece has been removed for whatever reason, check the rubber bead for damage before refitting. If damaged fit a new transition piece.

For the removal and installation of the transition pieces, refer to the Service Manual.

When replacing parts, always refer to the EPC.



1. Transition piece

2. Rubber seal

3. Fixings

Please mark your copy of the Service Manual with this information.

Item 10.

Description: ABS Modulator

Models affected: Speed Triple 1050 with ABS up to VIN 499000

This information was originally issued as a www.triumphonline.net notice in December 2011.

When fitting a new ABS modulator (part number T2024104) to the above models, the engine management tune software must be replaced.

Using the latest Triumph diagnostic software, select the tune as appropriate for the market/motorcycle condition from the folder for Speed Triple from VIN 499001 onwards.

Note:

- **The engine management software must be updated for the speedometer to operate correctly.**

Please mark your copy of the Service Manual with this information.

Item 11.

Description: Sprocket Cover Fixings M6 x 16 mm

Models affected: Tiger 1050 from VIN 595279, Speed Triple 1050 from VIN 595279 and Tiger Sport

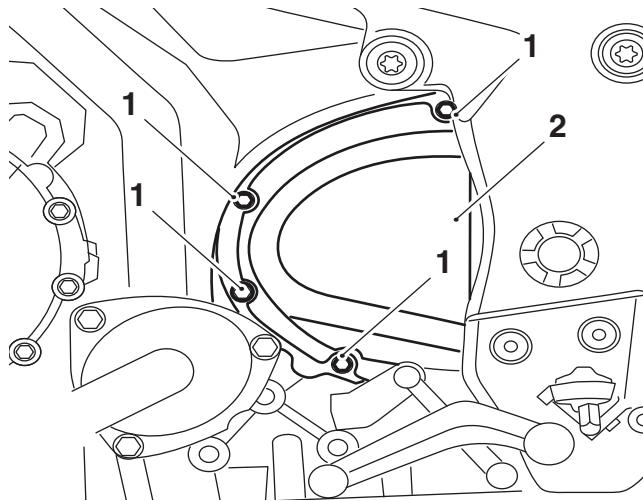
The sprocket cover fixing torque has been reduced on the above models. In addition the length of the fixing has been increased to 16 mm.

The revised torque is **7 Nm**.

When ordering replacement parts, always refer to the EPC.

Note:

- **The M6 x 16 mm fixings need not be re-tightened unless they have been loosened or removed.**
- **The M6 x 12 mm fixings must be replaced with M6 x 16 mm fixings if they have been removed for any reason.**



1. Sprocket cover fixing

2. Sprocket cover

Please mark your copy of the Service Manual with this information.

Item 12.

Description: **Alternator**

Models affected: **Street Triple models from VIN 560477**

A new alternator assembly has been introduced to the above models from VIN 614941 and is not retrofittable. When ordering replacement parts, always refer to the EPC.

The main differences between the original condition and new condition alternator are as follows:

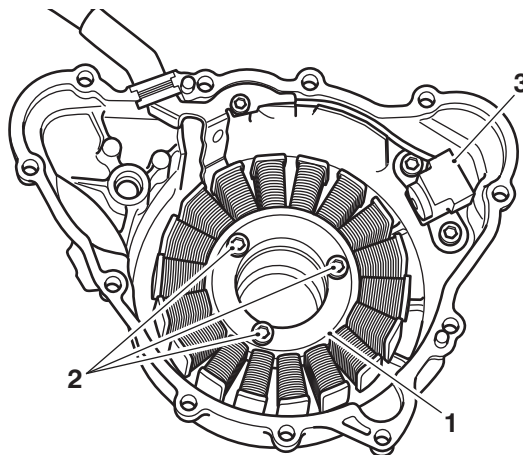
- The stator
- The rotor
- The rotor retaining bolt
- The alternator cover
- The crankshaft position sensor
- The method of oil cooling the alternator.

Cooling the Alternator

From VIN 614941 to aid the cooling of the alternator, oil is taken from the crankshaft oil feed and directed to the alternator via a drilling in the alternator bolt.

Removal and Installation

The removal and installation of the alternator is as described in the Service Manual.



1. Stator
2. Stator fixings
3. Crankshaft position sensor

Please mark your copy of the Service Manual with this information.

Item 13.

Description: Selector Drum and Neutral Light Switch Parts Kits

Models affected: Speed Triple 1050, Speed Triple 1050 R from engine number 539023, Sprint GT from engine number 536533, Tiger 1050 ABS from engine number 536533 and Tiger Sport from engine number 569533

The selector drum has been revised on the above models and is retrofittable from the engine numbers listed above.

If for any reason the selector drum requires replacing the neutral light switch will require adjustment, therefore a parts kit including a 1.5 mm (silver) washer and a 0.9 mm (black) washer are included.

Also, if for any reason the neutral light selector switch is replaced, a separate parts kit is available with the washers also included.

Parts will no longer support the old condition items and any replacement will be the new condition.

When ordering replacement parts, always refer to EPC.

Note:

- **Parts kit T1190977 is for use when the selector drum is replaced.**

Parts Kit Contents

Kit Part Number	Kit Contents	Part Numbers
T1190977	Selector drum assembly Washer 1.5 mm (silver) Washer 0.9 mm (black)	T1191050 T3555044 T3555066

Note:

- **Parts kit T1190988 is for use when the neutral light switch is replaced only.**

Parts Kit Contents

Kit Part Number	Kit Contents	Part Numbers
T1190988	Neutral light switch Washer 1.5 mm (silver) Washer 0.9 mm (black)	T1190494 T3555044 T3555066

Fitting the Selector Drum Parts Kit

1. Install the selector drum, refer to the relevant Service Manual.
2. Shim the neutral light switch as instructed following the instruction described for replacing the neutral light switch.

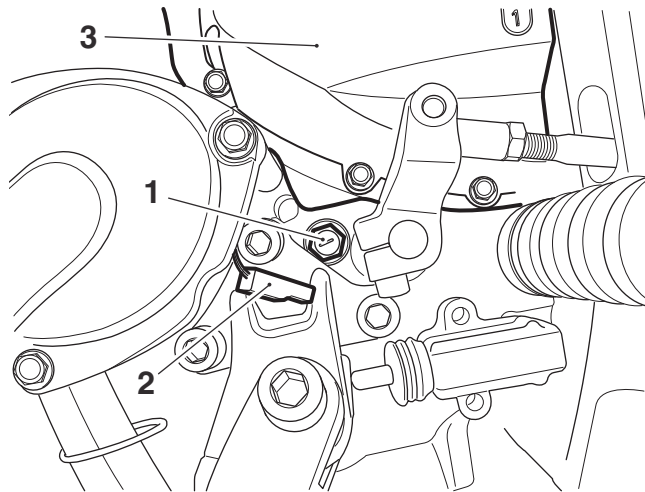
To Replace the Neutral Light Switch only

1. Disconnect the battery as described in the relevant Service Manual.

Note:

- **The neutral light switch is located below the sprocket cover on the left hand side of the motorcycle.**
- 2. Disconnect the neutral light switch from the main harness.

3. Remove the neutral light switch and discard the washer.



1. Neutral light switch - Speed Triple shown
2. Neutral light switch connection
3. Sprocket cover

4. Fit the neutral light switch and the 1.5 mm (silver) washer. Tighten to **10 Nm**.
5. Reconnect the neutral light switch to the main harness.
6. Reconnect the battery as described in the relevant Service Manual for each model. Do not refit the seat/battery cover at this stage.
7. Turn the ignition key to the ON position and ensure that the engine stop switch is in the run position.



Warning

Never start the engine or let it run for any length of time in a closed area. The exhaust fumes are poisonous and may cause loss of consciousness and death within a short time. Always operate the motorcycle in the open-air or in an area with adequate ventilation.



Warning

If selecting gears with the engine running, you **MUST** sit on the bike in the riding position and ensure that the clutch lever is pulled in to the handlebar and that the front brake is applied throughout this operation. Failure to observe this warning will result in loss of motorcycle control and an accident.

Note:

- **It may be necessary to start the engine in order to enable selection of all gears.**
8. Operate the gear change pedal, selecting each gear in turn. Ensure that the neutral light illuminates when neutral is selected and goes out when all other gears are selected.
 9. If correct neutral light operation is observed, no further action is necessary.
 10. If after fitting the 1.5 mm (silver) washer the neutral light does not illuminate when selecting neutral, repeat steps 1 to 9 replacing the 1.5 mm (silver) washer with a new 0.9 mm (black) washer from the kit.
 11. Refit the seat/battery cover as described in the relevant Service Manual for each model.

Note:

- **If after fitting a new neutral light switch and 1.5 mm (silver) washer the neutral light does not illuminate when selecting neutral at very high engine temperature, refer to Technical News 147 dated June 2013.**

Please mark your copy of the Service Manual with this information.

Item 14.

Description: **Alternator**

Models affected: **Tiger 800, Tiger 800 ABS and Tiger 800XC ABS**

A new alternator assembly has been introduced to the above models from engine number 612714 and is not retrofittable. When ordering replacement parts, always refer to the EPC.

The main differences between the original condition and new condition alternator are as follows:

- The stator
- The rotor
- The rotor retaining bolt
- The alternator cover
- The crankshaft position sensor
- The method of oil cooling the alternator.

Cooling the Alternator

From engine number 612714 to aid the cooling of the alternator, oil is taken from the crankshaft oil feed and directed to the alternator via a drilling in the alternator bolt.

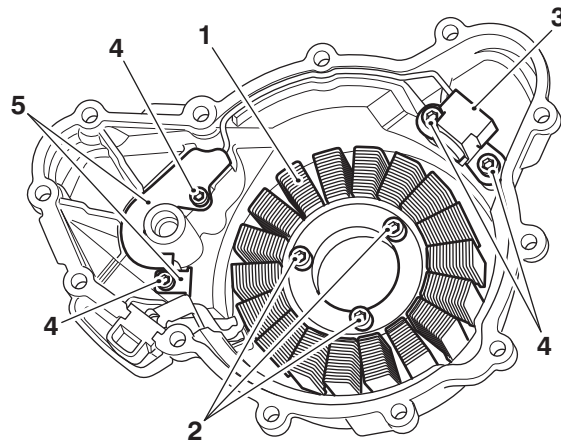
Removal

The removal and installation of the alternator is as described in the Service Manual noting the following:

1. Remove the alternator cover, as described in the Service Manual.

Note:

- **Note the routing of the harnesses for installation.**
2. Remove and discard the fixings securing the stator to the alternator cover.
 3. Remove and discard the fixings securing the two cable brackets to the alternator cover.
 4. Remove and discard the fixings securing the crankshaft position sensor to the alternator cover.



1. **Stator**
2. **Fixings**
3. **Crankshaft position sensor**
4. **Fixings**
5. **Cable brackets**

5. Withdraw the stator and crankshaft position sensor.
6. Remove the rotor, as described in the Service Manual.

Installation

1. Fit the rotor, as described in the Service Manual.
2. Fit the stator to the alternator cover and tighten its new fixings to **12 Nm**.
3. Fit the crankshaft position sensor to the alternator cover and tighten its new fixings to **6 Nm**.
4. Route the harnesses as noted for removal, fit the cable brackets and tighten their new fixings to **6 Nm**.
5. Fit the alternator cover, as described in the Service Manual.

Please mark your copy of the Service Manual with this information.

Item 15.

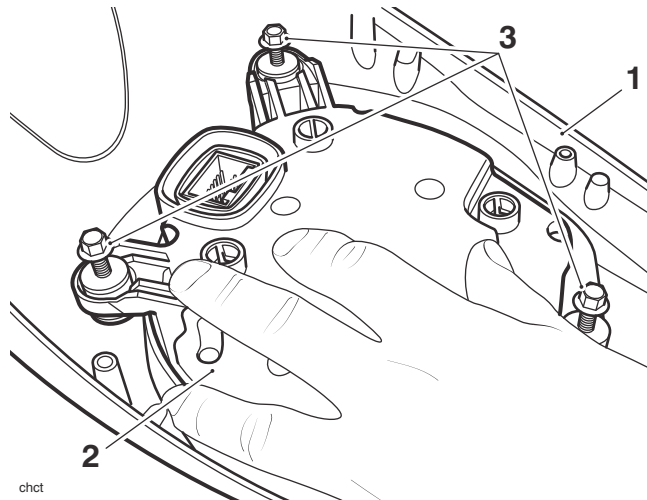
Description: Instrument Fixings

Models affected: Rocket III Touring and Rocket III Touring ABS

The torque figure for the instrument fixings has changed to **1.5 Nm** on the above models.

Note:

- **Models already in service need not be re-tightened unless the fixings have been loosened or removed.**



1. Instrument nacelle
2. Instrument assembly
3. Fixings

Please mark your copy of the Service Manual with this information.

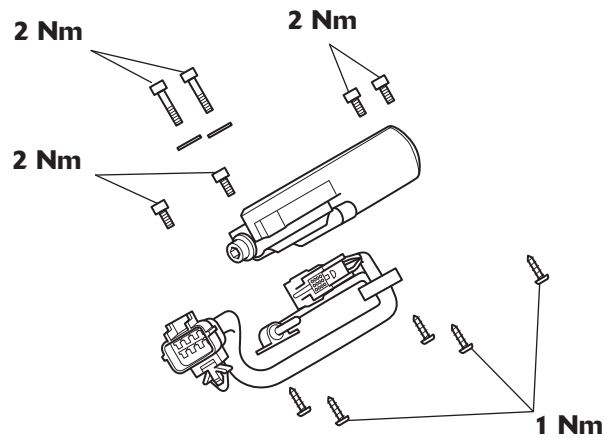
Item 16.

Description: **Windscreen Adjustment Mechanism Spares Assemblies**

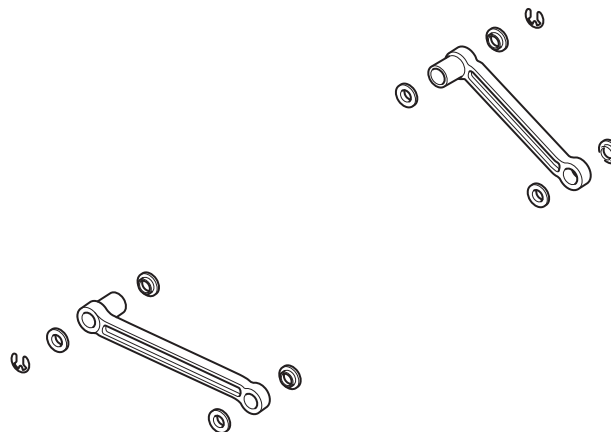
Models affected: **Trophy and Trophy SE**

We would like to make dealers aware that the following spares assemblies are now available on the EPC for the Trophy and Trophy SE windscreen adjustment mechanism. When ordering replacement parts, always refer to the EPC.

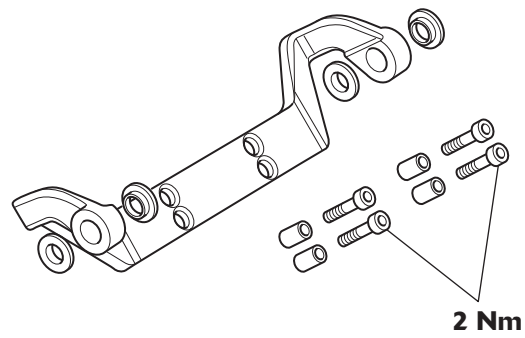
T2305489 - ASM, Screen Motor (For use with Trophy and Trophy SE models from VIN 582541 only)



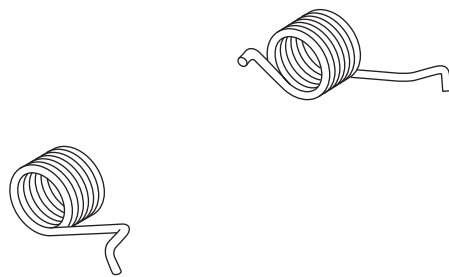
T2305485 - ASM, Upper Arm, Screen Mechanism



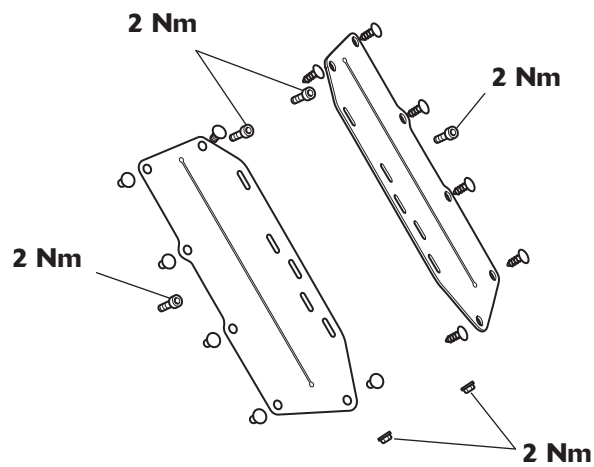
T2305486 - ASM, Lower Arm, Screen Mechanism



T2305487 - Torsion Springs, Screen Mechanism



T2305488 - Rubber Covers, Screen Mechanism



Please mark your copy of the Service Manual with this information.

Item 17.

Description: Tyre Noise
Models affected: Tiger Explorer and Tiger Explorer XC

We have been made aware that in certain circumstances the tyres on Tiger Explorer and Tiger Explorer XC can become noisy when riding on certain road surfaces.

This occurs where the tyre has worn predominantly in the centre of the tread – symptomatic of mainly straight road riding conditions.

This noise is the result of an exposed edge of the tyre tread pattern, which when coming into contact with the road surface creates a humming noise and in some circumstances has been interpreted as a light vibration.

Therefore this should be viewed as a characteristic of the tyre and not as a manufacturing defect.

**Warning**

Use the recommended tyres ONLY in the combinations given. Do not mix tyres from different manufacturers or mix different specification tyres from the same manufacturer as this may result in loss of motorcycle control and an accident.

Please mark your copy of the Service Manual with this information.

Item 18.

Description: Service Manual Correction (Brazil ONLY)
Models affected: Daytona 675 and Daytona 675R from VIN 564948, Street Triple and Street Triple R from VIN 560477

The maximum power and torque figures displayed in the specification table of the above Service Manual, part number 3856915, issue 1, 11.2012 are incorrect.

The table below displays the correct power and torque figures for the above models.

Rendimento	Daytona 675, Daytona 675 R	Street Triple	Street Triple R
Potência máxima (95/1/EC). (Padrão)	94,12 kW (128 PS) a 12.500 rpm	62,50 kW (85 PS) a 11.200 rpm	62,50 kW (85 PS) a 11.200 rpm
Torque máximo. (Padrão)	73 Nm a 9.750 rpm	61 Nm a 8.400 rpm	61 Nm a 8.400 rpm

Please mark your copy of the Service Manual with this information.

Initial and date when read and return to central file holder

Service Manager	Parts Manager	Sales Manager	Workshop Supervisor	Technician 1	Technician 2