

### Contents

- Item 1. Sliding Selector Shaft and Detent Assembly - Speed Triple 1050, Speed Triple 1050 R, Sprint GT and Tiger 1050 from engine number 563847
- Item 2. Triumph Diagnostic Software support for Windows® 8 and Windows® RT operating systems - All
- Item 3. Crankcase Assembly - Daytona 675, Daytona 675 R, Street Triple and Street Triple R
- Item 4. Handlebar End Weights - Trophy and Trophy SE
- Item 5. Steering Damper - Daytona 675 from VIN 564984, Daytona 675 R from VIN 564984
- Item 6. Engine Sump - Bonneville, Bonneville SE, Bonneville T100, Bonneville T100 Black, Bonneville T100 1960, Bonneville T100 Steve McQueen™ edition, Bonneville T100 110th edition, Scrambler, Thruxton, Thruxton SE, America and Speedmaster
- Item 7. Exhaust Butterfly Valve Actuator - Daytona 675, Daytona 675 R from VIN 564948
- Item 8. ABS Bracket - Daytona 675 from VIN 564984, Daytona 675 R from VIN 564984
- Item 9. Immobiliser Screws - Street Triple from VIN 560477, Street Triple R from VIN 560477
- Item 10. Coolant Expansion Tank - Street Triple from VIN 560477, Street Triple R from VIN 560477
- Item 11. Seat Lock - Street Triple and Street Triple R from VIN 560477
- Item 12. Lower Yoke Clamp Fixings - Speed Triple from VIN 461332 and Speed Triple R
- Item 13. Silencer Heat Shield Fixings - Speed Triple from VIN 461332 and Speed Triple R
- Item 14. Twist Grips Bodies - All Models
- Item 15. Brake Lines - Trophy and Trophy SE

### Item 1.

**Description:** Sliding Selector Shaft and Detent Assembly

**Models affected:** Speed Triple 1050, Speed Triple 1050 R, Sprint GT and Tiger 1050 from engine number 563847

A new sliding selector shaft and detent assembly has been introduced on the above models from engine number 563847. The new shaft is secured into the crankcase with E-clips and is not retrofittable.

When ordering replacement parts, always refer to EPC.

### Removal

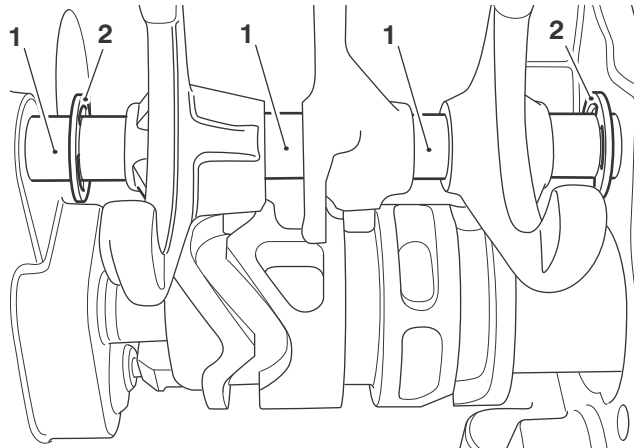
1. Remove the engine from the frame, refer to the service manual.
2. Separate the two halves of the crankcase, refer to the service manual.
3. Remove the input and output shafts from the crankcase, refer to the service manual.



### Caution

The selector forks can be fitted incorrectly. Ensure the position and orientation of the selector forks are marked prior to removal. Incorrect fitting of the selector forks will cause gearbox damage.

- 
- Remove the E-clips from the selector shaft.



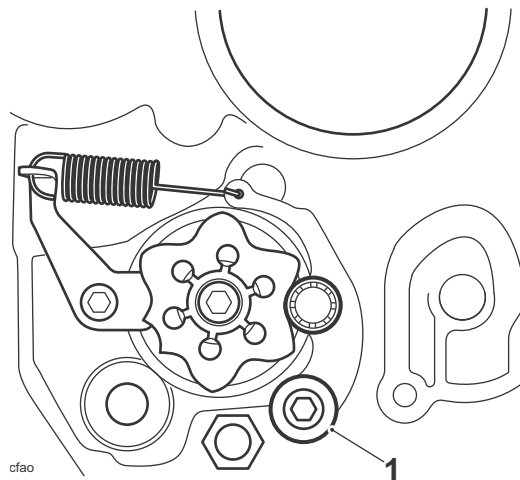
**1. Selector shaft**

**2. E-clips**

- Slide the selector shaft out from the crankcase in the direction of the keeper plate. Collect each selector fork as it is released by the selector shaft.

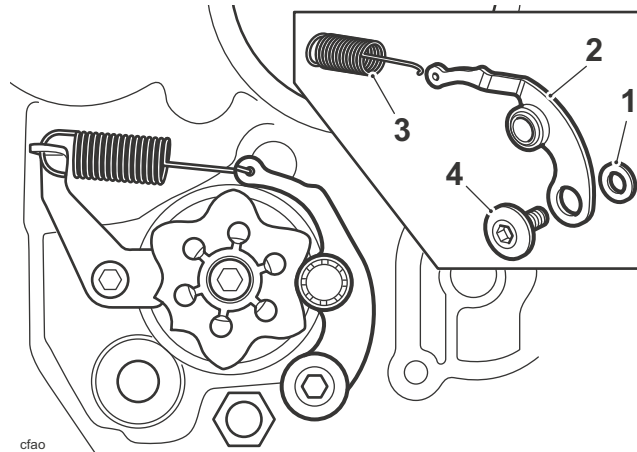
**Note:**

- The detent arm is held in position under spring pressure. Prior to removal, note the orientation of the detent arm, fixing, spring and washer. The same orientation must be retained on assembly.**
- Release and remove the fixing securing the detent arm.
  - Withdraw the detent arm complete with its spring and washer. Discard the fixing.



**1. Fixing**

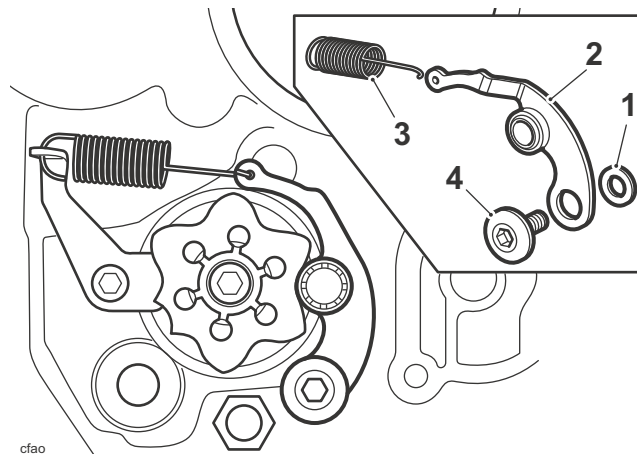
- Remove the fixing from the centre of the detent wheel (discard the fixing) and withdraw the wheel.



1. Washer
2. Detent arm
3. Spring
4. Fixing

#### Installation

- Lubricate with clean engine oil and fit the detent wheel engaging the wheel with the locator pin in the selector drum. Tighten a new fixing to **12 Nm**.
- Assemble the detent arm as noted on removal and place up to the crankcase.



1. Washer
2. Detent arm
3. Spring
4. Fixing

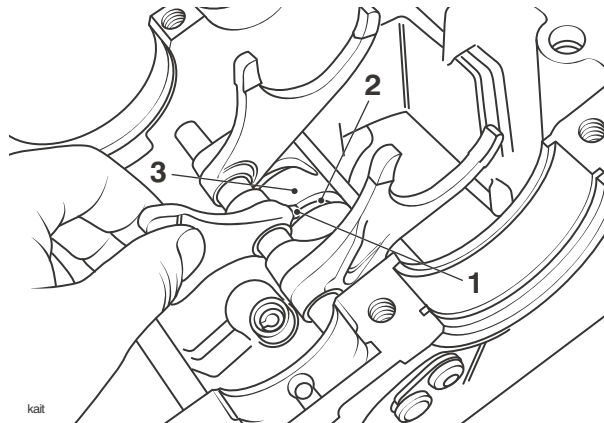
#### Note:

- The selector shaft is symmetrical and can be installed in either orientation.**
- Lubricate with clean engine oil and push the selector shaft into the crankcase from the keeper plate end. As the shaft is inserted lubricate and locate the selector forks. Ensure the forks are fitted in the positions noted during removal.

---

**Note:**

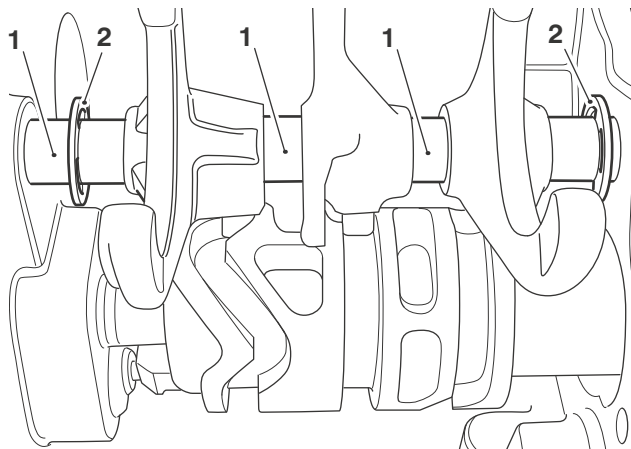
- **The centre selector fork locates in the selector drum as shown below:**



1. Selector fork stop
2. Selector drum track
3. Selector drum

**Note:**

- **If the blanking screw is removed for any reason, clean and apply one drop of ThreeBond 1305 to the threads. Tighten the screw to 22 Nm.**
4. Refit the E-clips to the selector shaft.



1. Selector shaft
2. E-clips

5. Fit the input and output shafts, refer to the service manual.
6. Refit the two halves of the crankcase, refer to the service manual.
7. Refit the engine to the frame, refer to the service manual.

**Please mark your copy of the service manual with this information.**

---

## Item 2.

**Description:** **Triumph Diagnostic Software support for Windows<sup>®</sup> 8 and Windows<sup>®</sup> RT operating systems**

**Models affected:** **All**

### Windows<sup>®</sup> 8

The Triumph Diagnostic Software has now been fully tested for compatibility with both 32-bit and 64-bit versions of the recently released Windows<sup>®</sup> 8 operating systems.

Test results have highlighted no concerns, however due to the huge variations in computer specifications and hardware combinations it is impossible for Triumph to test all possible computer configurations. We would therefore appreciate it if you could report any concerns or performance issues found with the Triumph Diagnostic Software on the Windows<sup>®</sup> 8 based system to Triumph as soon as possible.

### Windows<sup>®</sup> RT

The Triumph Diagnostic Software is NOT compatible with the Windows<sup>®</sup> RT operating systems, designed for use on tablets and mobile devices using ARM based processors.

This operating system is very different from the current (x86 based) computer architecture, and only permits the use of software downloaded from 'The Windows Store'.

There are no plans to provide software support for this operating system.

Triumph Motorcycles Limited recommends you check the system specifications very carefully before purchasing any computers intended to use the Triumph Diagnostic Software.

The Triumph Diagnostic Tool User Guide will be updated in the near future to include this information.

We seek to remind dealers of the minimum equipment requirements to run the Triumph Diagnostic software:

A desktop or laptop Personal Computer (PC) running 32-bit or 64-bit Microsoft™ Windows<sup>®</sup> XP, Windows<sup>®</sup> Vista, Windows<sup>®</sup> 7 or Windows<sup>®</sup> 8 operating systems, with a 1 GHz processor or equivalent, 10 GB of free hard disk space and a minimum of 256 to 512 MB of memory (RAM).

- The PC must have a free USB (Universal Serial Bus) port.
- The PC must have a CD-ROM drive.
- The PC must be connected to the internet (Broadband is not essential but is preferred).
- 1024 x 768 standard XGA monitor or a 1200 x 800 Widescreen Monitor.

## Item 3.

**Description:** **Crankcase Assembly**

**Models affected:** **Daytona 675, Daytona 675 R, Street Triple and Street Triple R**

A new crankcase assembly has been introduced to the above models. The new condition crankcase has an enhanced profile around the dipstick area. Therefore a new crankcase assembly will not match an old sump as the profile of the joint faces differ.

If for any reason the crankcase is replaced with a new condition unit, a new condition sump and gasket will also be included in the spares kit.

---

The options are as follows:

**Daytona 675 Silver Crankcase**

Description	Part Number
Crankcase assembly spares kit (silver)	T1162127

**Daytona 675 Black Crankcase**

Description	Part Number
Crankcase assembly spares kit (black)	T1163054

**Street Triple and Street Triple R up to engine number 415723**

Description	Part Number
Crankcase assembly spares kit (black)	T1163054

**Daytona 675, Street Triple and Street Triple R from engine number 415724**

Description	Part Number
Crankcase assembly spares kit (black)	T1162152

**Please mark your copy of the service manual with this information.**

**Item 4.**

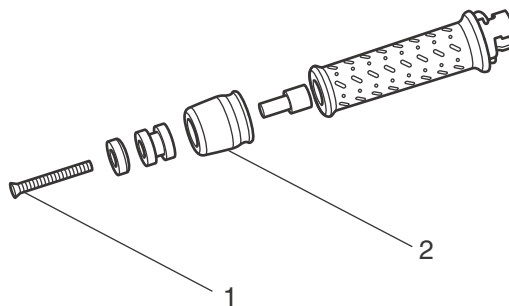
**Description:** Handlebar End Weights

**Models affected:** Trophy and Trophy SE

The torque figure for the handlebar end weight fixing has changed to **5 Nm** on the above models.

**Note:**

- **Models already in service need not be re-tightened unless the fixings have been loosened or removed.**



**1. Fixing**

**2. Handlebar end weight**

**Please mark your copy of the service manual with this information.**

---

**Item 5.**

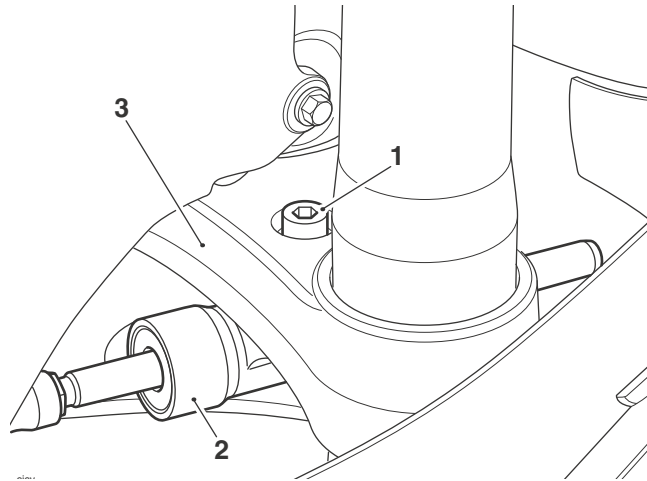
**Description:**                    **Steering Damper**

**Models affected:**                **Daytona 675 from VIN 564984, Daytona 675 R from VIN 564984**

The torque figure for the steering damper fixing to the lower yoke has changed to **20 Nm** on the above models.

**Note:**

- **Models already in service need not be re-tightened unless the fixings have been loosened or removed.**



1. Fixing
2. Steering damper
3. Lower yoke

**Please mark your copy of the service manual with this information.**

---

## Item 6.

**Description:** Engine Sump

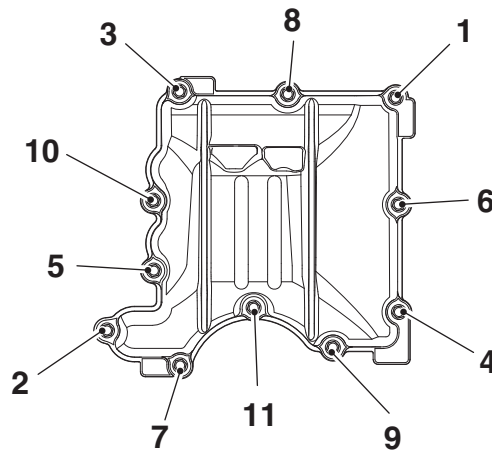
**Models affected:** Bonneville, Bonneville SE, Bonneville T100, Bonneville T100 Black, Bonneville T100 1960, Bonneville T100 Steve McQueen™ edition, Bonneville T100 110th edition, Scrambler, Thruxton, Thruxton SE, America and Speedmaster

The torque figure for the sump fixings has changed to **10 Nm** on the above models.

1. Tighten fixings 1 to 11 in the sequence shown below to **10 Nm**.
2. Re-tighten fixings 1 and 2 to **10 Nm**.

**Note:**

- **Models already in service need not be re-tightened unless the fixings have been loosened or removed.**



**Tightening Sequence**

**Please mark your copy of the service manual with this information.**

---

**Item 7.****Description:** Exhaust Butterfly Valve Actuator**Models affected:** Daytona 675, Daytona 675 R from VIN 564948

The Daytona 675 and 675 R from VIN 564948 are now fitted with a new design of exhaust butterfly valve actuator. The new internal mechanism means it is no longer possible to rotate the pulley wheel without causing damage to the internal drive gear.

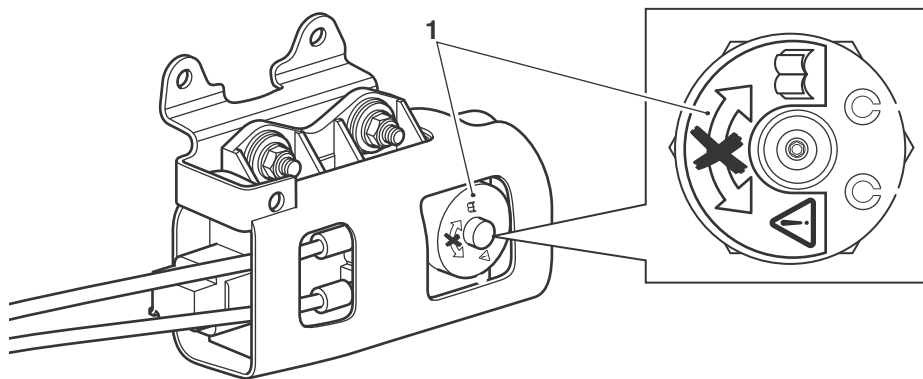
If for any reason the pulley wheel is manually rotated internal damage will result and a new actuator will be required.

Therefore when checking the operation of the exhaust butterfly valve actuator, always use the Function Test feature on the Triumph Diagnostic Tool.

A warning label has also been attached to the pulley wheel on the exhaust butterfly valve actuator to serve as a reminder. Triumph will not allow warranty claims for damaged exhaust butterfly valve actuators that have been rotated manually.

**! Caution**

Do not rotate the pulley on the exhaust butterfly valve actuator. Rotating the pulley will damage the internal components of the actuator.

**1. Warning label**

Please mark your copy of the service manual with this information.

---

**Item 8.**

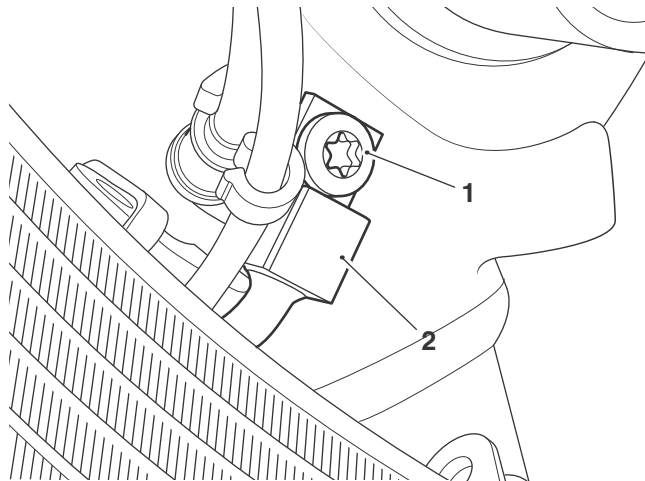
**Description:**                **ABS Bracket**

**Models affected:**            **Daytona 675 from VIN 564984, Daytona 675 R from VIN 564984**

The torque figure for the ABS headstock brake pipe union fixing has changed to **15 Nm** on the above models.

**Note:**

- **Models already in service need not be re-tightened unless the fixings have been loosened or removed.**
- **If removed for any reason the fixing must be replaced.**



- 1. Fixing
- 2. Bracket

**Please mark your copy of the service manual with this information.**

---

## Item 9.

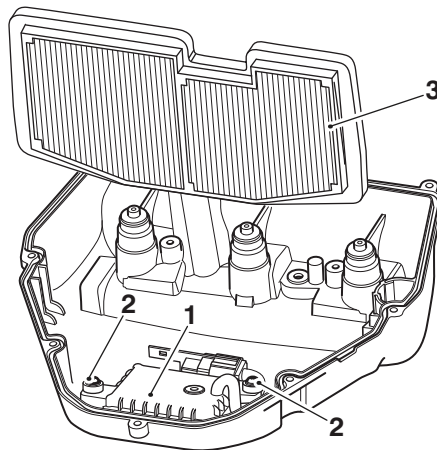
**Description:** Immobiliser Screws

**Models affected:** Street Triple from VIN 560477, Street Triple R from VIN 560477

The torque figure for the engine immobiliser fixings has changed to **1.5 Nm** on the above models.

**Note:**

- **Models already in service need not be re-tightened unless the fixings have been loosened or removed.**



1. Immobiliser
2. Fixing
3. Air filter element

**Please mark your copy of the service manual with this information.**

---

### Item 10.

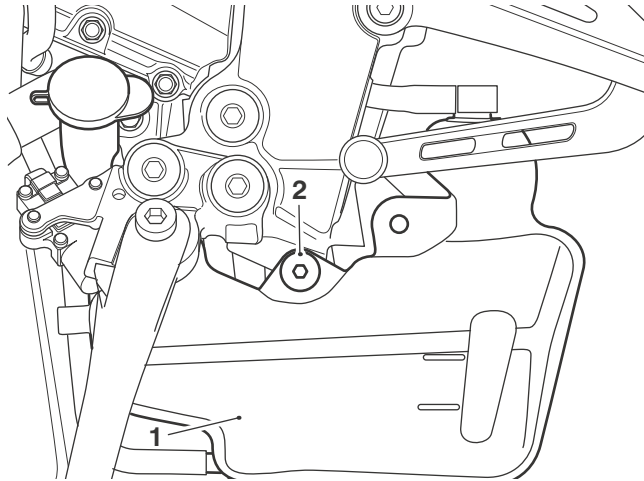
**Description:** Coolant Expansion Tank

**Models affected:** Street Triple from VIN 560477, Street Triple R from VIN 560477

The torque figure for the coolant expansion tank fixing has changed to **7 Nm** on the above models.

**Note:**

- **Models already in service need not be re-tightened unless the fixings have been loosened or removed.**



1. Coolant expansion tank (cover removed)

2. Fixing

**Please mark your copy of the service manual with this information.**

### Item 11.

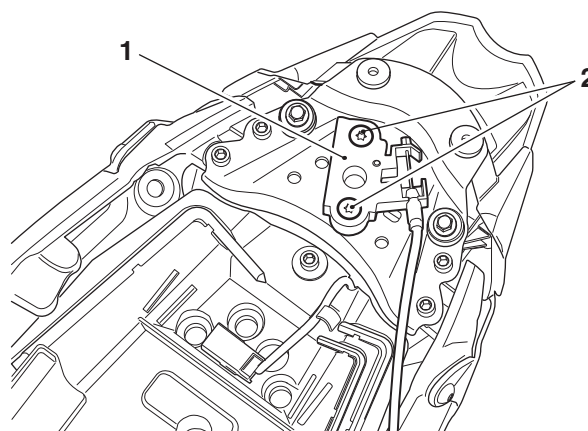
**Description:** Seat Lock

**Models affected:** Street Triple and Street Triple R from VIN 560477

The torque figure for the seat lock fixings has changed to **5 Nm** on the above models.

**Note:**

- **Models already in service need not be re-tightened unless the fixings have been loosened or removed.**



1. Seat lock

2. Fixings

**Please mark your copy of the service manual with this information.**

---

## Item 12.

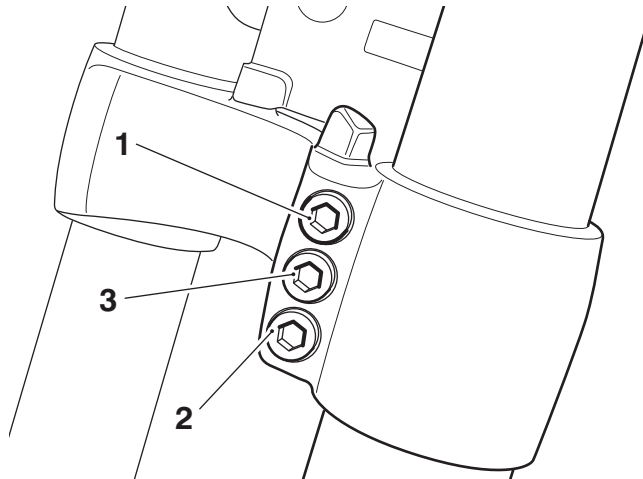
**Description:** Lower Yoke Clamp Fixings

**Models affected:** Speed Triple from VIN 461332 and Speed Triple R

The tightening sequence for the lower yoke clamp's three fixings has changed. Tighten the lower yoke clamp fixings to **25 Nm** in the sequence shown below.

**Note:**

- **Models already in service need not be re-tightened unless the fixings have been loosened or removed.**



**Tightening Sequence for the Clamp Fixings**

**Please mark your copy of the service manual with this information.**

## Item 13.

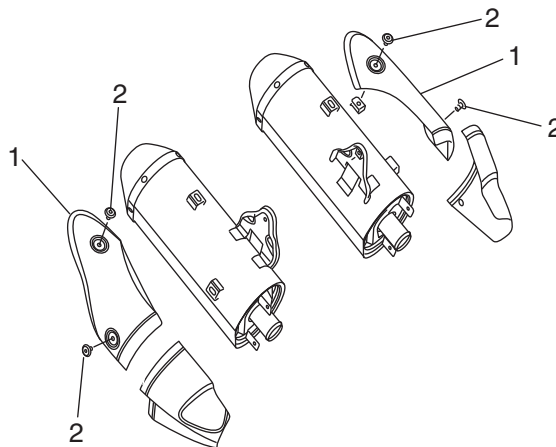
**Description:** Silencer Heat Shield Fixings

**Models affected:** Speed Triple from VIN 461332 and Speed Triple R

The torque figure for the silencer heat shield fixings has changed to **8 Nm** on the above models.

**Note:**

- **Models already in service need not be re-tightened unless the fixings have been loosened or removed.**



1. Heat shield

2. Fixings

**Please mark your copy of the service manual with this information.**

---

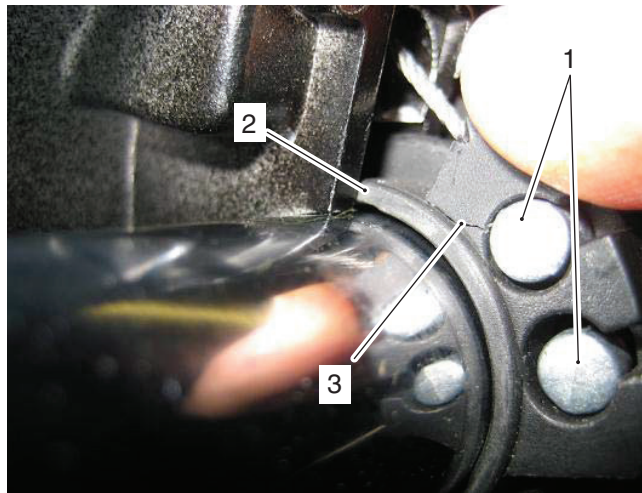
## Item 14.

**Description:** Twist Grips Bodies

**Models affected:** All Models

It has come to our attention that a small number of twist grip bodies are cracking in the area where the throttle cables are attached to the twist grip. See picture below.

Following our investigations, we note that this damage will only occur when throttle cable free play has been incorrectly adjusted and the free play has been reduced or removed completely.



1. Throttle cables
2. Twist grip body
3. Cracked area

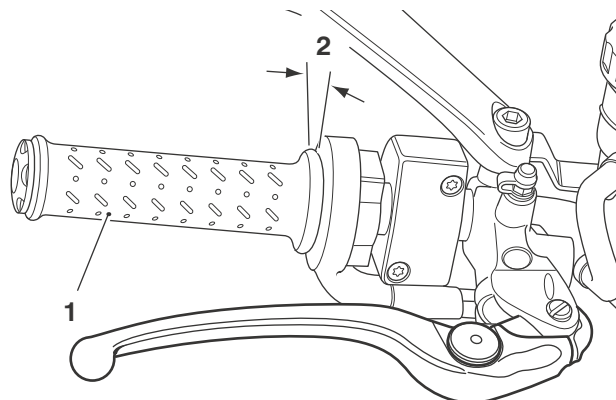


### Warning

Operation of the motorcycle with incorrectly adjusted throttle cables will cause damage to the twist grip. A damaged twist grip will interfere with the throttle function resulting in loss of motorcycle control and an accident.

To avoid incorrect adjustment, incorrect routing, or continued use of a sticking or damaged throttle, always have the throttle checked and adjusted by your authorised Triumph dealer.

The owner's handbook and service manual both state that there must be 2-3 mm of free play in the throttle cables which is measured at the throttle grip.



chm\_1

1. Throttle grip
2. Correct setting, 2-3 mm

---

Refer to the service manual when fitting or adjusting the throttle cables.

Our warranty terms and conditions exclude claims that arise from incorrect fitment and/or adjustment. Any future warranty claims for the original equipment or accessory twist grip bodies caused by incorrect adjustment should therefore be rejected.

### Item 15.

**Description:** Brake Lines

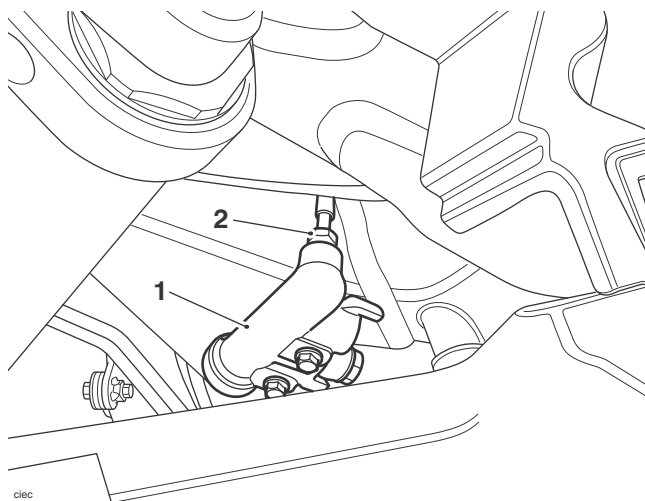
**Models affected:** Trophy and Trophy SE

The torque figure for the brake line unions listed below have changed to **15 Nm** on the above models.

**Note:**

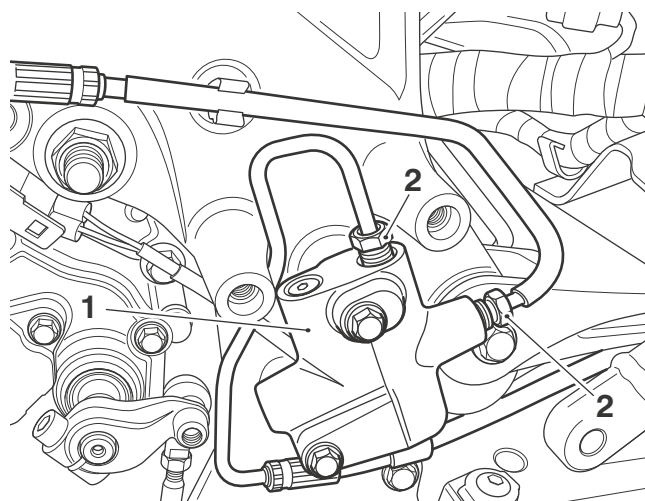
- **Models already in service need not be re-tightened unless the fixings have been loosened or removed.**

### Delay Valve



- 1. Delay valve
- 2. Brake line union

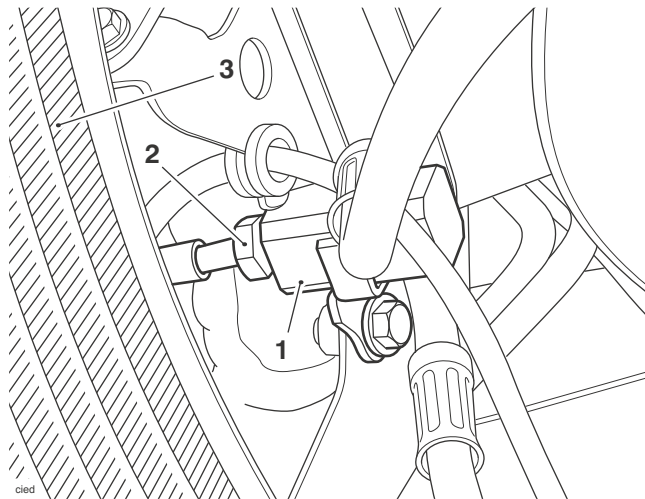
### Proportioning Valve



- 1. Proportioning valve
- 2. Rear brake line unions

---

**Front Brake Hose Manifold**



- 1. Front brake hose manifold
- 2. Brake line union
- 3. Radiator

**Please mark your copy of the service manual with this information.**

Initial and date when read and return to central file holder

Service Manager	Parts Manager	Sales Manager	Workshop Supervisor	Technician 1	Technician 2