



Service Bulletin 484

Strictly Confidential

March 2013

Affected ModelsDaytona 675, Daytona 675R, Daytona 675 ABS,
Daytona 675R ABS

VIN RangeVIN 564948 to VIN 586561

MarketsAll

SubjectExhaust Butterfly Valve Cables

Background Information

We have identified a need to replace the exhaust butterfly valve cables on the above models. Dealers are requested to remove and replace the exhaust butterfly valve cables.

Customer Contact Instructions

Motorcycles in the affected VIN range must be modified prior to delivery to the customer, or at the next service/visit to the dealership.

Identification of Affected Motorcycles

Daytona 675, Daytona 675R, Daytona 675 ABS and Daytona 675R ABS motorcycles listed in the VIN range above.

Warranty Claim Instructions

Fault code01249791

Repair code99484

Repair time allowance0.51 hrs (includes admin allowance)

Genuine Parts Information

Genuine Parts1 x T2202069 - Cables, Exhaust Valve

TRIUMPH

Genuine Parts Ordering Instructions.For Triumph Subsidiary and Overseas Distributor dealers using Triumph Warranty On-Line with Parts Auto Ordering Flag switched on: Order all repair parts by submitting a New Prior through the Warranty On-Line system. Entering the above repair code in a New Prior will automatically add the parts required and labour times for this Service Bulletin.

For Overseas Distributor dealers NOT using Triumph Warranty On-Line or for Overseas Distributor dealers using Triumph Warranty On-Line with Parts Auto Ordering Flag switched off: Orders should be placed using the normal parts ordering procedure.

Parts Return Instructions.Dealer to retain parts for 90 days. All parts must be stored in a secure, non-public accessed area and correctly identified with a completed warranty label. Thereafter the parts must be rendered unusable prior to scrapping.

Other Instructions

Once completed, please mark the service record book that the requirements of this bulletin have been complied with.

Replacement Procedure

Note:

- **The exhaust butterfly valve cables must be replaced following the procedure listed in this models service manual. However, the cables must be checked and adjusted at the correct stage of installation, following the procedure detailed below.**

Remove and replace the exhaust butterfly valve cables following the procedure listed in this model's service manual. Check and adjust the cables at the correct stage of installation following the procedure detailed below.

Warning

Throughout this procedure, ensure that the motorcycle is stabilised and adequately supported to prevent the risk of injury from the motorcycle falling.

Warning

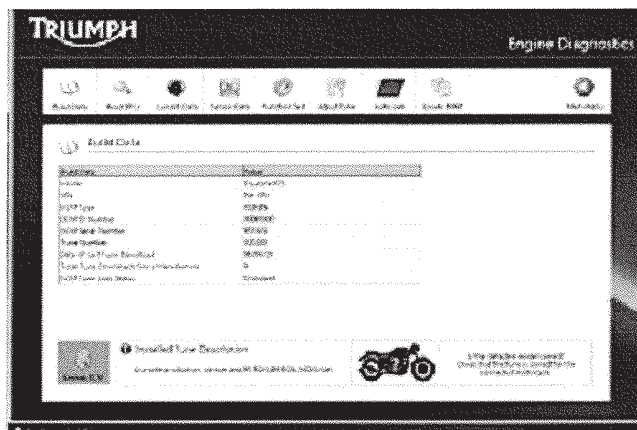
If the engine has recently been running, the exhaust system will be hot. Before working on or near the exhaust system, allow sufficient time for the exhaust system to cool as touching any part of a hot exhaust system could cause burn injuries.

TRIUMPH

To help accurately check and set the adjustment of the control cables for the exhaust butterfly valve, use the Triumph diagnostic tool as described below.

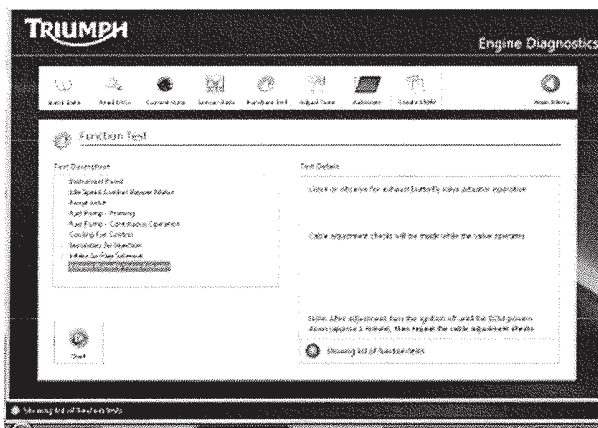
Check the Control Cables

1. Remove the rider's seat, as described in the service manual.
2. Attach the Triumph diagnostic tool to the dedicated plug and turn the ignition switch to the ON position, refer to the Triumph Diagnostic Tool User Guide.
3. Open the Engine Diagnostics menu.



Engine Diagnostics Menu

4. Select the Function Test option.



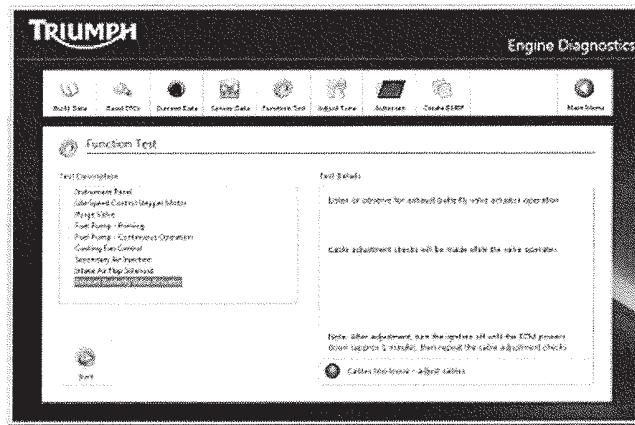
Function Test Menu

Warning

Clicking the 'Start' button will cause the exhaust butterfly valve to move several times. To prevent injury, never place loose clothing, fingers or hands near the exhaust valve actuator, cables or the valve on the silencer, until the actuator has moved to the adjustment position. Loose clothing, fingers or the hands could become trapped during valve/actuator movement and cause crushing injury to the fingers, hands or other parts of the anatomy.

TRIUMPH

5. Select Exhaust Butterfly Valve Actuator then click the 'Start' button. The software will also show the message 'Cable adjustment checks will be made while the valve operates'.
6. Typically, the software will operate the valve several times and will then report its cable adjustment findings near the bottom of the PC screen. In some circumstances, particularly if the cables are not correctly adjusted, the test result will be shown immediately without running a test. This is because the software recovers data from the ECU on initiation and does not need to run the function test to determine a result. The software will display four possible results as follows:
 - Cables too tight.
 - Cables too loose.
 - Cables not evenly adjusted.
 - Cables correctly adjusted.



Function Test Menu

Note:

- **Do not adjust the cables in the Function Test screen. With the diagnostic software in the Function Test screen, one cable will be under tension and the other will be slack. This will prevent the cables from being evenly adjusted.**
7. If the test fails, do not adjust the cables while the diagnostic software is in the Function Test screen. Select the Adjust Tune option then adjust the cables as described in Adjustment of the Control Cables.

Adjustment of the Control Cables

Caution

Do not rotate the pulley on the exhaust butterfly valve actuator. Rotating the pulley will damage the internal components of the actuator.

Note:

- **The adjustment procedure must be followed to give a preliminary cable setting. Correct cable adjustment must be confirmed by the diagnostic software.**
1. On the diagnostic software navigate to and select the Adjust Tune option.

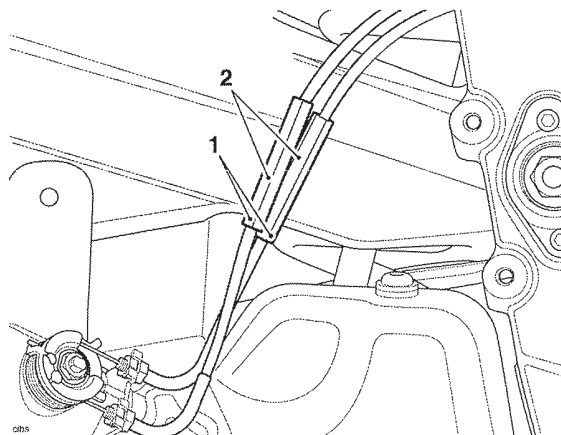
Warning

Clicking the 'Adjust' button will cause the exhaust valve actuator to move to the adjustment position. To prevent injury, never place loose clothing, fingers or hands near the exhaust valve actuator, cables or the valve on the silencer, until the actuator has moved to the adjustment position. Loose clothing, fingers or the hands could become trapped during valve/actuator movement and cause crushing injury to the fingers, hands or other parts of the anatomy.

2. Select Exhaust Butterfly Valve Cable Adjust then click the 'Adjust' button.

Note:

- **The cable adjustment must only be made when the exhaust butterfly valve is in its middle position.**
3. Click the 'Adjust' button a second time. The diagnostic software will send a command which drives the exhaust valve actuator to the middle position. The diagnostic software will then show 'Adjust cable - press OK to continue' on the screen. Do not click the 'OK' button until the cable adjustment is completed.
 4. The exhaust butterfly cables can now be adjusted as follows:
 5. Taking care not to scratch the frame with the control plate, release the adjuster lock nut on each exhaust butterfly valve cable.

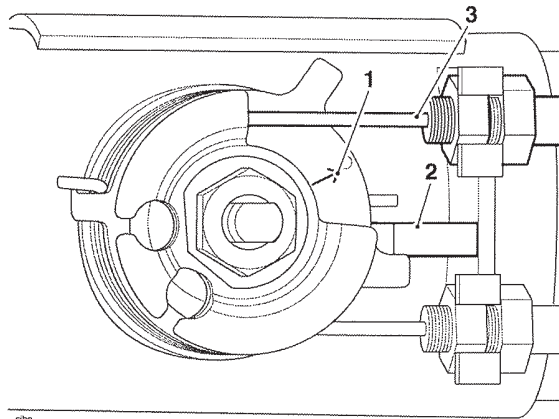


1. Lock nuts
2. Adjusters, control plate removed for clarity

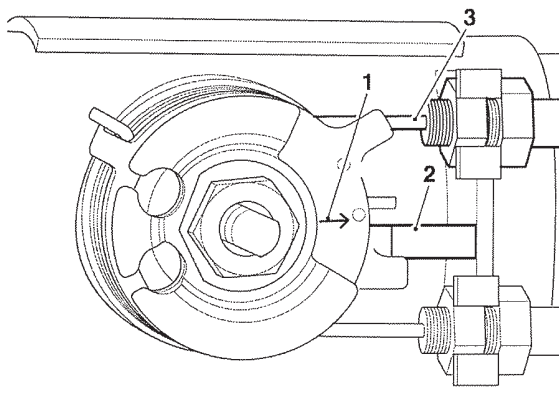
TRIUMPH

Note:

- **The closing cable is uppermost and has the silver coloured end.**
6. Adjust the closing cable adjuster until the arrow on the butterfly valve pulley is aligned with the upper edge of the butterfly valve stop.



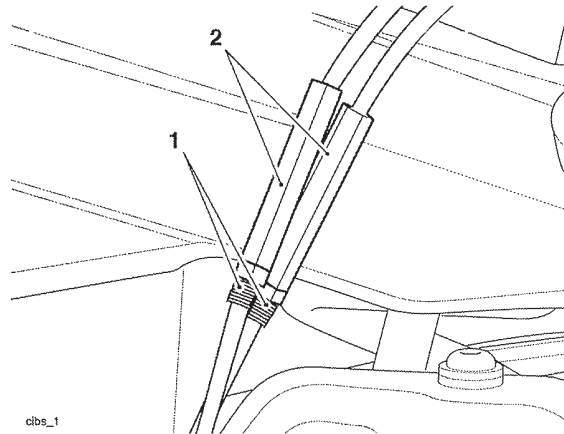
1. Arrow, before adjustment
2. Butterfly valve stop
3. Closing cable



1. Arrow, after adjustment
2. Butterfly valve stop
3. Closing cable

TRIUMPH

7. With the arrow aligned with the upper edge of the butterfly valve stop, adjust the opening cable until it has the same amount of thread showing as the closing cable.



1. Threaded area
2. Adjusters, control plate removed for clarity

Warning

Clicking the 'OK' button will cause the exhaust valve actuator to move to the closed position and then the fully open position. To prevent injury, never place loose clothing, fingers or hands near the exhaust valve actuator, cables or the valve on the silencer, until the actuator has stopped. Loose clothing, fingers or the hands could become trapped during valve/actuator movement and cause crushing injury to the fingers, hands or other parts of the anatomy.

8. When the adjustment of the cable is complete, click the 'OK' button. The exhaust butterfly valve will now move to the closed position and then the fully open position.
9. Click the 'OK' button again to finish.
10. If the adjustment is not correct, 'Cables too loose - Adjust cables' or 'Cables too tight - Adjust cables' will be displayed. Repeat steps 6 to 9 to tighten or loosen the cables evenly as required.
11. On the diagnostic software, click the Adjust button to check the cable adjustment. If necessary, repeat the adjustment procedure.
12. Once adjustment is correct, tighten the adjuster lock nuts to **5 Nm**.

Note:

- **If the adjustment is not correct, the Malfunction Indicator Light (MIL) will be illuminated, indicating the presence of DTCs (Diagnostic Trouble Codes).**
 - **The following will be displayed: 'Exhaust butterfly cables adjust DTCs present - Read and erase DTCs'.**
13. Rectify the DTCs as necessary by repeating the adjustment procedure.
 14. On the diagnostic software, select READ STORED DTCS, erase any stored DTCs.
 15. Close the software and disconnect the Triumph diagnostic tool.
 16. Refit the rider's control plate, as described in the service manual.
 17. Refit the silencer heat shield, as described in the service manual.
 18. Refit the rider's seat, as described in the service manual.

TRIUMPH

Note:

- Some affected motorcycles listed in the VIN range will have been modified and repaired by Triumph prior to their release from the factory.
- The modified motorcycles can be identified by checking the 'Outstanding Service Bulletins' on Warranty On-Line.

Circulation

(Initial and date when read and return to central file holder)

Service Manager	Parts Manager	Sales Manager	Workshop Supervisor	Technician 1	Technician 2