



SERVICE BULLETIN

Classification:

BT13-023

Reference:

NTB13-103

Date:

November 26, 2013

2013 - 2014 ALTIMA SEDAN; REAR COMBINATION LAMP SCRATCHES PAINT

APPLIED VEHICLE: 2013 - 2014 Altima Sedan (L33)

IF YOU CONFIRM:

Contact marks on the painted surface of the body are visible anywhere along the forward edges of either rear combination lamp.



Figure 1

ACTION:

1. Using standard auto body repair practices, perform a Refinish Half-Block Repair to the area(s) affected by the rear combination lamp(s).
2. Apply a piece of protective urethane tape (see **PARTS INFORMATION**) on both sides of the vehicle where shown in the **SERVICE PROCEDURE**.

IMPORTANT: The purpose of ACTION (above) is to give you a quick idea of the work you will be performing. You **MUST** closely follow the entire **SERVICE PROCEDURE** as it contains information that is essential to successfully completing this repair.

Nissan Bulletins are intended for use by qualified technicians, not 'do-it-yourselfers'. Qualified technicians are properly trained individuals who have the equipment, tools, safety instruction, and know-how to do a job properly and safely. **NOTE:** If you believe that a described condition may apply to a particular vehicle, **DO NOT** assume that it does. See your Nissan dealer to determine if this applies to your vehicle.

SERVICE PROCEDURE

1. Remove both rear combination lamps.
 - For removal procedure, refer to the **L DRIVER CONTROLS > EXL Exterior Lighting System** section of the Electronic Service Manual (ESM), if needed.
2. Using standard auto body repair practices, perform a Refinish Half-Block Repair to the area of the body that has surface contact marks.

NOTE: This repair must be performed by a qualified auto body/paint shop. Refer to the Nissan Warranty Paint Flat Rate Manual for information on or definition of a Refinish Half-Block Repair.

3. After the Refinish Half-Block Repairs are completed, make sure the area shown in Figure 2 is clean and dry.

NOTE: The right rear combination lamp area is shown in all pictures of this bulletin. The left rear side is similar.

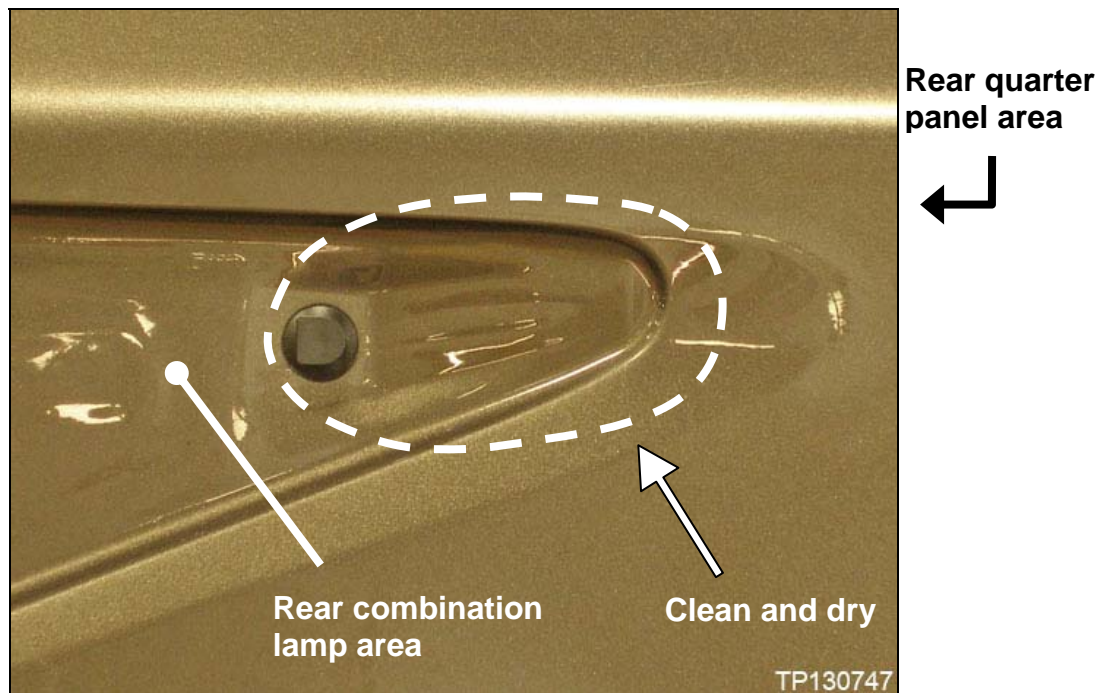


Figure 2

4. Position the template with protective urethane tape up against the pin as shown in Figure 3.
 - This puts the template close to where it needs to be.
 - Templates are labeled as “L” for left / driver side, and “R” for right / passenger side.
5. While in this position, move the template as needed to locate the protective urethane tape where shown in Figure 3.

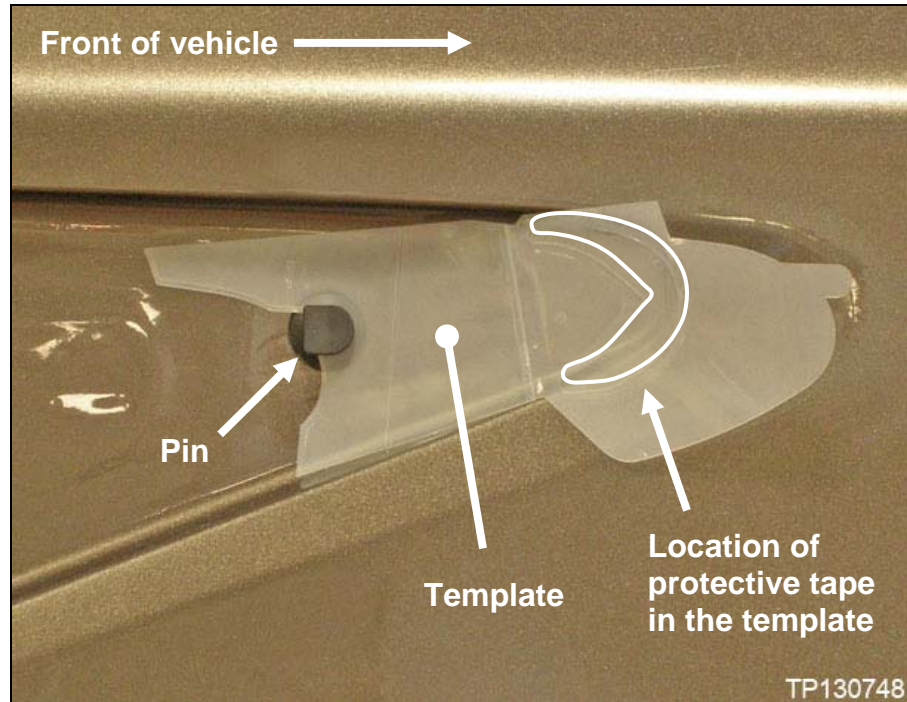


Figure 3

- Figure 4 shows where the protective tape ends up when applied.

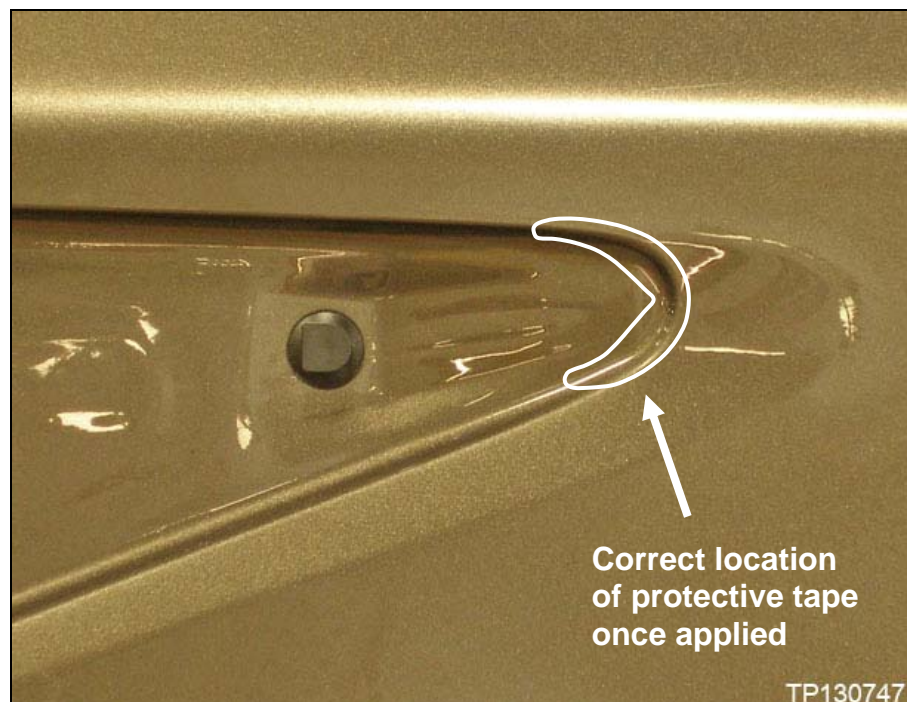


Figure 4

6. Apply the template to the body.

- Apply the template as instructed in Figure 5.
- The area of the template adhered to the body will keep the protective tape in the desired position.
- **Make sure the protective tape is positioned correctly.**
- Save all of the backing pieces. They will be used during combination lamp installation.

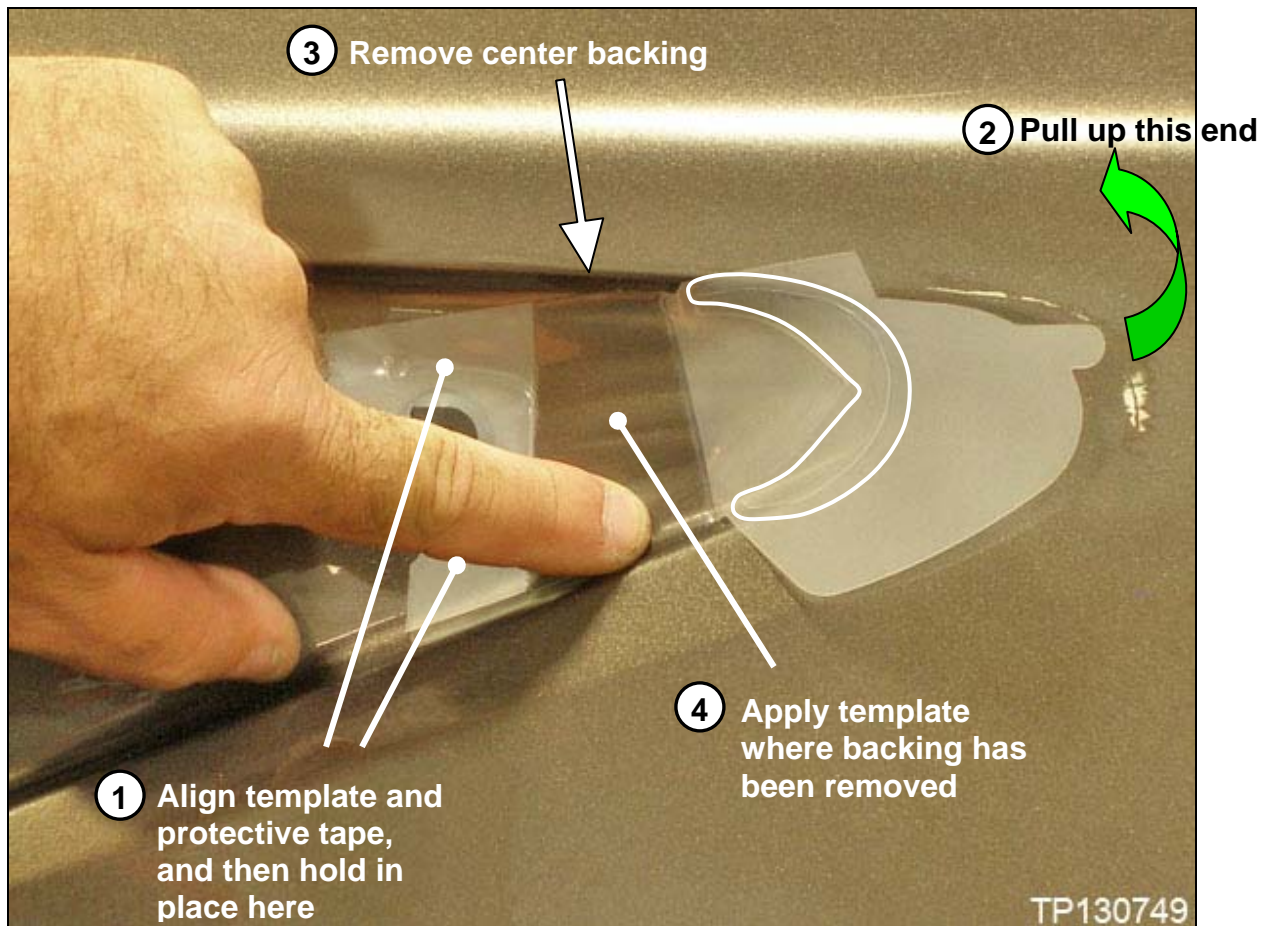


Figure 5

7. Apply the protective tape to the body.
- Apply the protective tape as instructed in Figure 6.
 - **Make sure the protective tape is positioned correctly.**

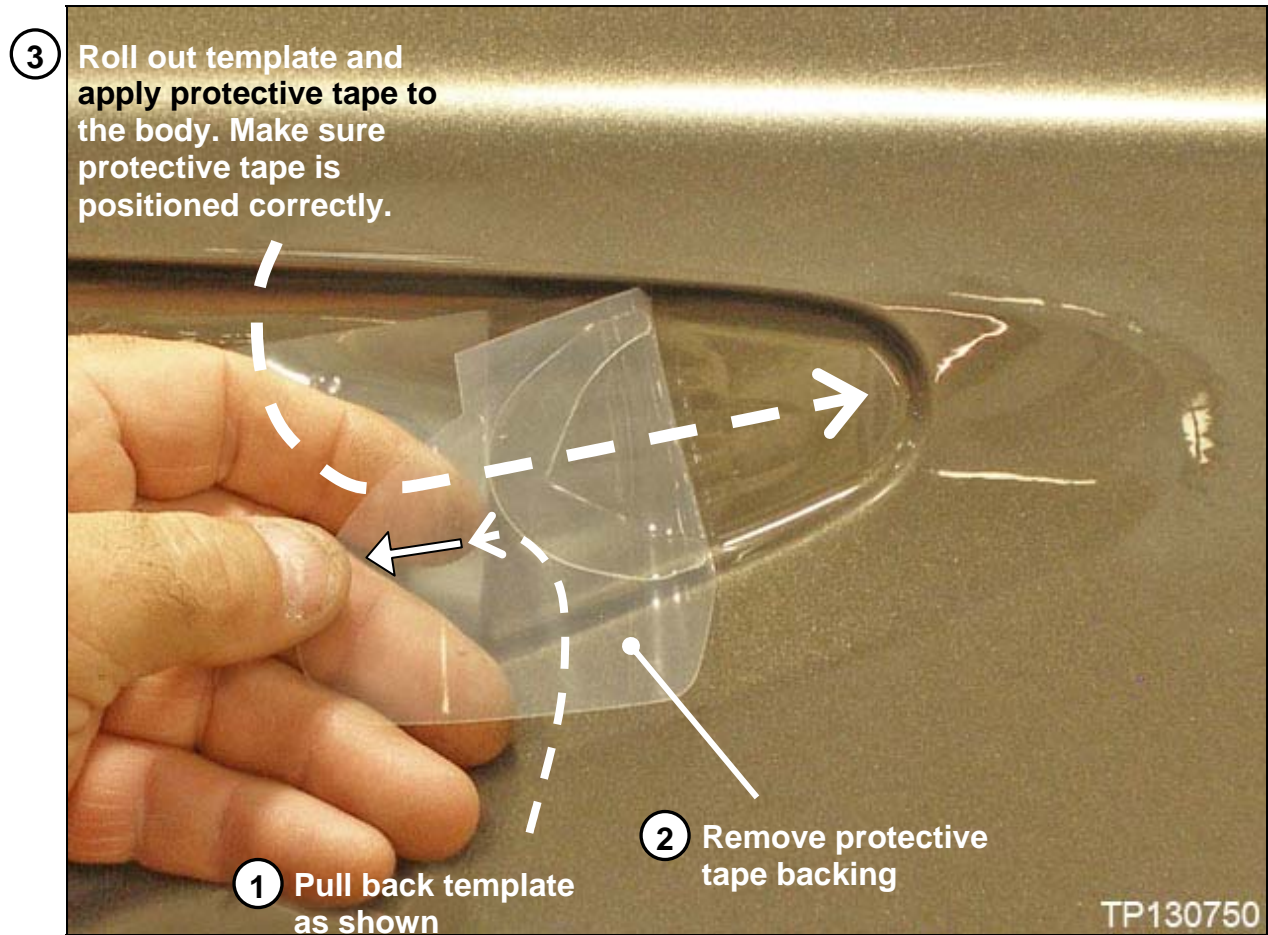


Figure 6

8. Smooth out the protective tape by rubbing the template on top of the tape. Work out any air bubbles (see Figure 7).
 - If necessary, use a suitable body tool to remove any air bubbles.
9. Remove the template (see Figure 7).



Figure 7

- With the template removed, the protective tape should stay on the body and be located where outlined in Figure 8.



Figure 8

10. Carefully reinstall both rear combination lamps.

- Use the backing saved earlier to protect the painted surface while installing the combination lamps (see Figure 9).
- For installation procedure, refer to the **L DRIVER CONTROLS > EXL Exterior Lighting System** section of the ESM, if needed.

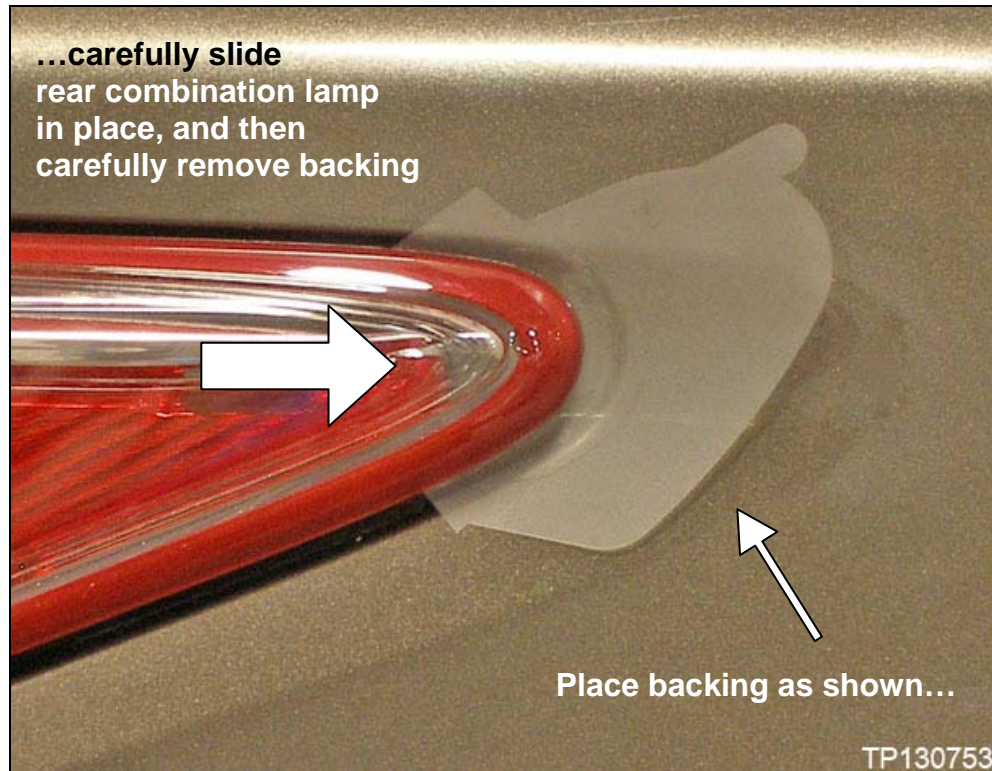


Figure 9

PARTS INFORMATION

DESCRIPTION	PART NUMBER	QUANTITY
PROTECTOR-CHIPPING FRONT, LH	63839-3TA0A	1
PROTECTOR-CHIPPING FRONT, RH	63838-3TA0A	1

When painting is not required

CLAIMS INFORMATION

Submit a Primary Part (PP) type line claim using the following claims coding:

DESCRIPTION	PFP	OP CODE	SYM	DIA	FRT
Install Urethane Tape to both sides without paint	(1)	RX4AAA	ZA	03	0.5

(1) Refer to the electronic parts catalog FAST and use the appropriate rear combination lamp part number (26550-XXXXX) as the Primary Failed Part (PFP).

OR

When painting is required

CLAIMS INFORMATION

Submit a Primary Part (PP) type line claim using the following claims coding:

DESCRIPTION	PFP	OP CODE	SYM	DIA	FRT
Install Urethane Tape to both sides with painting	(1)	RX4DAA	ZA	03	0.3

(1) Refer to the electronic parts catalog FAST and use the appropriate rear combination lamp part number (26550-XXXXX) as the Primary Failed Part (PFP).

- * **On the same repair line**, claim for the Refinish Half Block paint repair operation code and paint expense.

