

Classification:

HA12-011

Reference:

ITB13-021

Date:

June 13, 2013

2011-2012 M37/56; A/C COMPRESSOR NOISE

APPLIED VEHICLE: 2011 – 2012 M56 (Y51)
2011 – 2012 M37 (Y51)

IF YOU CONFIRM:

- A noise (whine, hum, moan, low pitch sound) that can be heard inside the vehicle while the A/C compressor is running.

ACTION:

- Follow the Repair Flow Chart on page 2 and 3 to confirm that this bulletin applies and for repair information.

PARTS INFORMATION
COVER and BRKT of A/C PIPE (Engine room parts)

| DESCRIPTION | PART # | QUANTITY |
|-----------------|-------------|----------|
| COVER-FLEX HOSE | 92419-1PM0A | 1 |
| COVER-FLEX HOSE | 92419-1PM0B | 1 |
| BRKT-PIPE A | 92551-1PM0A | 1 |
| BRKT-TUBE CLIP | 92552-1PM0A | 1 |

A/C AMPLIFIER ASSEMBLY (If applicable)

| APPLICATION | DESCRIPTION | PART # | QUANTITY |
|---|--------------------------|-------------|-----------------|
| See page 3 FLOW CHART For VIN and date information | AMPL ASSY-AIR COND, AUTO | 27760-1MX0A | 1 as applicable |
| | | 27760-1MX0C | |
| | | 27760-1MA9D | |

CLAIMS INFORMATION

Submit a Primary Part (PFP) type line claim using the following claims coding:

| DESCRIPTION | PFP | OP CODE | SYM | DIA | FRT |
|---------------------|-----|---------|-----|-----|-----|
| Replace A/C Bracket | (1) | TX38AA | ZL | 32 | 0.8 |

(1) Refer to the electronic parts catalog (FAST) and use the Cooler Compressor Assy part number (92600-XXXXX) as the Primary Part (PFP).

Or

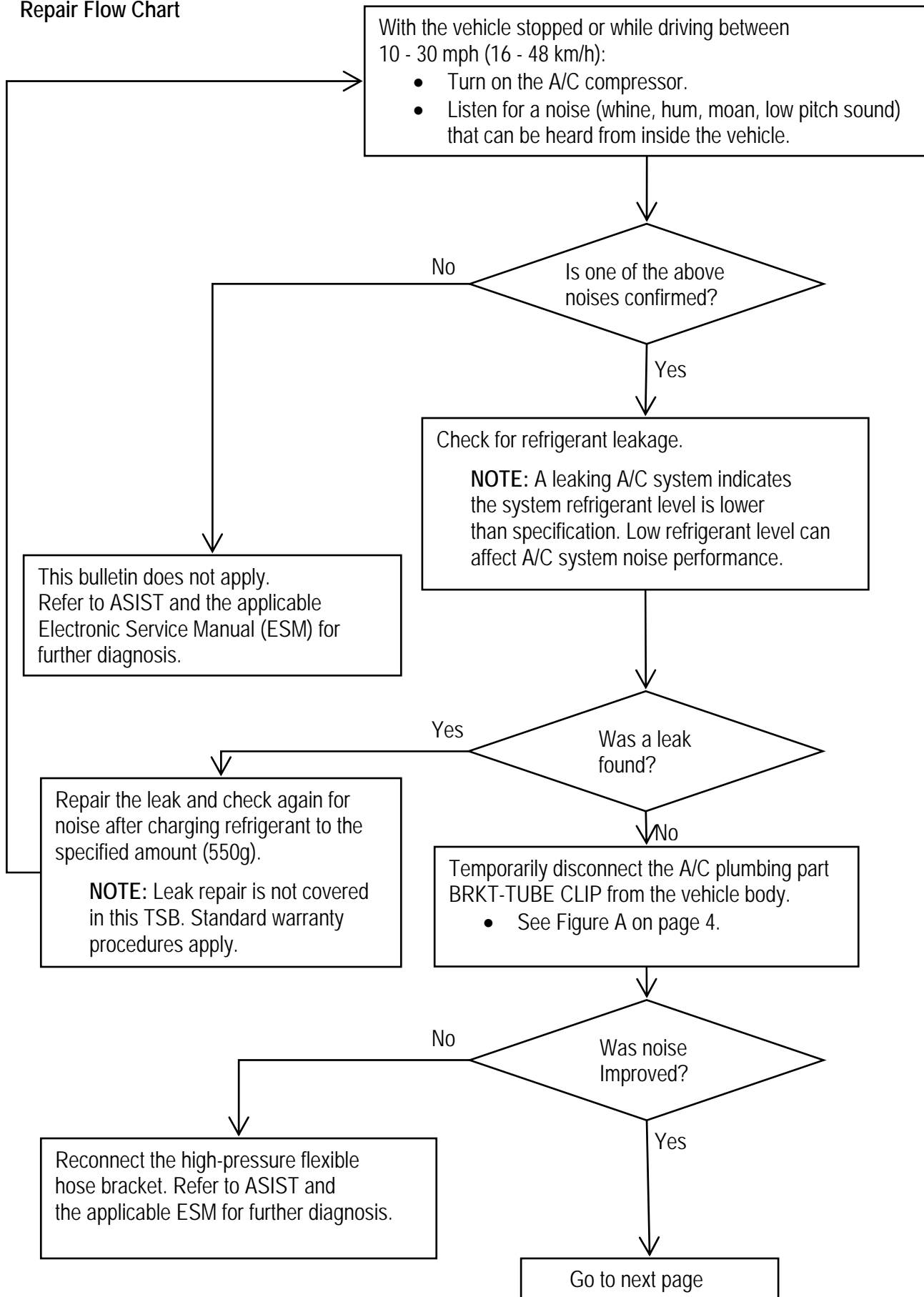
Submit a Primary Part (PFP) type line claim using the following claims coding:

| DESCRIPTION | PFP | OP CODE | SYM | DIA | FRT |
|--|-----|---------|-----|-----|-----|
| Replace A/C Bracket & Auto Air Control AMP | (1) | TX39AA | ZL | 32 | 1.2 |

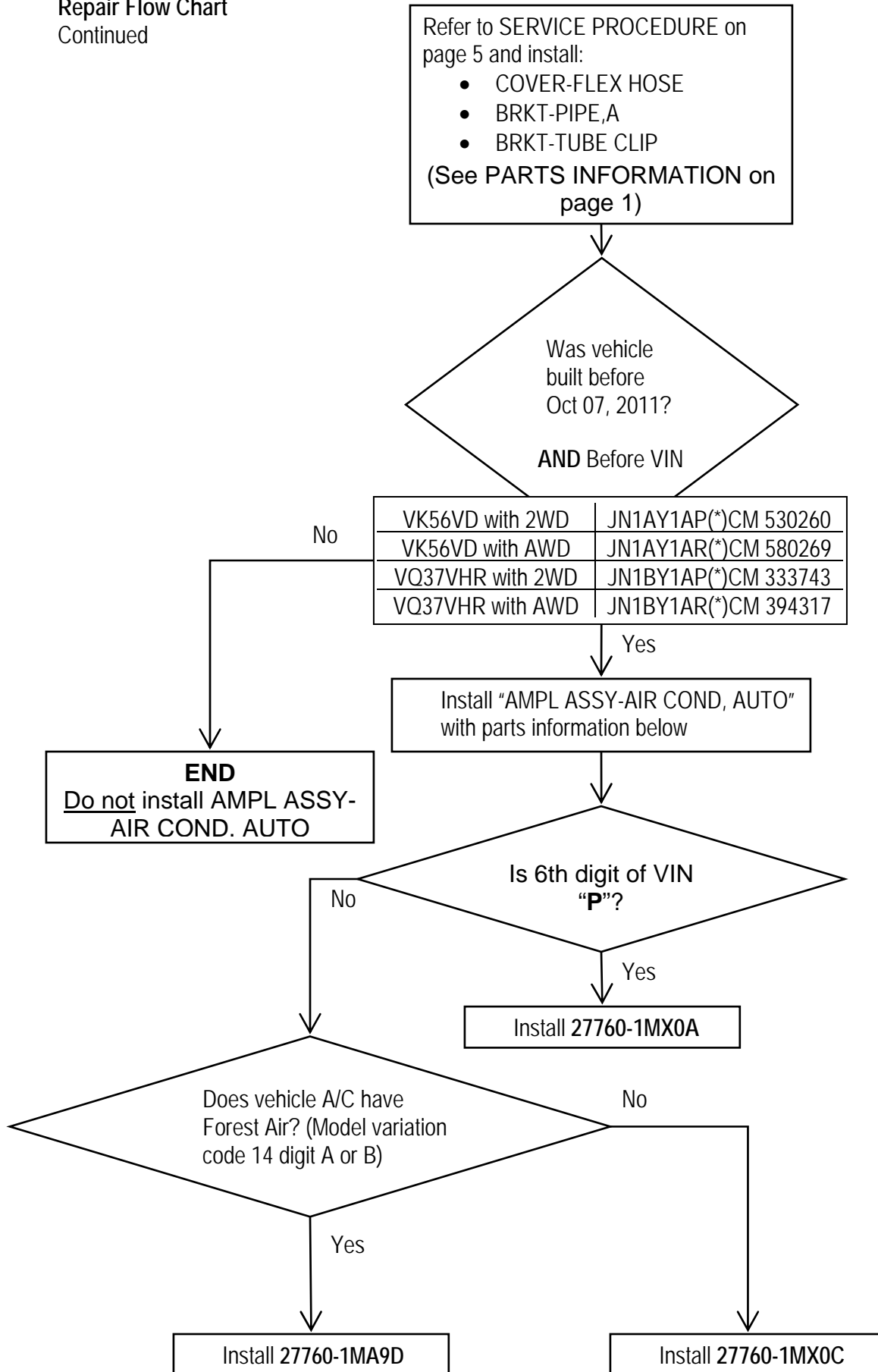
(1) Refer to the electronic parts catalog (FAST) and use the Cooler Compressor Assy part number (92600-XXXXX) as the Primary Part (PFP).

Infiniti Bulletins are intended for use by qualified technicians, not 'do-it-yourselfers'. Qualified technicians are properly trained individuals who have the equipment, tools, safety instruction, and know-how to do a job properly and safely. NOTE: If you believe that a described condition may apply to a particular vehicle, DO NOT assume that it does. See your Infiniti dealer to determine if this applies to your vehicle.

Repair Flow Chart



Repair Flow Chart
Continued



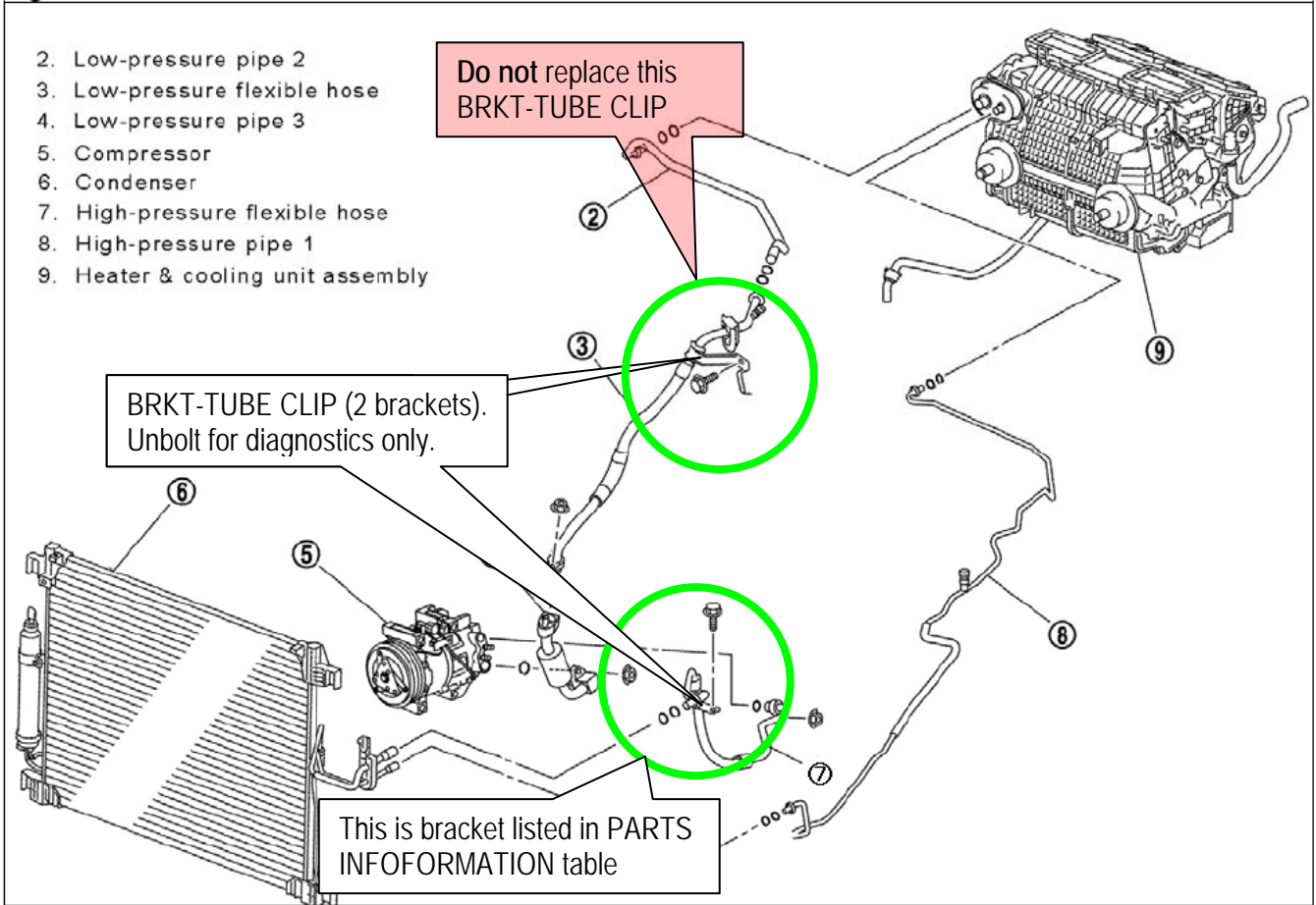


Figure A

SERVICE PROCEDURE

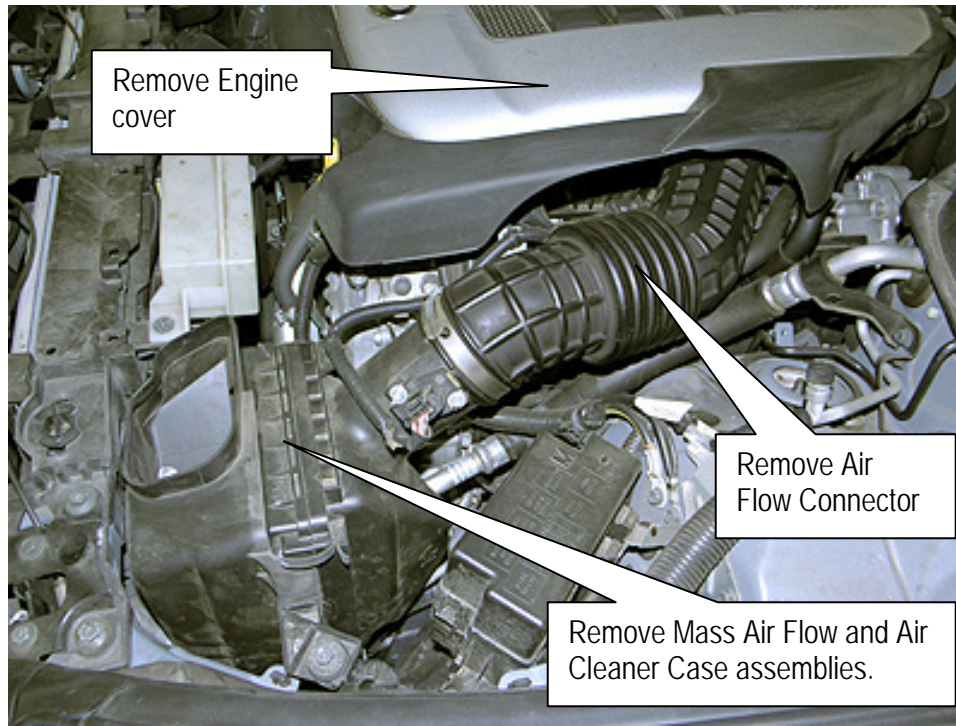


Figure 1

1. Remove Fresh Air Duct that connects both Air Cleaner Case assemblies.
 - Figure 1 shown with Fresh Air Duct already removed.
2. Remove engine cover.
3. Disconnect PCV hose from Air Flow Connector, and then remove air flow connector from throttle body and mass airflow assembly.
4. Remove Mass Air Flow assembly from Air Cleaner Case Assembly for bank 1.
5. Remove Air Cleaner Case assembly to gain access to where condenser lines pass through radiator bulkhead.

6. Unclip high side line and then unbolt low side "BRKT-TUBE CLIP" assembly, remove from line and discard.
 - The BRKT-TUBE CLIP will be replaced with part from PARTS INFORMATION table in step 16.

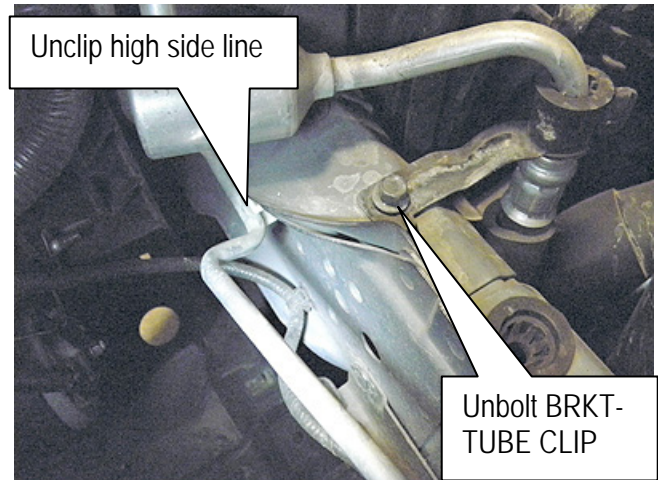


Figure 2

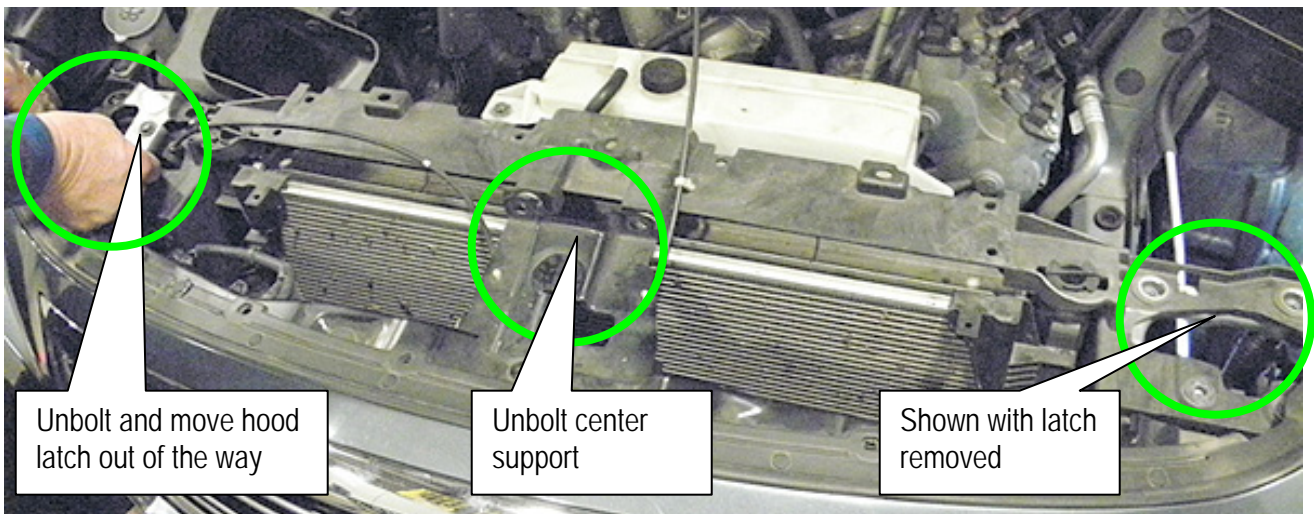


Figure 3

7. Remove both hood latches and unbolt radiator bulkhead center support.

8. Disconnect and remove right side horn.
9. Disconnect refrigerant sensor harness connector.

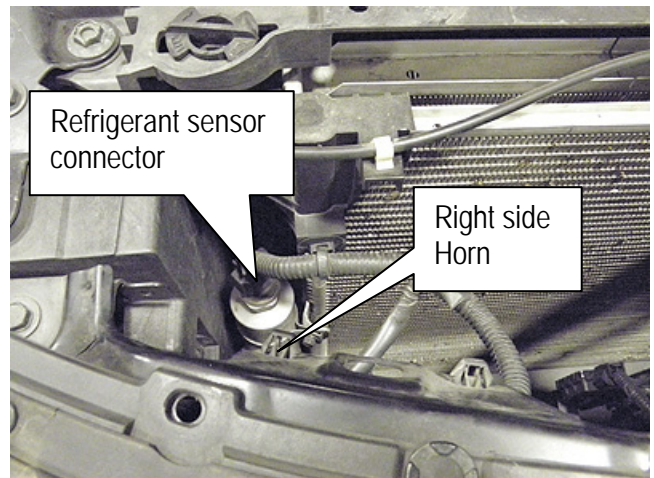


Figure 4

10. Unbolt condenser refrigerant line "BRKT-PIPE A", but do not remove from the lines yet.
- The refrigerant lines each have a step that locates BRKT-PIPE A and will prevent it from sliding forward.
 - Moving the condenser forward will allow BRKT-PIPE A to be removed.

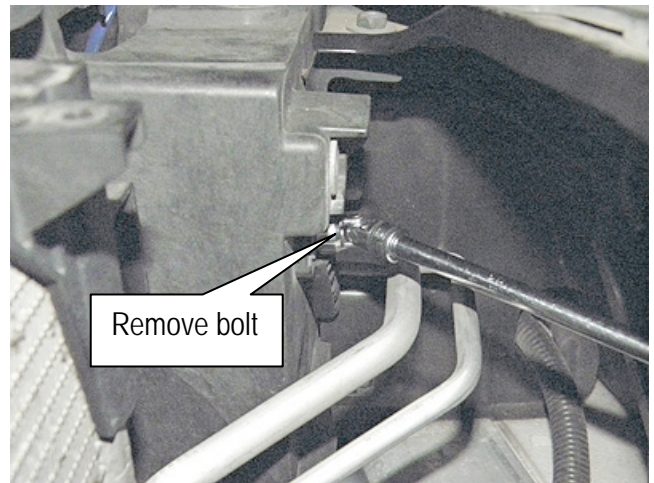


Figure 5

NOTE: Figure 6 shows BRKT-PIPE A from the top with the driver's side hood latch removed.

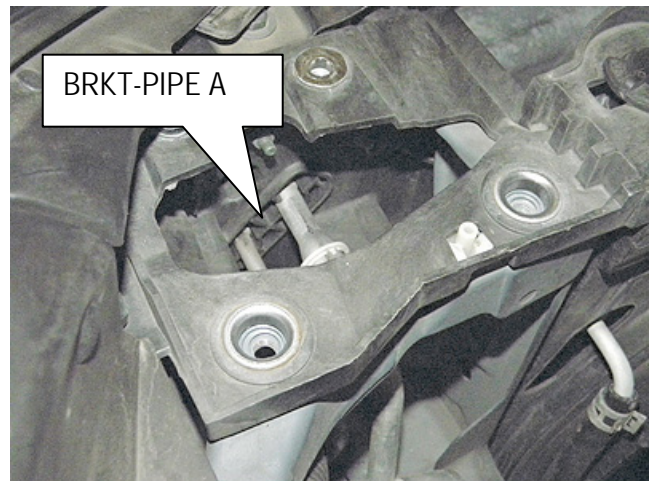


Figure 6

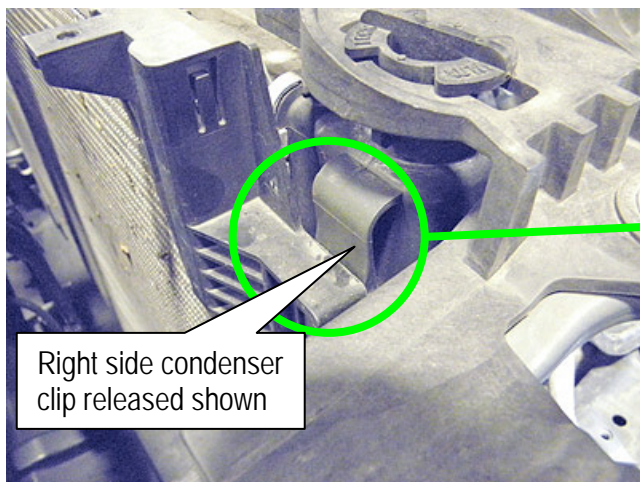


Figure 7

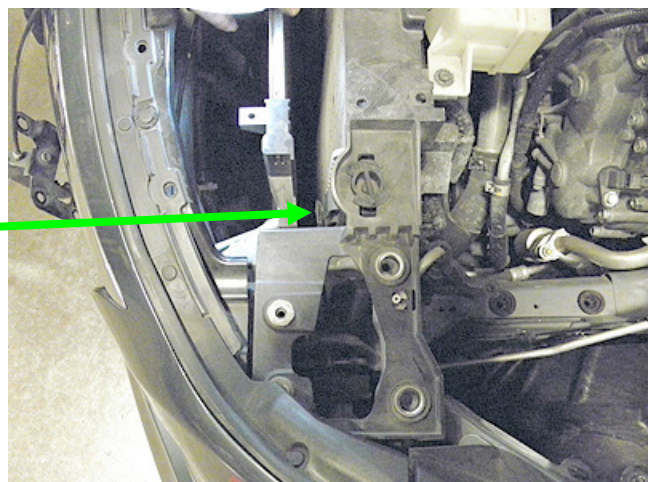


Figure 8

11. Unclip **both sides** of the condenser from the top and pull it forward slightly, then lift it up to clear the condenser's lower mounts.
- This will allow the condenser and A/C line to move forward and allow BRKT-PIPE A to be removed.

12. Remove BRKT-PIPE A from the A/C lines and discard.
 - BRKT-PIPE A is locked at center between the lines.
 - Use a pick to push tabs to allow BRKT-PIPE A to be unlocked.

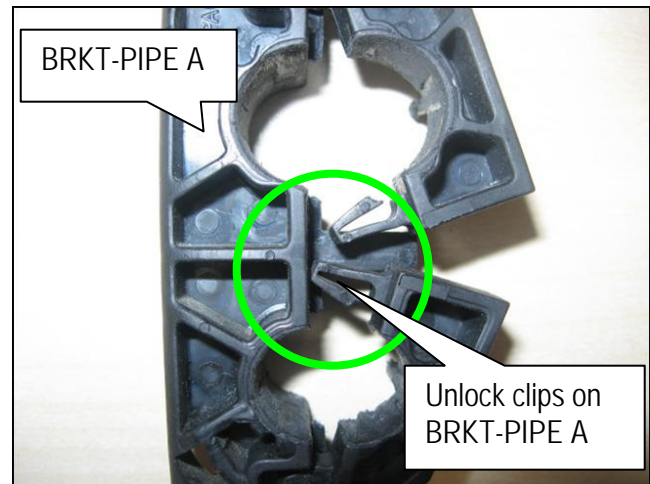


Figure 9

14. Install COVER-FLEX HOSE (part numbers 92419 1PM0B and 92419 1PM0A) onto both high and low side lines where they pass through the bulkhead.

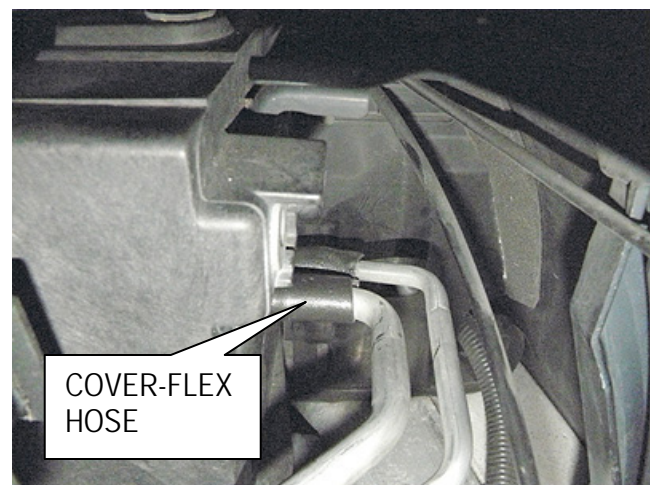


Figure 10

15. Snap new BRKT-PIPE A, from PARTS INFORMATION, back on to A/C lines.
16. Reinstall in reverse order.

A/C Amplifier Installation (if applicable)

IMPORTANT: Before removing the A/C Auto Amp perform the “READ CONFIGURATION” before, and then “WRITE CONFIGURATION” after replacing the A/C Auto Amp.

1. If the vehicle is within the correct VIN range in the flow chart on page 3 and bulletin applies, install A/C amplifier from PARTS INFORMATION table.
 - **Before** removing the A/C Auto Amp Refer to Electronic Service Manual (ESM) for procedure to replace A/C auto amp:
I: VENTILATION, HEATER & AIR CONDITIONER \ HAC – Heater & Air Conditioning System \ REMOVAL AND INSTALLATION \ A/C AUTO AMP \ Removal And Installation.