



SERVICE BULLETIN

Classification:

BT12-023

Reference:

NTB13-063

Date:

June 7, 2013

2009 - 2013 MAXIMA; FRONT PASSENGER SEAT ABOVE NORMAL VIBRATION AT HIGHWAY SPEEDS

APPLIED VEHICLE: 2009 -2013 Maxima (A35)

APPLIED VINs and

DATES: Go to page 4

IF YOU CONFIRM:

The front passenger seatback has a greater than normal vibration at highway speeds

AND

There are no other shake or vibrations with the vehicle.

ACTION:

Use the **REPAIR FLOW CHART** on page 3 to determine the repair(s) to be performed.

NOTES:

- The description under **IF YOU CONFIRM** must exist for this bulletin to apply.
- If determined the passenger seatback frame will be replaced:
 - The headrest, seatback pad, seatback frame bolts, and side airbag nuts must also be replaced.
 - The seatback trim and seatback board will be reused.
- Do not replace the seat cushion and frame assembly or complete seat assembly.

IMPORTANT: The purpose of **ACTION** (above) is to give you a quick idea of the work you will be performing. You **MUST** closely follow the entire **REPAIR FLOW CHART** as it contains information that is essential to successfully completing this repair.

Nissan Bulletins are intended for use by qualified technicians, not 'do-it-yourselfers'. Qualified technicians are properly trained individuals who have the equipment, tools, safety instruction, and know-how to do a job properly and safely. NOTE: If you believe that a described condition may apply to a particular vehicle, DO NOT assume that it does. See your Nissan dealer to determine if this applies to your vehicle.

PARTS INFORMATION

DESCRIPTION	PART #	QUANTITY
Frame & Device Assy - Front Seat Back, RH	87604-9DA6E	1
Pad-Front Seat Back (w/ heated seat)	87611-9DA6B	1
Pad-Front Seat Back (w/o heated seat)	87611-9DA4B	1
Head Rest Assy-Front Seat	*	1
Brkt-Front Seat Adjuster ***	87414-9N00B	1 **
Rod-air bag, front seat (side airbag nuts)	87332-9N00B	2
Bolt (seatback frame bolt)	87799-9N00B	4
Rod-Air Bag, Front Seat (rod bolt)	87607-9N00B	2

* Look up the current passenger head rest assembly Part Number (P/N) by VIN in WINFAST or equivalent Electronic Parts Catalog. Find this "Parts Catalog" P/N in **Table A** below. Order the new P/N listed to the right.

** Determine if this part is needed. Refer to the **REPAIR FLOW CHART** on page 3.

*** Seat bracket: Includes mounting hardware.

Table A

If Parts Catalog Passenger Head Rest P/N is:	Order Head Rest P/N:	If Parts Catalog Passenger Head Rest P/N is:	Order Head Rest P/N:
86400-9N00B or 86400-ZX70B	86400-9DA6B	86400-9DB0E	86400-9DB6E
		86400-9N10A	86400-9DB6A
86400-9N00C	86400-9DA6C	86400-9N20B or 86400-ZX83B	86400-9DC6B
86400-9NA0E or 86400-9DA0E	86400-9DA6E		86400-9N20C
86400-9N10B or 86400-ZX80B	86400-9DB6B	86400-9DC0E	86400-9DC6E
		86400-9N20A	86400-9DC6A
86400-9N10C	86400-9DB6C	86400-ZY90D	86400-9DC6D

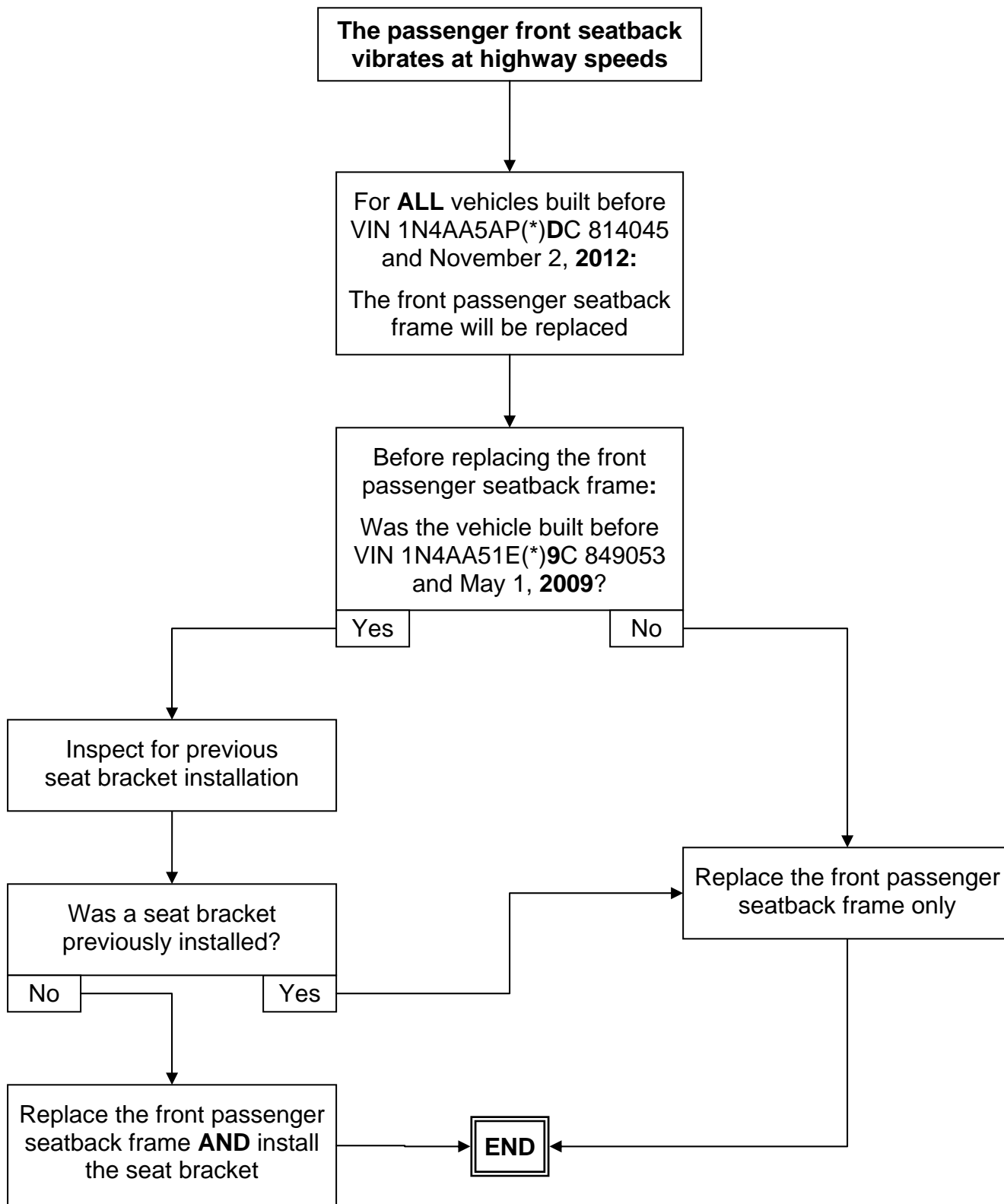
CLAIMS INFORMATION

Submit a Primary Part (PP) type claim using the following claims coding:

DESCRIPTION	PFP	OP CODE	SYM	DIAG	FRT
RPL RIGHT SEAT BACK FRAME ASS'Y	87604-9DA6E	VH22AA	ZN	32	(1)

(1) Reference the current Nissan Warranty Flat Rate Manual and use the indicated flat rate time.

REPAIR FLOW CHART



SERVICE PROCEDURE

IMPORTANT: Follow all cautions, warnings, and notes in the Electronic Service Manual (ESM) when working on or near a Supplemental Restraint System (SRS), such as an airbag.

NOTE:

- Use suitable protective covering where needed during seat assembly removal and installation.
- Perform all repairs in a clean environment.

For **ALL** vehicles built before VIN 1N4AA5AP(*)DC 814045 and November 2, **2012**:

Replace the front passenger seatback frame.

- The front passenger head rest also needs to be replaced with this repair (see **Table A** on page 3).
- Refer to the **J BODY INTERIOR > Seat** section of the ESM, if needed.

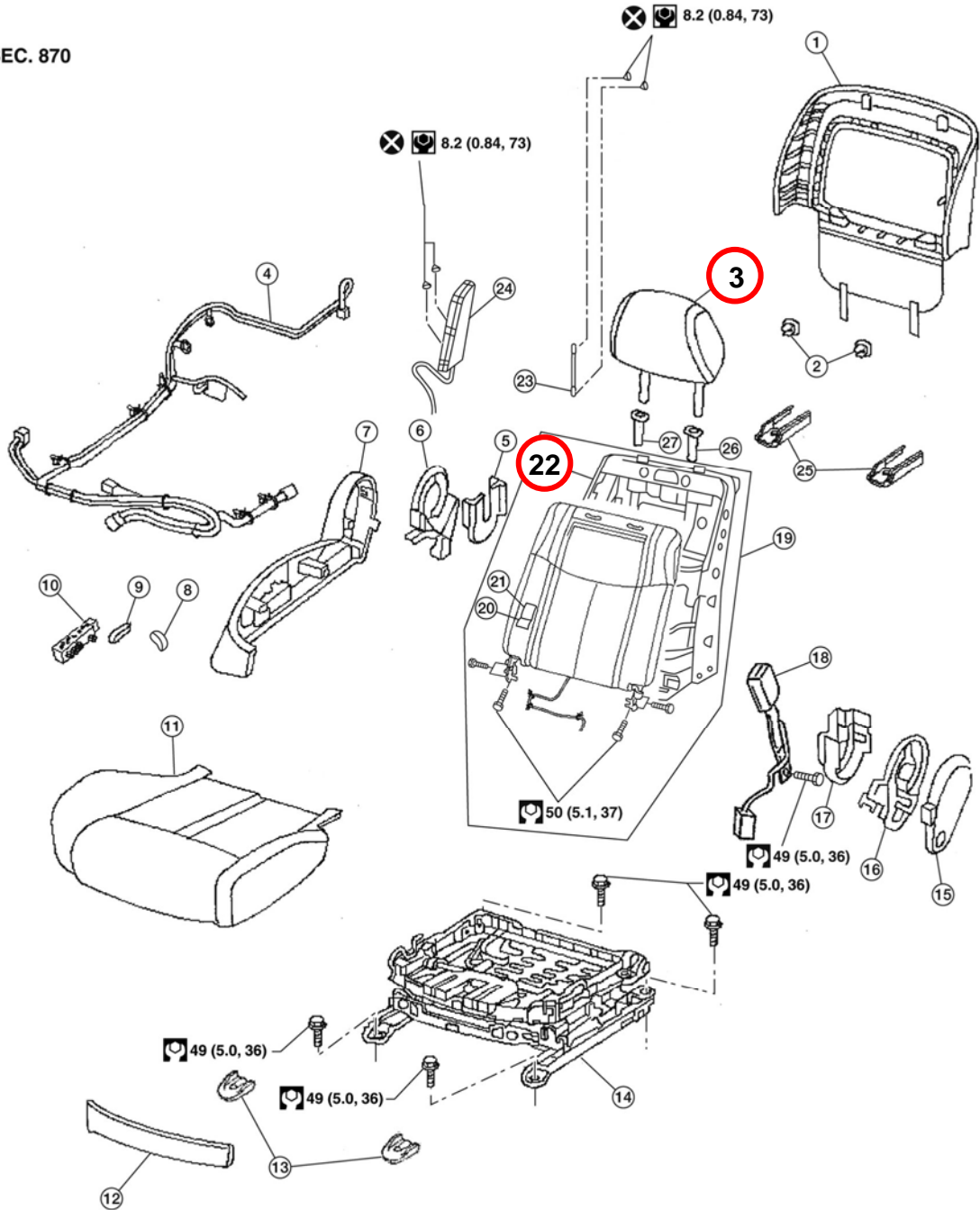
In addition to above, for vehicles built before VIN 1N4AA51E(*)9C 849053 and May 1, **2009**:

Check for seat bracket installation.

- If a seat bracket is found, reuse it.
- If a seat bracket is not found, install one.
 - The seat bracket can be checked for and installed during seatback frame replacement.
 - Refer to page 6 for installation tips.

Example of Front Passenger Seat

SEC. 870



- | | | |
|-----------------------------------|---|--------------------------------------|
| 1. Seatback board | 2. Seatback board clips | 3. Headrest |
| 4. Seat harness | 5. Seat cushion inner finisher inside RH | 6. Recline device inner cover |
| 7. Seat cushion outer finisher RH | 8. Seat recline knob | 9. Seat slide and lifter switch knob |
| 10. Power seat switch | 11. Seat cushion assembly | 12. Seat cushion front finisher |
| 13. Front slide cover | 14. Seat frame assembly | 15. Seat cushion outer finisher LH |
| 16. Recline mechanism inner cover | 17. Seat cushion inner finisher inside LH | 18. Seat belt buckle |
| 19. Seatback assembly | 20. Seatback pad | 21. Seatback trim |
| 22. Seatback frame | 23. Chute rod | 24. Side air bag module |
| 25. Rear side cover | 26. Headrest holder (locked) | 27. Headrest holder (free) |

Tips on Seat Bracket Installation

NOTES:

- Although pictures show the seat assembly in the vehicle, all repairs should be performed with the seat removed.
- The seat bracket should be installed after seatback frame replacement.



Seat bracket

1. Remove the passenger seat cushion outer finisher as follows:
 - a. While carefully pulling out on the center of the finisher, insert a suitable tool in the gap, and then carefully pry between it and the inside finisher (see Figure 1).

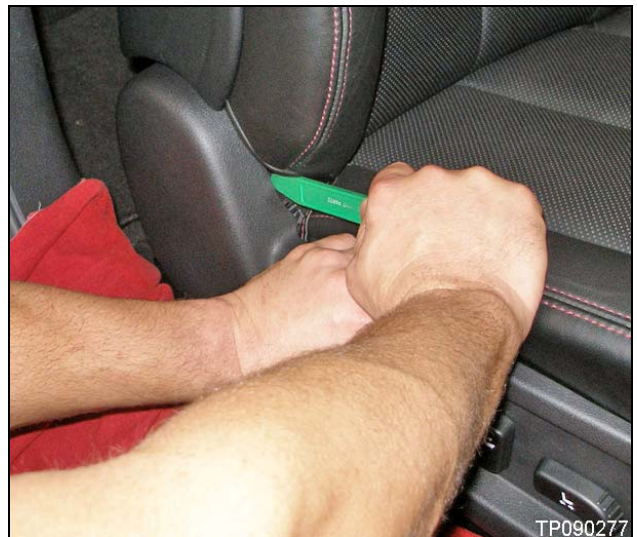


Figure 1

- b. Work your way around the back of the finisher, continuing to pull while pushing on each clip point. See Figure 2 and Figure 3 (next page) for clip point locations.



Figure 2

- c. With the rear of the finisher unclipped, carefully pull more on the finisher to unfasten the four side clips. See Figure 3 for the four side clip locations.

NOTE: The front clip is not unfastened at this time, even though Figure 3 shows it is.

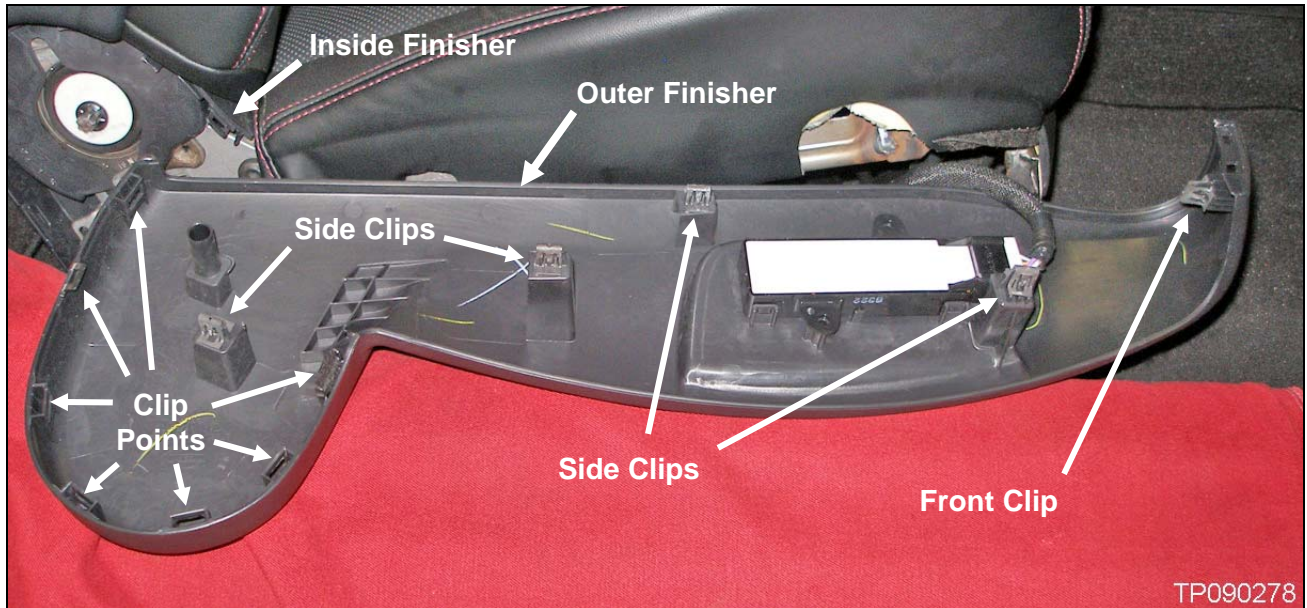


Figure 3

- d. To unfasten the front clip, grab and pull on the front inner edge of the finisher while prying between it and the frame it's clipped to (see Figure 4).

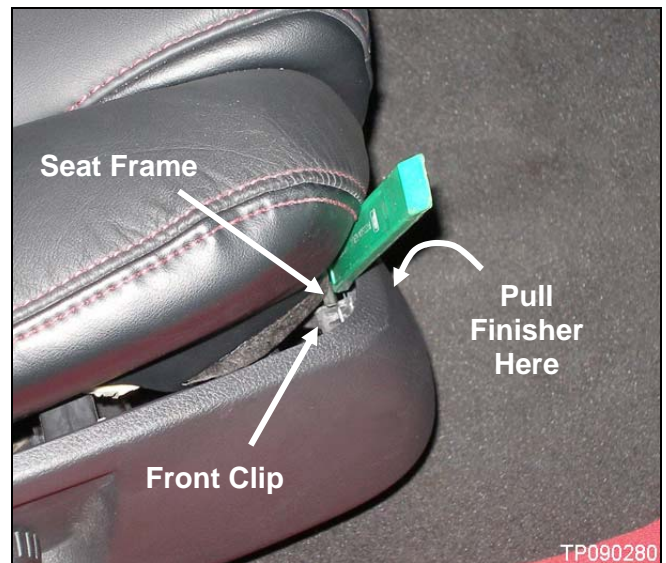


Figure 4

2. Pop the stud (supplied with the seat bracket) through the hole at the rear of the Outboard (O/B) track from underneath, and then hold it in place (see Figure 5).

NOTE: It may be easier to install and hold the stud with a strong magnet.

3. Position the bracket with the stud through its lower hole, and then install the nut and new TORX bolt finger tight (see Figure 5).

NOTES:

- A nut and TORX bolt come with the seat bracket.
- Do not reuse the old TORX bolt.

4. Torque the bolt first, and then the nut. Figure 6 shows the bracket installed.

- Torque the bolt first to 45-55 N•m (4.6-5.6 kg-m, **33-41 ft lbs**).
- Torque the nut to 20.6-30.6 N•m (2.1-3.1 kg-m, **15-23 ft lbs**).

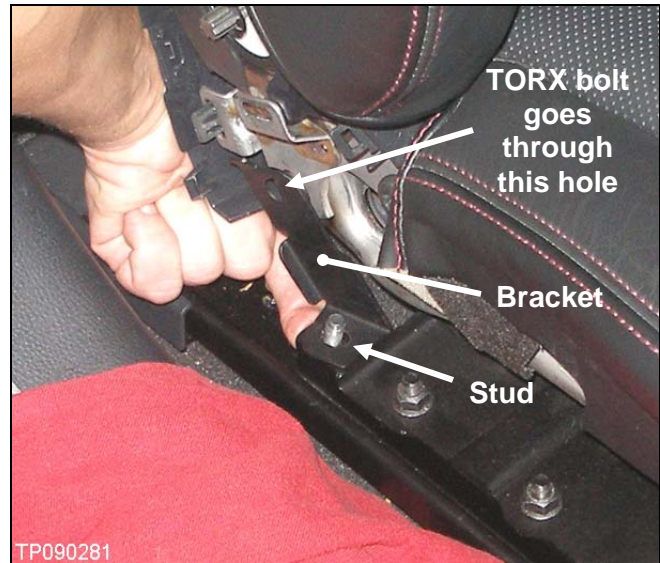


Figure 5

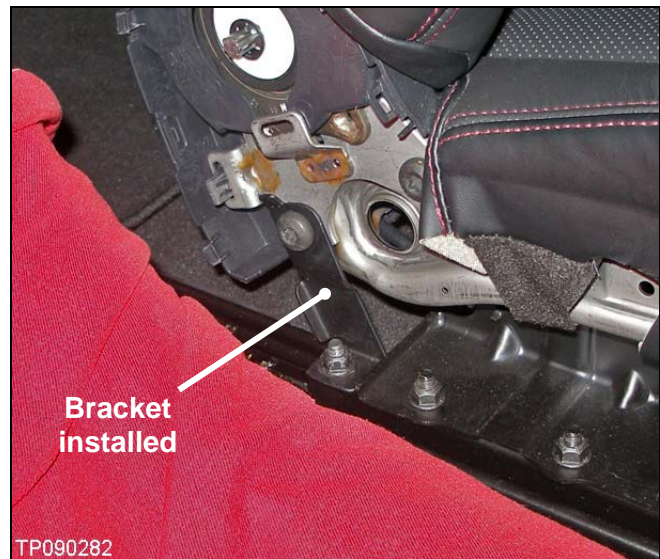


Figure 6