



# SERVICE BULLETIN

Classification:

BT13-009

Reference:

NTB13-048

Date:

April 30, 2013

## 2013 ALTIMA SEDAN; FRONT DOORS RUB LOWER BODY CENTER MUD GUARD

**APPLIED VEHICLE:** 2013 Altima Sedan (L33)

### IF YOU CONFIRM:

The front lower corner of either front door, when opened or closed, rubs the center mud guard (see Figure 1, green arrow)

### AND

There is no body damage causing this issue.

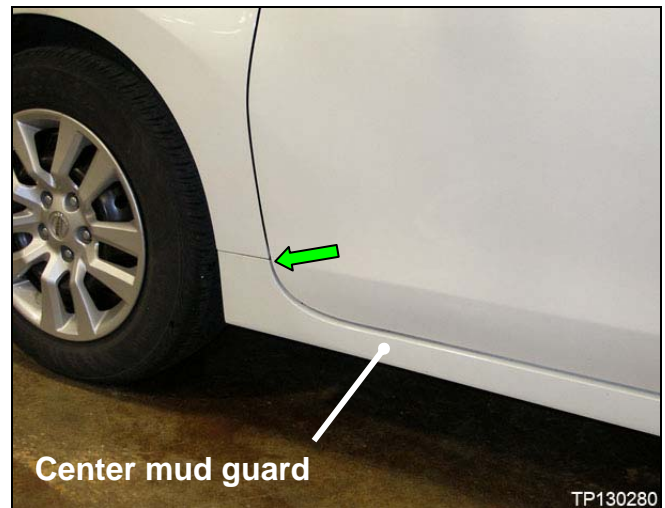


Figure 1

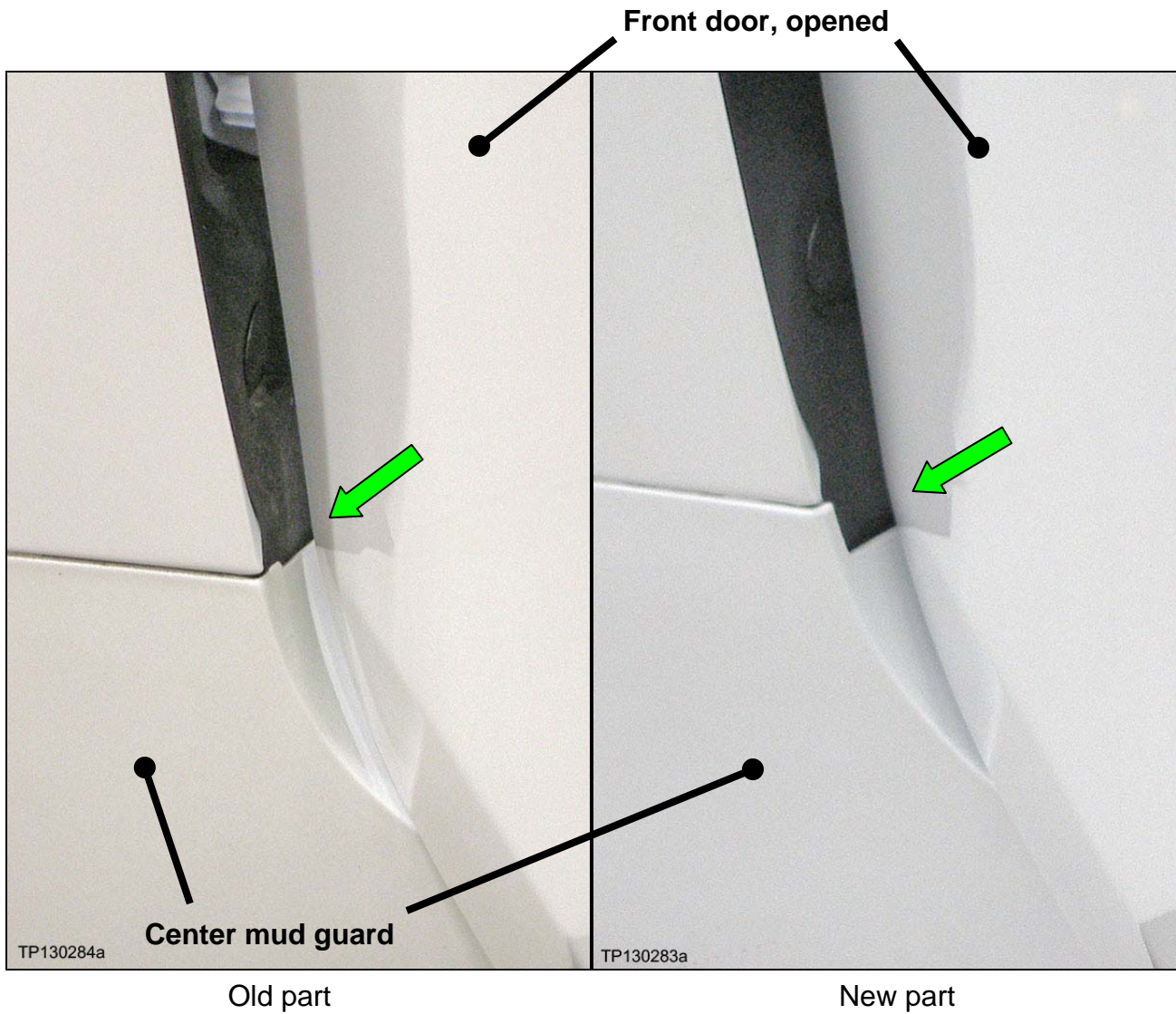
### ACTION:

Replace the center mud guard(s) with the one(s) listed in **PARTS INFORMATION**.

- Replace only the center mud guard with the condition stated above.
- DO NOT attempt to adjust the front door or any other body parts for this issue, if it should occur.
- This bulletin does not apply if the center mud guard is the new style part. See sample photos on page 2.

Refer to the **K BODY EXTERIOR, DOORS, ROOF & VEHICLE SECURITY > EXT Exterior** section of the Electronic Service Manual (ESM) for removal and installation.

Nissan Bulletins are intended for use by qualified technicians, not 'do-it-yourselfers'. Qualified technicians are properly trained individuals who have the equipment, tools, safety instruction, and know-how to do a job properly and safely. NOTE: If you believe that a described condition may apply to a particular vehicle, DO NOT assume that it does. See your Nissan dealer to determine if this applies to your vehicle.



To inspect, open the front door.

**PARTS INFORMATION**

DESCRIPTION	PART NUMBER	QTY
MUDGUARD-CENTER, FRONT LH (Moulding)*	76853-3TA1H	1 **
MUDGUARD-CENTER, FRONT RH (Moulding)*	76852-3TA1H	1 **

\* This part must be painted.

\*\* As needed.

## CLAIMS INFORMATION

### Right Side

Submit a Primary Part (PP) type claim using the following claims coding:

DESCRIPTION	PFP	OP CODE	SYM	DIA	FRT
RPL ONE SILL SPOILER	(1)	UT24AA	ZL	45	(2)
Refinish Block Rocker Sill		ZK3HAA			
Preparation and Mixing Time		ZZ99AA			

- (1) Reference the Parts Information Table and use the applicable **Right Side Moulding** Assembly Part Number as the Primary Failed Part.
- (2) Reference the current Nissan Warranty Flat Rate Manual and use the indicated flat rate time.

OR

### Left Side

Submit a Primary Part (PP) type claim using the following claims coding:

DESCRIPTION	PFP	OP CODE	SYM	DIA	FRT
RPL ONE SILL SPOILER	(1)	UT24AA	ZL	45	(2)
Refinish Block Rocker Sill		ZK4HAA			
Preparation and Mixing Time		ZZ99AA			

- (1) Reference the Parts Information Table and use the applicable **Left Side Moulding** Assembly Part Number as the Primary Failed Part.
- (2) Reference the current Nissan Warranty Flat Rate Manual and use the indicated flat rate time.

OR

### Both Sides

Submit a Primary Part (PP) type claim using the following claims coding:

DESCRIPTION	PFP	OP CODE	SYM	DIA	FRT
RPL ONE SILL SPOILER	(1)	UT24AA	ZL	45	(2)
RPL ONE SILL SPOILER		UT24AA			
Refinish Block Rocker Sill Right Side		ZK3HAA			
Refinish Block Rocker Sill Left Side		ZK4HAA			
Preparation and Mixing Time		ZZ99AA			

- (1) Reference the Parts Information Table and use the applicable **Right or Left Side Moulding** Assembly Part Number as the Primary Failed Part.
- (2) Reference the current Nissan Warranty Flat Rate Manual and use the indicated flat rate time.

### **Expense Code:**

EXPENSE CODE	DESCRIPTION	MAX AMOUNT
019	Paint and Materials	(1)

- (1) Calculate the Material Allowance as indicated in the Paint general information.