

Classification:

EC11-005b

Reference:

ITB11-018b

COPYRIGHT © NISSAN NORTH AMERICA, INC.

Date:

January 28, 2013

## 2007 – 2008 G35, 2008 EX35 AND 2009 – 2010 FX35; ENGINE HESITATION OR STOPS RUNNING AT IDLE OR VERY LOW SPEEDS

This bulletin has been amended to include additional Part Numbers in Table "A" and to change the reprogramming procedure to CIII plus. Please discard any previous versions.

**APPLIED VEHICLES:** 2007 – 2008 G35 Sedan (V36)  
                                   2007 G35 Coupe (CV35)  
                                   2008 EX35 (J50)  
                                   2009 – 2010 FX35 (S51)

### IF YOU CONFIRM:

That the customer has experienced or is experiencing:

- Engine hesitation at idle or very low speeds, and/or
- Engine speed drops lower than expected when decelerating or coming to a stop, and/or
- Engine stops running at idle or very low vehicle speeds (parking lot maneuvers), but can be restarted.

**NOTE:** This incident may occur immediately after an oil change.

### ACTION:

1. Refer to Step 6 in the Service Procedure to confirm this bulletin applies to the vehicle you are working on.
2. If this bulletin applies, reprogram the ECM.

### CLAIMS INFORMATION

Submit a Primary Part (PP) type line claim using the following claims coding:

DESCRIPTION	PFP	OP CODE	SYM	DIA	FRT
Reprogram ECM	(1)	DE97AA	HD	32	(2)

- (1) Reference the Repair Order and use the current ECM P/N written down in Step 6 of the Service Procedure as the PFP.
- (2) Reference the current Infiniti Warranty Flat Rate Manual and use the indicated FRT.

**IMPORTANT:** The purpose of ACTION (above) is to give you a quick idea of the work you will be performing. You **MUST** closely follow the entire Service Procedure as it contains information that is essential to successfully completing this repair.

Infiniti Bulletins are intended for use by qualified technicians, not 'do-it-yourselfers'. Qualified technicians are properly trained individuals who have the equipment, tools, safety instruction, and know-how to do a job properly and safely. NOTE: If you believe that a described condition may apply to a particular vehicle, DO NOT assume that it does. See your Infiniti dealer to determine if this applies to your vehicle.

## SERVICE PROCEDURE

### NOTE:

- Most instructions for reprogramming with CONSULT-III plus (C-III plus) are displayed on the CONSULT PC screen.
- If you are not familiar with the reprogramming procedure, [click here](#). This will link you to the "CONSULT- III plus (C-III plus) ECM Reprogramming" general procedure.
- Take the vehicle for a 10 minute drive in order to meet the following Idle Air Volume Learn (IAVL) conditions:
  - Engine coolant temperature: 70 -100°C (158 - 212°F)
  - Battery voltage: More than 12.9V (At idle)
  - Transmission: Warmed up



Figure A

- After reprogramming is complete, you will be required to perform Throttle Valve Closed Position, Idle Air Volume Learn, Accelerator Closed Position, and DTC erase.

### CAUTION:

- Connect a battery charger to the vehicle battery.  
If the vehicle battery voltage drops below 12.0V or above 15.5V during reprogramming, the ECM may be damaged.
- Be sure to turn OFF all vehicle electrical loads.  
If a vehicle electrical load remains ON, the ECM may be damaged.
- Be sure to connect the AC Adapter.  
If the CONSULT PC battery voltage drops during reprogramming, the process will be interrupted and the ECM may be damaged.
- Turn off all external Bluetooth® devices (e.g., cell phones, printers, etc.) within range of the CONSULT PC and the VI. If Bluetooth® signal waves are within range of the CONSULT PC during reprogramming, reprogramming may be interrupted and the ECM may be damaged.

1. Connect the CONSULT PC to the vehicle to begin the reprogramming procedure.
2. Open ASIST on the CONSULT PC and start C-III plus.
3. Wait for the plus VI to be recognized / connected.
  - The serial number will display when the plus VI is recognized / connected.
4. Select **Re/programming, Configuration**.

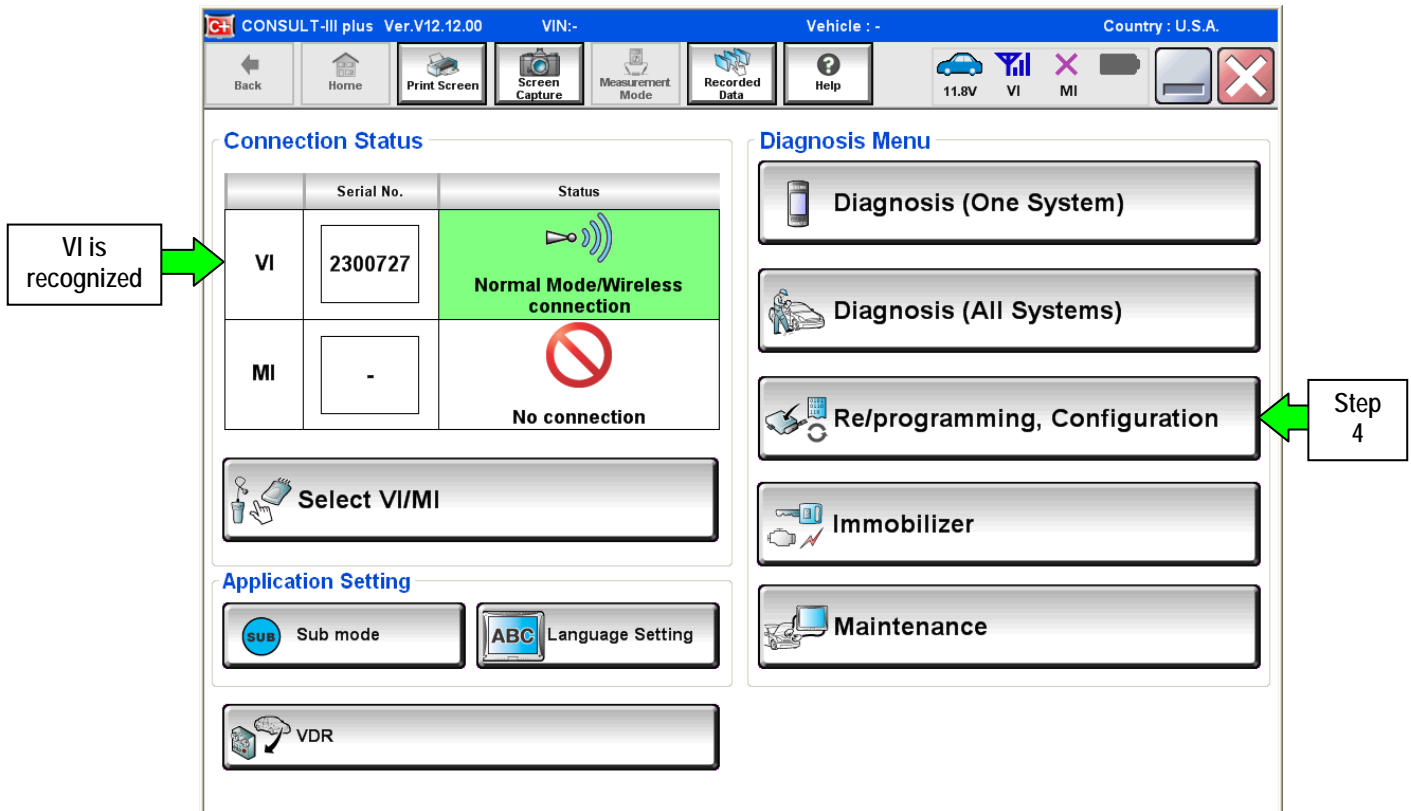


Figure 1

- Follow the on-screen instructions and navigate the C-III plus to the screen shown in Figure 2 on the next page.

## IMPORTANT:

During the initial "Reprogramming Confirmation" set-up, if you get this screen (Figure 1A):

- Select **Delete**, then
- Select **Other Operation**, then
- Continue with the reprogramming procedure.

**NOTE:** If reprogramming does not complete, this screen can display for reprogramming recovery. Do not select Delete if this screen displays during reprogram recovery.

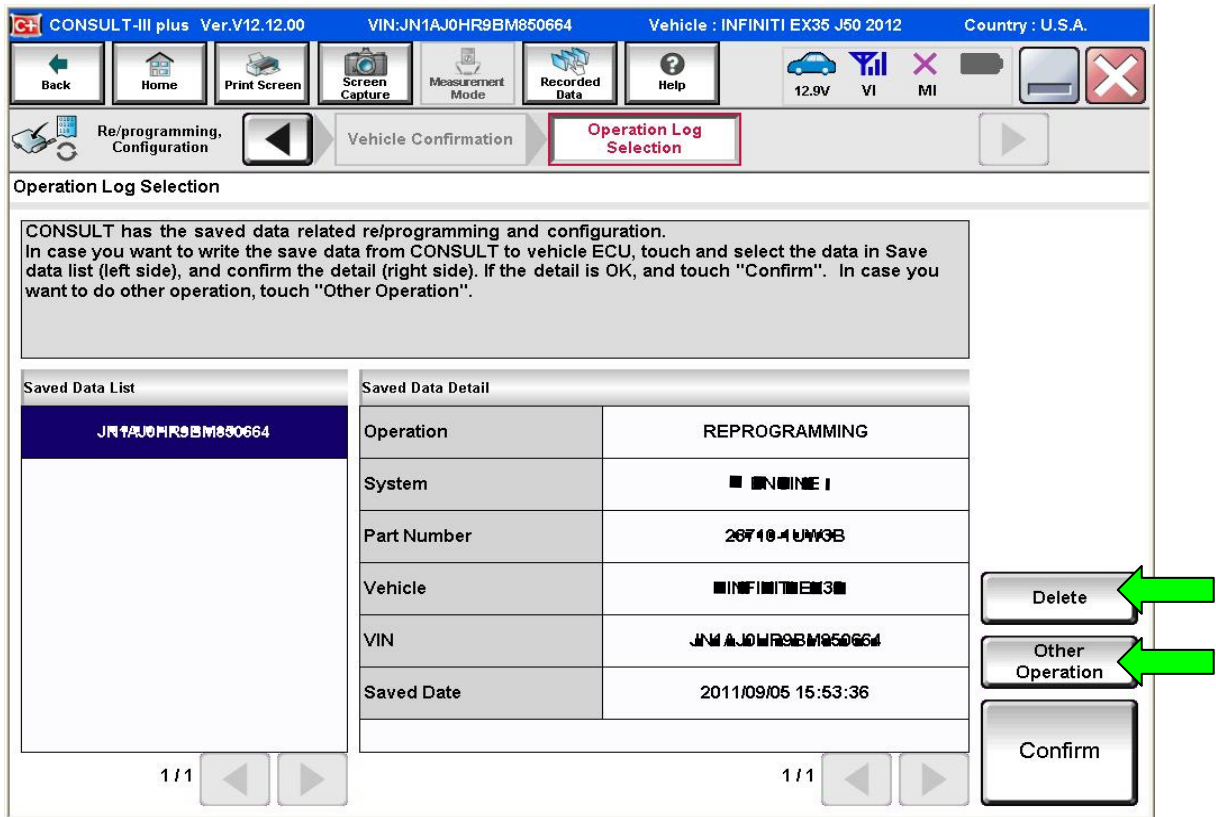


Figure 1A

6. When you get to the screen shown in Figure 2, confirm this bulletin applies as follows.
  - A. Find the ECM Part Number and write it on the repair order.

**NOTE:** This is the current ECM Part Number (P/N).

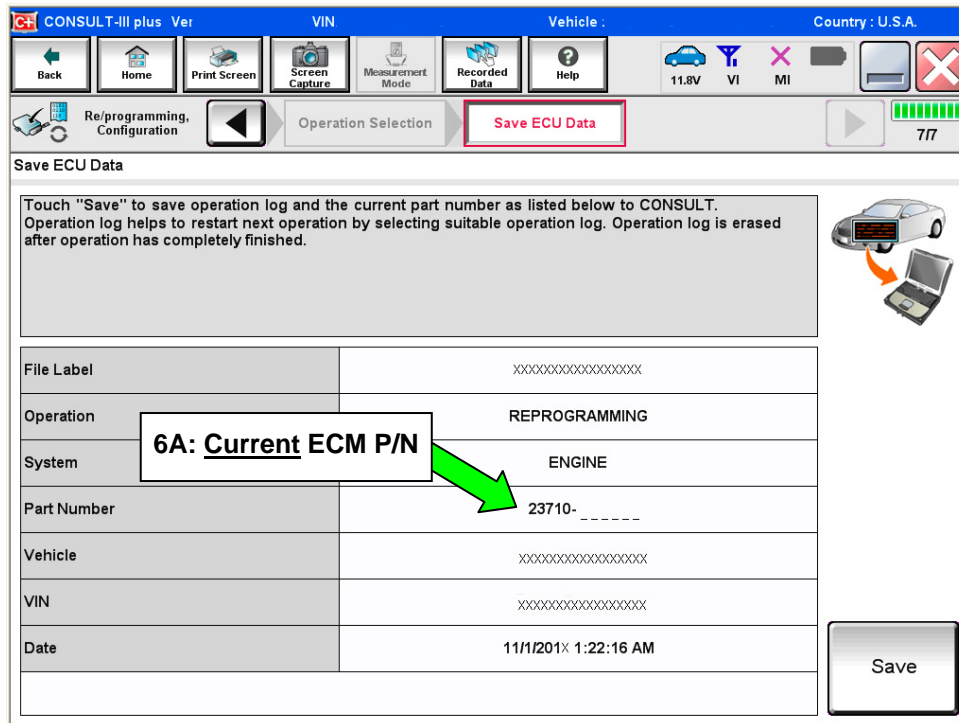


Figure 2

- B. Compare the P/N you wrote down to the numbers in the **Current ECM Part Number** column in Table A on the next page.
  - If there is a match, this bulletin applies. Continue with the reprogramming procedure.
  - If there is not a match, this bulletin does not apply. Close C-III plus and refer to ASIST for further diagnostic information.

Table A

MODEL	VEHICLE CONFIGURATION	CURRENT ECM P/N: 23710 -
2007 G35 Sedan and Coupe	2WD ASCD	JK60A, JK60B, JK60C, JK60D, JK64A, JK64B, JK64C
	2WD ICC	JK61A, JK61B, JK61C, JK61D, JK65A, JK65B, JK65C
	2WD ASCD 4WAS	JK62A, JK62B, JK62C, JK62D, JK66A, JK66B, JK66C
	2WD ICC 4WAS	JK63A, JK63B, JK63C, JK63D, JK67A, JK67B, JK67C
	4WD ASCD	JK68A, JK68B, JK68C, JK68D
	4WD ICC	JK69A, JK69B, JK69C, JK69D
2008 G35 Sedan only	2WD ASCD	1NA0A, 1NA0B, 1NA0C, 1NA4A, 1NA4B, 1NA4C
	2WD ICC	1NA1A, 1NA1B, 1NA1C, 1NA5A, 1NA5B, 1NA5C
	2WD ASCD 4WAS	1NA2A, 1NA2B, 1NA2C, 1NA6A, 1NA6B, 1NA6C
	2WD ICC 4WAS	1NA3A, 1NA3B, 1NA3C, 1NA7A, 1NA7B, 1NA7C
	4WD ASCD	1NA8A, 1NA8B, 1NA8C,
	4WD ICC	1NA9A, 1NA9B, 1NA9C
2008 EX	2WD ASCD VDC	1BA0A, 1BA0B, 1BA0C
	2WD ICC VDC	1BA1A, 1BA1B, 1BA1C
	4WD ASCD VDC	1BA2A, 1BA2B, 1BA2C
	4WD ICC VDC	1BA3A, 1BA3B, 1BA3C
2009 FX35	2WD ASCD VDC	1CA0A, 1CA0B, 1CA0C
	2WD ACC VDC	1CA1A, 1CA1B, 1CA1C
	4WD ASCD VDC	1CA4A, 1CA4B, 1CA4C
	4WD ACC VDC	1CA5A, 1CA5B, 1CA5C
2010 FX35	2WD ASCD VDC	1WW5A, 1WW5B
	2WD ICC	1WW6A, 1WW6B
	4WD ASCD	1WW7A, 1WW7B
	4WD ICC	1WW8A, 1WW8B

7. Follow the on-screen instructions to navigate C-III plus and reprogram the ECM.

**NOTE:**

- In some cases, more than one new P/N for reprogramming is available.
  - In this case, the screen in Figure 3 displays.
  - Select and use the reprogramming option that **does not** have the message "Caution! Use ONLY with ITBXX-XXX".
- If you get this screen and it is blank (no reprogramming listed), it means there is no reprogramming available for this vehicle. Close C-III plus and refer back to ASIST for further diagnosis.

**IMPORTANT:** If C-III plus locks up or freezes at this point or displays "cannot complete reprogramming, CONSULT PC is set up with User Rights. Reprogramming can be completed with Administrator log in", the TOUGHBOOK settings need to be changed so that Users have full access rights. See your Dealership's IT System Administrator for details.

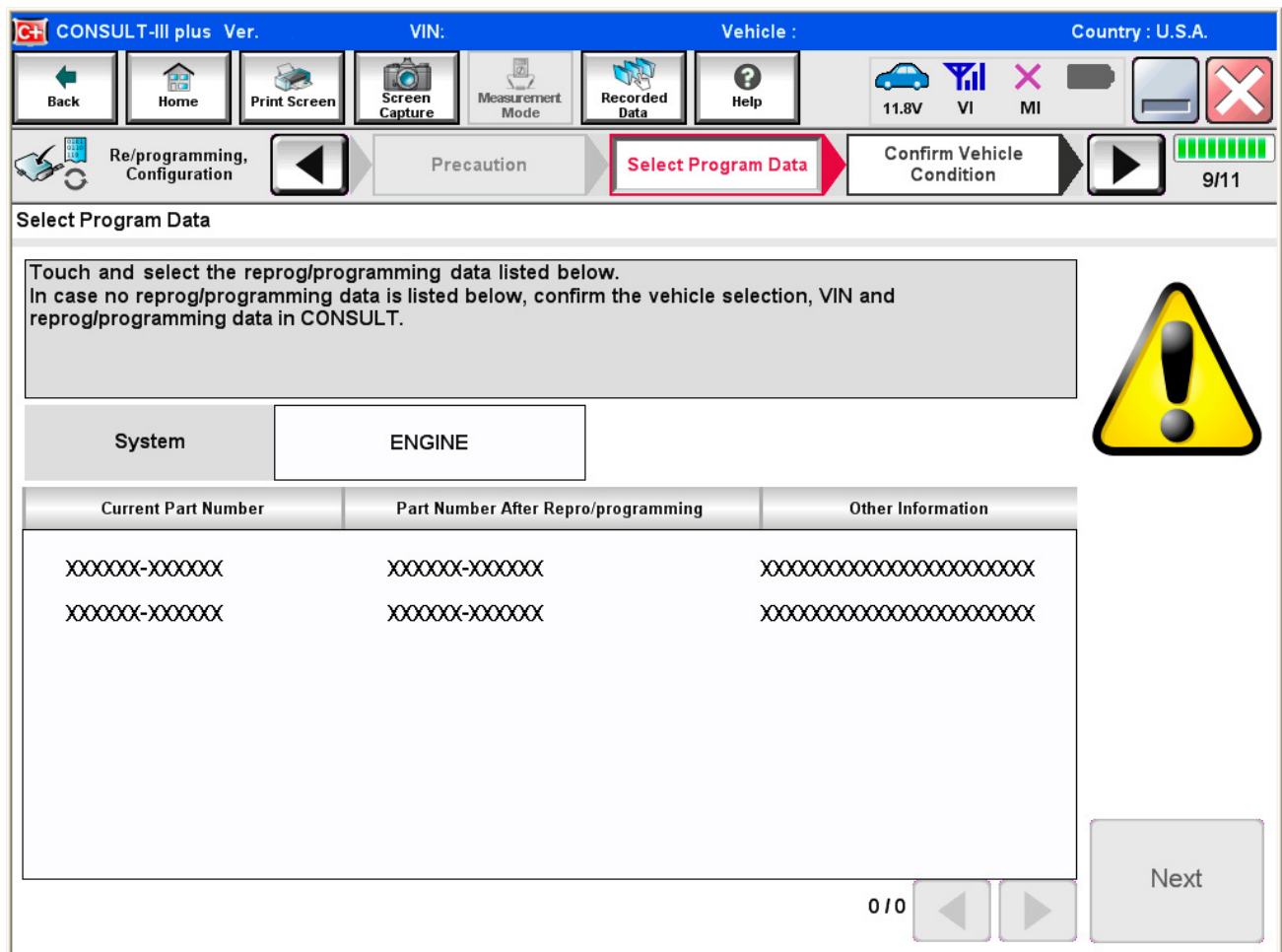


Figure 3

8. When the screen in Figure 4 displays, reprogramming is complete.

**NOTE:** If the screen in Figure 4 does not display (reprogramming does not complete), refer to the information on page 9.

9. Disconnect the battery charger from the vehicle.

10. Select **Next**.

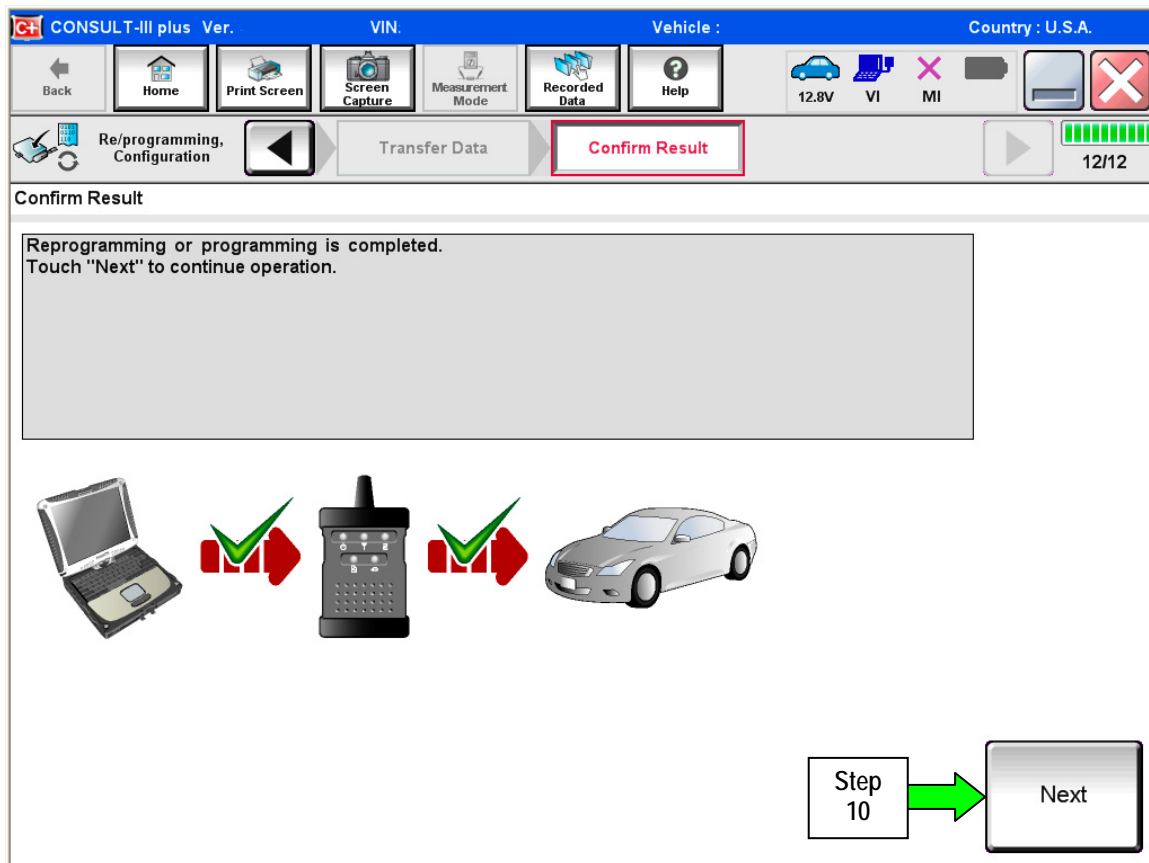


Figure 4

**NOTE:**

- In the next steps, starting on page 10, you will perform Throttle Valve Closed Position, Idle Air Volume Learn, Accelerator Closed Position, and DTC erase.
- These operations are required before C-III plus will provide the final reprogramming confirmation report.

## ECM recovery:

Do not disconnect plus VI or shut down Consult III plus if reprogramming does not complete.

If reprogramming does not complete and the “!” icon displays as shown in Figure 5:

- Check battery voltage (12.0–15.5 V).
- Ignition is ON, engine OFF.
- External Bluetooth® devices are OFF.
- All electrical loads are OFF.
- **Select retry and follow the on screen instructions.**
- “Retry” may not go through on first attempt and can be selected more than once.

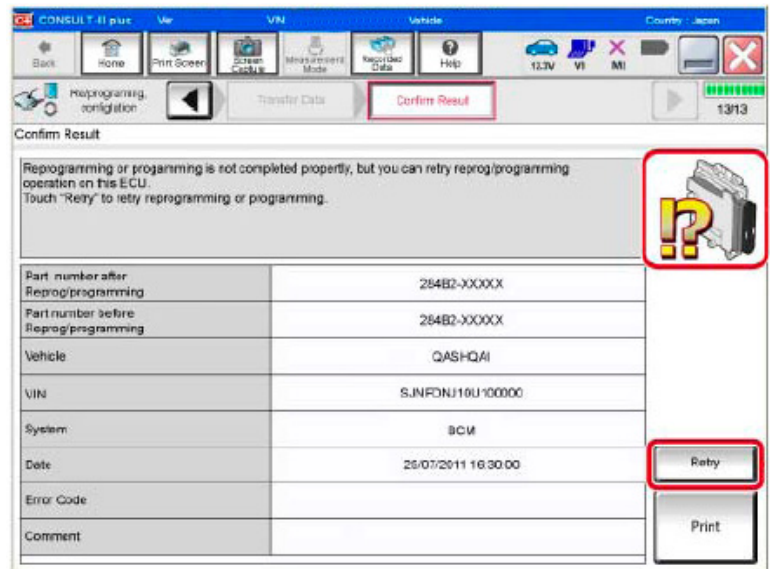


Figure 5

If reprogramming does not complete and the “X” icon displays as shown in Figure 6:

- Check battery voltage (12.0 – 15.5 V).
- CONSULT A/C adapter is plugged in.
- Ignition is ON, engine OFF.
- Transmission is in Park.
- All C-III plus / VI cables are securely connected.
- All C-III plus updates are installed.
- **Select Home, and restart the reprogram procedure from the beginning.**

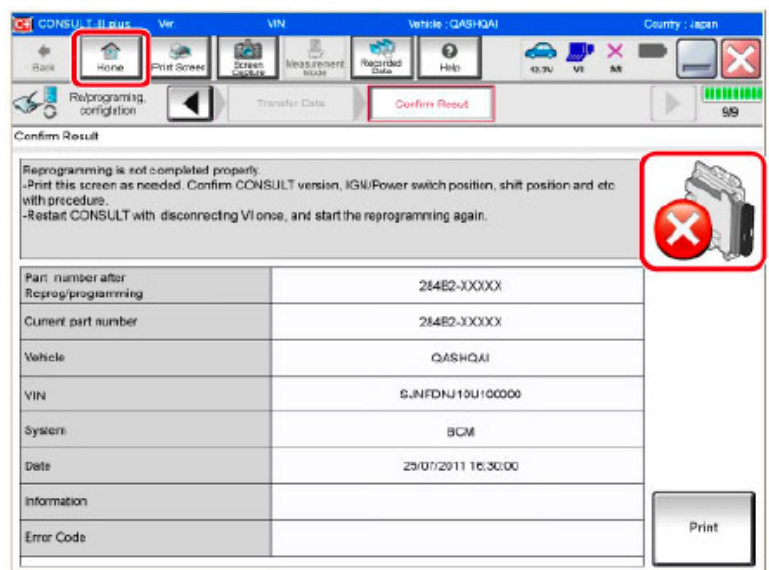


Figure 6

11. Follow the on-screen instructions to perform the following:

- **Throttle Valve Closed Position**
- **Idle Air Volume Learn (IAVL)**

**NOTE:**

- Listed below are common conditions required for IAVL to complete.
- If IAVL does not complete within a few minutes, a condition may be out of range.
- Refer to the appropriate Electronic Service Manual (ESM) for specific conditions required for the vehicle you are working on.
  - Engine coolant temperature: 70 -100° C (158 -212°F)
  - Battery voltage: More than 12.9V (At idle)
  - Selector lever: P or N
  - Electric load switch: OFF (Air conditioner, headlamp, rear window defogger)
  - Steering wheel: Neutral (Straight-ahead position)
  - Vehicle speed: Stopped
  - Transmission: Warmed up
- **Accelerator Pedal Close Position Learning**
- **Erase DTCs**

Continue to the next page.

12. When the entire reprogramming process is complete, the screen in Figure 7 will display.
13. Verify the before and after part numbers are different.
14. Print a copy of this screen (Figure 7) and attach it to the repair order for warranty documentation.
15. Select **Confirm**.



Figure 7

16. Close C-III plus.
17. Turn the ignition OFF.
18. Disconnect the plus VI from the vehicle.
19. Test drive the vehicle and make sure it operates correctly and the MIL is OFF.
  - If the MIL comes ON, go back to ASIST for further diagnostic information.
  - Diagnosis and repairs beyond ECM reprogramming are not covered by this bulletin.