

## SERVICE CAMPAIGN BULLETIN

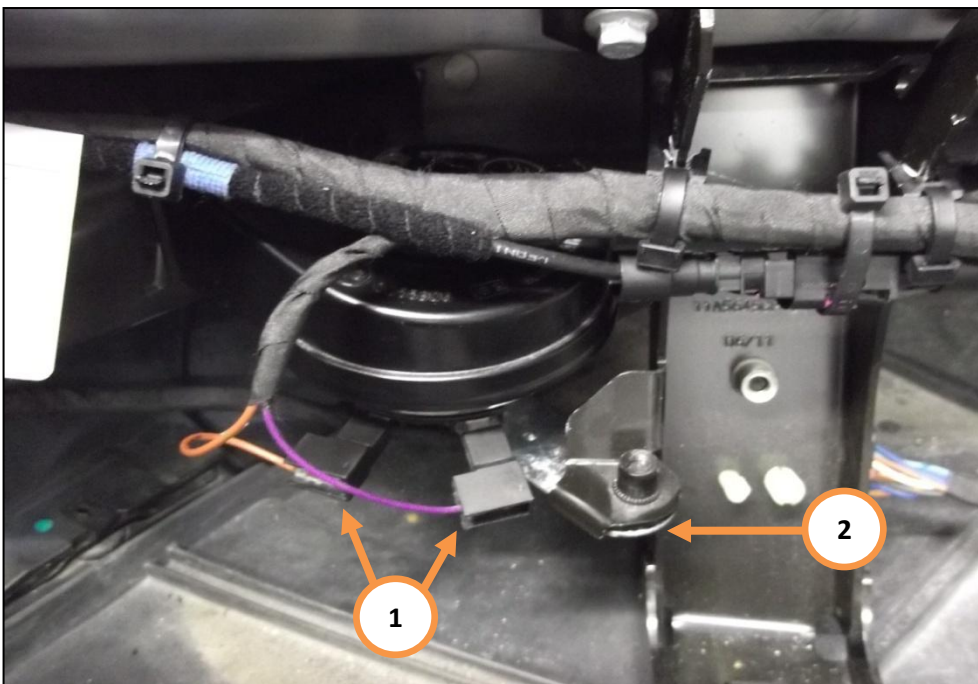
**CAMPAIGN REF:** 026  
**TITLE :** Horn re-orientation US Only  
**DOCUMENT # :** 11 M 062  
**AFFECTED VEHICLES :** 12C Coupe and Spider

**SITUATION :** Quality Engineering at McLaren Automotive have introduced a procedure for the re-orientation of the vehicle horns to allow water to drain from the units. Whilst water ingress may affect the sound under normal operation the degradation in the quality of the sound spread across the two horns fitted is limited and there is no immediate failure of both horns.

**PROCEDURE :** In the event of a customer complaint or when a vehicle is in the workshop for any other reason, replace both horns and install the new brackets. Please follow the instructions outlined in this document to install the brackets and replace the horns.

### REMOVAL:

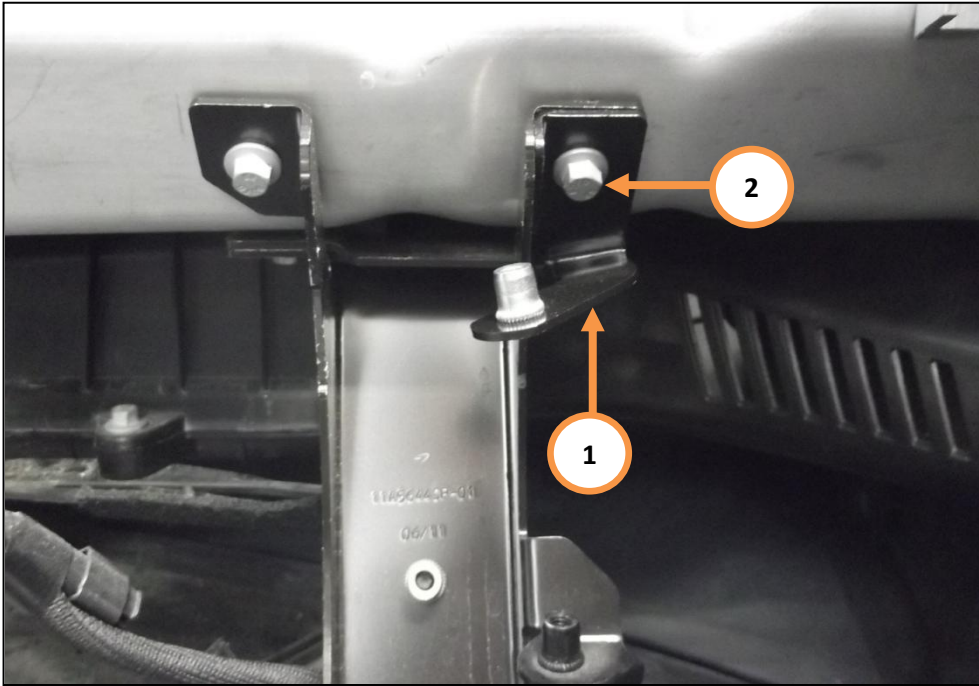
1. Remove the front luggage bin. Please refer to AA-RM-02A02-03-003 - Remove/install luggage bin – Front.
2. Disconnect the electrical connections of the horn (1).
3. Remove nut (2) 8Nm.
4. Repeat step 2 and 3 for the other side.



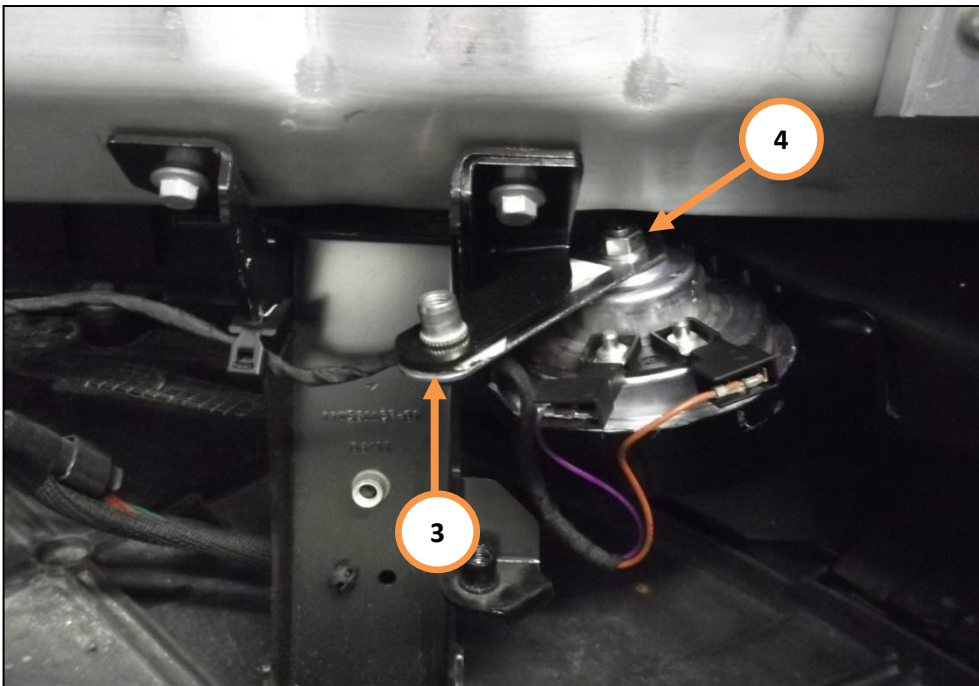
**INSTALLATION:**

**Left hand side**

1. Install the new horn bracket (11M2873CP) (1), using the existing bolt (2). Torque up to 6Nm.

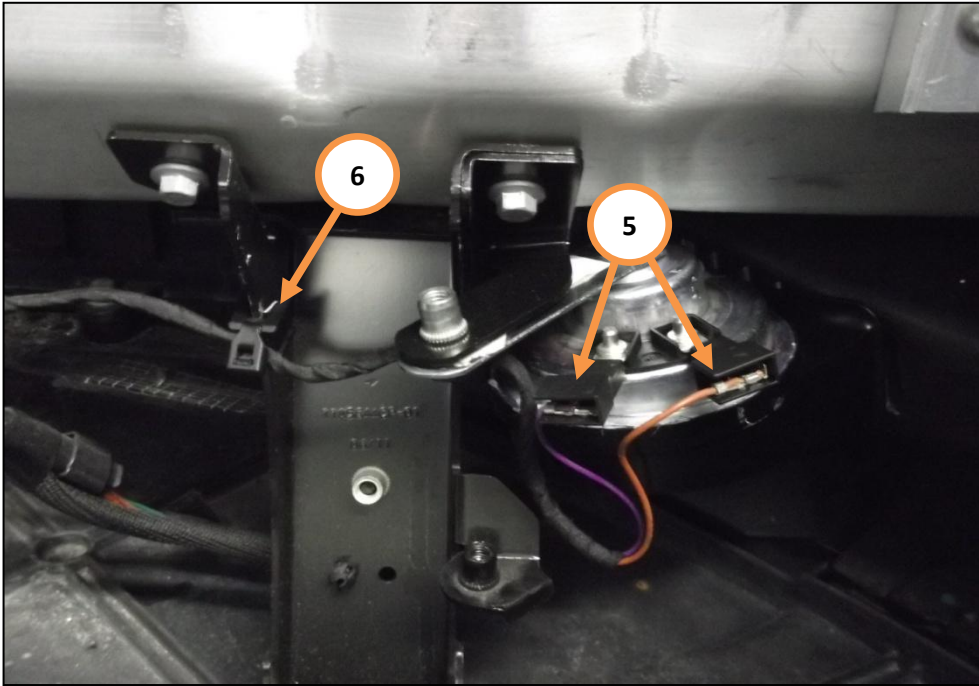


2. Install the Low Tone horn (11M0428CP) to the new bracket (3) and torque to 8Nm. To achieve the correct installation, the horn must be rotated so the fixing point is facing upwards (4).



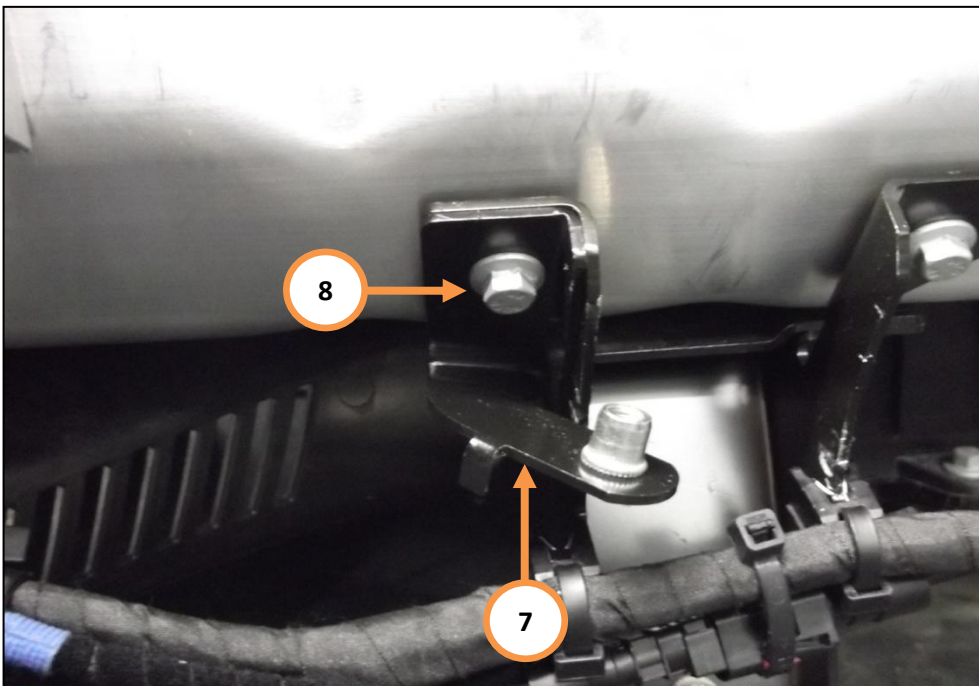
**Care Point:** Ensure that the purple wire is connected to the rear connection and the brown wire is connected to the front.

3. Connect both electrical connections to the horn (5).
4. Clip the harness back to its original position (6).

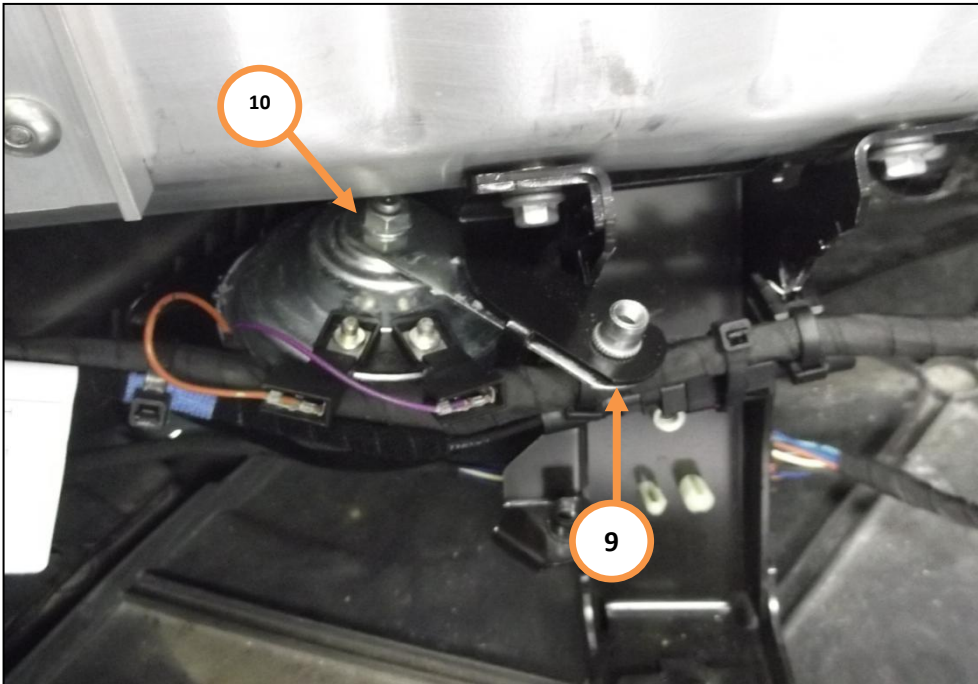


**Right hand side**

5. Install the new horn bracket (11M2872CP) (7), using the existing bolt (8). Torque to 6Nm.

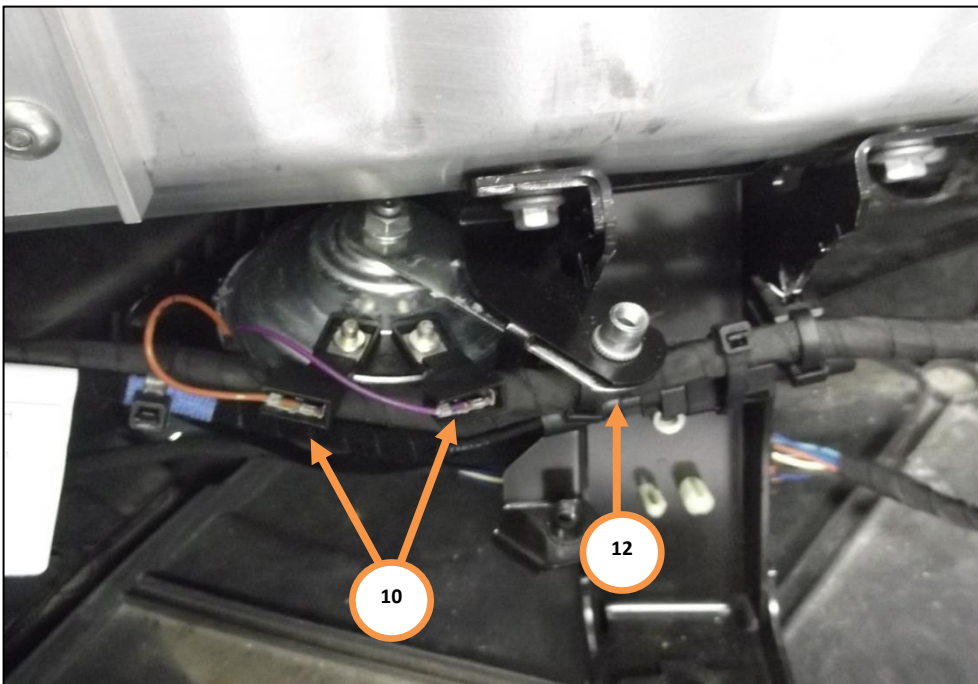


6. Install the High Tone horn (11M0427CP) to the new bracket (9) and torque to 8Nm. To achieve the correct installation, the horn must be rotated so the fixing point is facing upwards (10).



**Care Point:** Ensure that the purple wire is connected to the rear connection and the brown wire is connected to the front.

7. Connect both electrical connections to the horn (11).
8. Move the harness below the horn bracket (12) and secure it using the existing clips.



9. Install components in reverse order.

Please contact your Regional Aftersales Manager should you have any questions relating to the information contained in this bulletin.

---

## WARRANTY INFORMATION

DESCRIPTION	RESOLUTION CODE	TOTAL REPAIR TIME
Horn replacement and bracket fitment	M0M20110A33A9901	0.5

## PARTS INFORMATION

PART DESCRIPTION	PART NUMBER	QUANTITY	ORDER PROCESS
Horn bracket RH	11M2872CP	1	Unipart
Horn bracket LH	11M2873CP	1	Unipart
Horn Low	11M0428CP	1	Unipart
Horn High	11M0427CP	1	Unipart

---