

SERVICE CAMPAIGN BULLETIN

CAMPAIGN REF: 01W
TITLE: Vehicle software platform update from 10.1 to 10.2
DOCUMENT #: 11 M 049
AFFECTED VEHICLES: 12C Coupe

SITUATION: Quality Engineering at McLaren Automotive have released a new software platform for the Model Year 13 12C.

The most noticeable customer benefits of this software are:

- Overall improved software updates throughout the vehicle.
- Satellite navigation functionality.

PROCEDURE: It is necessary to update the software on all affected vehicles within your Aftersales car parc, both when carrying out Pre-Delivery Inspections (PDI) and at the next service centre visit

MODULE	NEW SOFTWARE PART NUMBERS
Instrument Cluster (IC)	11M1180CP.25
Security Body Controller (SBC)	11M1075CP.18
Door Module Left (DML)	11M1071CP.11
Door Module Right (DMR)	11M1070CP.11
Satellite Navigation	11M2440CP.05 North America 11M2446CP.06 Australia/New Zealand 11M2451CP.05 Singapore/Malaysia 11M2853CP.03 Middle East (English language) 11M2854CP.04 Middle East (Arabic language) 11M2453CP.02 South Africa 11M2438CP.05 West/East Europe 11M2436CP.05 West Europe

1. Please refer to AA-RM-02A02-03-004 - Remove/Install luggage bin – rear.

Care point: In order to avoid personal injury and damage to the vehicle, do not connect the positive terminal (+) to the negative terminal (-). Ensure that the connections are secure. Do not place any metal objects near the battery when charging and do not place the Deutronic battery charger directly onto the battery unit.

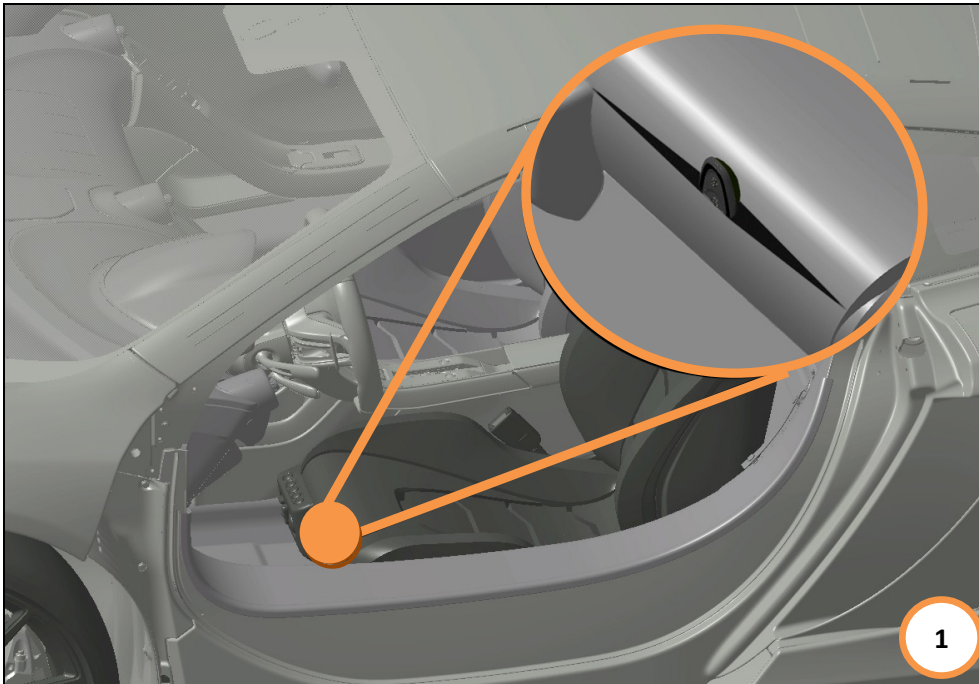
2. Keep the battery on charge, using a Deutronic battery charger during the software downloading procedure.

Care point: Both the driver and passenger windows must be in the fully open position during software downloads.

Care point: All software downloads require the vehicle to be in ignition state 5.

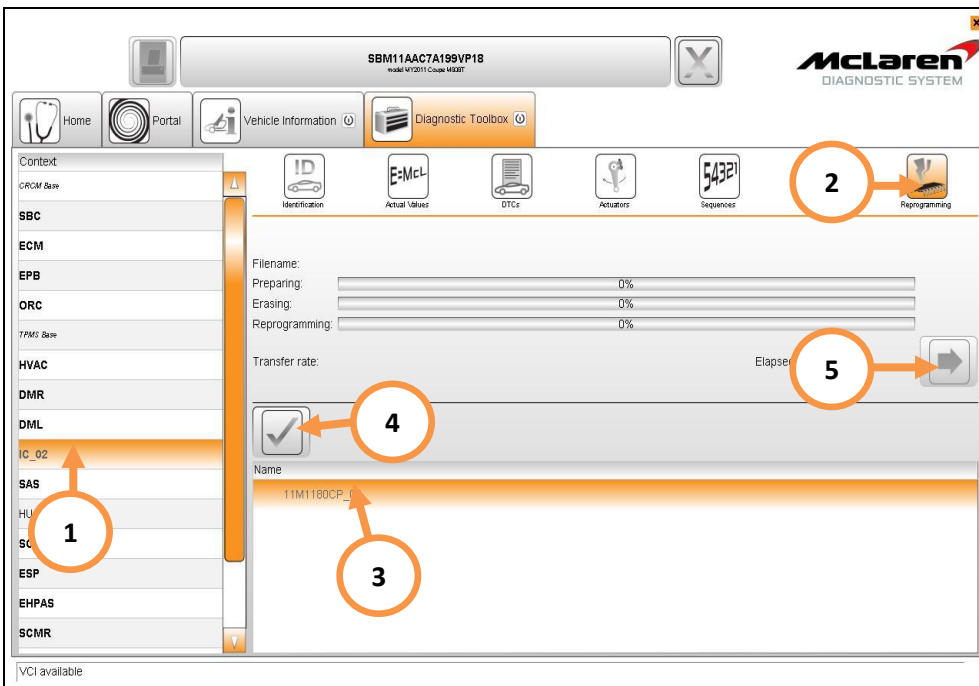
Care point: During the software download process, it is normal for the instrument cluster displays to extinguish temporarily.

Care point: The key must be positioned in the driver's seat front pocket, picture below (1).

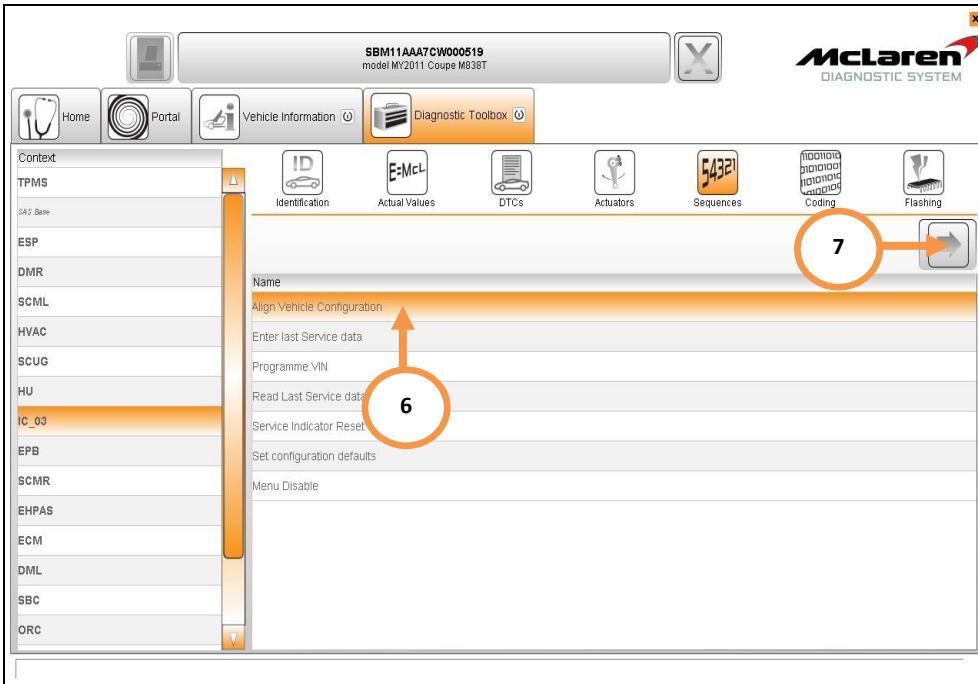


IC SOFTWARE UPDATE:

1. Select IC_02 (1), then Reprogramming (2), select the software level 11M1180CP.25 (3) then proceed to the software download by selecting the tick button (4), followed by the arrow button (5). Select 'YES' to initiate programming.

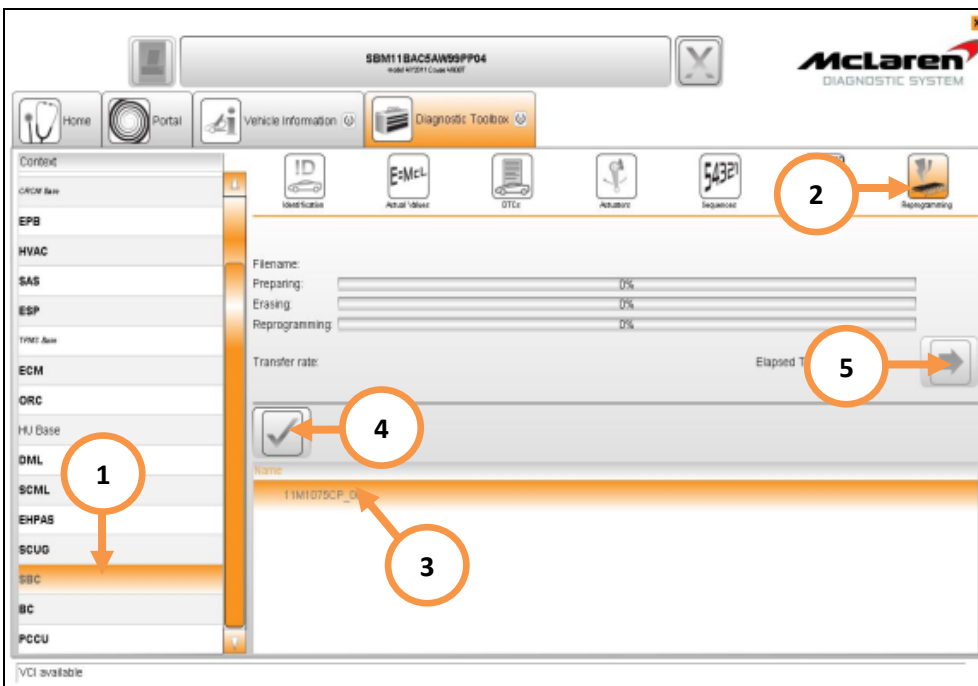


2. Select Align Vehicle Configuration (6), followed by the arrow key (7).



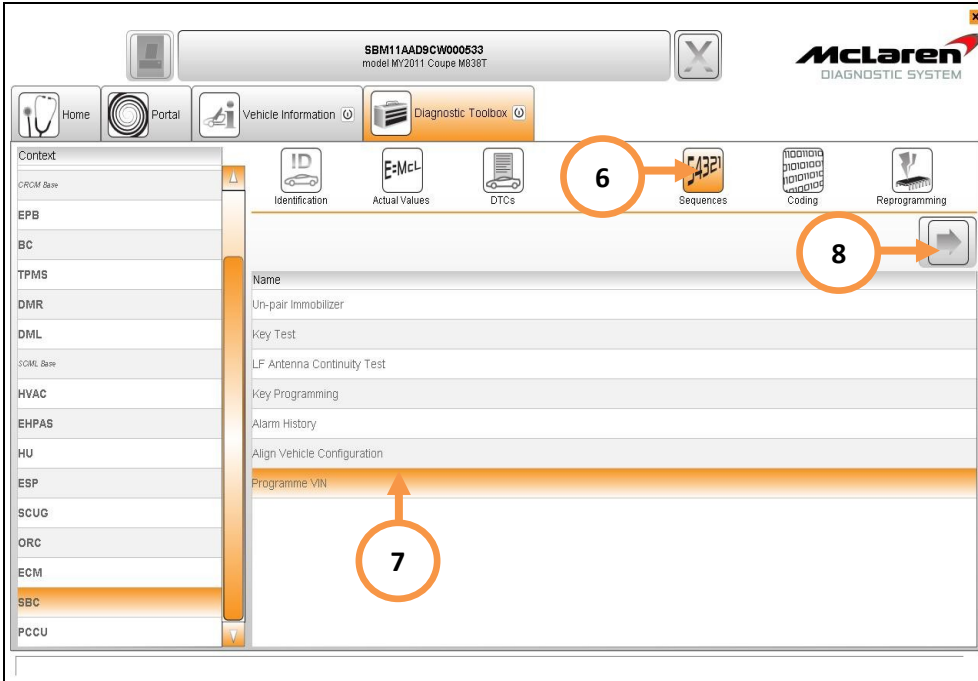
SBC SOFTWARE UPDATE:

3. Select SBC (1), then Reprogramming (2), select the software level 11M1075CP.18 (3) then proceed to the software download by selecting the tick button (4), followed by the arrow button (5). Select 'YES' to initiate programming.

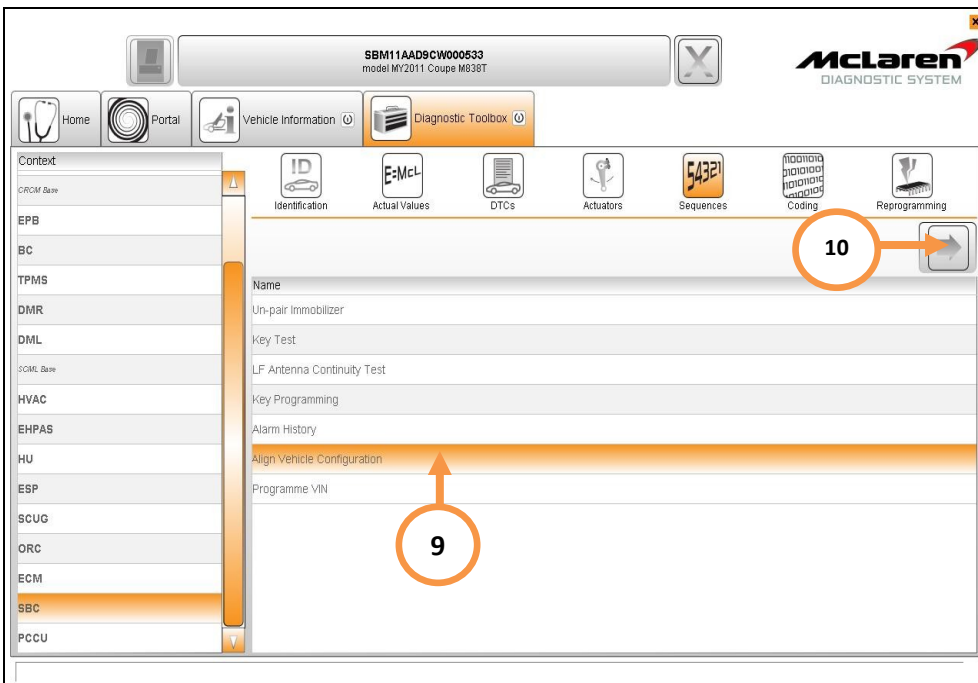


4. When the software download has been successfully completed, programming will force a sleep cycle to occur.
5. After one minute, press the unlock button on the key and then establish the vehicle into ignition state 5 before following the next steps.

6. Select Sequences (6), then Programme VIN (7) then select the arrow button to proceed (8). The programme VIN procedure will force a sleep cycle to occur after the programming is complete.
7. Press the unlock button on the key and then establish the vehicle into ignition state 5 before following the next steps.



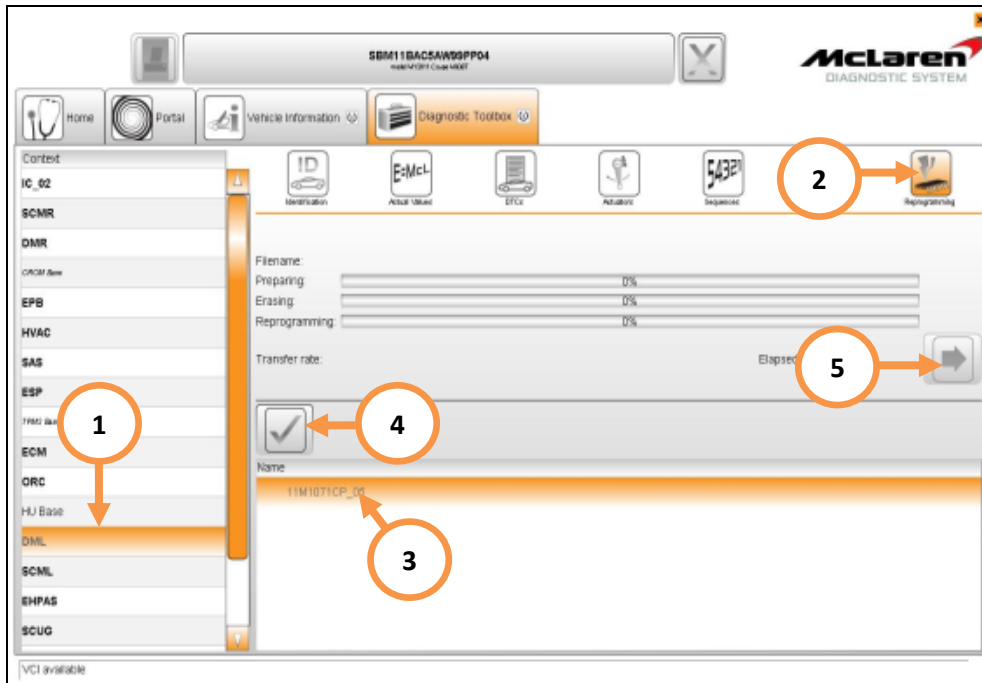
8. Select Align Vehicle Configuration (9), followed by the arrow key (10).



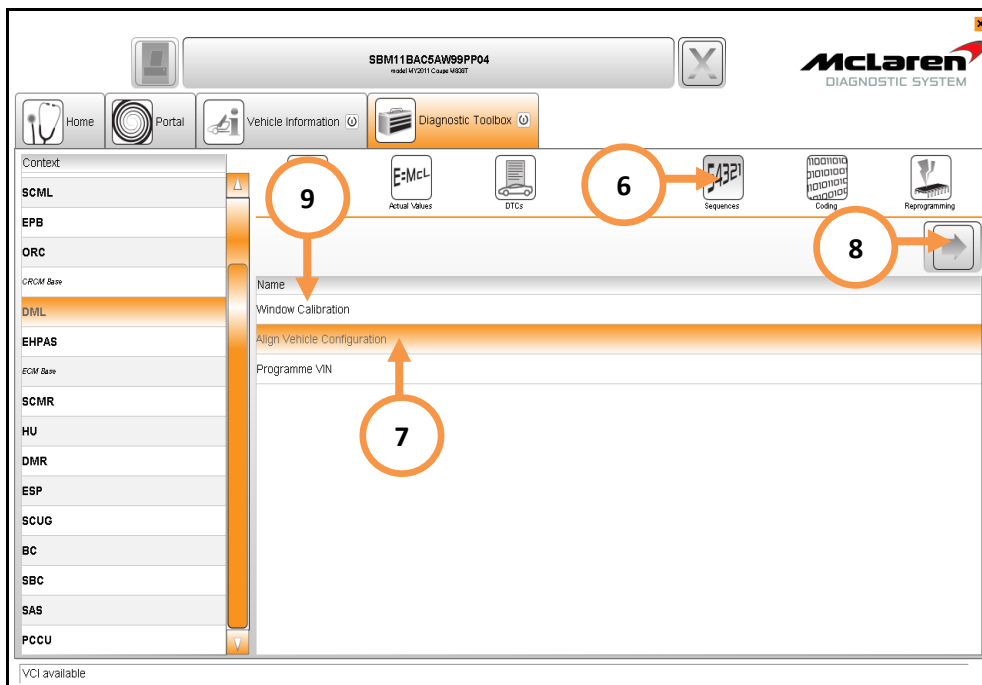
9. Press the unlock button on the key and then establish the vehicle into ignition state 5 before following the next steps.

DML SOFTWARE UPDATE:

10. Select DML (1) then Reprogramming (2) select the software level 11M1071CP.11 (3) then proceed to the software download by selecting the tick button (4), followed by the arrow button (5). Select 'YES' to initiate programming.



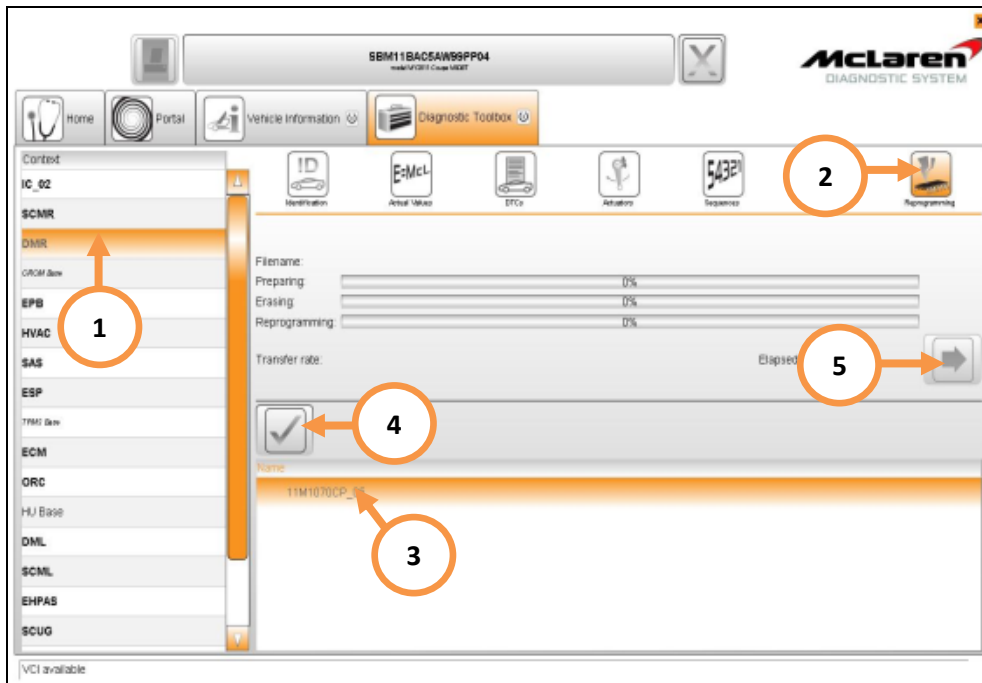
11. Select Sequences (6), select Align Vehicle Configuration (7), followed by the arrow key (8).



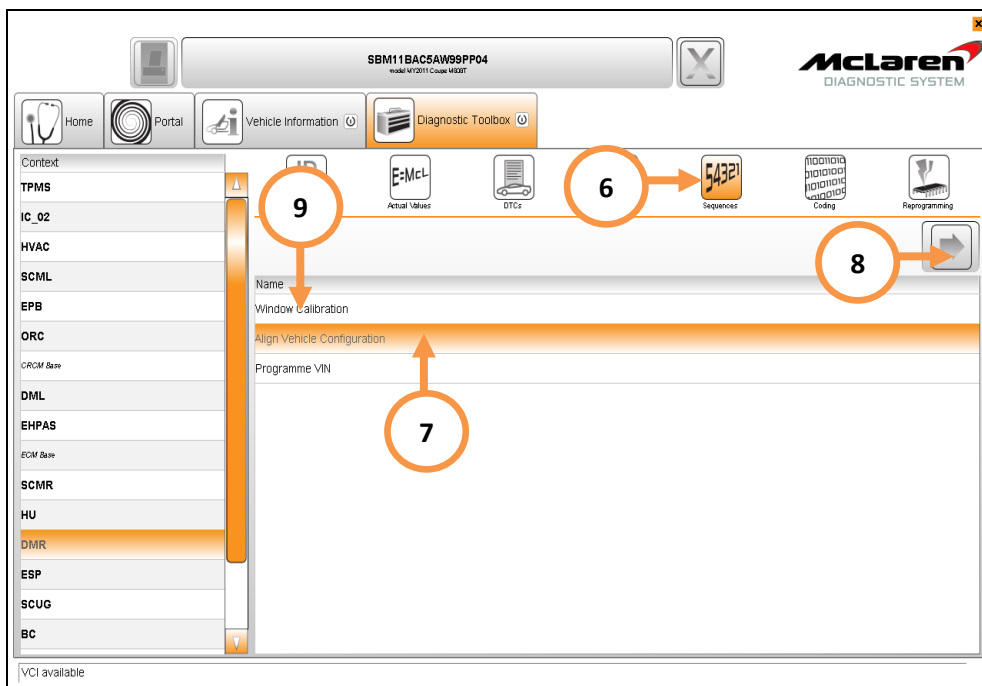
12. Select Window Calibration (9), followed by the arrow key (8).

DMR SOFTWARE UPDATE:

13. Select DMR (1) then Reprogramming (2), select the software level 11M1070CP.11 (3) then proceed to the software download by selecting the tick button (4), followed by the arrow button (5). Select 'YES' to initiate programming.



14. Select Sequences (6), select Align Vehicle Configuration (7), followed by the arrow key (8).



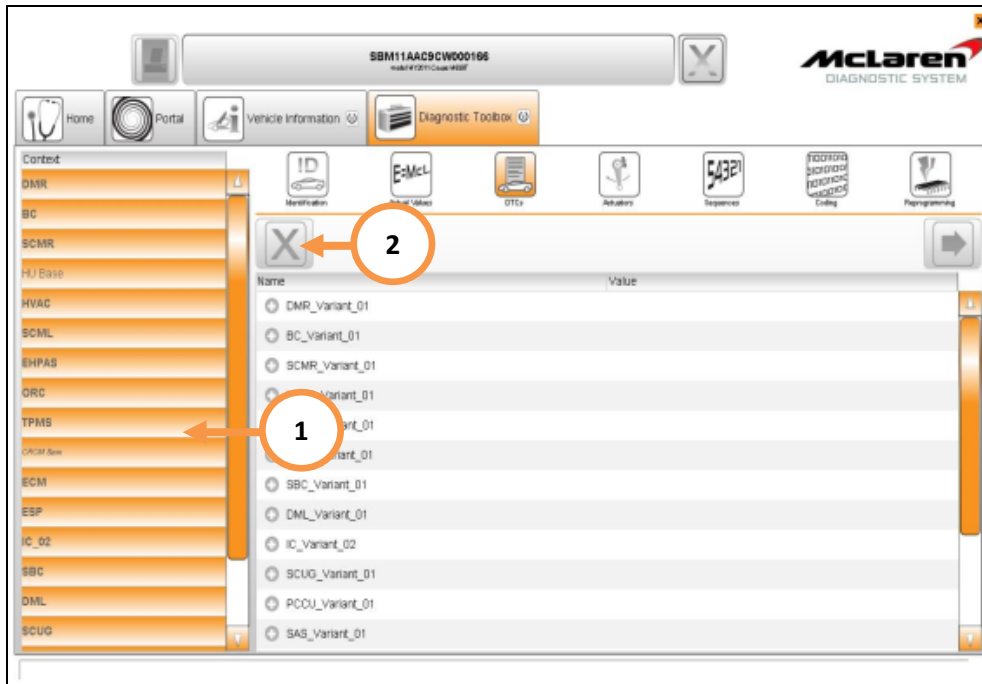
15. Select Window Calibration (9), followed by the arrow key (8).

Care point: ECM DTCs must only be cleared in ignition state 5.

16. Cycle the ignition (on off on) and wait for 30 seconds. Place the vehicle into a sleep mode, and then establish the vehicle back into ignition state 5.

Care Point: HVAC DTC's U015500 CAN Missing IC and B1A3700 Kept Awake may not delete these can be ignored.

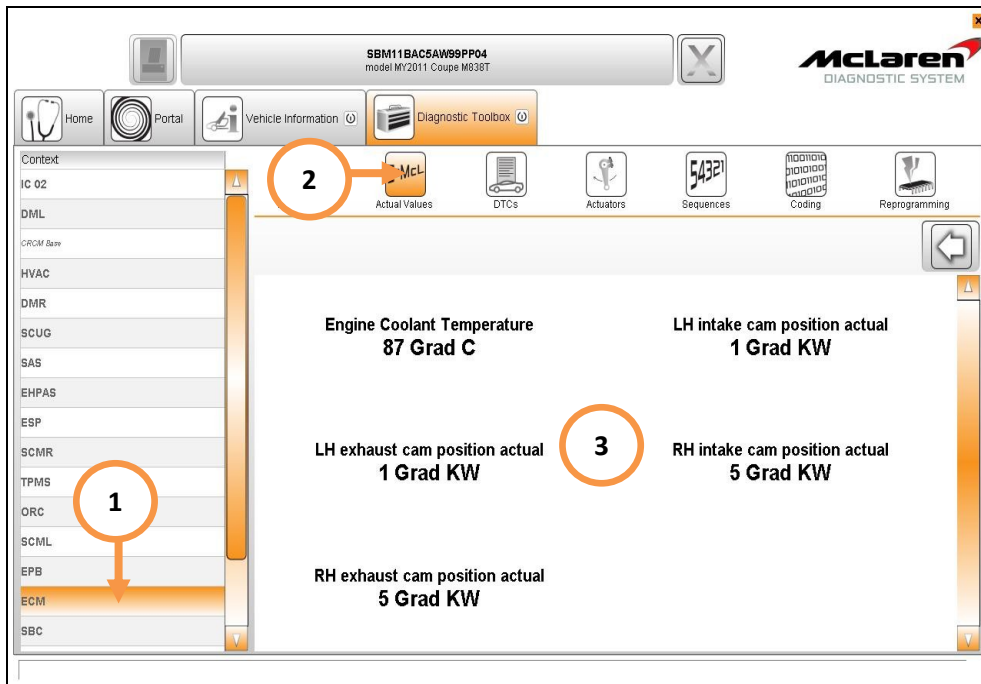
17. Select and highlight all items within the context fields (1) and perform a global clear of all DTC's (2).



18. Press the stop/start button with the brake pedal depressed, start the engine and allow it to idle until fully warm.

Care point: The Air conditioning must be switched on and the engine coolant temperature must be above 80 degrees C before proceeding with the camshaft adaption procedure.

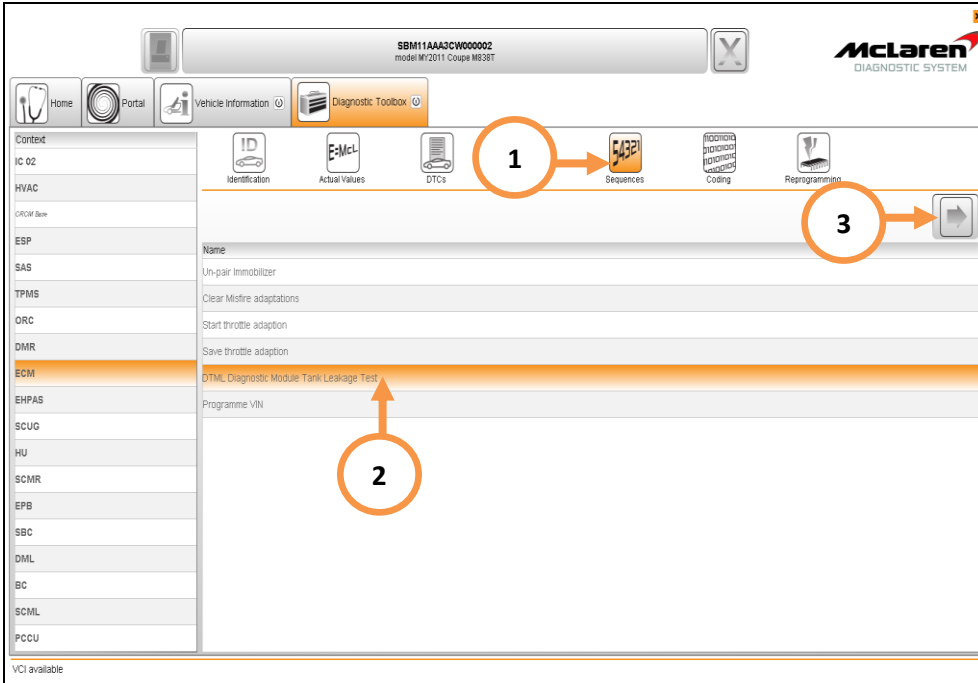
19. Select ECM (1) then Actual Values (2), select the following values as per the screenshot below (3) then select the play button to access the required data screen.
20. The inlet and exhaust camshaft values should be between 1 and 4, both values will fluctuate slightly. If all values are correct no further action is required proceed to step 22. If any values are incorrect proceed to step 21 to carry out the camshaft adaption.



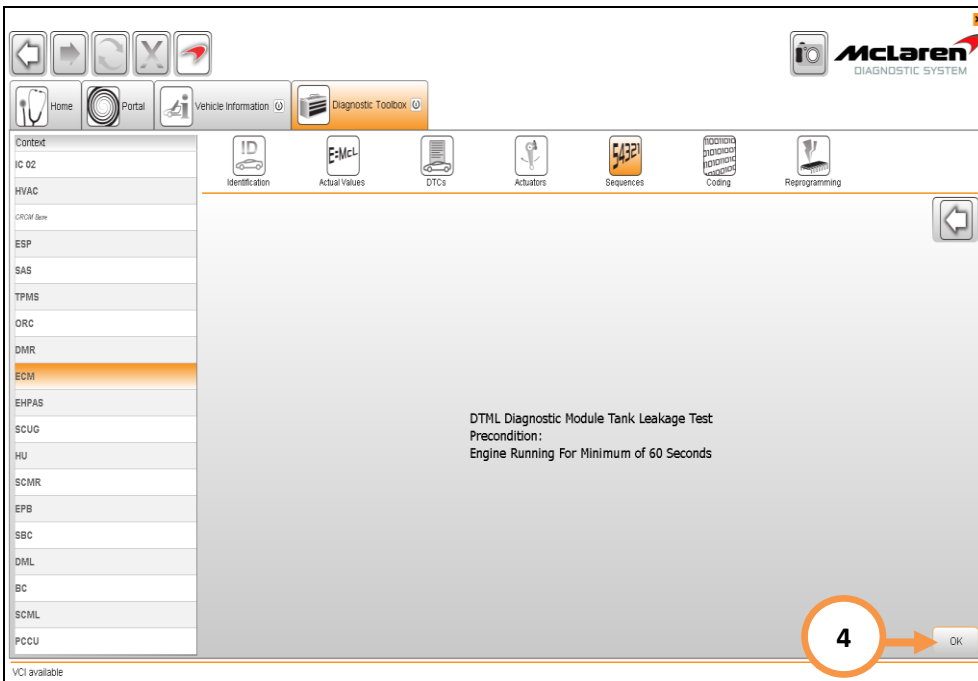
21. Switch the engine off, wait 30 seconds, restart the engine and recheck the values. Repeat this procedure until the target values are achieved.

Care point: The fuel level must be above ¼ before you proceed to Diagnostic Module Leakage Test (DMTL).

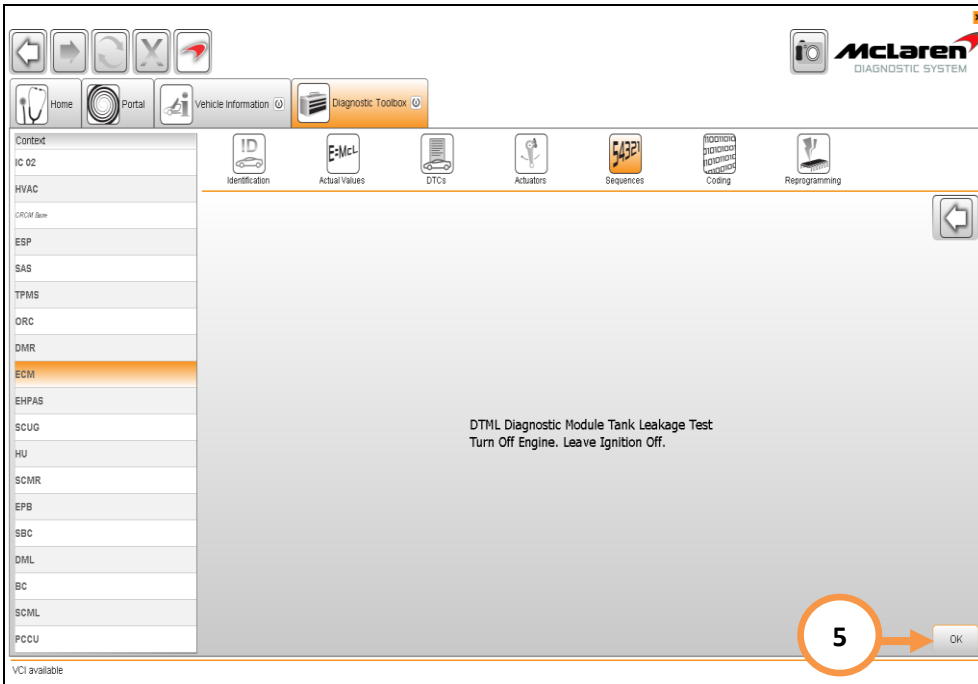
22. Select Sequences (1), then DMTL-Diagnostic Module Leakage Test (2), followed by the arrow button to proceed (3).



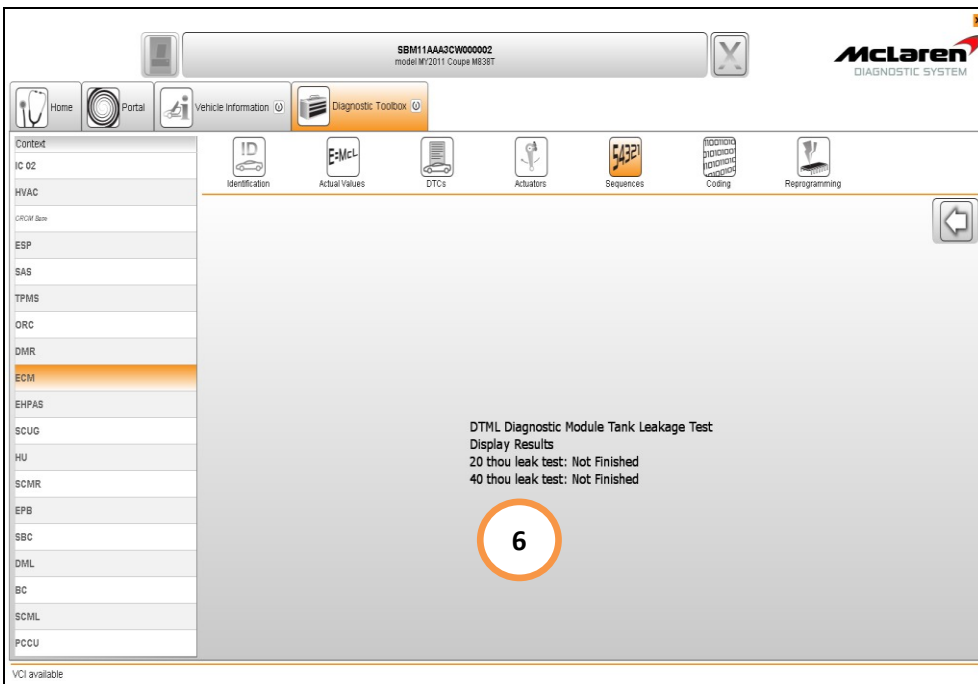
23. Follow the preconditions and run the engine for 60 seconds and then select Ok (4).



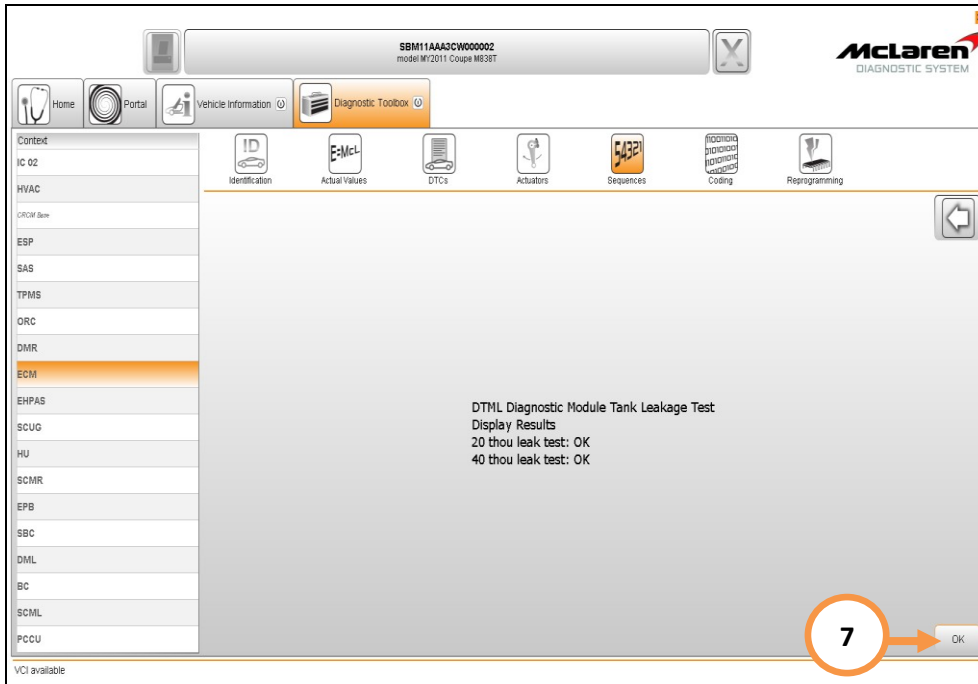
24. Follow the instructions on the next screen and then select Ok (5).



25. The DMTL test will now run and can take upto six minutes to complete the 20 thou and 40 thou leak test (6).



26. When the 20 thou and 40 thou leak tests have completed the screen below will be displayed, then select Ok (7).



IRIS UPDATE:

Care point: IRIS software downloads requires the vehicle to be in ignition state 5.

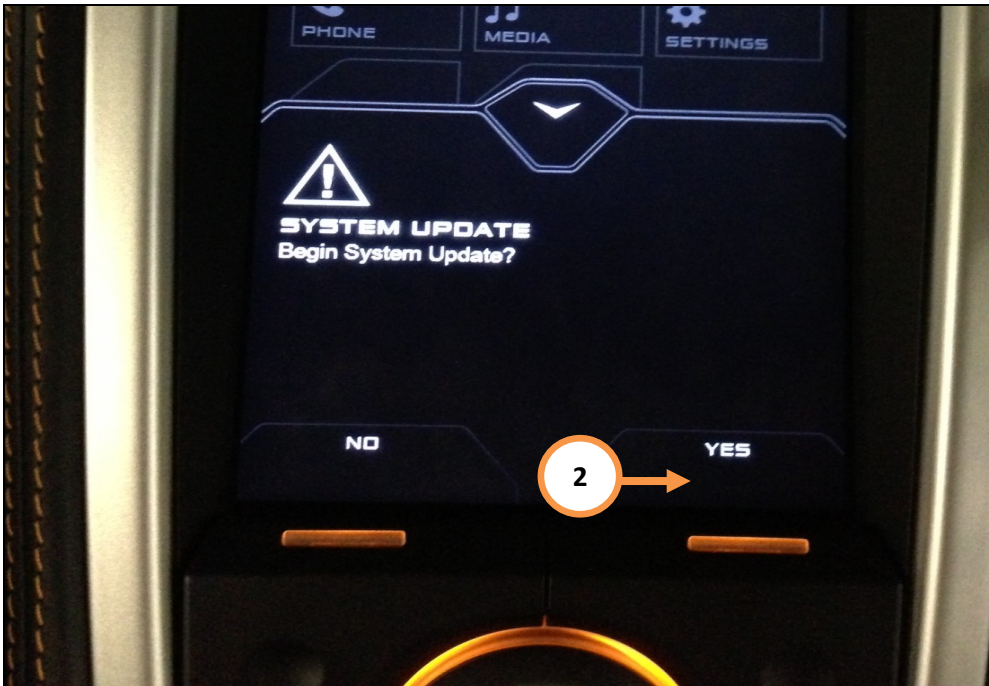
27. Ensure the IRIS is powered up to the home screen and Radio is off.

Care point: The USB drive must be engaged with the gold contact points facing downwards.

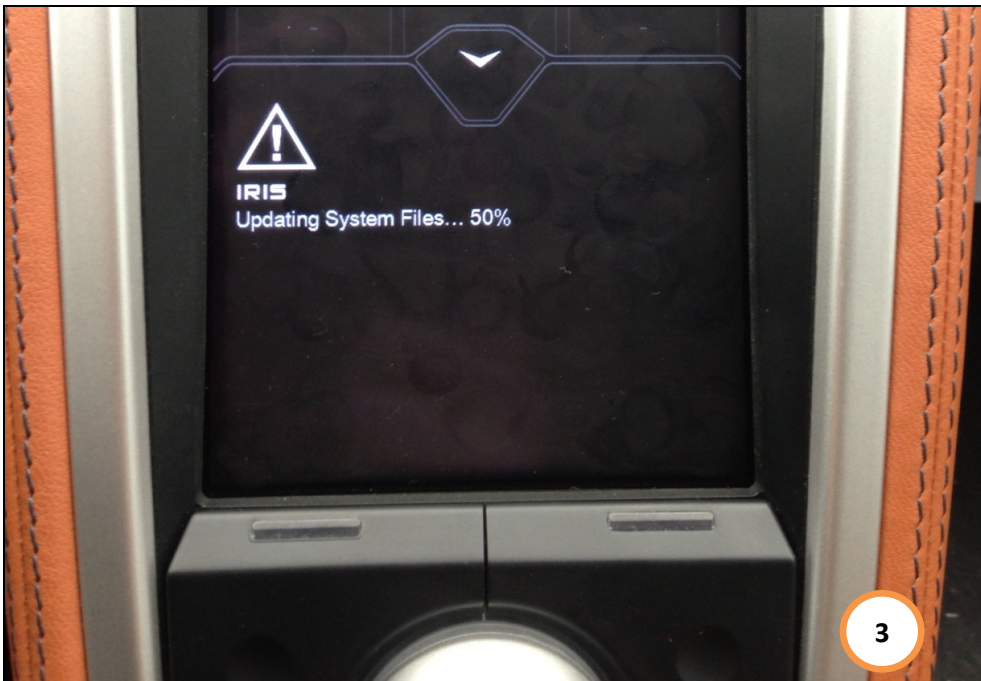
28. Insert the USB drive 11M2518CP.08 into the USB socket (1), then press and hold the centre IRIS button for approximately five seconds until the McLaren logo screen appears. This will trigger the software download process.



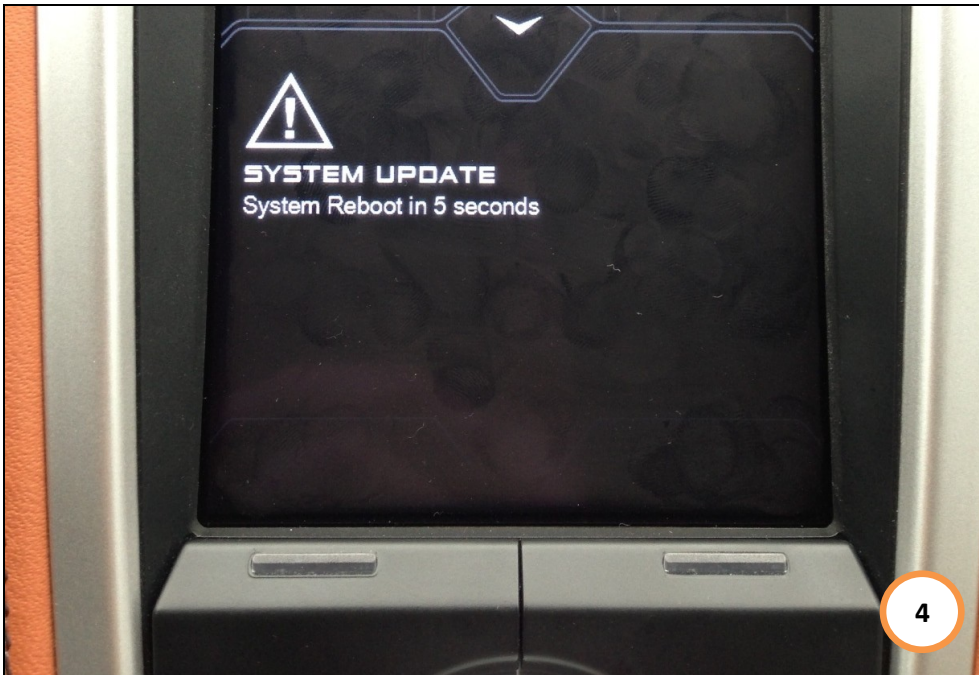
29. The following screen will be displayed, select Yes (2).



30. The following software download screen will be displayed whilst the update is proceeding (3).

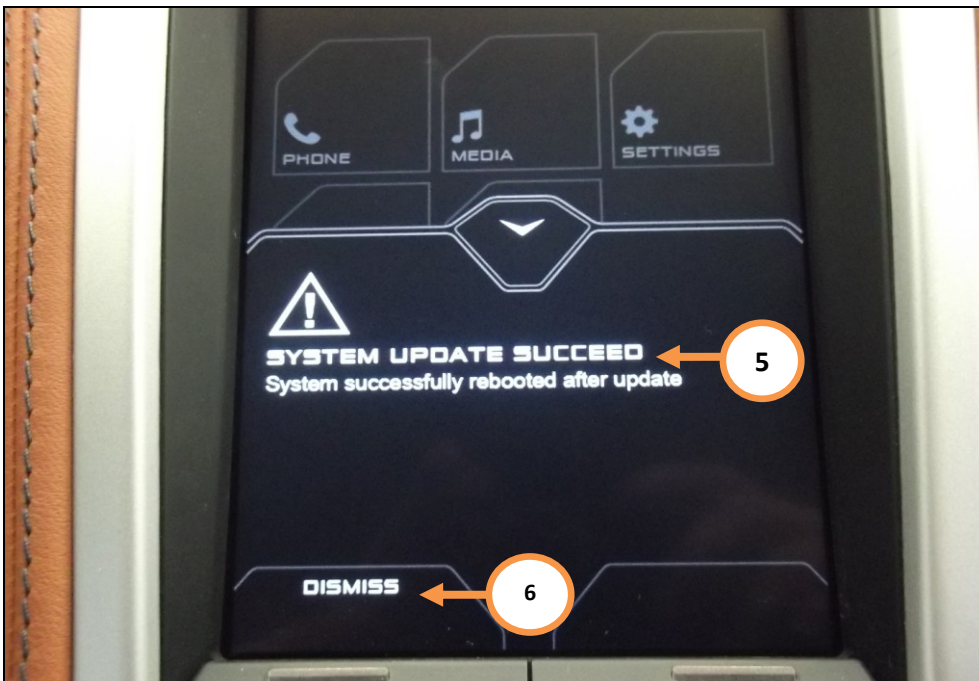


31. Once the update has completed the following screen will be displayed (4), remove the USB drive.



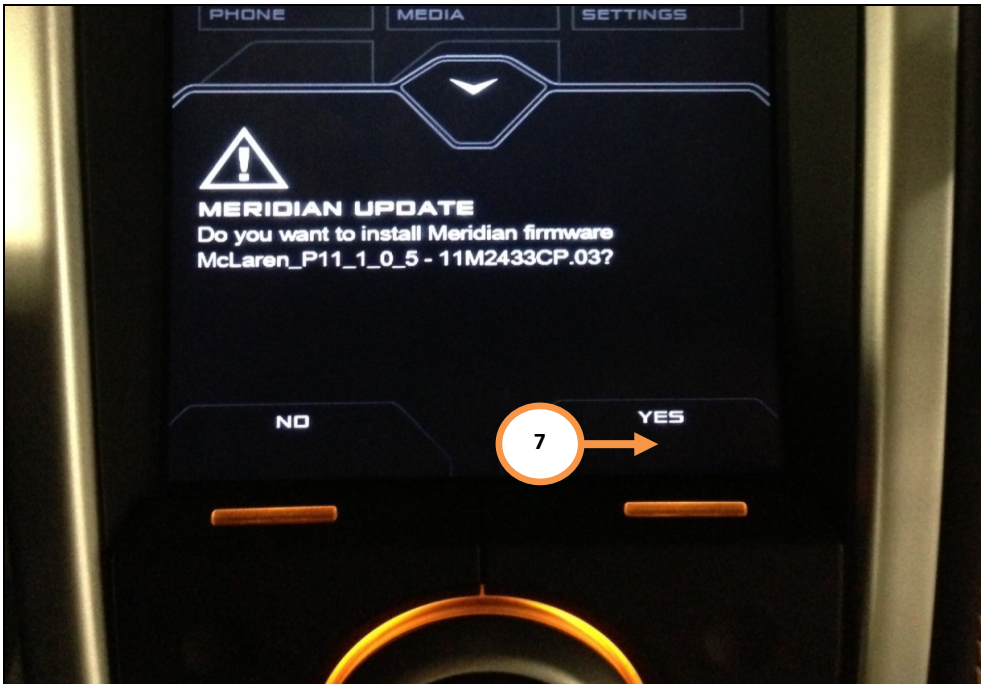
Care Point: System reboot can take up to three minutes and during this period the screen may appear blank or contain lines.

32. Once the reboot has completed the following screen will appear (5), select Dismiss (6).



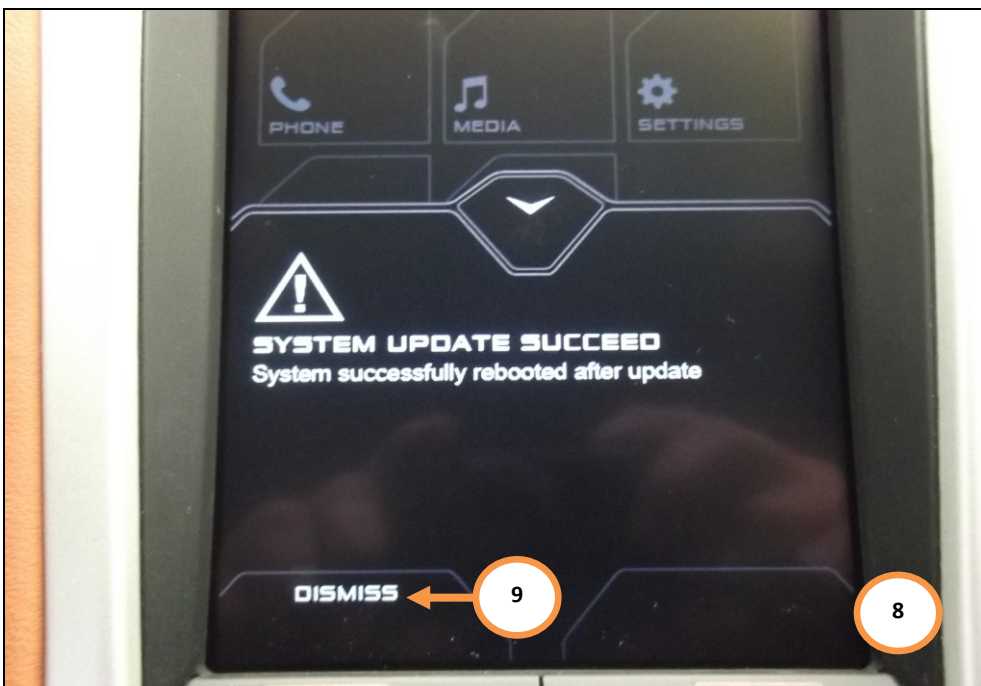
33. Press and hold the centre IRIS button for approximately five seconds until the McLaren logo screen appears to reset the unit and the normal functionality will return.

34. Insert USB drive 11M2433CP.03 into the USB socket and the following screen will then appear, select Yes (7).



Care Point: The system reboot can take up to three minutes and during this period the screen may appear blank or contain lines.

35. Once the update has completed and the unit has rebooted, the following screen will be displayed (8), select Dismiss (9) and remove the USB drive.



36. Switch the Ignition off and wait until the Start/Stop button illumination has extinguished, wait a further one minute and then establish the vehicle into ignition state 5 before following the next steps.

37. EMMC Formatting and Navigation software installation is only required on vehicles built with Meridian Surround Sound, if this is not required carry out steps 39 to 40 and then proceed to step 50.

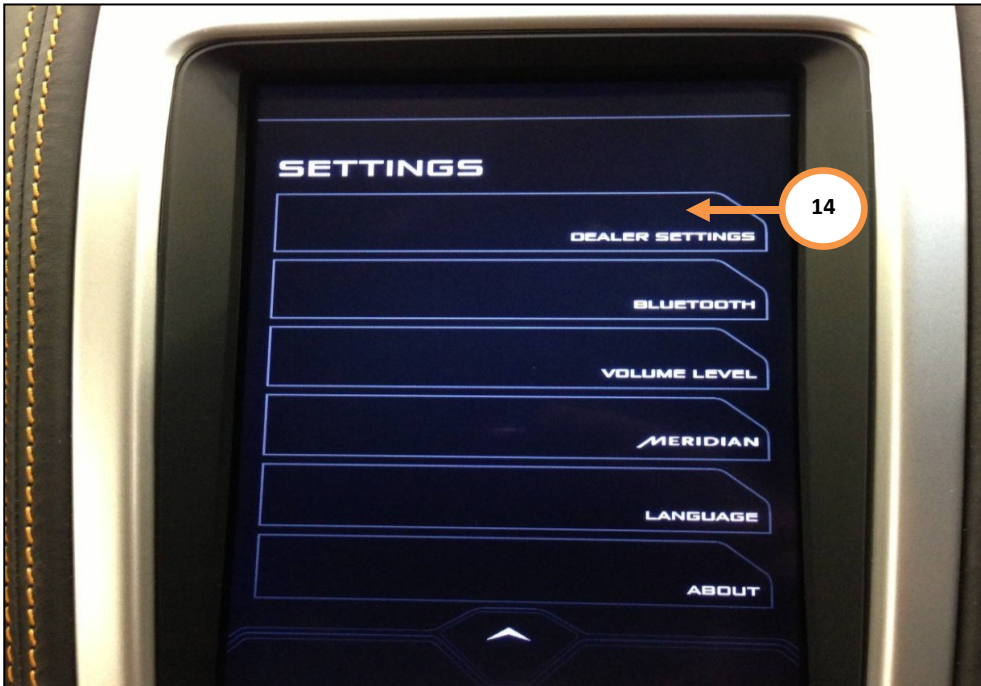
38. Select the "SETTINGS" icon on the home screen to enter the settings menu (13).



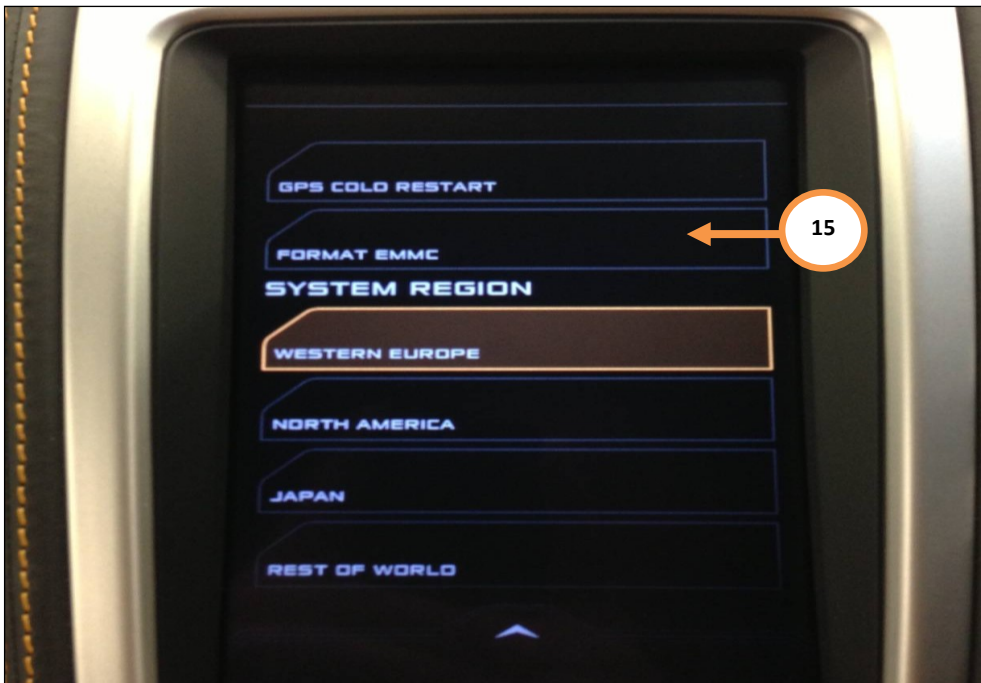
39. Hold down the IRIS mute button and perform the following actions by turning the volume control ring:

- Right two notches on volume control
- Left one notch on volume control
- Right three notches on volume control
- Left two notches on volume control

40. An additional option "DEALER SETTINGS" will appear (14) select this option to enter the dealer settings menu.



41. Select "FORMAT EMMC" (15).



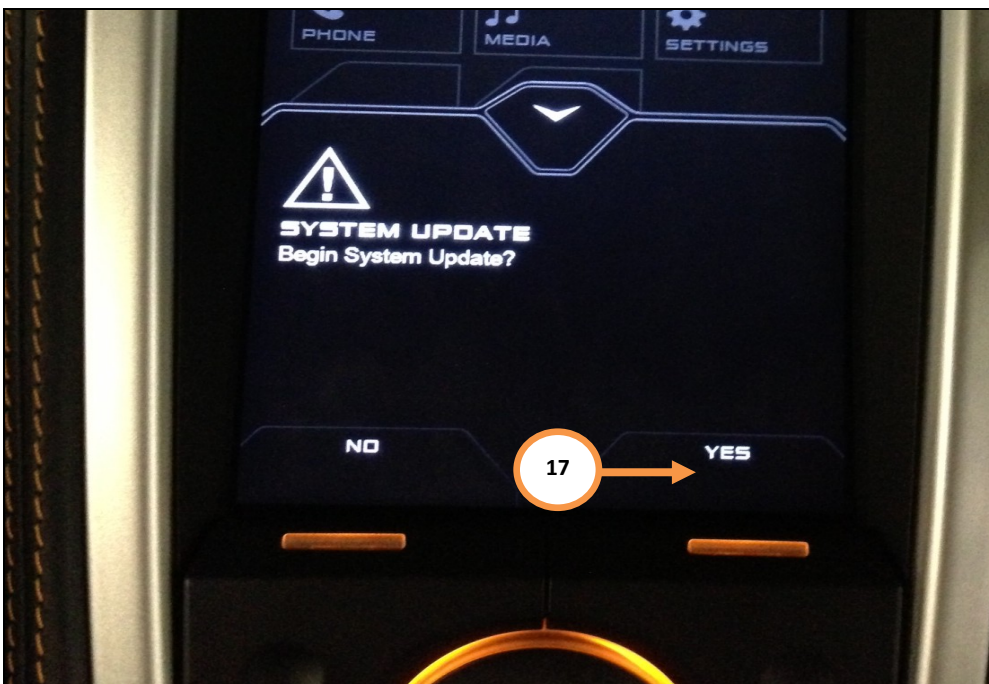
42. EMMC Formatting in progress will be displayed (16).



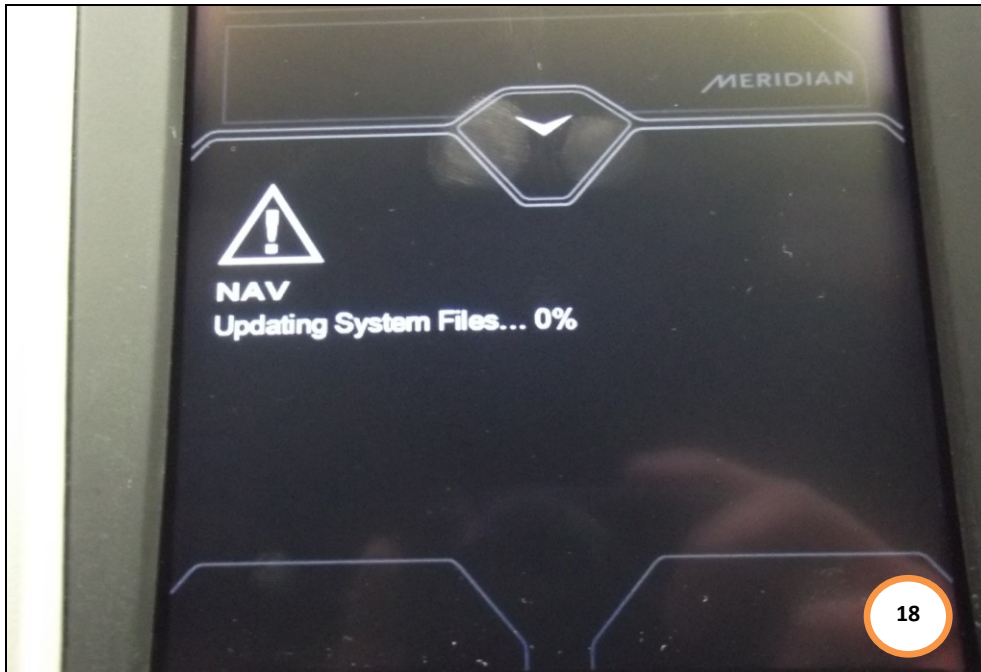
43. When the EMCC pop up disappears the formatting has finished.

44. Press and hold the centre IRIS button for approximately five seconds until the McLaren logo screen appears to reset the unit and to return normal functionality.

45. Insert the USB drive that contains the Satellite Navigation software variant applicable to your market (by referring to the software table on page 1), select Yes,(17)

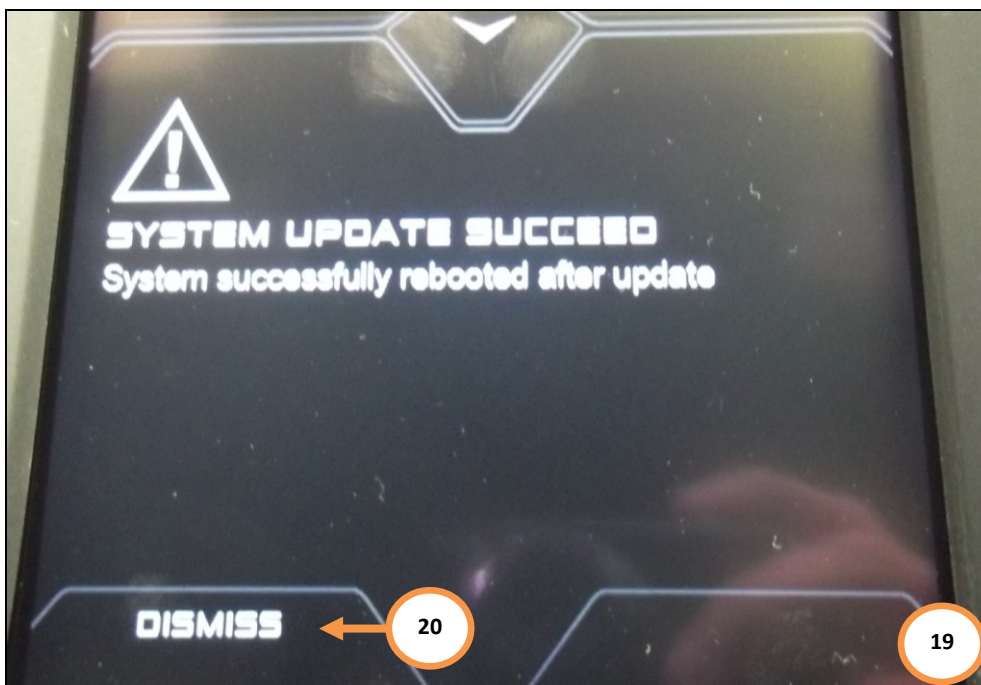


46. The following screen will be displayed (18).



Care Point: The system reboot can take up to three minutes and during this period the screen may appear blank or contain lines.

47. Once the update has completed and rebooted the following screen will be displayed (19), select Dismiss (20) and remove the USB drive.

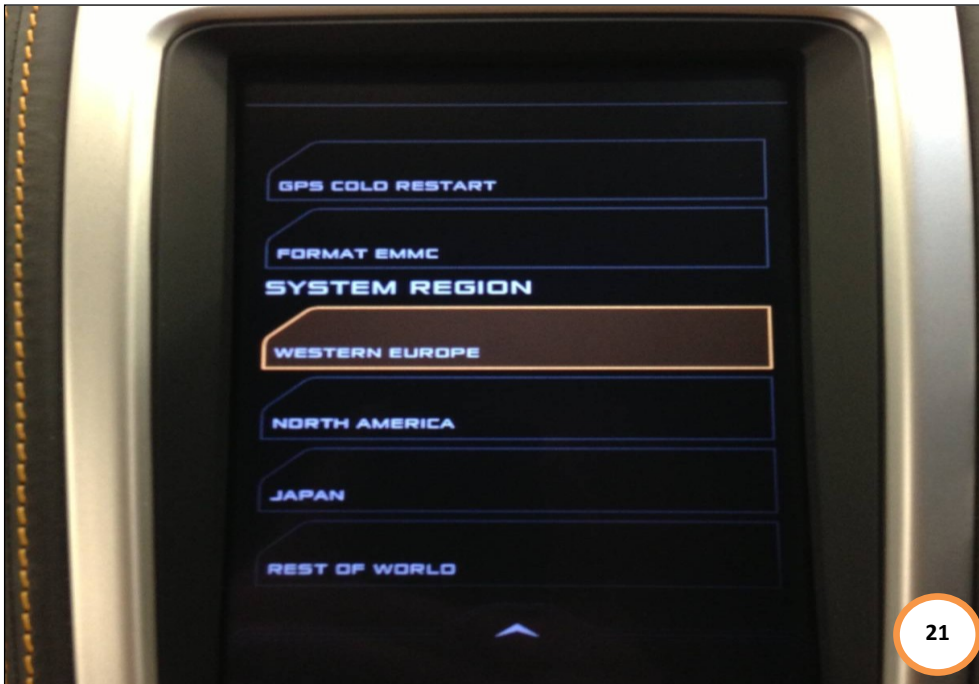


48. Press and hold the centre IRIS button for approximately five seconds until the McLaren logo screen appears to reset the unit and return normal functionality.

49. Repeat steps 39 to 40 on vehicles that have had Navigation software installed and then proceed.

50. Select the region you require to enable the correct radio frequency for your country (21), refer to Region information below :-

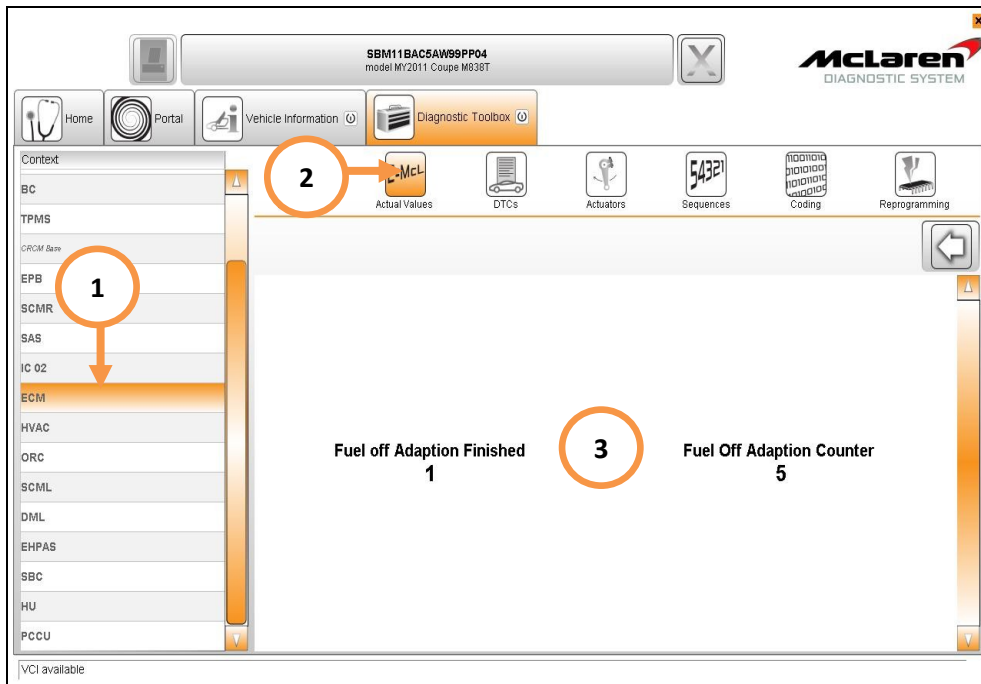
- WESTERN EUROPE:- Austria, Belgium, France, Germany, Great Britain, Italy, Monaco, Netherlands, Spain, Sweden, Switzerland, Hong Kong, China, Australia, Singapore, Bahrain, Kuwait, Qatar, Saudi Arabia, UAE (Abu Dhabi, Dubai), South Africa and Lebanon.
- NORTH AMERICA: - USA, Canada and Canada- Quebec.
- REST OF WORLD: - Do not select.



50. Press and hold the centre IRIS button for approximately five seconds until the McLaren logo screen appears to reset the unit and return normal functionality.

Care point: The VCI must be connected to the MDS with the USB cable to perform the next steps.

51. Start a New MDS session in the MDS Offline mode, refer to Service Information Bulletin 11 S 011 McLaren Diagnostic System (MDS) Offline and proceed to complete the remaining procedures.
52. Select ECM (1), then Actual Values (2), select the following values as per the screenshot below (3) then select the play button to access the required data screen.



53. If Fuel off Adaption Finished displays 1 proceed to step 55. If value is 0 proceed.
54. Misfire adaptations are performed whilst the car is driven with the gearbox set to manual mode and with the A/C Off.
55. Perform eleven successive fuel cuts from above 4000rpm for a 5 second duration (a fuel cut off will occur when the accelerator pedal is fully released).
56. Once the Fuel off Adaption Counter reaches 11, the Fuel off Adaption Finished counter will display one; the misfire adaptations have been learned. The Fuel off Adaption Counter will display Zero and then start to count again when further fuel cut offs occur, this is correct operation and no further action is required.
57. Connect a mobile phone via Bluetooth and confirm functionality is Ok.
58. The vehicle requires to be outside for the Satellite Navigation to locate the correct vehicle position on the map; this can take up to five minutes. Then enter a destination and drive the vehicle to confirm functionality is ok.

Please contact your Regional Aftersales Manager should you have any questions relating to the information contained in this bulletin.

WARRANTY INFORMATION

DESCRIPTION	RESOLUTION CODE	TOTAL REPAIR TIME
Software platform update	M0M30126A33A4A07	1.00

PARTS INFORMATION

PART DESCRIPTION	PART NUMBER	QUANTITY	ORDER PROCESS
N/A	N/A	N/A	N/A
