

SERVICE INFORMATION BULLETIN

TITLE : Service Disconnect Cover Seal Replacement

DOCUMENT # : 12 N 001

AFFECTED VEHICLES : McLaren P1™

SITUATION : Quality Engineering at McLaren Automotive have identified the importance for the Service Disconnect cover seal to be replaced if the seal is damaged, worn or coming adrift in case the cover has been removed for a reason. As the fitment of this seal is quite crucial to its performance, a template is supplied to support in the fitment.

PROCEDURE : The following document outlines the steps that have to be followed when the seal has to be replaced. In addition the template for fitment is available in the appendix of this document.

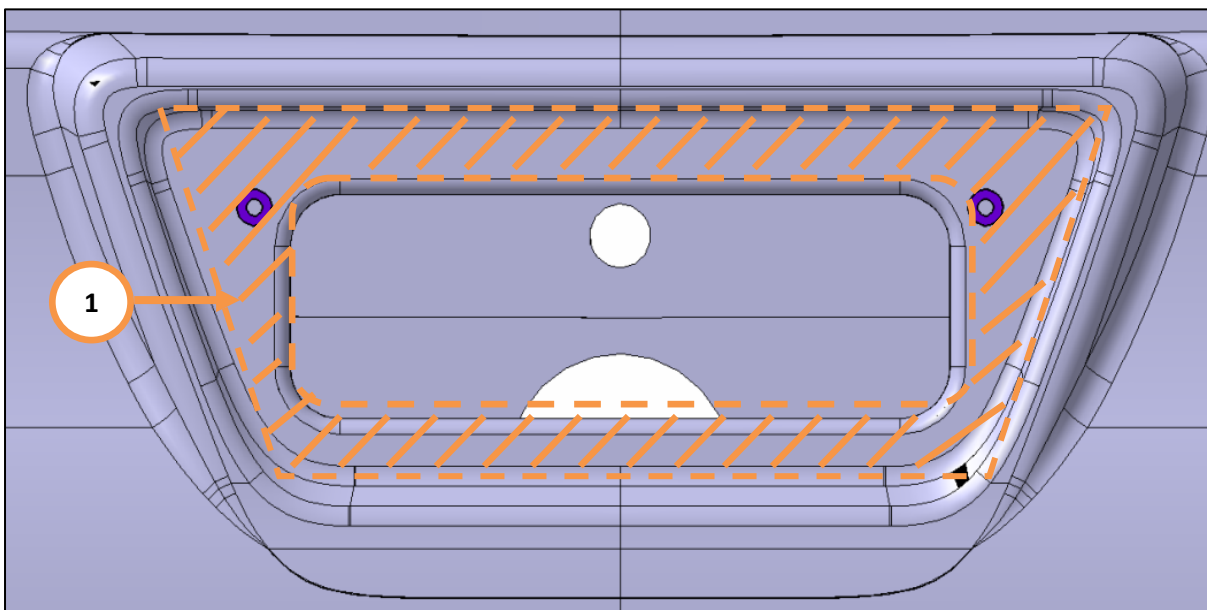
INSTRUCTIONS :

1. With the use of Betaclean 3900 (or similar isopropyl alcohol product) clean the highlighted mounting surface (1), where the tape will bond, ensuring the surface is dry and free of dust, oil and other impurities.

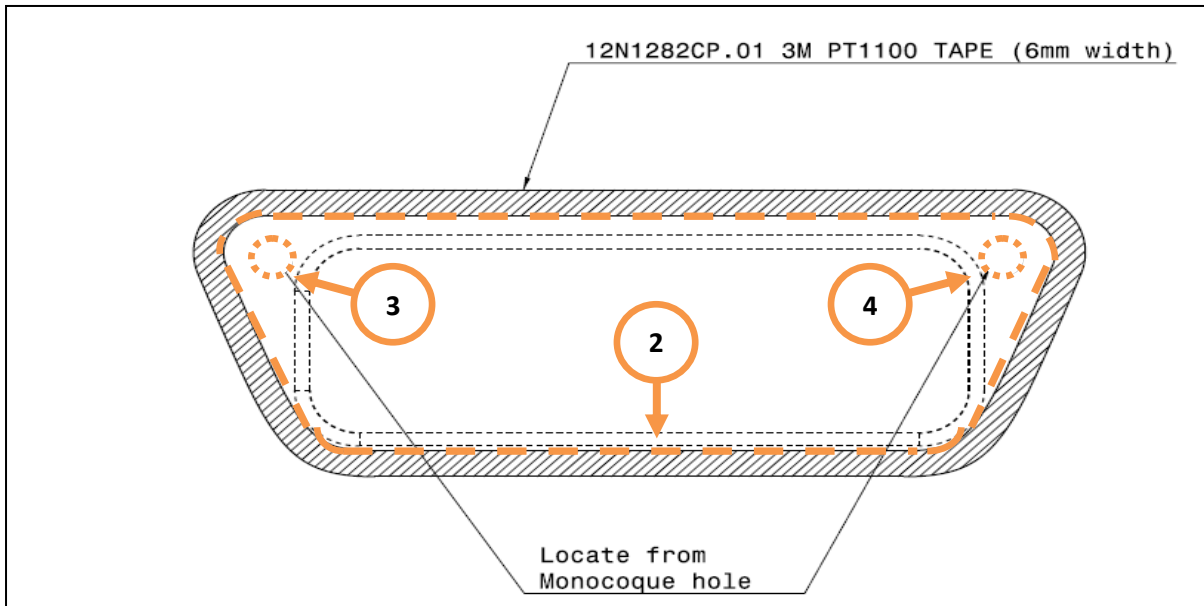
Care Point: The adhesion promoter is to be shaken well before use and applied evenly to the surface.

Care Point: Ensure that no less than 15 minutes and no more than 60 minutes is allowed between the application of the promoter and the installation of the tape.

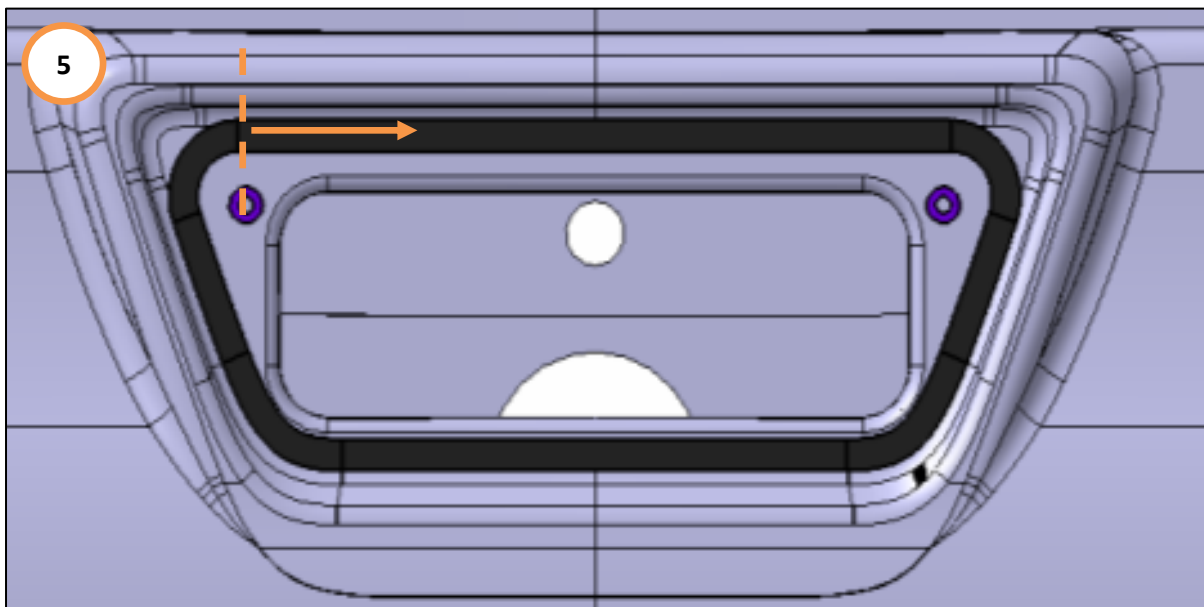
2. Apply adhesion promoter 3M 4298UV to the mounting surface (1) and allow 15 minutes before fitting the tape.



3. Print out the template which is available in the appendix of this document.
4. Cut the template in the areas (2), (3) and (4) illustrated below.



5. Place the template onto the monocoque using the two holes as the reference point.
6. Cut the tape (12N1282CP) into the shape of the template.
7. Peel the backing of the tape and install the tape to the monocoque starting from the top left corner and moving clockwise as illustrated below (5).

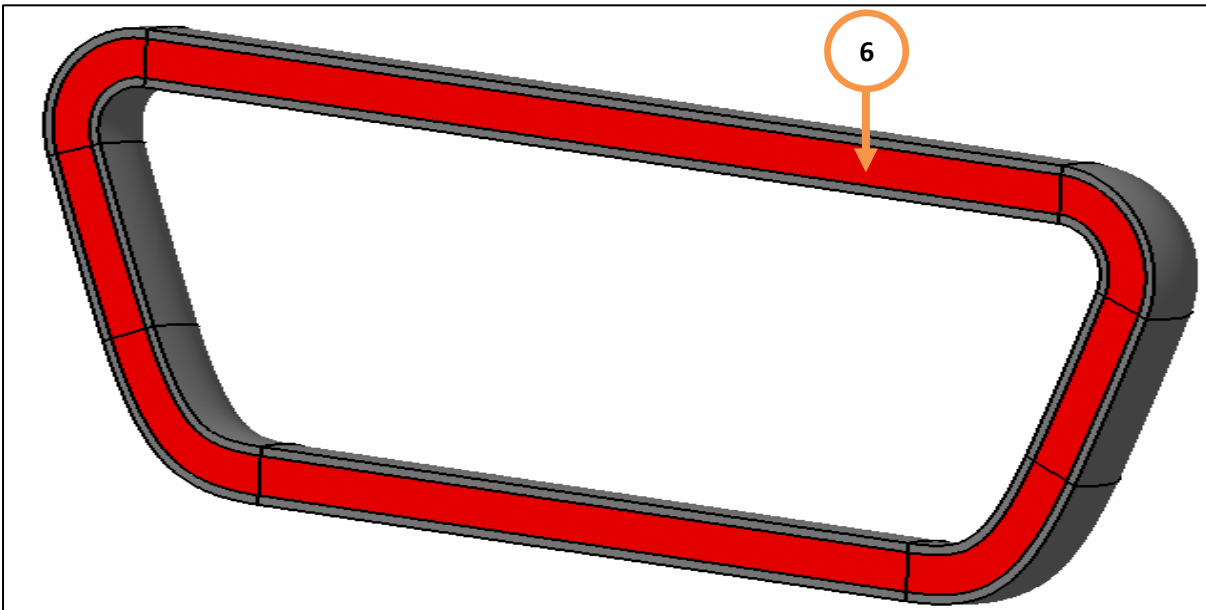


- With the use of Betaclean 3900 (or similar Isopropyl Alcohol product) clean the back surface of the Service Disconnect seal (12N1258CP) (6), ensuring the surface is dry and free of dust, oil and other impurities.

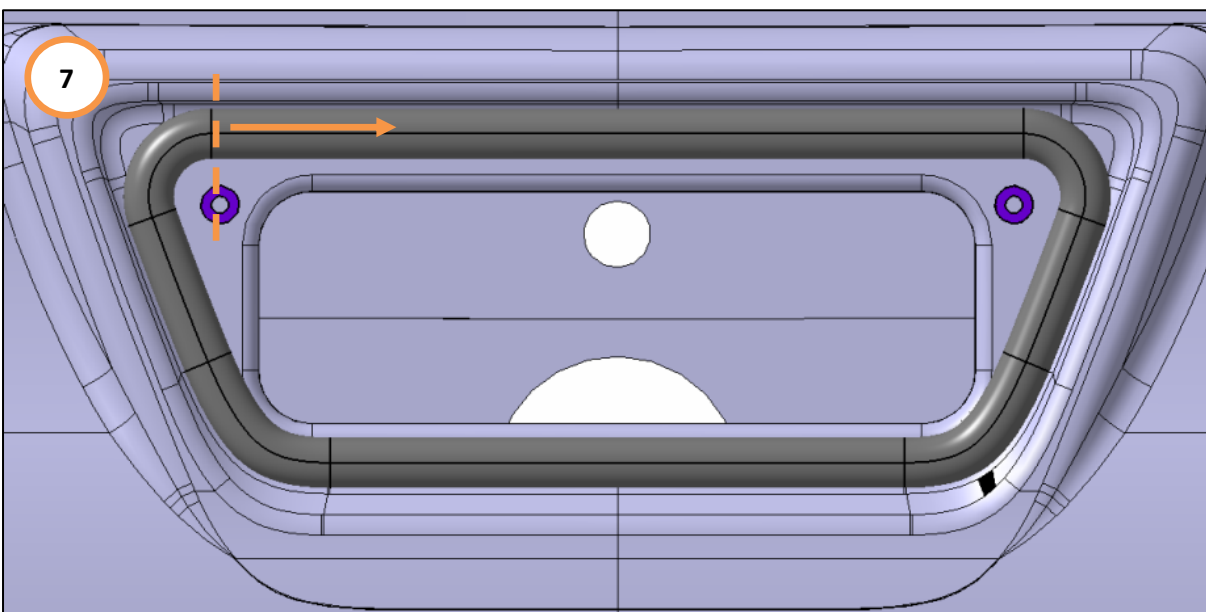
Care Point: The adhesion promoter is to be shaken well before use and applied evenly to the surface.

Care Point: Ensure that no less than 15 minutes and no more than 60 minutes is allowed between the application of the promoter and the installation of the tape.

- Apply adhesion promoter 3M 4298UV to the mounting surface (6) and allow 15 minutes before installation.



- Remove the cover of the tape bonded into the monocoque and install the Service Disconnect seal onto the tape starting from the top left corner and moving clockwise as illustrated below (7).



- Allow approximately 10 minutes for the tape to fully adhere.

Please contact your Regional Aftersales Manager should you have any questions relating to the information contained in this bulletin.

WARRANTY INFORMATION

DESCRIPTION	RESOLUTION CODE	TOTAL REPAIR TIME
Service Disconnect cover seal replacement	BHNA0803A24A9901	0.5

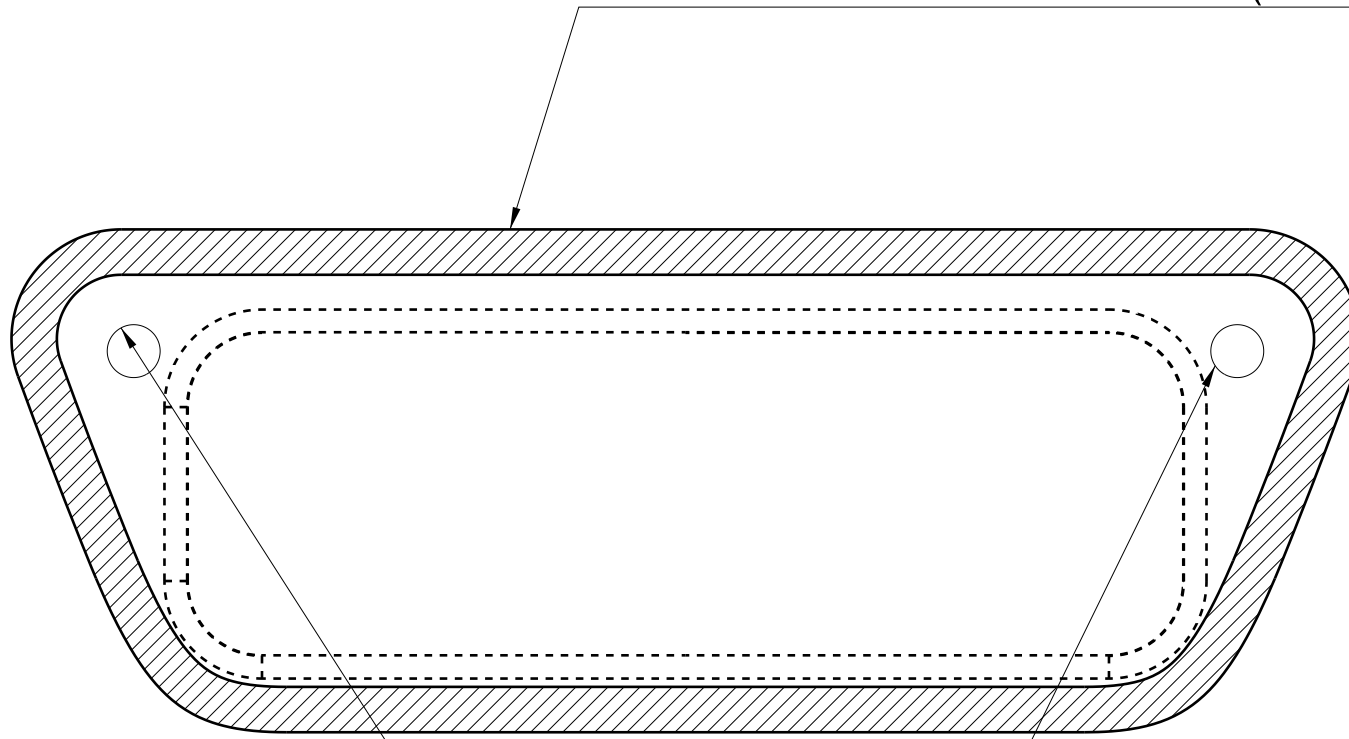
PARTS INFORMATION

PART DESCRIPTION	PART NUMBER	QUANTITY	ORDER PROCESS
Service Disconnect Seal	12N1258CP	1	Unipart
3M Tape (6mm width)	12N1282CP	1	Unipart
3M Adhesion Promoter 4298UV*	70070697241	1	3M
Betaclean 3900**	N/A	N/A	N/A

* for alternative product please contact your local 3M distributor.

** or similar Isopropyl Alcohol product

12N1282CP.01 3M PT1100 TAPE (6mm width)



Locate from
Monocoque hole