

SERVICE INFORMATION BULLETIN

TITLE : Heating, Ventilation and Air Conditioning (HVAC) module configuration procedure

DOCUMENT # : 11 M 054

AFFECTED VEHICLES : 12C Coupe and Spider

SITUATION : Quality Engineering at McLaren Automotive would like to inform dealers that the HVAC module must be reconfigured when replaced or reflashed with platform software 10.2 or later.

PROCEDURE : Please follow the procedure outlined in this document below which explains how to reconfigure the HVAC module.

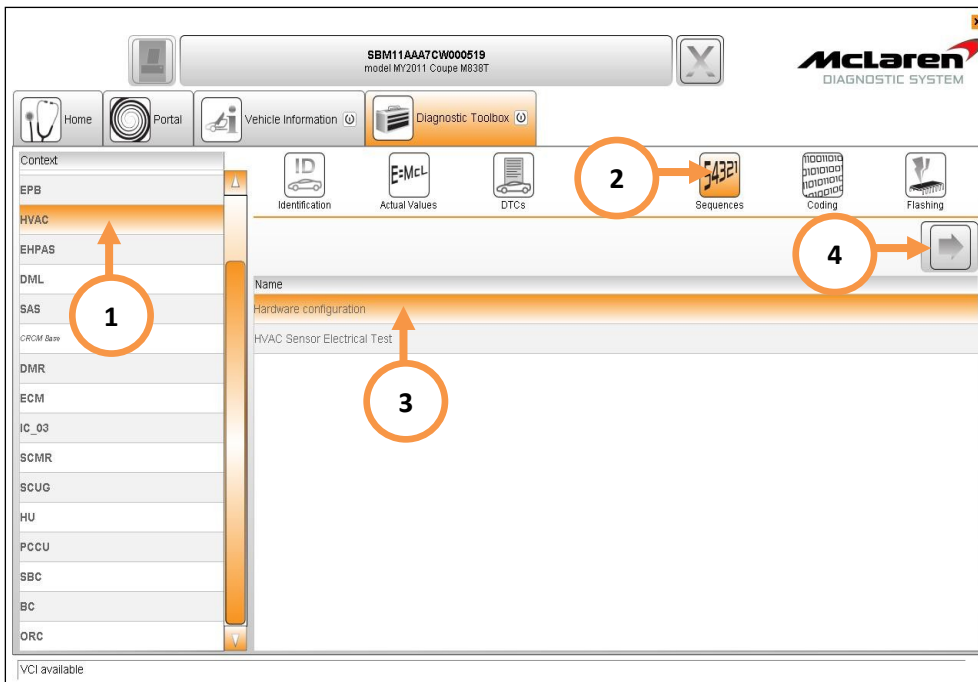
Care point: Pre model year 2013 default configuration may be different if, later HVAC hardware is installed; this is explained at steps 9 to 11.

The chart below shows the default values for pre and post model year 2013 HVAC module configuration.

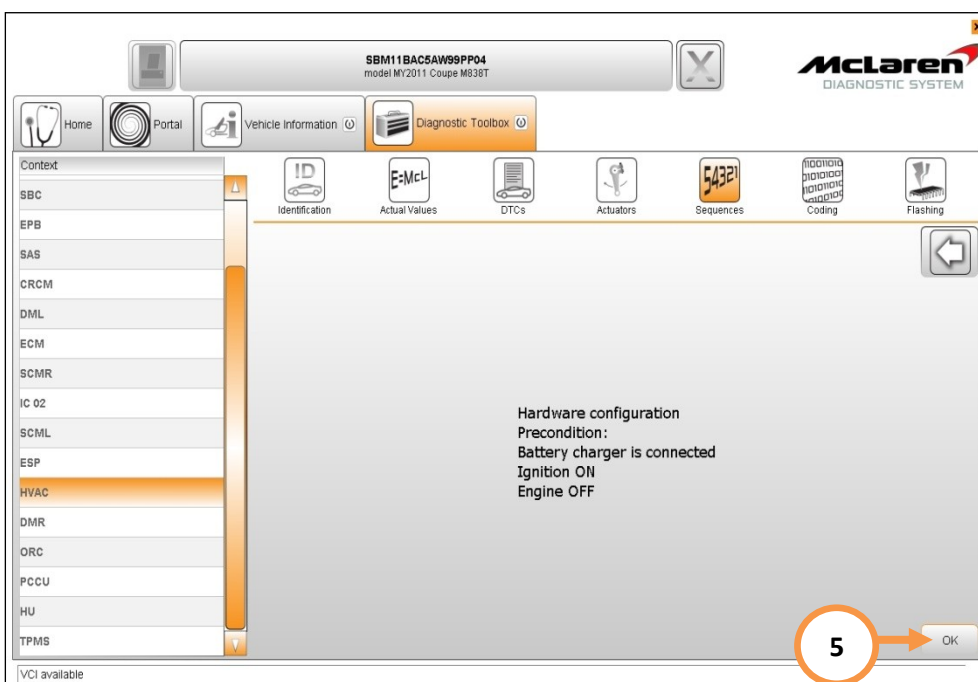
Hardware configuration values	Pre Model Year 13	Post Model Year 13
HVAC Pressure	Default: Version 1	Default: Version 1
HVAC Blend	No blend feature	Blend feature
HVAC PWM	Default: PWM Version 1	Default: PWM Version 1
HVAC Switch pack	Original switch pack	Auto Lo
HVAC Solar Pull Down	Default: Solar 10K	Default: Solar 10K

HVAC MODULE CONFIGURATION:

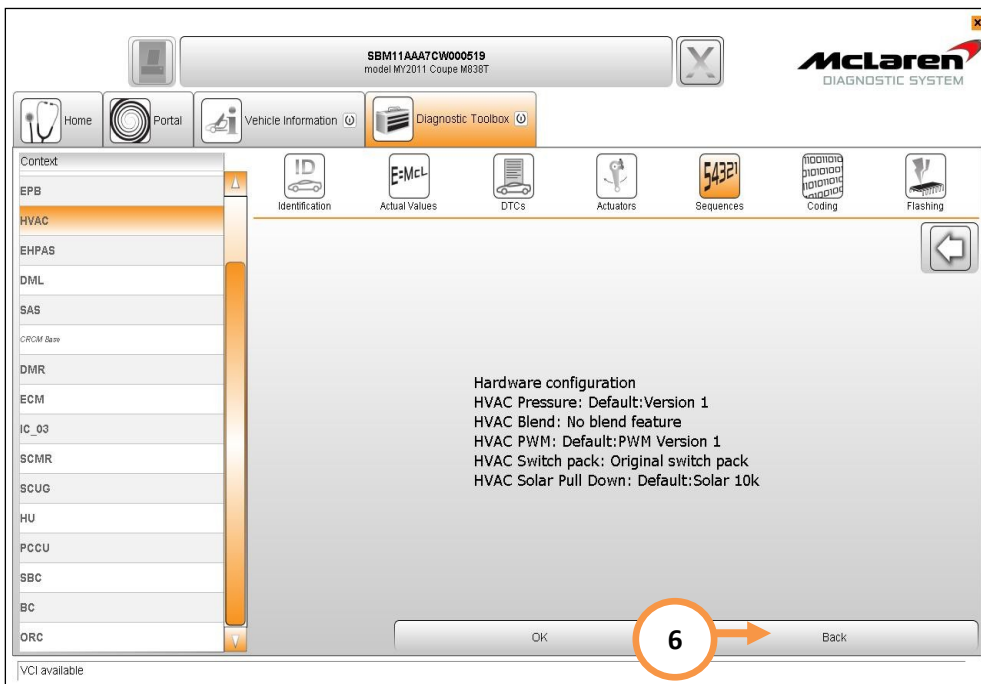
1. Prior to replacing the HVAC module or reprogramming, you must check the current configuration values as below. If you have no communication with the HVAC module then use the default configuration values listed in the chart on page 1.
2. Connect the McLaren Diagnostic System (MDS) to the vehicle.
3. Select HVAC (1), Select sequences (2), then Hardware configuration (3), then select the arrow button (4) to proceed.



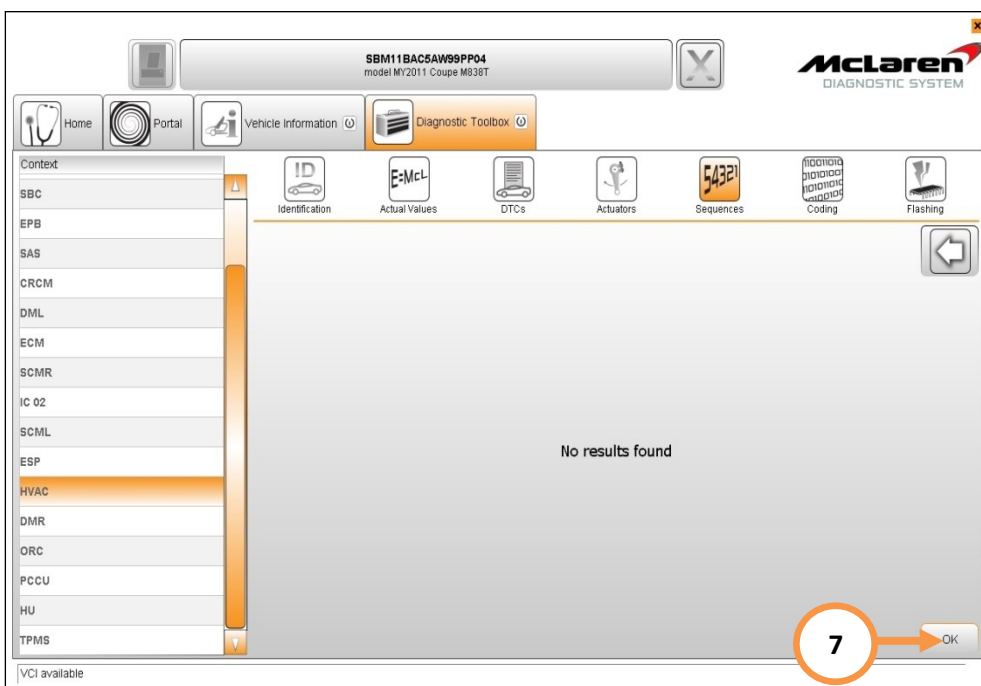
4. The following screen will appear, select OK (5).



5. HVAC Hardware configuration will be displayed; example below is pre model year 2013. Make a note of how the module has been configured. Select Back to abort the sequence (6).



6. Proceed and replace or reflash the module as required and then proceed to HVAC Hardware configuration.
7. No results found will be displayed if the HVAC module has no stored configuration data. Select OK (7).



8. Proceed and configure the module using the configuration data you have obtained from the module, or use the information from the chart on page 1.

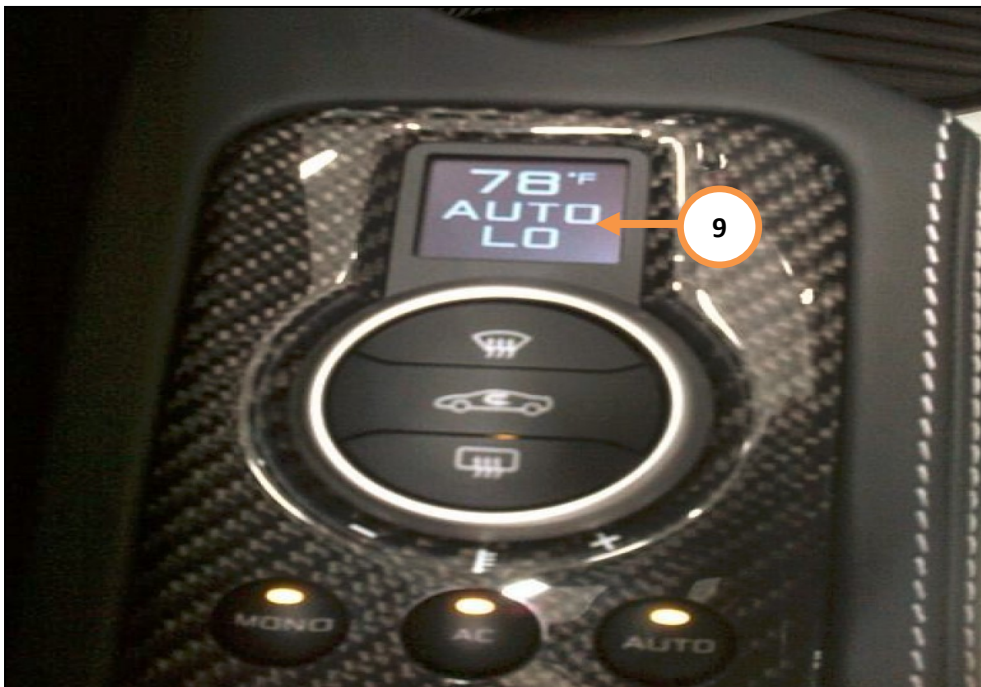
Care point: Previous level Distribution Unit – HVAC and Switch Panel should not be fitted to a model year 2013 vehicle or later.

9. When fitting Distribution Unit – HVAC part number 11A6274CP to a pre model year 2013, the module HVAC blend must be re-configured from 'No blend feature' to 'Blend feature'.
10. It is possible to determine what level Distribution Unit – HVAC part is fitted to the vehicle by removing the HVAC shroud and locating the supplier label (8). If there is no label fitted, the Distribution Unit – HVAC is the previous level, and therefore should be configured to 'No blend feature'. If the label is fitted then the Distribution Unit – HVAC must be configured to 'Blend feature'.



11. When fitting the latest level Switch Panel – HVAC (part numbers listed below) to drivers and passenger door casings as a pair, you can enable the Auto Lo function at the customers' request. To enable this new function you will need to re-configure the HVAC Switch pack configuration from 'Original switch pack' to 'Auto Lo'. The only way to determine what level of Switch Panel – HVAC, is fitted is either to reconfigure the HVAC module and look at the display to see if Auto Lo has appeared (9) or remove both Switch Panels – HVAC and compare part the numbers on the label (10) with the table below.

Switch Panel - HVAC - Carbon - Driver	11M2365CP
Switch Panel - HVAC - Carbon - Passenger	11M2366CP
Switch Panel - HVAC - Driver	11M2363CP
Switch Panel - HVAC - Passenger	11M2364CP



Please contact your Regional Aftersales Manager should you have any questions relating to the information contained in this bulletin.
