



Technical Service Bulletin

SUBJECT:		No: TSB-13-00-002	
2013 OUTLANDER SPORT LIMITED EDITION UPDATE – SERVICE MANUAL REVISION		DATE: February, 2013	
		MODEL: 2013 Outlander Sport	
CIRCULATE TO:	<input type="checkbox"/> GENERAL MANAGER	<input checked="" type="checkbox"/> PARTS MANAGER	<input checked="" type="checkbox"/> TECHNICIAN
<input checked="" type="checkbox"/> SERVICE ADVISOR	<input checked="" type="checkbox"/> SERVICE MANAGER	<input checked="" type="checkbox"/> WARRANTY PROCESSOR	<input type="checkbox"/> SALES MANAGER

PURPOSE

This TSB updates Group 00 – General of the service manual with information for 2013 Outlander Sport Limited Edition.

AFFECTED VEHICLES

2013 Outlander Sport Limited Edition (U.S. only) built from February, 2013.

AFFECTED SERVICE MANUALS

2013 Outlander Sport Service Manual:

Group 00 – General > Vehicle Identification

Group 00 – General > General Data and Specifications

Group 00 – General > Recommended Lubricants and Lubricant Capacities Table

Continued

Copyright 2013, Mitsubishi Motors North America, Inc.

(3966)

The information contained in this bulletin is subject to change. For the latest version of this document, go to the Mitsubishi Dealer Link, MEDIC, or the Mitsubishi Service Information website (www.mitsubishitechinfo.com).

Add the information from pages 2 – 3 to the 2013 Outlander Sport Service Manual: Group 00 – General
 > Vehicle Identification

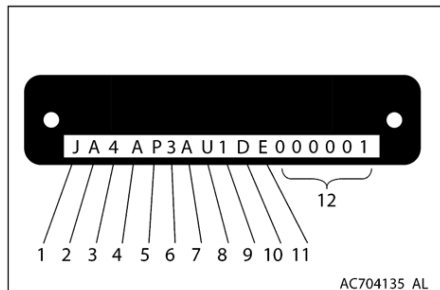
**GENERAL
 VEHICLE IDENTIFICATION**

VEHICLE IDENTIFICATION

VEHICLE IDENTIFICATION NUMBER PLATE

M1001005502603

CODE CHART



No.	Item	Content	
1	Country	4	USA
2	Make	A	Mitsubishi Motors Corporation.
3	Vehicle type	4	Multi-purpose vehicle
4	Others	Gross Vehicle Weight Rating/Passenger car Restraint System	
		A	4001-5000 lbs/Curtain Airbags (1st and 2nd Seat) and Seat-Mounted Side Airbags
5	Line	P	OUTLANDER SPORT (FWD) <Vehicles for USA and Puerto Rico>
		R	OUTLANDER SPORT (AWD) <Vehicles for USA and Puerto Rico>
		H	RVR (FWD) <Vehicles for Canada>
		J	RVR (AWD) <Vehicles for Canada>
6	Price class	3	Medium
		4	High
		5	Premium <<Added>>
7	Body	A	5-door wagon
8	Engine	U	2.0 L DOHC (4B11) MIVEC
9	Check digits*	0, 1, 2, 3, -----9, X	
10	Model year	D	2013 year
11	Plant	E	Normal
12	Serial number	000001 to 999999	

NOTE: *: Check digit means a single number, or letter X, used to verify the accuracy of transcription of vehicle identification number.

GENERAL
 VEHICLE IDENTIFICATION

VEHICLE IDENTIFICATION

VEHICLE IDENTIFICATION NUMBER LIST

VEHICLES FOR USA (FOR FEDERAL EMISSION REGULATION) <<Added>>

Model code		VIN (Except sequence number)	Engine model	Transaxle model	Fuel system
GA2W	XTXHL4M	4A4AP5AU_DE_	4B11 [1,998 cm ³ (121.9 cu in)]	F1CJA (FWD, INVECS-III CVT with sport mode)	MFI
	XTXHZL4M	4A4AR5AU_DE_	DOHC MIVEC gasoline engine]	W1CJA (AWD, INVECS-III CVT with sport mode)	

VEHICLES FOR PUERTO RICO

Model code		VIN (Except sequence number)	Engine model	Transaxle model	Fuel system
GA2W	XTXHL4M	4A4AR5AU_DE_	4B11 [1,998 cm ³ (121.9 cu in)] DOHC MIVEC gasoline engine]	F1CJA (FWD, INVECS-III CVT with sport mode)	MFI

Add the following information to the 2013 Outlander Sport Service Manual: Group 00 – General > Vehicle Identification > Vehicle Identification Number (Chassis Number)

**GENERAL
VEHICLE IDENTIFICATION**

No.	Item	Content	
5	Line	P	OUTLANDER SPORT (FWD) <Vehicles for USA and PUERTO RICO>
		R	OUTLANDER SPORT (AWD) <Vehicles for USA and PUERTO RICO>
		H	RVR (FWD) <Vehicles for Canada>
		J	RVR (AWD) <Vehicles for Canada>
6	Price class	3	Medium
		4	High
		5	Premium <<Added>>
7	Body	A	5-door wagon
8	Engine	U	2.0 L DOHC (4B11) MIVEC
9	Check digits*	0, 1, 2, 3, -----9, X	
10	Model year	D	2013 year
11	Plant	E	Normal
12	Serial number	000001 to 999999	

NOTE: *: Check digit means a single number, or letter X, used to verify the accuracy of transcription of vehicle identification number.

VEHICLE INFORMATION CODE PLATE

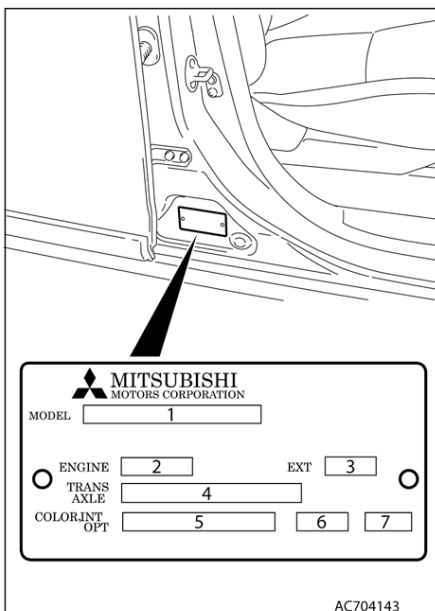
M1001005403074

The vehicle information code plate is riveted to the face of the passenger's door sill.

CODE CHART

No.	Item	Example	Content
1	MODEL	GA2W	GA2W: Vehicle model
		XTHHZL2M	XTHHZL2M: Model series
2	ENGINE	4B11	Engine model
3	EXT	A31A	Exterior code
4	TRANS AXLE	W1CJA	W1CJA: Transmission model
		6466	6466: Rear differential final gear ratio (a decimal point is omitted)
5	COLOR	A31	Body color code
6	INT	12X	Interior code
7	OPT	Z34	Equipment code

For monotone color vehicles, the body color code shall be indicated.



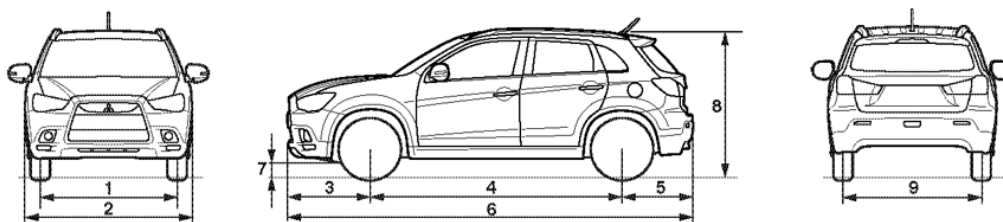
Add the following information to the 2013 Outlander Sport Service Manual: Group 00 – General > General Data and Specifications

GENERAL
GENERAL DATA AND SPECIFICATIONS

GENERAL DATA AND SPECIFICATIONS

M1001000908024

VEHICLES FOR USA



ACA00010 AD

<<Added>>

(VEHICLES FOR FEDERAL EMISSION REGULATION)

Item		GA2W			
			XTXHL4M	XTXH4L4M	
Vehicle dimension mm (in)	Front track	1	1,525 (60.0)	1,525 (60.0)	
	Overall width	2	1,770 (69.7)	1,770 (69.7)	
	Front overhang	3	870 (34.3)	870 (34.3)	
	Wheel base	4	2,670 (105.1)	2,670 (105.1)	
	Rear overhang	5	755 (29.7)	755 (29.7)	
	Overall length	6	4,295 (169.1)	4,295 (169.1)	
	Ground clearance (unladen)	7	215 (8.5)	215 (8.5)	
	Overall height (unladen)	Without roof rail	8	1,630 (64.2)	1,630 (64.2)
		With roof rail		1,640 (64.6)	1,640 (64.6)
Rear track	9	1,525 (60.0)	1,525 (60.0)		
Vehicle weight kg (lb)	Kerb weight	Without optional parts	1,420 (3,131)	1,485 (3,274)	
		With optional parts	1,438 (3,170)	1,514 (3,337)	
	Max. gross vehicle weight		1,970 (4,343)	1,970 (4,343)	
	Max. axle weight rating-front		1,030 (2,271)	1,030 (2,271)	
	Max. axle weight rating-rear		1,000 (2,205)	1,000 (2,205)	
Seating capacity		5	5		
Engine	Model code		4B11	4B11	
	Type		DOHC MIVEC	DOHC MIVEC	
	Piston displacement cm ³ (cu in)		1,998 (121.9)	1,998 (121.9)	
	Maximum output kW/r/min (HP/r/min)		110/6,000 (148/6,000)	110/6,000 (148/6,000)	
	Maximum torque N·m/r/min (ft·lb/r/min)		197/4,200 (145/4,200)	197/4,200 (145/4,200)	
Fuel system	Fuel supply system		MFI	MFI	
Transmission	Model code		F1CJA	W1CJA	
	Type		FWD, INVECS-III CVT with sport mode	AWD, INVECS-III CVT with sport mode	
Minimum turning radius m (ft)	Body		5.63 (18.5)	5.63 (18.5)	
	Wheel		5.3 (17.4)	5.3 (17.4)	

Add the following information to the 2013 Outlander Sport Service Manual: Group 00 – General >
Recommended Lubricants and Lubricant Capacities Table

GENERAL
RECOMMENDED LUBRICANTS AND LUBRICANT CAPACITIES TABLE

**RECOMMENDED LUBRICANTS AND LUBRICANT
CAPACITIES TABLE**

M1001001301057

LUBRICANT CAPACITY TABLE

Description		Specification
Engine oil dm ³ (qt)	Oil pan (excluding oil filter)	4.3 (4.54)
LE models built from Feb., 2013	Oil filter	0.3 (0.32)

<<Added>>