



# Technical Service Bulletin

SUBJECT:		No: <b>TSB-13-00-001</b>	
<b>VEHICLE IDENTIFICATION UPDATE – SERVICE MANUAL REVISION</b>		DATE: <b>January, 2013</b>	
		MODEL: <b>2013 Outlander Sport</b>	
CIRCULATE TO:	<input type="checkbox"/> GENERAL MANAGER	<input type="checkbox"/> PARTS MANAGER	<input checked="" type="checkbox"/> TECHNICIAN
<input checked="" type="checkbox"/> SERVICE ADVISOR	<input checked="" type="checkbox"/> SERVICE MANAGER	<input type="checkbox"/> WARRANTY PROCESSOR	<input type="checkbox"/> SALES MANAGER

## PURPOSE

The VIN stamped on the toe board inside the engine compartment was removed and the vehicle information code plate was changed to a label for 2013 vehicles. This TSB updates the service manual with the correct information.

## AFFECTED VEHICLES

2013 Outlander Sport

## AFFECTED SERVICE MANUALS

2013 Outlander Sport, Group 00 – General: Vehicle Identification

Continued

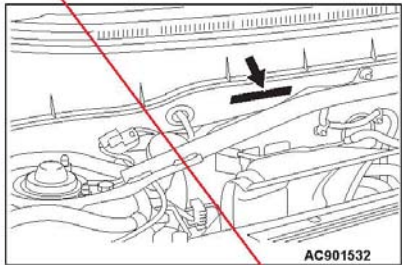
Copyright 2013, Mitsubishi Motors North America, Inc.

(3951)

The information contained in this bulletin is subject to change. For the latest version of this document, go to the Mitsubishi Dealer Link, MEDIC, or the Mitsubishi Service Information website ([www.mitsubishitechinfo.com](http://www.mitsubishitechinfo.com)).

Please delete the VIN chassis number as shown below:

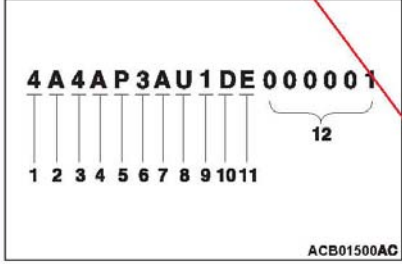
<Deleted>



AC901532

### VEHICLE IDENTIFICATION NUMBER (CHASSIS NUMBER)

The vehicle identification number (chassis number) is stamped on the toeboard inside the engine compartment.



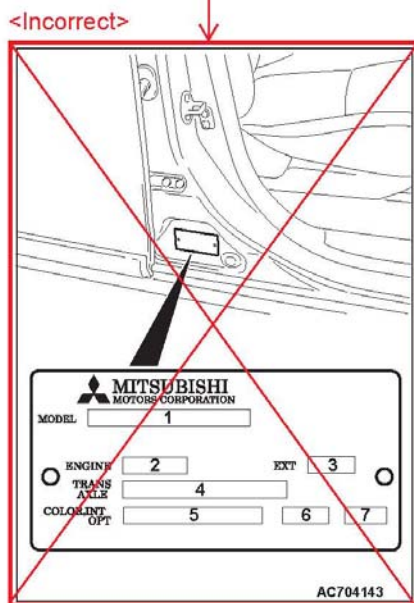
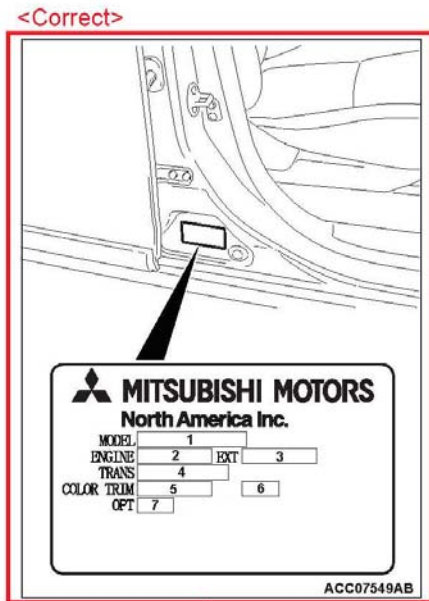
ACB01500AC

#### CODE CHART

No.	Item	Content
1	Country	4 USA
2	Make	A Mitsubishi Motors North America, Inc.
3	Vehicle type	4 Multi-purpose vehicle
4	Others	Gross Vehicle Weight Rating/Passenger car Restraint System
		A 4001-5000 lbs/Curtain Airbags (1st and 2nd Seat) and Seat-Mounted Side Airbags
5	Line	P OUTLANDER SPORT (FWD) <Vehicles for USA and PUERTO RICO>
		R OUTLANDER SPORT (AWD) <Vehicles for USA and PUERTO RICO>
		H RVR (FWD) <Vehicles for Canada>
		J RVR (AWD) <Vehicles for Canada>
6	Price class	3 Medium
		4 High
7	Body	A 5-door wagon
8	Engine	U 2.0 L DOHC MIVEC
9	Check digits*	0, 1, 2, 3, -----9, X
10	Model year	D 2013 year
11	Plant	E Bloomington
12	Serial number	000001 to 999999

*NOTE: \*: Check digit means a single number, or letter X, used to verify the accuracy of transcription of vehicle identification number.*

Please replace the vehicle information code plate with the provided information:



LABEL <Correct>

VEHICLE INFORMATION CODE PLATE <Incorrect>

The vehicle information code plate is riveted to the face of the passenger's door sill. <Incorrect>

label is affixed <Correct>

CODE CHART

No.	Item	Example	Content
1	MODEL	GA2W XTHHZL2M	GA2W: Vehicle model XTHHZL2M: Model series
2	ENGINE	4B11	Engine model
3	EXT	A31A	Exterior code
4	TRANS AXLE	W1CJA 6466	W1CJA: Transmission model 6466: Rear differential final gear ratio (a decimal point is omitted)
5	COLOR	A31	Body color code
6	INT	12X	Interior code
7	OPT	Z34	Equipment code

For monotone color vehicles, the body color code shall be indicated.