



Countries: AUSTRALIA, BRAZIL, CANADA, UNITED STATES, MEXICO, SOUTH AFRICA
Document ID: IK1200643
Availability: ISIS, Bus ISIS, FleetISIS
Revision: 3
Major System: ENGINES
Created: 9/7/2011
Current Language: English
Last Modified: 2/12/2013
Other Languages: [Français](#), [Español](#),
Author: Collins Bonnema
Viewed: 978

[Less Info](#)

Hide Details

Coding Information

Copy Link 	Copy Relative Link 	Bookmark View My Bookmarks	Add to Favorites 	Print 	Provide Feedback 	Helpful 86	Not Helpful 58
----------------------	-------------------------------	--	-----------------------------	------------------	-----------------------------	--------------------------	------------------------------

Title: Freeze Frame Fault Data

Applies To: MaxxForce Engines with OBD Diagnostic Codes

DESCRIPTION

Freeze Frame Fault Data is available for OBD compliant DTCs. When an OBD diagnostic code is set, the ECM will take a signal value snapshot that pertains valuable information for the technician. Freeze Frame Fault Data will often answer the unknown question of "what was that sensor reading when the code set". This is a tool that when used correctly, can be the determining factor of successful repair during intermittent or hard to duplicate codes. Data should be evaluated closely by the technician in determining the sequence of events that triggered the DTC to an active or pending state.

PROCEDURE

ServiceMaxx Default Session under the DTC Tab provides active, pending, & healing DTCs

1. Review DTCs, click "Open" in the Freeze Frame column (Figure 1)

Diagnostic Trouble Codes		Datalink Traffic	DTC Log			Count	Module
DTC	SPN	FMI	Type	Freeze Frame	Message		
N/A	51	4	Pending	Open	ETP signal Out of Range LOW	1	Engine
N/A	102	3	Pending	Open	IMP signal Out of Range HIGH	1	Engine
N/A	102	2	Pending	Open	IMP signal does not agree with BARO	1	Engine
N/A	626	11	Healing	Open	Cold Start Assist fault: Lack of heat in t...	1	Engine
N/A	2630	3	Pending	Open	CACOT signal Out of Range HIGH	1	Engine
N/A	3464	5	Pending	Open	ETC open load/circuit	1	Engine

Build v33.27.201301141131 Probe not needed

Figure 1 - Diagnostic Trouble Codes Tab

2. Click "Save" at the bottom of Freeze Frame Fault Data Window (Figure 2)



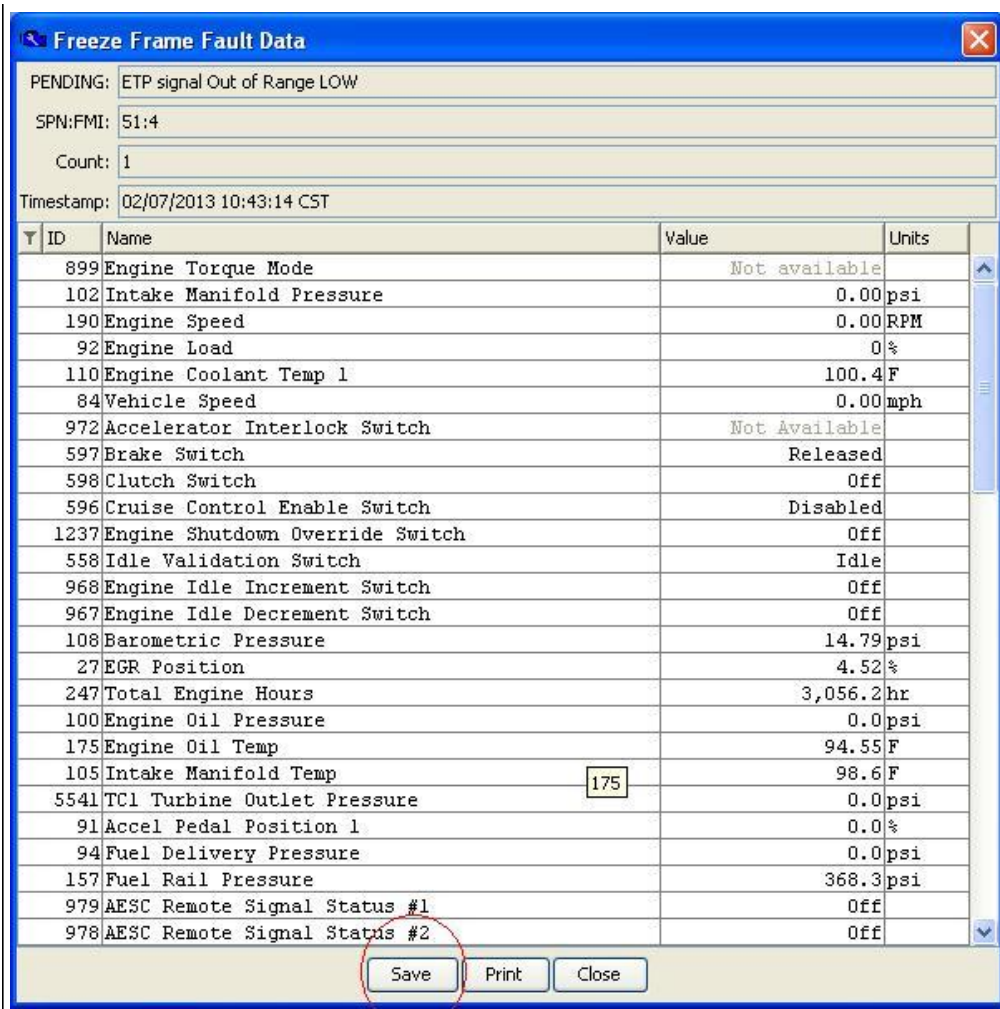


Figure 2 - Freeze Frame Fault Data Window

3. Note file save location, Click "OK" or "Open Directory" in File Save Window. Repeat steps 1-3 for all DTCs (Figure 3)

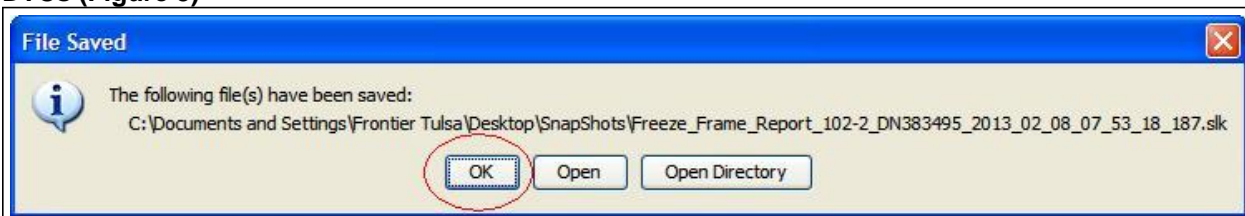
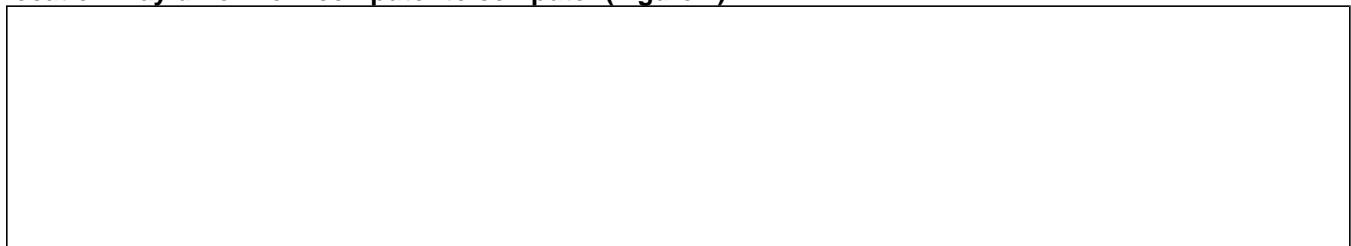


Figure 3 - File Save Window

4. Attach Freeze Frame Fault Data from the file save location to tech service case file if one is open using the same process as attaching a snapshot. Repeat step 4 for all Freeze Frame Fault Data Note: File save location may differ from computer to computer (Figure 4)



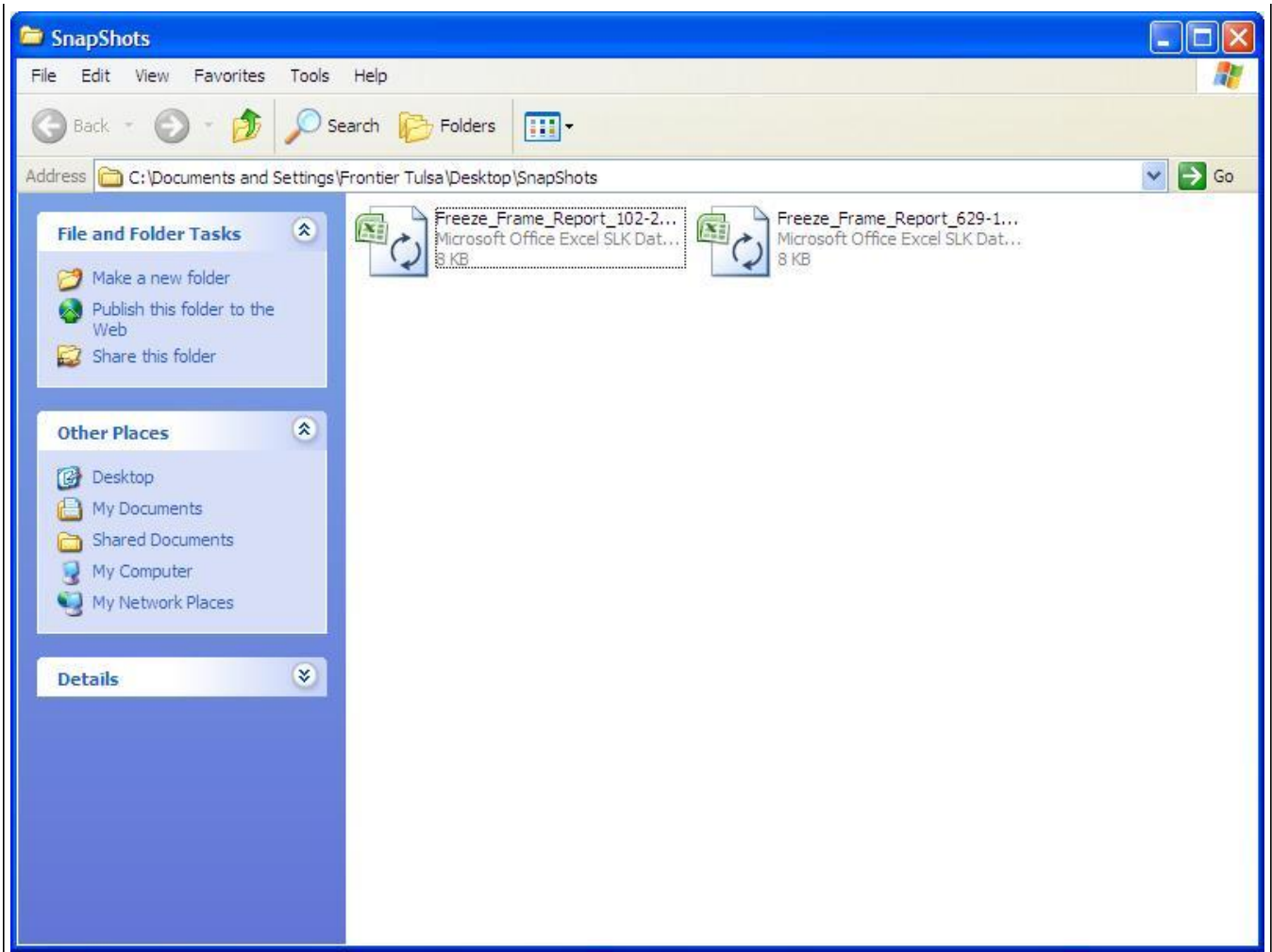


Figure 4 - File Save Location

Hide Details

Feedback Information

Viewed:	977
Helpful:	86
Not Helpful:	58

No Feedback Found

Copyright © 2013 Navistar, Inc.