



Countries: CANADA, UNITED STATES, MEXICO **Document ID:** IK0800374
Availability: ISIS, Bus ISIS, Body Builder **Revision:** 1
Major System: ELECTRICAL SYSTEM **Created:** 6/17/2012
Current Language: English **Last Modified:** 2/27/2013
Other Languages: NONE **Author:** Jon Pierce
Viewed: 576

[Less Info](#)

Hide Details

Coding Information

Copy Link 	Copy Relative Link 	Bookmark View My Bookmarks	Add to Favorites 	Print 	Provide Feedback 	Helpful 6	Not Helpful 1
----------------------	-------------------------------	--	-----------------------------	------------------	-----------------------------	-------------------------	-----------------------------

Title: How To Get A Helios Capture

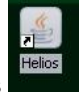
Applies To: all 1939 and 1708 multiplexed trucks

DESCRIPTION

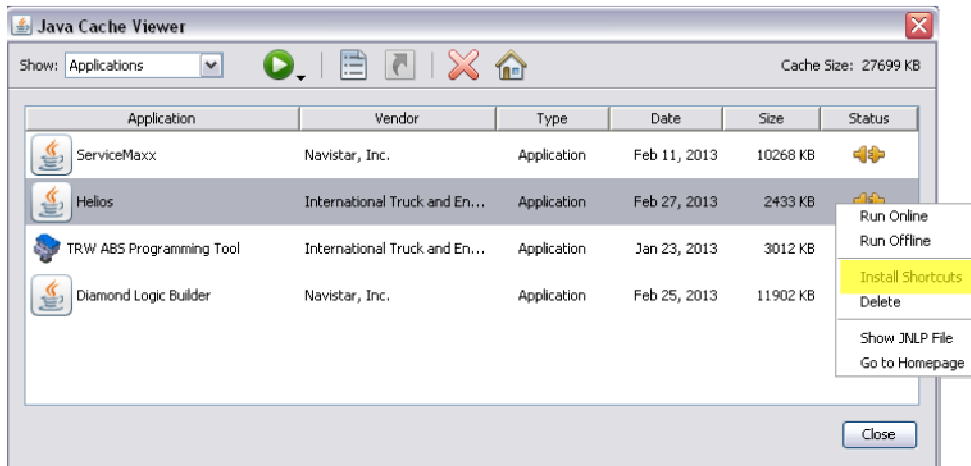
Helios is a java based diagnostic tool that will allow you to view all data link messages on both 1939 and 1708 data links. What follows is step by step on how to download the program if you do not already have it, how to navigate the tool, and how to save a capture to attach to a case file for review.

1. [CLICK HERE TO DOWNLOAD HELIOS](#) (skip to step 3 if program is already installed.)

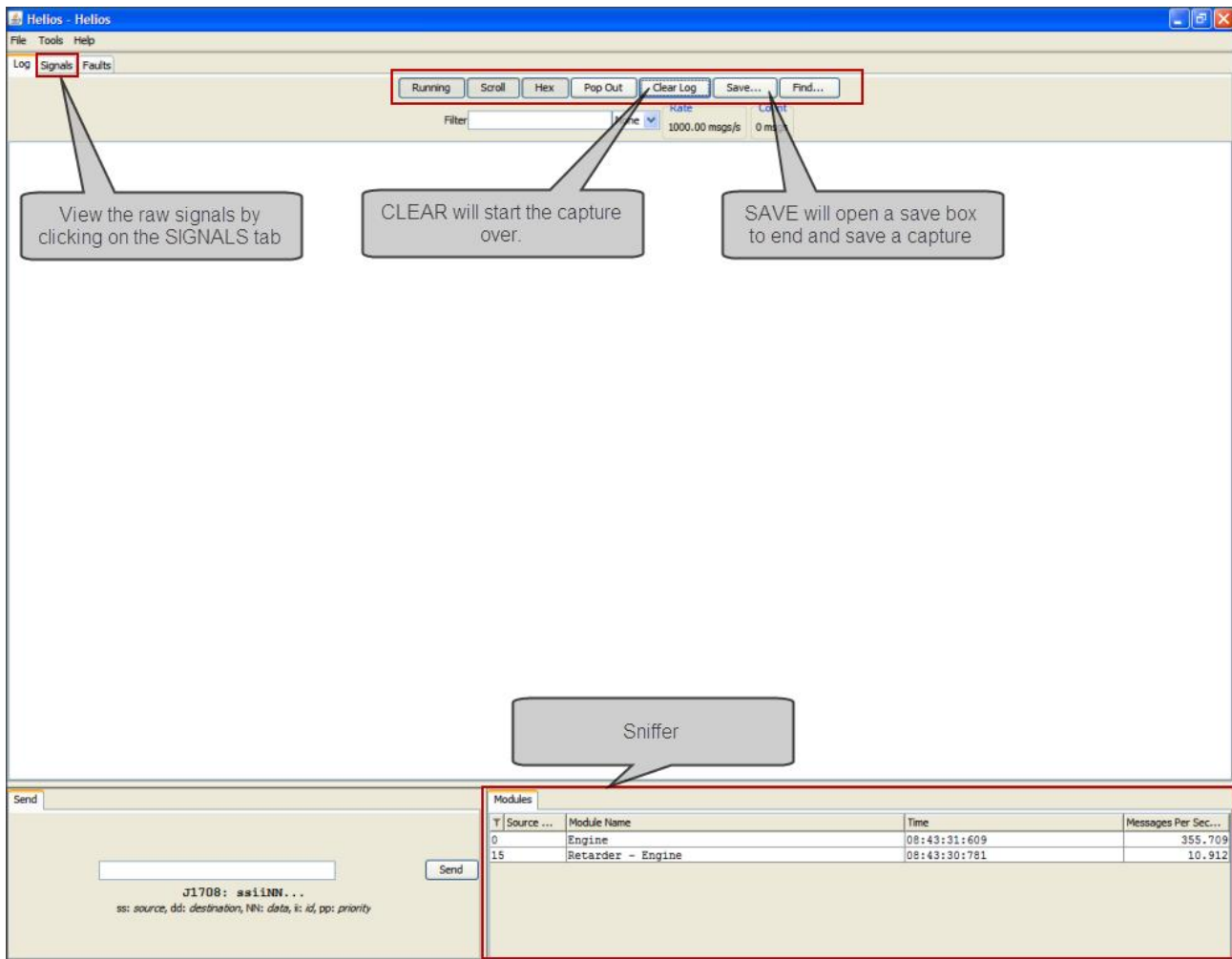


If a short cut to the program like this  does not appear on your desktop you will have to run the Java viewer to add the shortcut to your desktop.

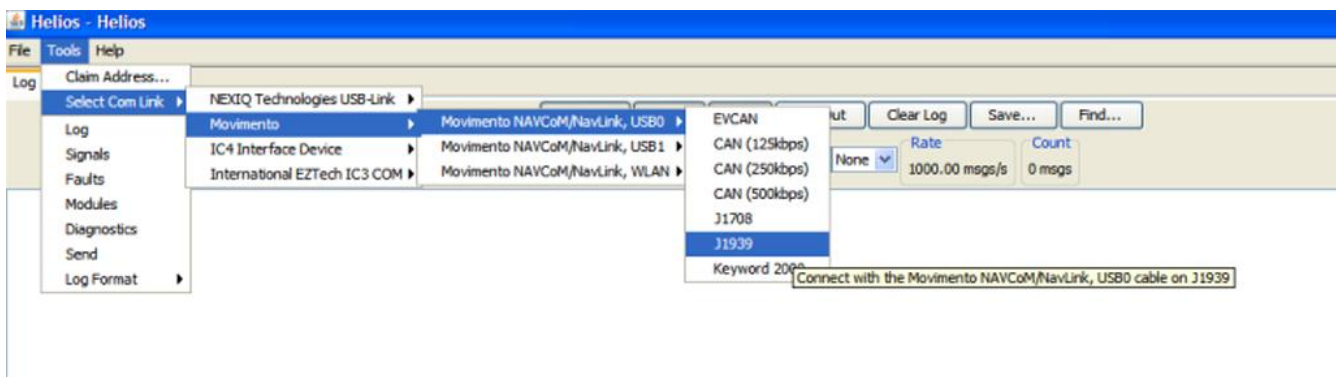
2. **CLICK START - RUN - Type "javaws -viewer"** and click **OK**. The following will appear. Right click "**Helios**" then click **install shortcuts**. The shortcut will now appear on your desktop and you can now close the Java Viewer.



3. Launch the program by double clicking the shortcut installed on your desktop. The main screen below will appear.



4. Establish communication by selecting tools from the menu bar and selecting your communication device.



5. You can view your signal by selecting the **Signals** Tab. The signals below are the actual values the modules are broadcasting onto the data link. There will be a lot of data displayed on this tab, you can remove columns by right clicking on the column header and then left clicking to select/deselect columns. From this screen you can sort by column or search for a specific signal. Below is the recommended set up for viewing the most useable data while on the **Signals** tab.

The screenshot shows the Helios software interface. The main window displays a list of signals with columns for Name, PGN, Module, Value, Units, and Description. A red box highlights a portion of this list, and six numbered boxes (1-6) are placed over specific columns to identify them. Below the signal list is a 'Send' window with a text input field and a 'Send' button. At the bottom right, there is a 'Modules' table showing source and destination information.

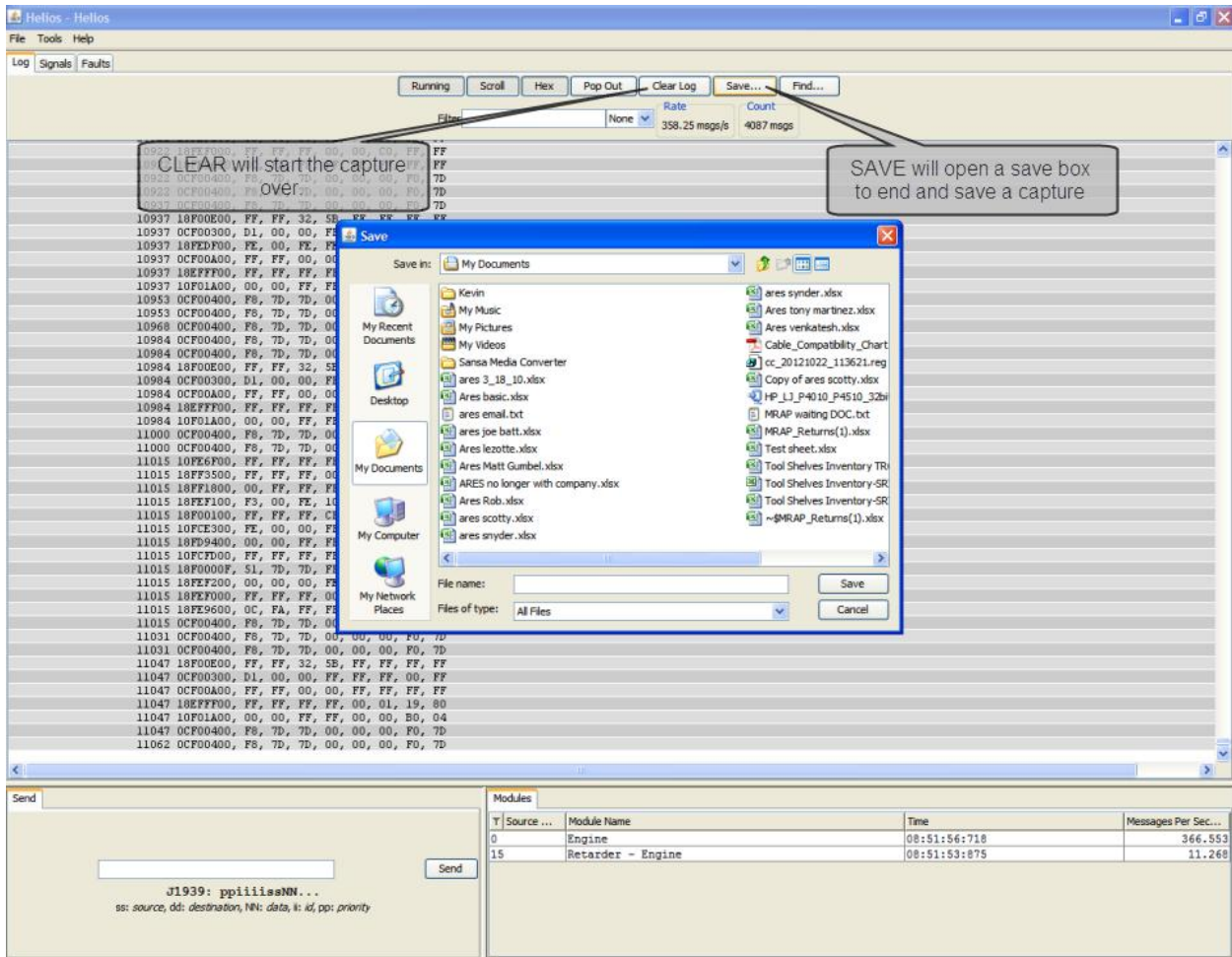
Name	PGN	Module	Value	Units	Description
Aftertreatment #1 Ignition	00	Engine	not available	No Units	Indicates whether aftertreatment #1 ignition circuit is energized by the...
Retarder Location	00	Retarder - Engine	(Primary) Engine...	No Units	This parameter defines whether the "torque/speed curve" defined by the...
ABS/EBS Amber Warning	00	Engine		No Units	This parameter commands the ABS/EBS amber/yellow optical warning signa...
Percent Torque At Idle	00	Retarder - Engine		percent	The torque limit that indicates the available retarder torque which ca...
Engine Auxiliary Coolant Pressure	00	Engine		percent	Temperature of coolant found in the intercooler which is located after...
Manufacturer Specific Torque Limit	00	Retarder - Engine		percent	The torque limit that indicates the available retarder torque which ca...
Percent Torque At Maximum	00	Engine	-9,216,334,058,6...	No Units	The torque limit that indicates the available retarder torque which ca...
Percent Torque At Peak	00	Retarder - Engine		percent	The torque limit that indicates the available retarder torque which ca...
Percent Torque At Present	00	Retarder - Engine		percent	The torque limit that indicates the available retarder torque which ca...
AC Demand	00	Engine		No Units	AC Demand
AFT Regen Inhibit - Clutch Disengaged	00	Engine		No Units	AFT Regen Inhibit - Clutch Disengaged
AFT Regen Inhibit - Inhibit Switch	00	Engine		No Units	AFT Regen Inhibit - Inhibit Switch
AFT Regen Inhibit - Above Allowed Vehicle Speed	00	Engine		No Units	AFT Regen Inhibit - Above Allowed Vehicle Speed
AFT Regen Inhibit - Accelerator Off Idle	00	Engine		No Units	AFT Regen Inhibit - Accelerator Off Idle
AFT Regen Inhibit - Out of Neutral	00	Engine		No Units	AFT Regen Inhibit - Out of Neutral
AFT Regen Inhibit - PTO Active	00	Engine		No Units	AFT Regen Inhibit - PTO Active
AFT Regen Inhibited - Low Exhaust Gas Temp	00	Engine		No Units	AFT Regen Inhibited - Low Exhaust Gas Temp
AFT Regen Status	00	Engine		No Units	AFT Regen Status
AFT Trap Status	00	Engine		No Units	AFT Trap Status
Accelerator Pedal Position	00	Engine		percent	The ratio of actual position of the analog engine speed/torque request...
Actual Engine - Percent Torque	00	Engine		percent	The calculated output torque of the engine. The data is transmitted i...
Actual Maximum Available Engine Torque	00	Engine		percent	This is the maximum amount of torque that the engine can immediately d...
Actual Maximum Available Retarder Torque	00	Retarder - Engine		percent	This is the maximum amount of torque that the retarder can immediately d...
Actual Retarder - Percent Torque	00	Retarder - Engine		percent	Actual braking torque of the retarder as a percent of retarder configu...
Aftertreatment #1 Fuel Pressure	00	Engine		percent	Position that the controller is commanding the aftertreatment #1 fuel ...
Aftertreatment #1 Fuel Rate	00	Engine		No Units	Rate of fuel being delivered to aftertreatment #1 for regeneration
Amber Warning Lamp	00	Engine		No Units	
Catalyst Tank Level	00	Engine		percent	A special catalyst uses chemical substance to reach legal requirement ...
Cold Start Relay	00	Engine		No Units	Cold Start Relay
Cold Start Solenoid	00	Engine		No Units	Cold Start Solenoid
Crank Inhibit Status	00	Engine		No Units	Crank Inhibit Status
Cruise Control Set Speed	00	Engine		cmph	Value of set (chosen) velocity of velocity control system.
Driver's Demand Engine - Percent Torque	00	Engine		percent	The requested torque output of the engine by the driver. It is based o...
Drivers Demand Retarder - Percent Torque	00	Retarder - Engine		percent	The Drivers demand retarder - percent torque is the maximum torque sel...
Engine Auxiliary Coolant Pressure	00	Engine		cmpr	Gage pressure of coolant found in the intercooler which is located aft...
Engine Default Torque Limit	00	Engine		No Units	Companion parameter to Transmission Torque Limit (SPN 1845). This "ec...
Engine Demand - Percent Torque	00	Engine		percent	The requested torque output of the engine by all dynamic internal inpu...
Engine Fuel Actuator 1 Control Command	00	Engine		percent	The control command to fuel actuator 1, normalized to percent, where 0...
Engine Fuel Rate	00	Engine		No Units	Amount of fuel consumed by engine per unit of time.
Engine Inlet Air Mass Flow Rate	00	Engine		No Units	Mass flow rate of fresh air entering the engine air intake, before any...
Engine Percent Load At Current Speed	00	Engine		percent	The ratio of actual engine percent torque (indicated) to maximum indic...

Source	Module	Time	Messages Per Sec...
0	Engine	08:50:31:765	341.617
15	Retarder - Engine	08:50:28:515	10.915

- Name** - Name of the signal being broadcast
- Source** - Source address of the module that is broadcasting the signal. For source address information [CLICK HERE](#) for iKnow IK0800351
- Module** - Name of module that is broadcasting the signal.
- Value** - This is what is being broadcast
- Units** - Measure of the value
- Description** - Gives brief explanation of the signal

6. MAKING A CAPTURE

Using the buttons on the **Log** tab you can create a recording of your data for review. As soon as you establish a communication link the tool will begin recording your session. Clicking the **Clear Log** button will restart the recording. The recording will continue until you click the [CLICK HERE](#) for iKnow IK 2700005 oh how to zip/compress a file. Once the file has been zipped you can attach to case file for review.



USEFUL LINKS

- [Helios Download](#)
- [1939 Source Address iKnow IK0800351](#)
- [How to Zip/Compress a file iKnow IK2700005](#)

Hide Details

Feedback Information

Viewed: 575

Helpful: 6

Not Helpful: 1

No Feedback Found