



**Countries:** BRAZIL, CANADA, UNITED STATES, MEXICO  
**Availability:** ISIS, Bus ISIS, FleetISIS  
**Major System:** ENGINES  
**Current Language:** English  
**Other Languages:** [Français](#), [Español](#),  
**Viewed:** 10287  
**Document ID:** IK1200481  
**Revision:** 3  
**Created:** 4/2/2010  
**Last Modified:** 3/18/2013  
**Author:** David Kistner

[Less Info](#)

Hide Details

Coding Information

<b>Copy Link</b> 	<b>Copy Relative Link</b> 	<b>Bookmark</b>  <a href="#">View My Bookmarks</a>	<b>Add to Favorites</b> 	<b>Print</b> 	<b>Provide Feedback</b> 	<b>Helpful</b>  2392	<b>Not Helpful</b>  1779
----------------------	-------------------------------	--	-----------------------------	------------------	-----------------------------	----------------------------	--------------------------------

**Title: Aftertreatment Soot Level Reset After AFI, DPF or DOC Cleaning or Replacement**

**Applies To: 2008 - 2009 MaxxForce® 11 and 13 Engines 2010-2012 MaxxForce® 11 and 13 Engines**

**DESCRIPTION**

The soot level accumulator must be reset in the After Treatment Control Module (ACM) when one of the following aftertreatment components have been cleaned or replaced:

- Diesel Particulate Filter (DPF) new or has been cleaned.
- Diesel Oxidation Catalyst (DOC) new or has been cleaned
- 2008 - 2009 MaxxForce 11 and 13 Engines Only - AFI cleaned or replaced

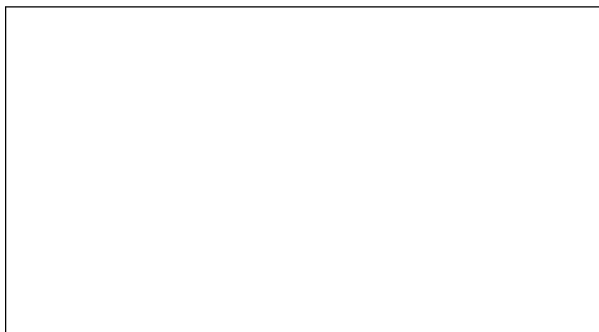
**2008 - 2009 MaxxForce 11 and 13 SERVICE PROCEDURE**

After the DOC and or the DPF been cleaned or replaced follow the process below to reset the soot level:

1. Connect ServiceMaxx® to the vehicle.
2. Top Menu Go to Sessions. Figure 1
3. Select Aftertreatment. Figure 1
4. Select HistoryTab Figure 2 -1
5. Select Parameter - Aftertreatment Reset Request Figure 2 -2
6. Use Chart 1 to make the proper reset choice based on component and action
7. Select the choice from the drop down in the value field next to the parameter name Figure 2- 3
8. Select Program Engine after the selected reset choice has been made. Figure 2-4

Chart 1

Component	Action	ServiceMaxx® Choice
Diesel Particulate Filter (DPF)	Cleaned	DPF Cleaned
After Treatment Fuel Injector (AFI)	Cleaned or Replaced	New or Cleaned AFT Fuel Injector
Diesel Particulate Filter (DPF)	New Replaced	New DPF Installed
Diesel Oxidation Catalyst (DOC)	New Replaced or Cleaned	New or Cleaned DOC



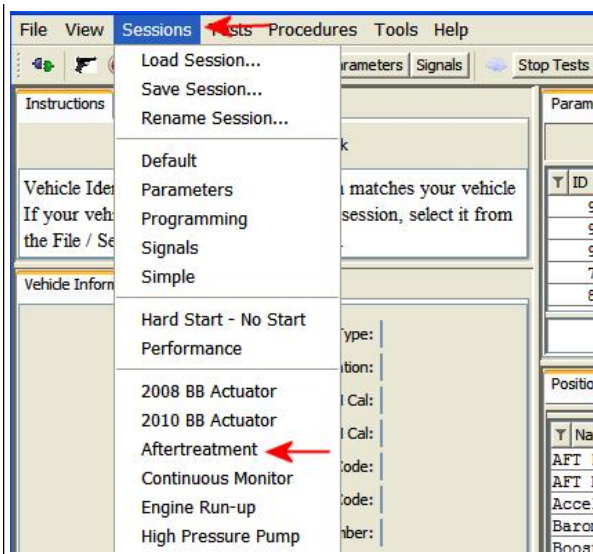


Figure 1 - Sessions - Aftertreatment

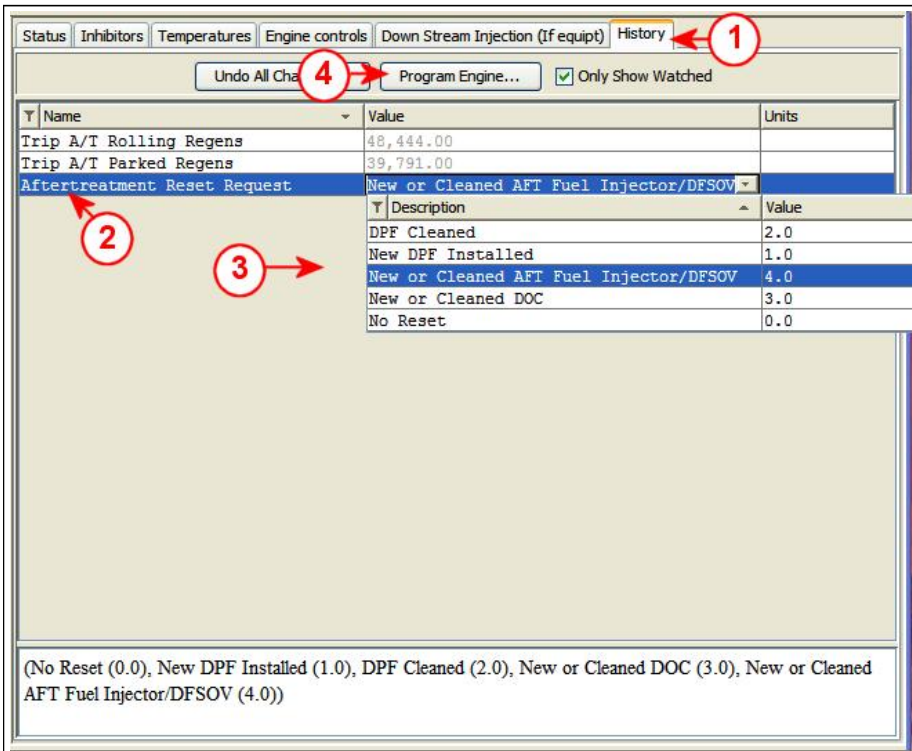


Figure 2 - Aftertreatment Session

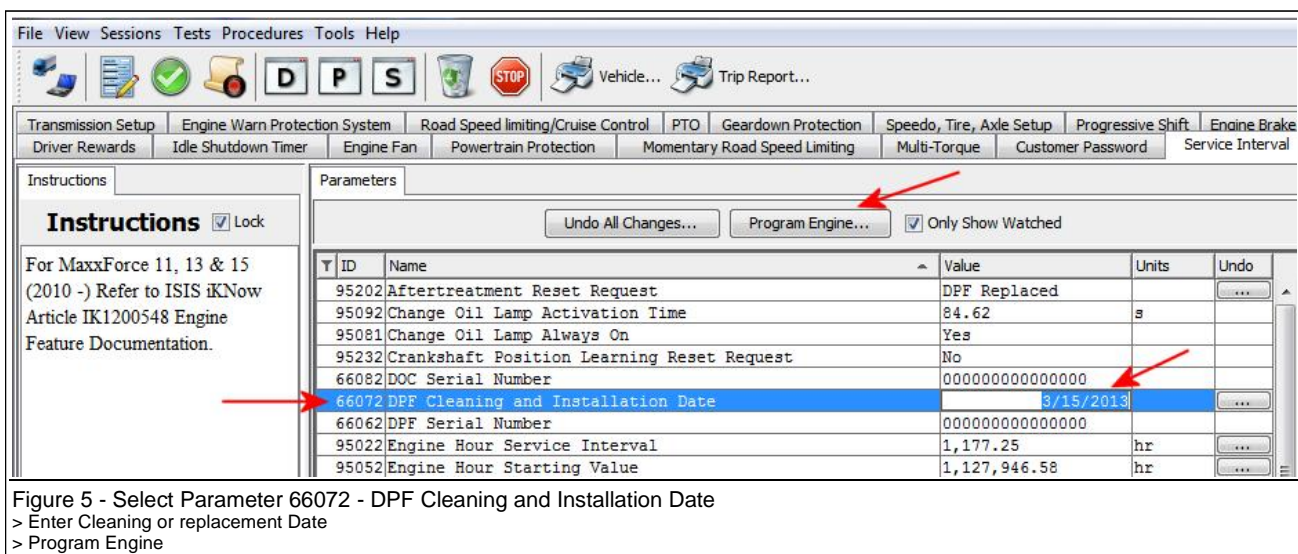
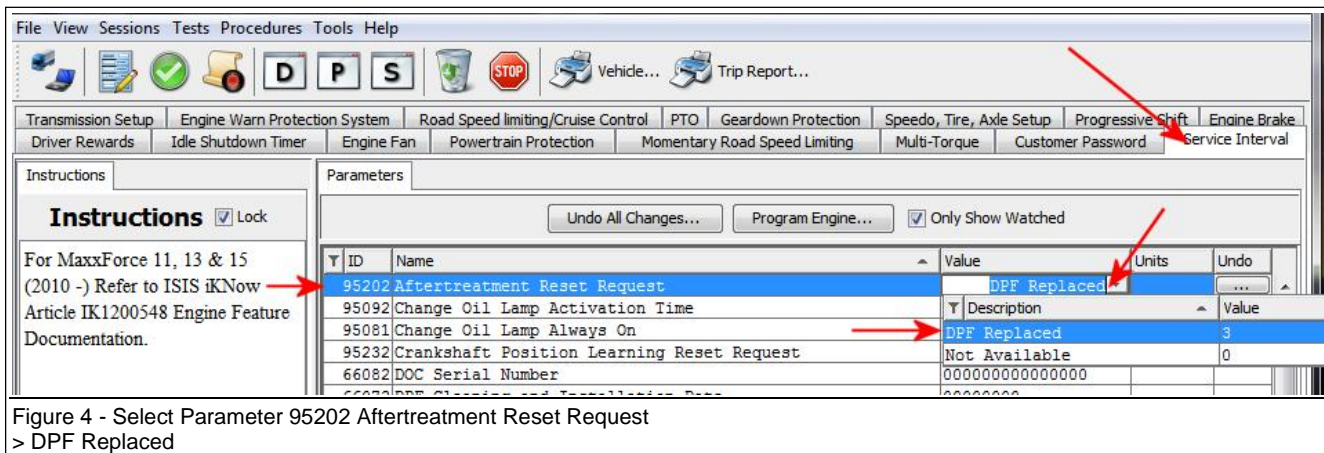
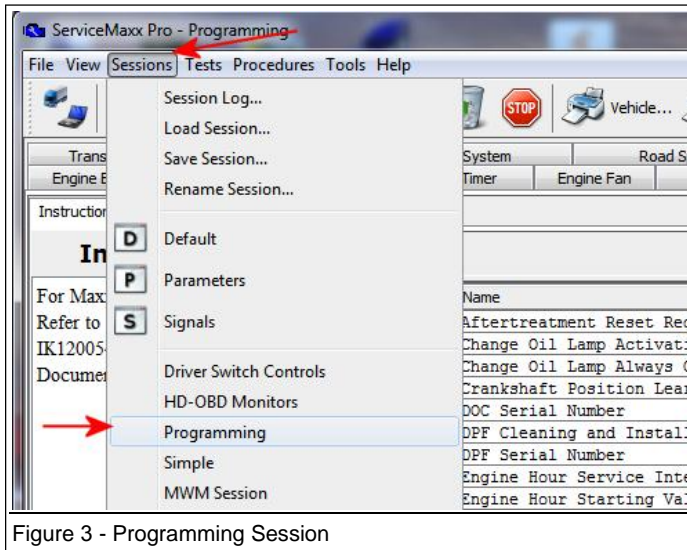
- 1 - History Tab
- 2 - Aftertreatment Reset Request
- 3 - Select Reset Action
- 4 - Select Program Engine

### 2010 - 2012 MaxxForce 11 and 13 SERVICE PROCEDURE

After the DOC and or the DPF been cleaned or replaced follow the process below to reset the soot level:

1. Connect ServiceMaxx® to the vehicle.
2. Top Menu go to Sessions. -Figure 3
3. Select Programming. -Figure 3
4. Select Service Interval Tab -Figure 4
5. Select Parameter 95202 - Aftertreatment Reset Request - Figure 4

6. Select **DPF Replaced** Select the choice from the drop down in the value field next to the parameter name Figure 4
7. Select Parameter 66072 -DPF cleaning and installation date - Figure 5
8. Enter Replacement or Cleaning Date in the parameter field. - Format MM/DD/YYYY - Figure 5
9. Select **Program Engine** after the changes . Figure 5



**OTHER RESOURCES**

- [IK1200425 Maxxforce 11 & 13 AFI Diagnostics and Cleaning](#)
- [IK1200423 Updated Designed AFI Fuel and Coolant Lines on MaxxForce® 11 and 13 Engines](#)

 Hide Details

Feedback Information

Viewed: 10286  
Helpful: 2392  
Not Helpful: 1779

No Feedback Found

Copyright © 2013 Navistar, Inc.