



Countries: AUSTRALIA, BRAZIL, CANADA, UNITED STATES, MEXICO, SOUTH AFRICA
Document ID: IK1200633
Availability: ISIS, Bus ISIS, FleetISIS
Revision: 2
Major System: ENGINES
Created: 8/1/2011
Current Language: English
Last Modified: 8/30/2013
Other Languages: [Français](#), [Español](#),
Author: Mario Tafoya
Viewed: 4379

[Less Info](#)
 Hide Details

Coding Information

Copy Link 	Copy Relative Link 	Bookmark View My Bookmarks	Add to Favorites 	Print 	Provide Feedback 	Helpful 466	Not Helpful 211
---------------	------------------------	---	----------------------	-----------	----------------------	--------------------	------------------------

Title: High Fuel Temperature on 2010 MaxxForce 7

Applies To: 2010 6.5L MaxxForce 7 Engine

DESCRIPTION

The Fuel Cooler Valve (FCV) is mounted to the radiator support bracket on the driver side of the cooling package. The FCV is used to redirect coolant through the fuel cooler. The ECM uses the Engine Fuel Temperature (EFT) sensor to monitor fuel temperature and control the FCV to maintain the desired temperature. The ECM controls this valve to warm and cool the fuel as required by weather and operating conditions. The FCV is normally open allowing coolant to pass through the cooler.

SYMPTOMS

Engine lamp will come on when DTC's are set. Engine will start to lose power or derate due to the Engine Warning Protection System (EWPS).

POSSIBLE DIAGNOSTIC TROUBLE CODES

DTC	SPN	FMI	MODULE	DESCRIPTION
	174	0	ECM	Engine Fuel System above Critical Temperature
	174	15	ECM	Engine Fuel System above Warning Temperature

TROUBLESHOOTING

Verify coolant flow through the secondary radiator. Check hose routing to insure no kinked hoses to and from fuel control valve. Check for restriction or debris on the screen located on the inlet side of valve.

NOTE:

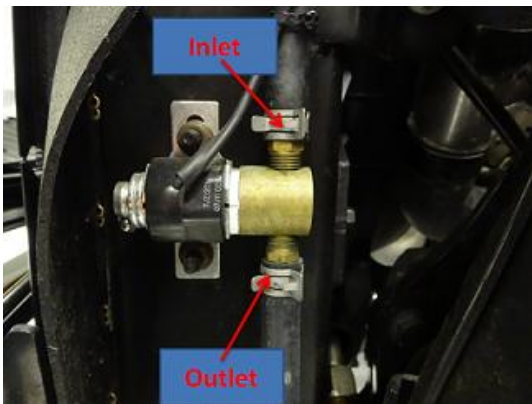
The word : IN (inlet) will be stamped on the FCV above the fitting.

LOCATION:



RESOLUTION

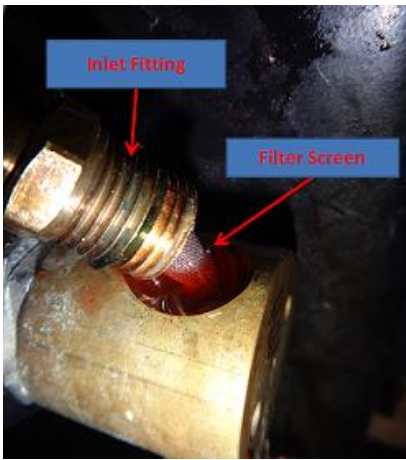
Use two hose pinch pliers and pinch off hoses on both sides of FCV. Remove the inlet hose and use a pick to pull screen out of fitting and discard. Reassemble, Clear DTC's road test if no more concerns no other action is required.



1. Use 2 hose pinch pliers and pinch off the inlet and outlet to the FCV.



2. Remove the Inlet Fitting hose.



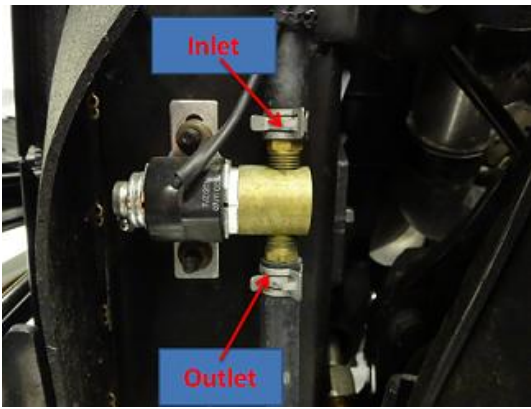
3. Remove the Inlet Fitting from the FCV.



4. Remove the filter screen from the Inlet Fitting.



5. Re-install Inlet Fitting onto the FCV.



6. Re-install Inlet fitting hose.
7. Remove the 2 pinch hose pliers from the Inlet and Outlet FCV hoses.
8. **Clear DTC's and road test if no more concerns and no other action is required.**

Hide Details

Feedback Information

Viewed: 4378
 Helpful: 466
 Not Helpful: 211

Staff ID	Client ID	Comments	Created Date
U00JFG2		You received the following feedback From: U00JFG2 - John Gislason Email Address: SMTP: (John.Gislason@Navistar.com)John.Gislason@Navistar.com Feedback: On TerraStar models only - ensure the hot coolant from the engine enters the top port of the heat exchanger mounted to the front of the cooling package. Failure to route as described will prevent efficient fuel cooler operation.	8/30/2013 3:09:13 PM

Copyright © 2013 Navistar, Inc.