



**Countries:** CANADA, UNITED STATES, MEXICO  
**Availability:** ISIS  
**Major System:** ENGINES  
**Current Language:** English  
**Other Languages:** [Français](#), [Español](#),  
**Viewed:** 3430  
**Document ID:** IK1200476  
**Revision:** 3  
**Created:** 3/22/2010  
**Last Modified:** 8/1/2013  
**Author:**

[Less Info](#)

Hide Details

Coding Information

Copy Link	Copy Relative Link	Bookmark	Add to Favorites	Print	Provide Feedback	Helpful	Not Helpful
		 <a href="#">View My Bookmarks</a>				 556	 617

**Title: MaxxForce® 11 and 13 Experiencing Low Power After Programming the ECM.**

**Applies To: MaxxForce® 11 and 13**

**DESCRIPTION**

MaxxForce® 11 and 13 Experiencing Low Power After Programming the ECM

**SYMPTOMS**

- Low power or surge in high gear after programming

**TROUBLESHOOTING**

- 1) Connect to the truck with ServiceMaxx and verify the EDC Engine Family Rating Code matches the third digit in the Engine Family Rating Code (EFRC). Figure 1 for example:

Engine Family Rating Code (EFRC)    **1121**  
 EDC Engine Family Rating Code        **2**



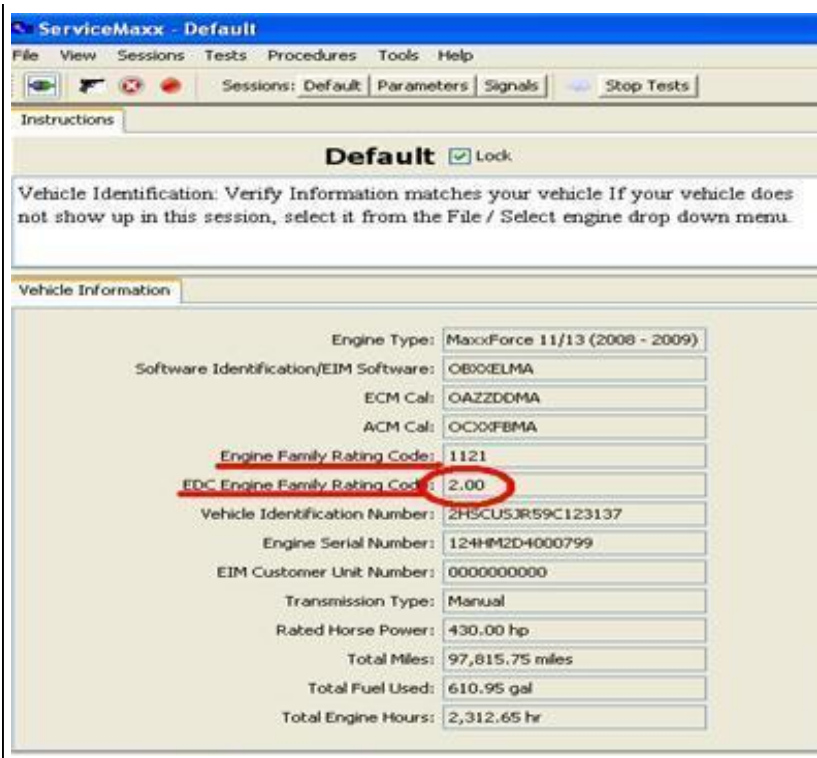
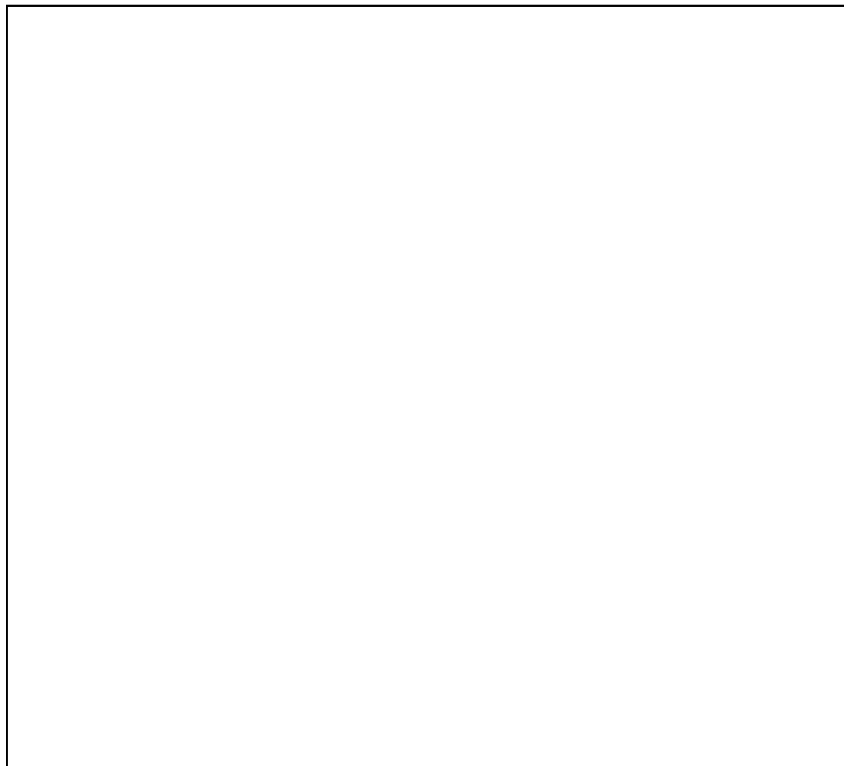


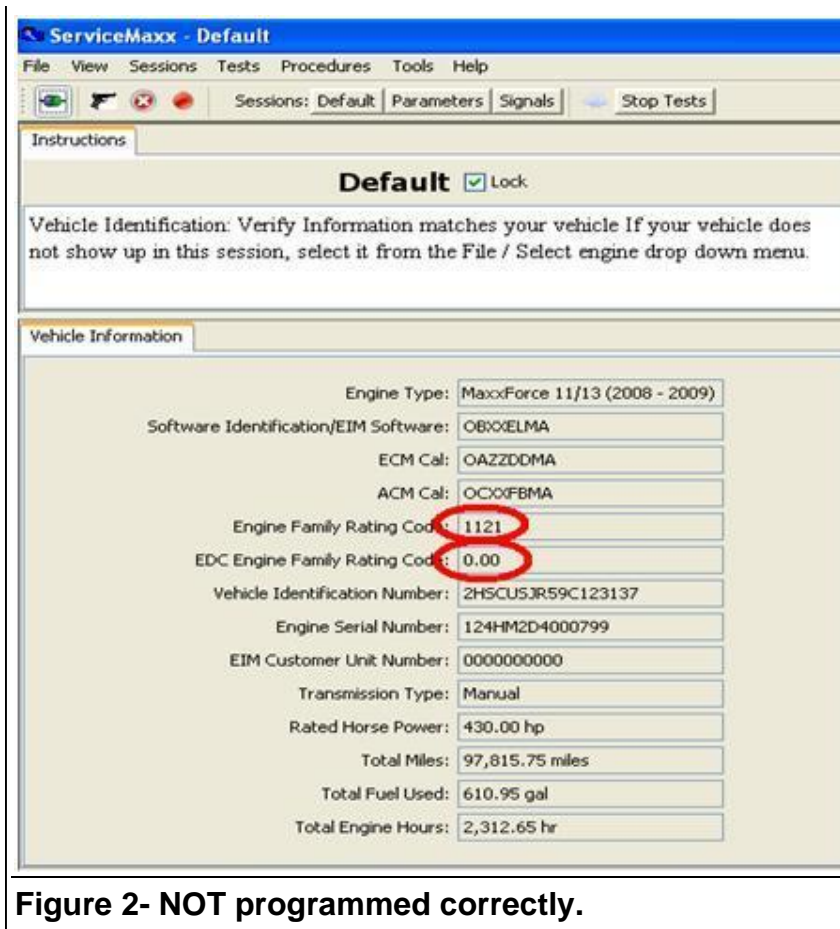
Figure 1 - Programmed correctly

2) See the example below in Figure 2 for a ECM that **Did Not Program Correctly:**

Engine Family Rating Code (EFRC) 1121

EDC Engine Family Rating Code 0





**Note:** There are multiple EFRC configurations, but the third digit must always match the EDC EFRC.

**RESOLUTION**

After updating the ECM check the EDC and EFRC numbers to see if they match as stated previously.

If they do not match, program the EIM and ECM as a blank module and recheck. If they continue not to match open a case file with Tech Central and reference this IKNOW document.

Hide Details Feedback Information

	Viewed: 3429
	Helpful: 556
	Not Helpful: 617

No Feedback Found