



SI B63 10 09
Lights

March 2013
Technical Service

This Service Information bulletin supersedes SI B63 10 09 **dated March 2011.**

NEW designates changes to this revision

SUBJECT

Brake Light Bulb Failure

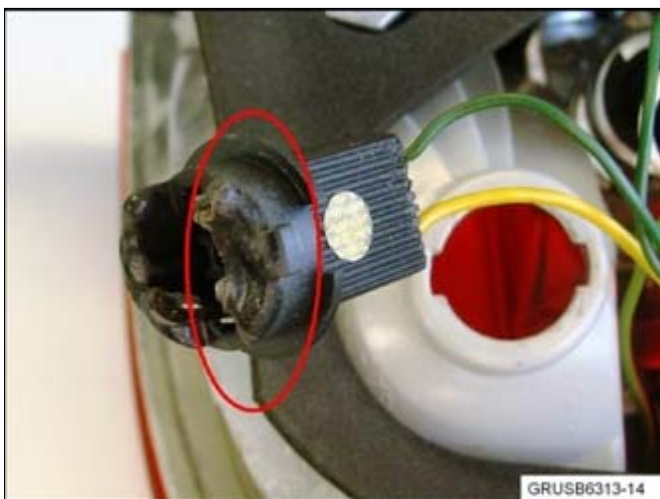
MODEL

NEW E70 produced from October 01, 2006 to April 1, 2011

NEW E71 produced from April 1, 2008 to April 1, 2011

NEW E72 produced from January 1, 2010 to April 1, 2011

NEW SITUATION



A Check Control message is displayed for brake light bulb failure. In some cases, inspection of the brake light bulb holder shows the molding for the bulb holder is deformed.

NEW CAUSE

- Composition of the bulb holder material and high bulb temperatures
- Premature bulb failure
- Coding error in FRM (Footwell Module)
- Non-approved accessories or non-original parts (for example, aftermarket trail hitch or light bulbs)

NEW PROCEDURE

Perform the repair as outlined below, based on the model and production date.

A. E70 produced from October 01, 2006 to September 30, 2009

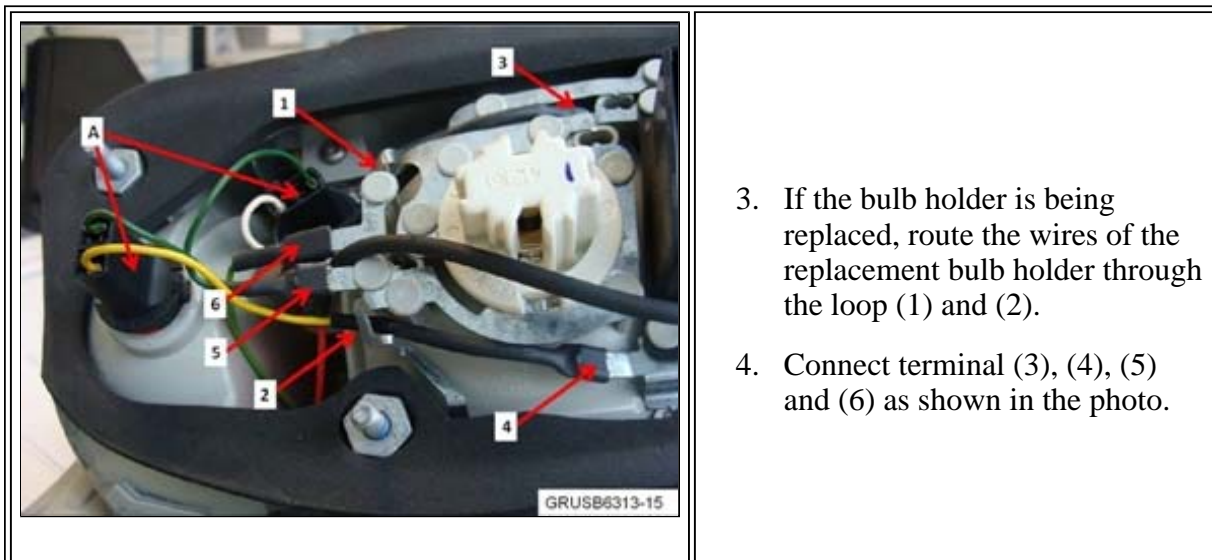
1. It is important to check the I-level in the vehicle before repair. The correction for the coding error in the FRM was introduced in ISTA/P 2/35.2 or higher, I-level E070-09-09-515. The new coding will reduce the operating voltage at the bulb. Any vehicle with a lower I-level must be programmed and coded with ISTA/P.

Note: ISTA/P will automatically reprogram and code all programmable control modules that do not have the latest software.

For information on programming and coding with ISTA/P, refer to CenterNet / Aftersales Portal / Service / Workshop Technology / Vehicle Programming.

2. Inspect the light bulb holder. If the bulb holder is black and damaged, it must be replaced with a new bulb holder (gray color with harness included). Replace the failed bulb with a long-life bulb 12V/16W (1 pair per side).

Note: If the lamp body is deformed and the installation of the bulb holder or the new socket is affected, replace the complete lamp assembly instead of the bulb holder.



3. If the bulb holder is being replaced, route the wires of the replacement bulb holder through the loop (1) and (2).
4. Connect terminal (3), (4), (5) and (6) as shown in the photo.

B. E70 produced from October 1, 2009 to April 01, 2011

E71 produced from April 01, 2008 to April 01, 2011

E72 produced from January 01, 2010 to April 01, 2011

The root cause is premature bulb failure. Replace the failed brake light bulb with a long-life bulb 12V/16W (1 pair per side) mounted on the gray bulb holder and/or the brake light bulb with a long-life bulb 12V/21W (1 per side).

NEW PARTS INFORMATION

Part Number	(Procedure) Description	Quantity
Refer to EPC	Rear lamp (L)	1*

Refer to EPC	Rear lamp (R)	1*
OR		
Refer to EPC	Bulb holders (2 bulb holders and wiring)	1/ side
Refer to EPC	Long-life bulb 12V16W	2/side
And / or		
Refer to EPC	Long-life bulb 12V21W	1/side

* Only if necessary; the bulb holder and bulb are not replaced.

WARRANTY INFORMATION

Note: Failures that result from the installation of non-approved accessories and/or non-original parts are not covered.

Procedure A with Reprogramming and Encoding the Vehicle

Covered under the terms of the BMW New Vehicle/SAV Limited Warranty or the BMW Certified Pre-Owned Program.

Defect Code:	61 38 06 02 00	
Labor Operation:	Labor Allowance:	Description:
00 00 006	Refer to KSD2	Performing “vehicle test” (with vehicle diagnosis system – checking faults)
and if necessary, also		
61 21 528	Refer to KSD2	Charging battery
and		
61 00 710	Refer to KSD2	Programming / encoding control unit(s) (not including CAS)
or		
61 00 720	Refer to KSD2	Programming / encoding control unit(s) (with CAS)

Labor operation code 00 00 006 is a Main labor operation. If you are using a Main labor code for another repair, use the Plus code labor operation 00 00 556 instead.

If a control module fails to program correctly or initializations are required, the additional work must be claimed with separate labor operations under the applicable defect code listed above; refer to KSD2.

And, if necessary, also:

--	--	--

Labor Operation:	Labor Allowance:	Description:
63 21 550	Refer to KSD2	Replacing one bulb holder housing for left or right tail light (including replacing the bulb, if necessary)
or		
63 21 555	Refer to KSD2	Replacing socket housings for left and right rear lights (including replacing the bulbs, if necessary)
or if necessary, also		
Labor Operation:	Labor Allowance:	Description:
63 99 790	Refer to KSD2	Replacing light bulb(s) for left or right tail light
or		
63 99 791	Refer to KSD2	Replacing light bulbs for left and right rear tail lights

Procedure A without Reprogramming and Encoding the Vehicle (Vehicle is already at the Correct I-Level)

Covered under the terms of the BMW New Vehicle/SAV Limited Warranty.

Defect Code:	63 21 02 79 00	
Labor Operation:	Labor Allowance:	Description:
63 21 055	Refer to KSD2	Replacing one bulb holder housing for left or right tail light (including replacing the bulb if necessary)

Labor operation code 63 21 055 is a Main labor operation. If you are using a Main labor code for another repair, use the Plus code labor operation 63 21 550 instead.

or

Labor Operation:	Labor Allowance:	Description:
63 21 056	Refer to KSD2	Replacing socket housings for left and right rear lights (including replacing the bulbs if necessary)

Labor operation code 63 21 056 is a Main labor operation. If you are using a Main labor code for another repair, use the Plus code labor operation 63 21 556 instead.

or

Defect Code:	63 21 06 12 00	
Labor Operation:	Labor Allowance:	Description:
63 99 315	Refer to KSD2	Replacing light bulb(s) for left or right tail light

Labor operation code 63 99 315 is a Main labor operation. If you are using a Main labor code for another repair, use the Plus code labor operation 63 99 790 instead.

or

Labor Operation:	Labor Allowance:	Description:
63 99 318	Refer to KSD2	Replacing light bulbs for left and right rear tail lights

Labor operation code 63 99 318 is a Main labor operation. If you are using a Main labor code for another repair, use the Plus code labor operation 63 99 791 instead.

or

Procedure B

Covered under the terms of the BMW New Vehicle/SAV Limited Warranty.

Defect Code:	63 21 06 12 00	
Labor Operation:	Labor Allowance:	Description:
63 99 315	Refer to KSD2	Replacing light bulb(s) for left or right tail light

Labor operation code 63 99 315 is a Main labor operation. If you are using a Main labor code for another repair, use the Plus code labor operation 63 99 790 instead.

or

Labor Operation:	Labor Allowance:	Description:

63 99 318

Refer to KSD2

Replacing light bulbs for left and right
rear tail lights

Labor operation code 63 99 318 is a Main labor operation. If you are using a Main labor code for another repair, use the Plus code labor operation 63 99 791 instead.

Refer to KSD2 for the corresponding flat rate unit (FRU) allowance. Enter the Chassis Number, which consists of the last 7 digits of the Vehicle Identification Number (VIN). Click on the "Search" button, and then enter the applicable flat rate labor operation in the FR code field.

[Copyright ©2013 BMW of North America, Inc.]