



Countries: UNITED STATES **Document ID:** IK1200872
Availability: ISIS **Revision:** 0
Major System: ENGINES **Created:** 1/15/2013
Current Language: English **Last Modified:** 1/25/2013
Other Languages: NONE **Author:** Collins Bonnema
Viewed: 195

[Less Info](#)

Hide Details

Coding Information

Copy Link 	Copy Relative Link 	Bookmark View My Bookmarks	Add to Favorites 	Print 	Provide Feedback 	Helpful 0	Not Helpful 0
----------------------	-------------------------------	--	-----------------------------	------------------	-----------------------------	-------------------------	-----------------------------

Title: Containment/Return of Suspect Synthetic Oil Filter Includes Filter Inspection Procedure Supplements G-19-9306A

Applies To: 2010 MaxxFORCE 13L Engines

DESCRIPTION

This article is a supplement to :
 Containment/Return of Suspect Synthetic Oil Filter [G-19-9306A](#)

Synthetic Oil Filter Element Inspection for 2010 MaxxFORCE 13L Engines. This Inspection is for dealer inventory only. For filters currently in vehicles, please continue to use as normal.

Oil Filter Kit Number: 3007498C93
 Oil Filter Part Number: 3015784C1

Note: Certified good parts will have a dot (shown below) on the Oil Filter Kit's label and will not need this inspection.



PURPOSE

The purpose of this inspection is to identify Synthetic Oil Filter Elements with loose laces (fibers).

INSPECTION

Step 1:

Open the box containing the oil filter element.



Step 2:

Remove the oil filter element from the box.

Note: DO NOT REMOVE FILTER ELEMENT FROM BAG WHILE DOING THIS INSPECTION.



Step 3:

Check all windings laces on the filter. Check with the thumb in the direction of the yellow arrow. Apply a mild force of about 5N.

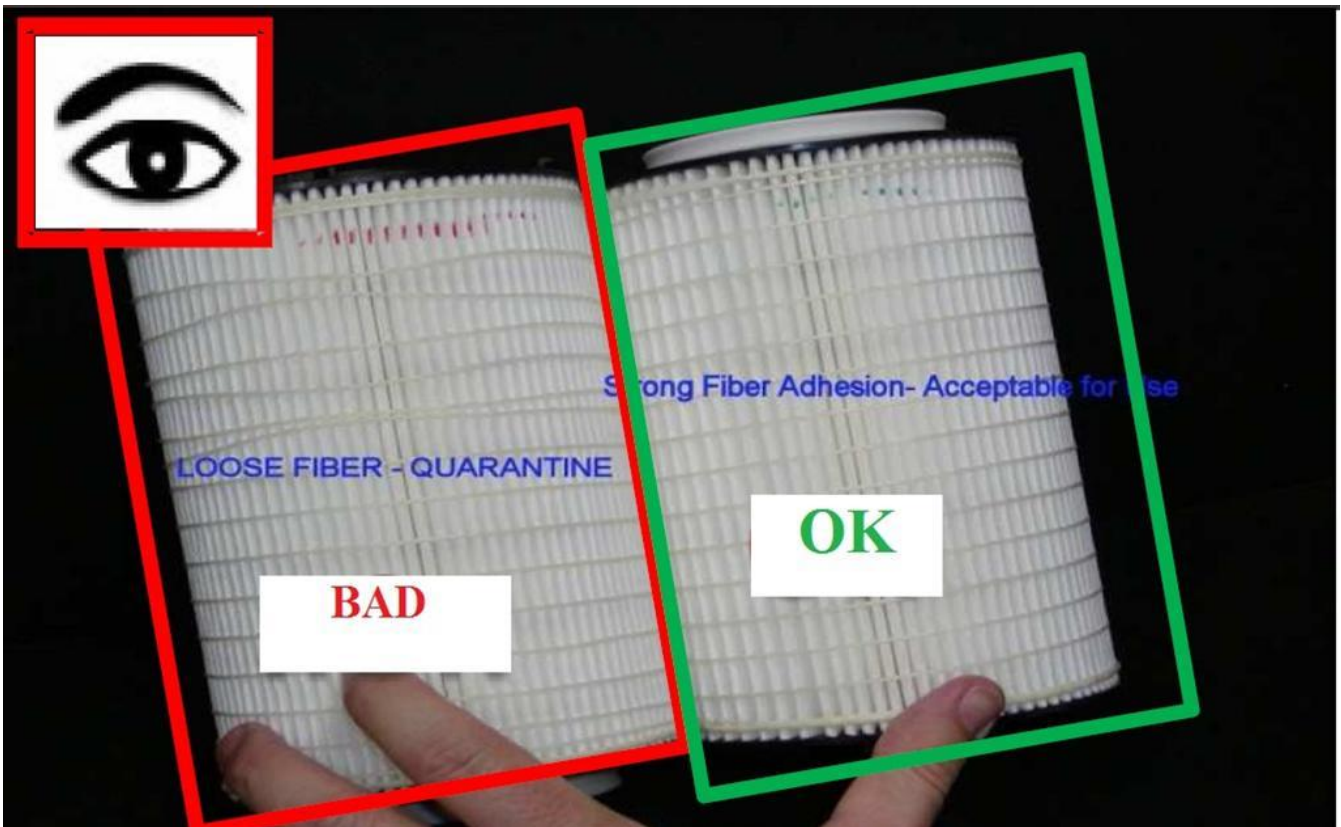


Ensure to check all winding laces using thumb around the perimeter of the filter (the filter rotation in the direction of the green arrow.)



Step 4:

Now inspect the winding laces (fibers). If the laces hold firmly to the filter pleats the part is ok. If the laces do not hold firmly to the filter pleats the part is suspect and must be quarantined.



Note: Filter is shown removed from bag for display purposes only. Do not remove the filter from the bag during this inspection.

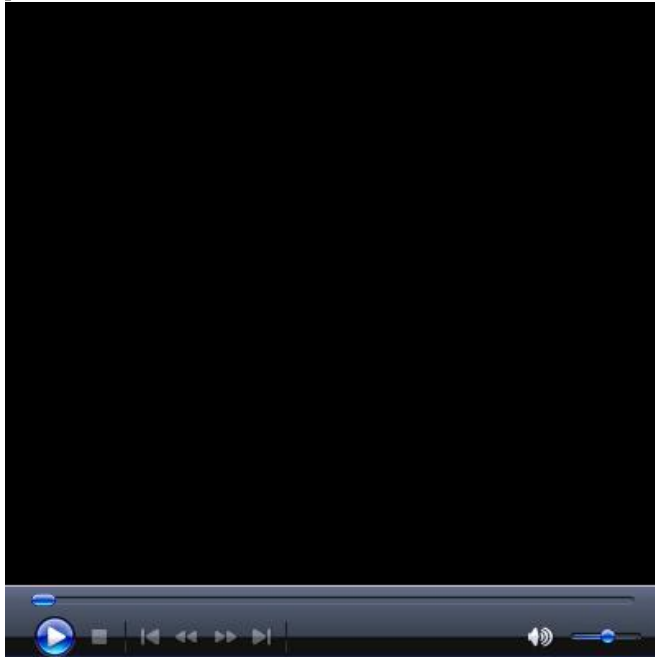
Step: 5

If the filter is found to be good return to dealer inventory.

If the filter is found to be bad quarantine the filter. Label the original packaging as a suspect part. Then house the part in a separate location from good inventory.

Containment/Return of Suspect Synthetic Oil Filter [G-19-9306A](#)

Video of Inspection:



Hide Details

Feedback Information

Viewed: 194
Helpful: 0
Not Helpful: 0

No Feedback Found

Copyright © 2013 Navistar, Inc.