



<b>Countries:</b>	AUSTRALIA, BRAZIL, CANADA, UNITED STATES, MEXICO, SOUTH AFRICA	<b>Document ID:</b>	IK0400093
<b>Availability:</b>	ISIS, Bus ISIS, FleetlSIS, Body Builder	<b>Revision:</b>	3
<b>Major System:</b>	BRAKES	<b>Created:</b>	10/28/2011
<b>Current Language:</b>	English	<b>Last Modified:</b>	11/4/2013
<b>Other Languages:</b>	<a href="#">Français</a> , <a href="#">Español</a> ,	<b>Author:</b>	Anthony Kelso
<b>Viewed:</b>	1441		

[Less Info](#)

Hide Details

Coding Information

<b>Copy Link</b> 	<b>Copy Relative Link</b> 	<b>Bookmark</b>  <a href="#">View My Bookmarks</a>	<b>Add to Favorites</b> 	<b>Print</b> 	<b>Provide Feedback</b> 	<b>Helpful</b>  110	<b>Not Helpful</b>  87
----------------------	-------------------------------	--	-----------------------------	------------------	-----------------------------	---------------------------	------------------------------

**Title:** Bendix Wingman - unable to connect to ACB

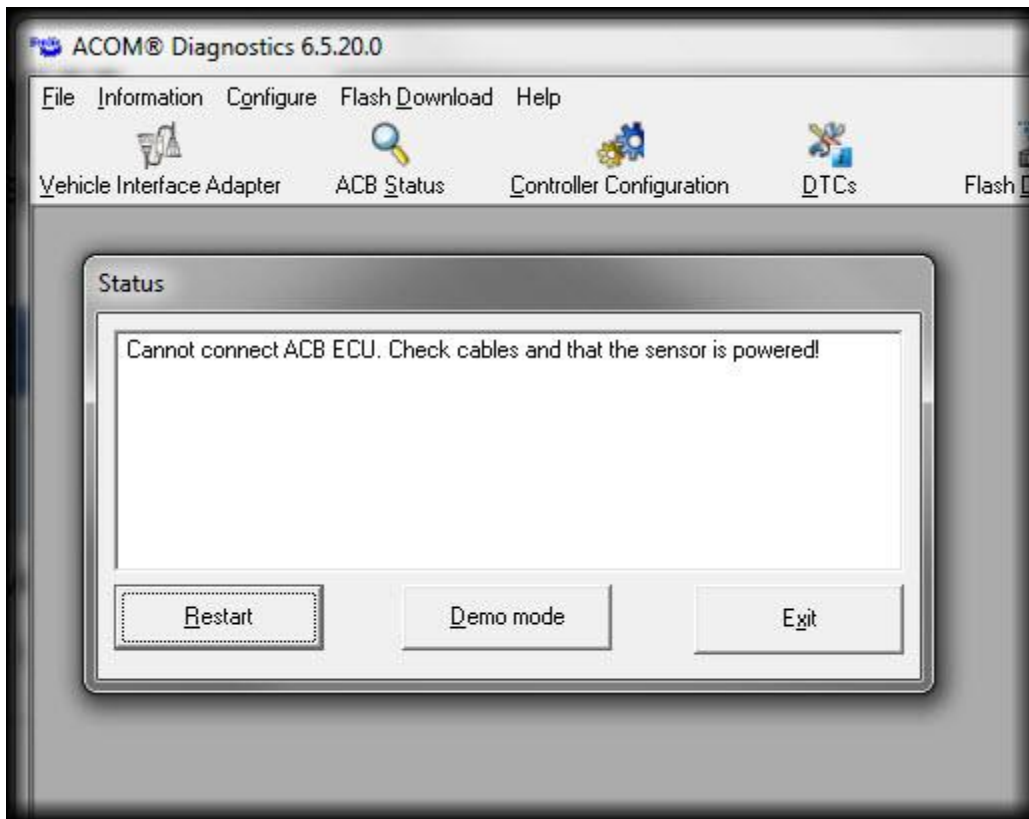
**Applies To:** All

## DESCRIPTION

Unable to connect to Wingman ACB in Acom. No problems connecting to EC-60 side of ABS

## SYMPTOMS

Error box will display "Service Failed! Unable to connect! Check connections!"




## RESOLUTION

Disconnect ECM / TCM fuse to eliminate data traffic. Then attempt to connect to the Wingman ACB Module in ACom.

## ADDITIONAL RESOURCES

[IK0400077- Sensor alignment and ACB instructions](#)

 Hide Details

**Feedback Information**

Viewed:	1440
Helpful:	110
Not Helpful:	87

No Feedback Found

Copyright © 2013 Navistar, Inc.