



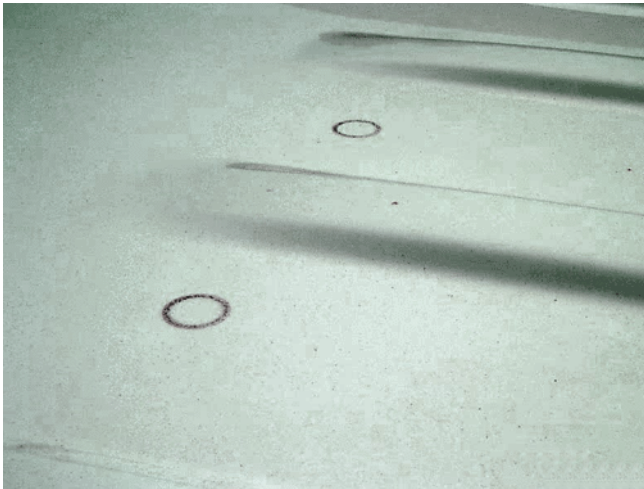
Service Bulletin

PRELIMINARY INFORMATION

Subject: Round Dark Stains on Roof Paint Center Rear Area

Models: 2010-2014 Chevrolet Equinox
2010-2014 GMC Terrain
All without RPO CF5 Sunroof

Condition/Concern



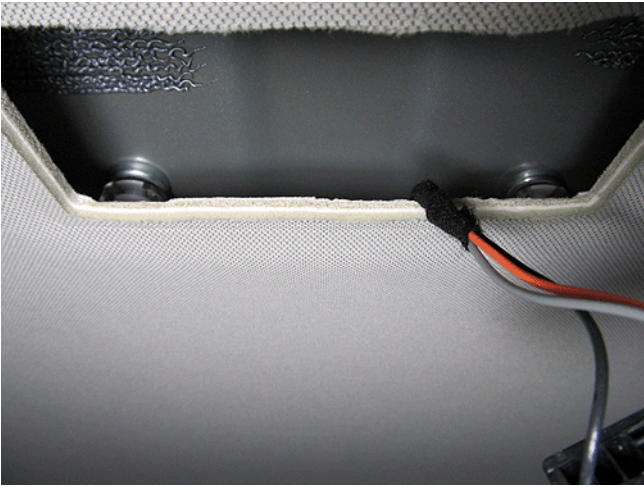
Some customers may comment that two dark circles of paint discoloration have formed in the center of the exterior roof panel. This condition is most noticeable on light colored vehicles.

This condition may be caused by the headliner retention magnets attracting steel or iron dust. This dust, combined with moisture, causes a dark/rust colored stain that does not wash off during routine vehicle washing.

Recommendation/Instructions

Use the following steps to remove the stain and install two metal plates (latch striker spacers) inside of the roof. These metal plates will isolate the magnetic attraction from the exterior of the outer roof panel.

1. Remove the paint discoloration by using the clay bar procedure found in the latest version of Bulletin Number 05-08-51-008.



2. Remove the second row courtesy lamp. Refer to Courtesy Lamp Replacement in SI.



3. Protect the headliner with masking tape and cover the interior to protect from glue contamination.



4. Using a paint pen or marker, mark the location on the inside of the roof panel where the magnets attach.



5. Disengage the magnets and lower the headliner in the courtesy lamp area.
6. Place a foam block or similar material between the roof and headliner to prevent the magnets from reattaching during the repair procedure.
7. Mix an adequate amount of *Super Glue Quick Set Gel Epoxy or the equivalent adhesive. Prepare the adhesive per the manufacturers instructions.



8. Coat the backside of the metal plates with the adhesive and install the plates using the alignment marks created in step #4. Tape the plates into position while the adhesive cures (follow manufacturers information for handling and cure times).
9. Reinstall the rear courtesy lamp. Refer to Courtesy Lamp Replacement in SI.

*We believe this source and their products to be reliable. There may be additional manufacturers of such products/materials. General Motors does not endorse, indicate any preference for or assume any responsibility for the products or material from this firm or for any such items that may be available from other sources.

Parts Information

*This product can be ordered from: www.grainger.com.

**This product can be purchased from Canadian Tire and is readily available at many retail stores.

Part Number	Description	Quantity
12451685	Spacer, Front Side Door Latch Striker	2
15213	*Super Glue Quick Set Gel Epoxy	As Req.
1165246	**Lepage Gel Epoxy	As Req.

Warranty Information

For vehicles repaired under warranty, use:

Labor Operation	Description	Labor Time
1080038*	Clean Roof Paint Stains and Install Metal Plates	0.5 hr
*This is a unique labor operation for bulletin use only. It will not be published in the Labor Time Guide.		

GM bulletins are intended for use by professional technicians, NOT a "do-it-yourselfer". They are written to inform these technicians of conditions that may occur on some vehicles, or to provide information that could assist in the proper service of a vehicle. Properly trained technicians have the equipment, tools, safety instructions, and know-how to do a job properly and safely. If a condition is described, DO NOT assume that the bulletin applies to your vehicle, or that your vehicle will have that condition. See your GM dealer for information on whether your vehicle may benefit from the information.



WE SUPPORT VOLUNTARY TECHNICIAN CERTIFICATION